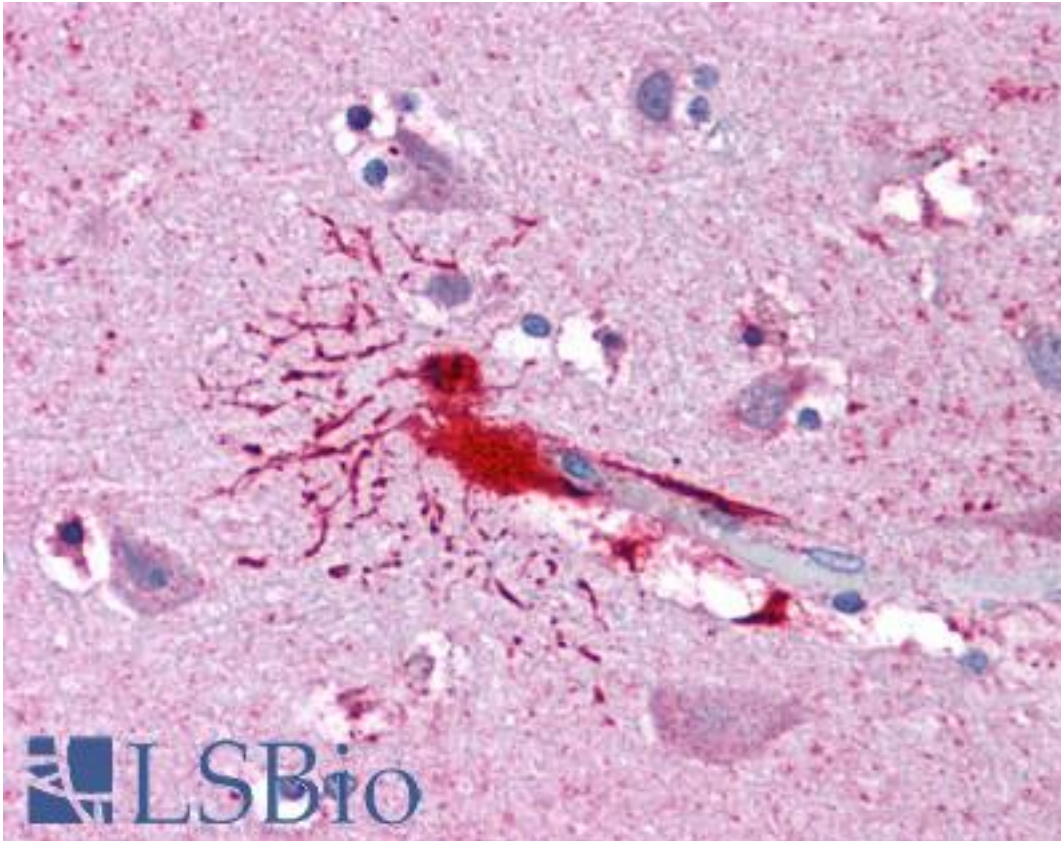


LHX8 Rabbit anti-Human Polyclonal Antibody - LS-B4845 - LSBio

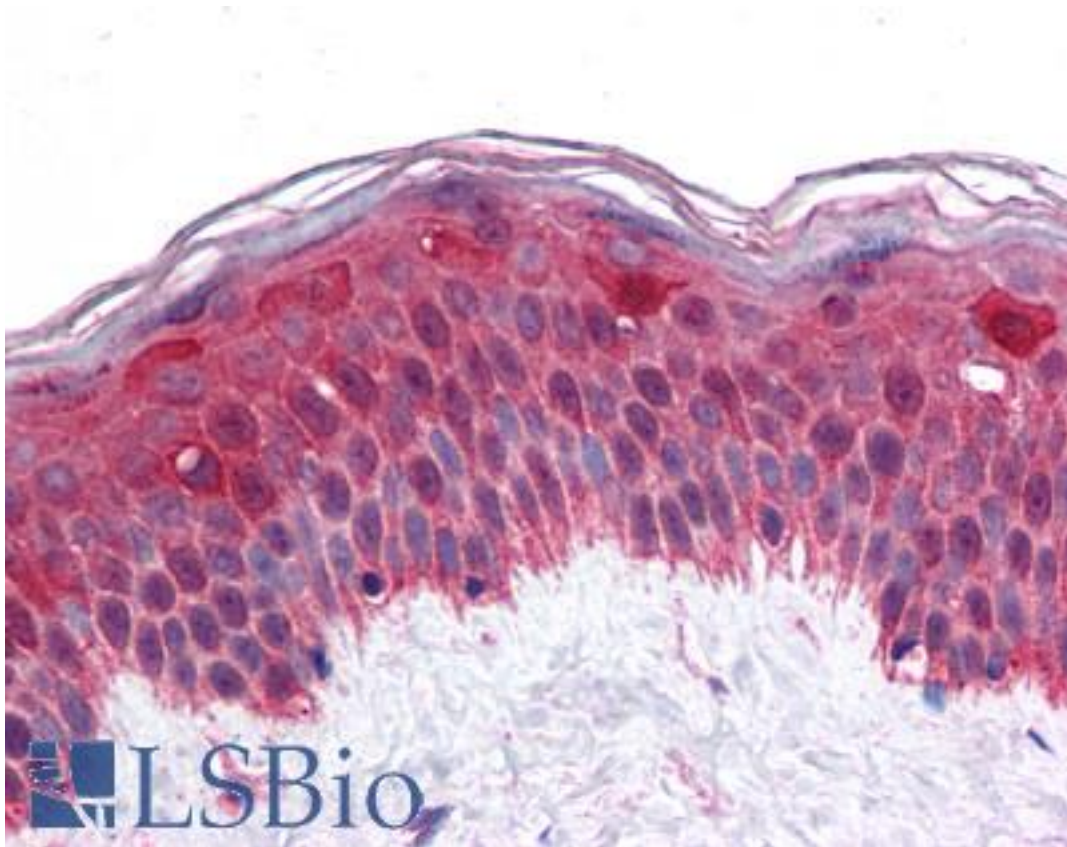
CatalogID:	LS-B4845
Validation:	This antibody replaces catalog number LS-C109423. It has been validated for use in the following assays: IHC-P.
Target:	LIM homeobox 8 (LHX8)
Synonyms:	LHX8 Antibody, LIM homeobox protein 8 Antibody, LIM-homeodomain protein Lhx8 Antibody, LIM/homeobox protein Lhx8 Antibody, LHX7 Antibody, LIM homeobox 8 Antibody
Host	LHX8 antibody was produced in Rabbit
Clonality:	Polyclonal
Immunogen Species:	LHX8 antibody was raised against Human
Immunogen:	LHX8 antibody was raised against recombinant protein fragment containing a sequence corresponding to a region within amino acids 1 and 321 of Human LIM homeobox 8.
Specificity:	Human LIM homeobox 8. Predicted cross-reactivity based on amino acid sequence homology: mouse (96%), rat (97%), pig (98%), zebrafish (82%).
Reactivity:	Human
Purification:	Immunoaffinity purified
Presentation:	0.1 M Tris-glycine, pH 7, 10% Glycerol, 0.01% Thimerosal
Recommended Storage:	Aliquot and store at -20°C. Minimize freezing and thawing.
Uses:	IHC - Paraffin (10 µg/ml), Western blot (1:1000 - 1:10000) (Optimal dilution to be determined by the researcher)
Size:	50 µl
Concentration:	1 mg/ml

Immunohistochemistry Image:



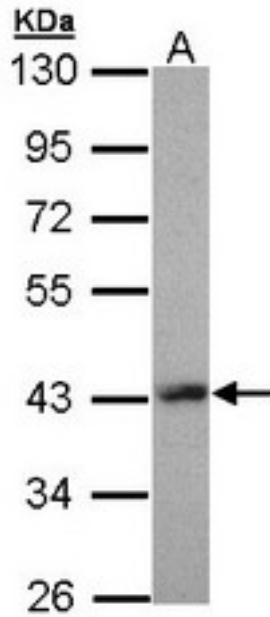
Anti-LHX8 antibody IHC of human brain, cortex. Immunohistochemistry of formalin-fixed, paraffin-embedded tissue after heat-induced antigen retrieval. Antibody LS-B4845 concentration 10 ug/ml.

Immunohistochemistry Image:



Anti-LHX8 antibody IHC of human skin. Immunohistochemistry of formalin-fixed, paraffin-embedded tissue after heat-induced antigen retrieval. Antibody LS-B4845 concentration 10 ug/ml.

Western Blot Image:



Sample (30 ug of whole cell lysate). A: Molt-4. 10% SDS PAGE. LHX8 antibody diluted at 1:5000

Requested From:

Japan

Laboratory Reagent For In Vitro Research Use Only

Not for resale without prior written consent from LifeSpan BioSciences, Inc.

Created on 9/23/2014

© 2014 LifeSpan BioSciences