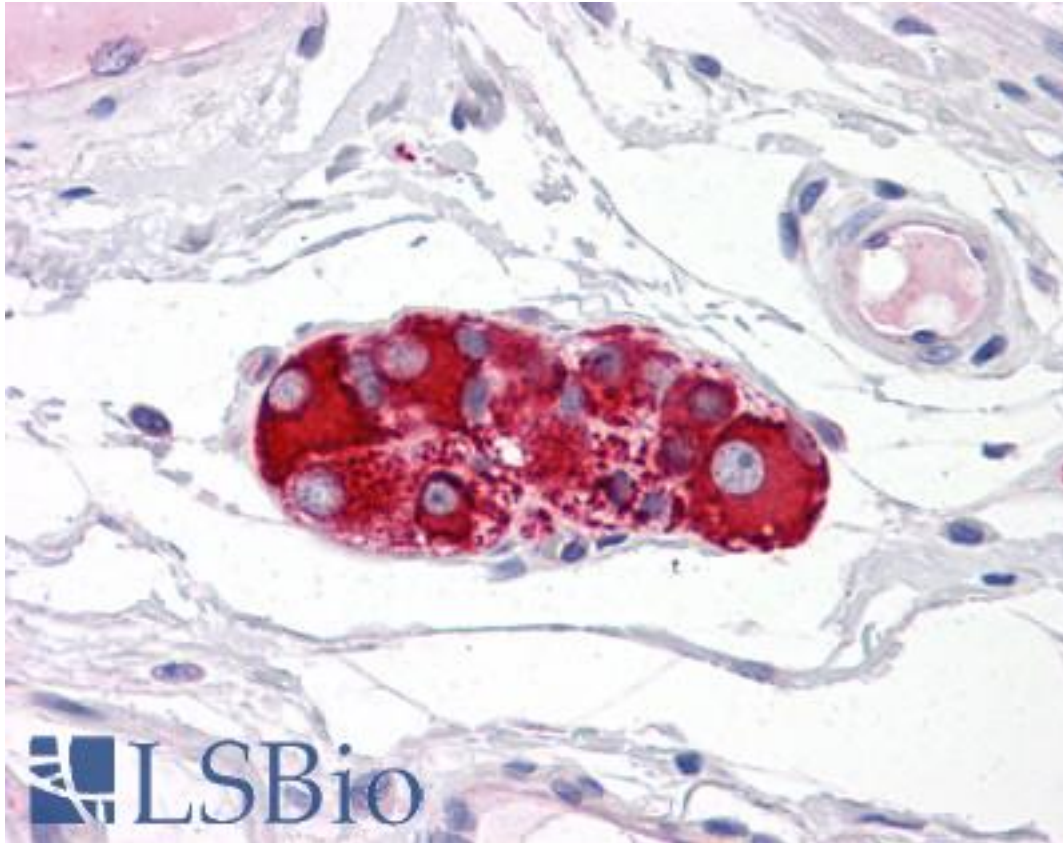


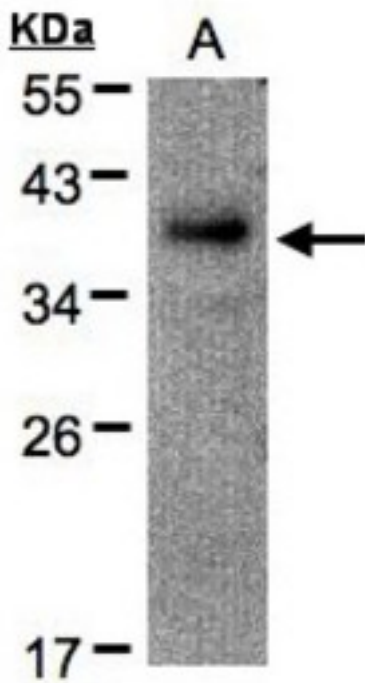
RAD51AP1 Rabbit anti-Human Polyclonal Antibody - LS-B4839 - LSBio	
<b>CatalogID:</b>	LS-B4839
<b>Validation:</b>	This antibody replaces catalog number LS-C109399. It has been validated for use in the following assays: IHC-P.
<b>Target:</b>	RAD51 associated protein 1 (RAD51AP1)
<b>Synonyms:</b>	RAD51AP1 Antibody, PIR51 Antibody, RAD51-associated protein 1 Antibody, RAD51 associated protein 1 Antibody, RAD51-interacting protein Antibody
<b>Host</b>	RAD51AP1 antibody was produced in Rabbit
<b>Clonality:</b>	Polyclonal
<b>Immunogen Species:</b>	RAD51AP1 antibody was raised against Human
<b>Antigen Type:</b>	Synthetic peptide
<b>Immunogen:</b>	RAD51AP1 antibody was raised against synthetic peptide containing a sequence corresponding to a region within amino acids 273 and 335 of Human RAD51AP1.
<b>Specificity:</b>	Human RAD51AP1.
<b>Reactivity:</b>	Human
<b>Purification:</b>	Immunoaffinity purified
<b>Presentation:</b>	PBS, pH 7, 10% Glycerol, 0.01% Thimerosal
<b>Recommended Storage:</b>	Aliquot and store at -20°C. Minimize freezing and thawing.
<b>Uses:</b>	IHC - Paraffin (10 µg/ml), Western blot (1:500 - 1:3000) (Optimal dilution to be determined by the researcher)
<b>Size:</b>	50 µl
<b>Concentration:</b>	1 mg/ml

**Immunohistochemistry Image:**



Anti-RAD51AP1 antibody IHC of human small intestine, submucosal plexus.  
Immunohistochemistry of formalin-fixed, paraffin-embedded tissue after heat-induced antigen retrieval. Antibody LS-B4839 concentration 10 ug/ml.

**Western Blot Image:**



Sample(30 g of whole cell lysate). A: Raji. 12% SDS PAGE. RAD51AP1 antibody diluted at 1:500.

**Requested From:**

Japan

Laboratory Reagent For In Vitro Research Use Only

Not for resale without prior written consent from LifeSpan BioSciences, Inc.

Created on 9/23/2014

© 2014 LifeSpan BioSciences