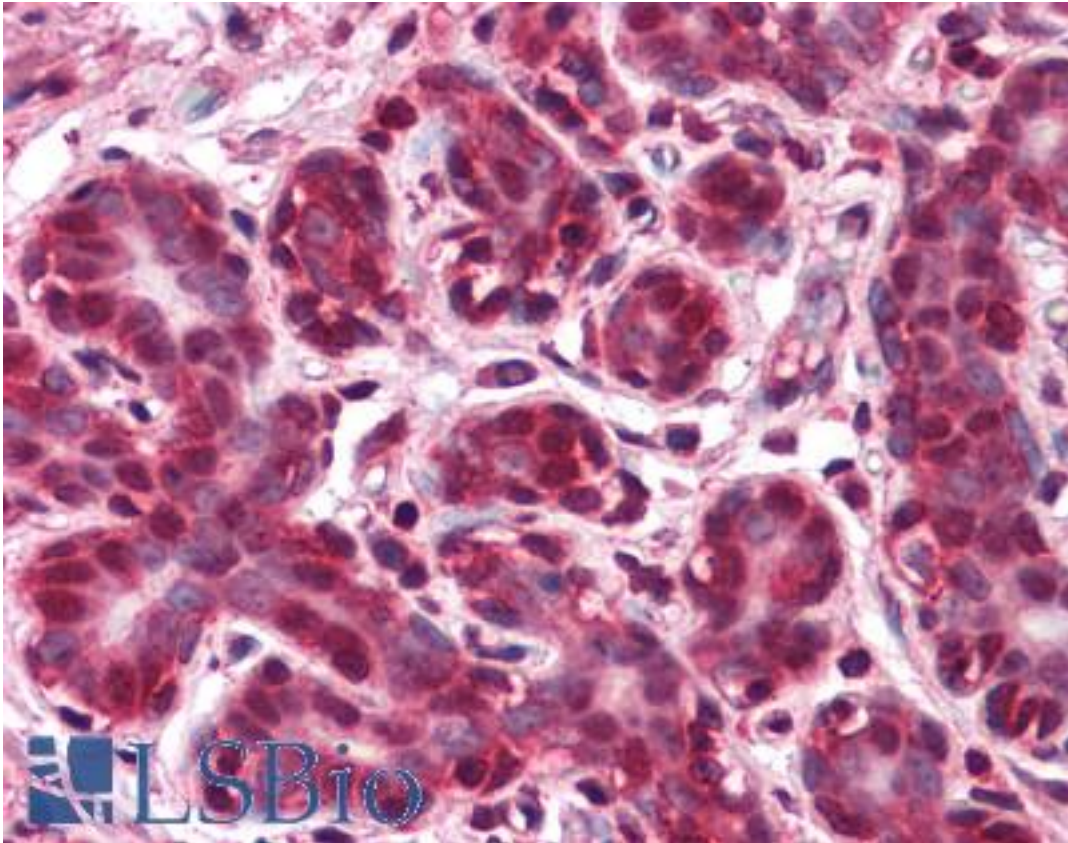


BRCC45 / BRE Rabbit anti-Human Polyclonal Antibody - LS-B4837 - LSBio

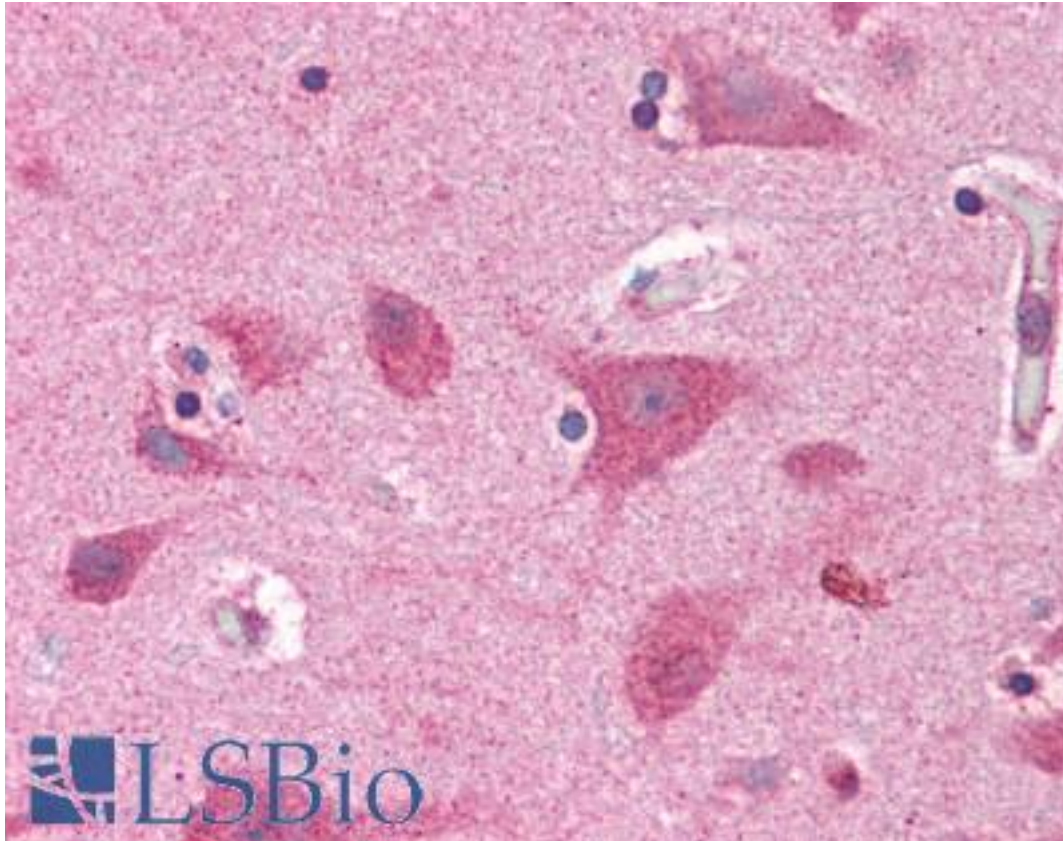
CatalogID:	LS-B4837
Validation:	This antibody replaces catalog number LS-C109391. It has been validated for use in the following assays: IHC-P.
Target:	brain and reproductive organ-expressed (TNFRSF1A modulator) (BRE)
Synonyms:	BRE Antibody, BRCA1-A complex subunit BRE Antibody, BRCC45 Antibody, BRCC4 Antibody
Host	BRE antibody was produced in Rabbit
Clonality:	Polyclonal
Immunogen Species:	BRCC45 / BRE antibody was raised against Human
Immunogen:	BRCC45 / BRE antibody was raised against recombinant protein fragment containing a sequence corresponding to a region within amino acids 9 and 338 of BRE.
Specificity:	Human and mouse BRE. Predicted cross-reactivity based on amino acid sequence homology: mouse (99%), rat (98%), bovine (99%), zebrafish (85%).
Reactivity:	Human, Mouse
Purification:	Immunoaffinity purified
Presentation:	0.1 M Tris, 0.1M Glycine, 10% Glycerol (pH 7). 0.01% Thimerosal
Recommended Storage:	Aliquot and store at -20°C. Minimize freezing and thawing.
Uses:	IHC - Paraffin (10 µg/ml), ICC, Immunofluorescence (1:100 - 1:200), Western blot (1:500 - 1:3000) (Optimal dilution to be determined by the researcher)
Size:	50 µl
Concentration:	1 mg/ml

Immunohistochemistry Image:



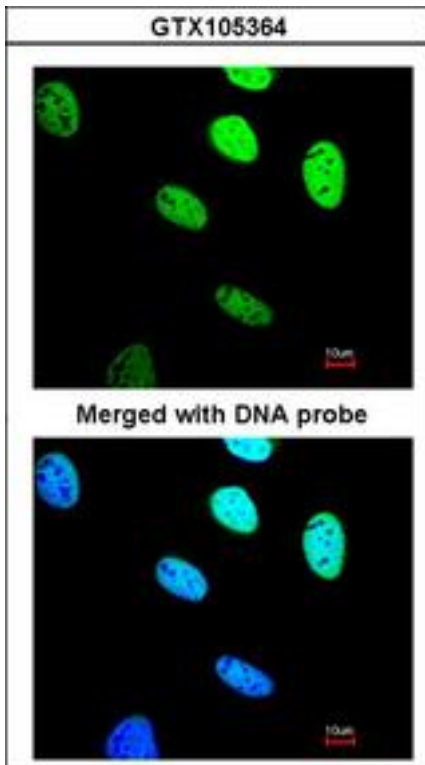
Anti-BRE antibody IHC of human breast. Immunohistochemistry of formalin-fixed, paraffin-embedded tissue after heat-induced antigen retrieval. Antibody LS-B4837 concentration 10 ug/ml.

Immunohistochemistry Image:



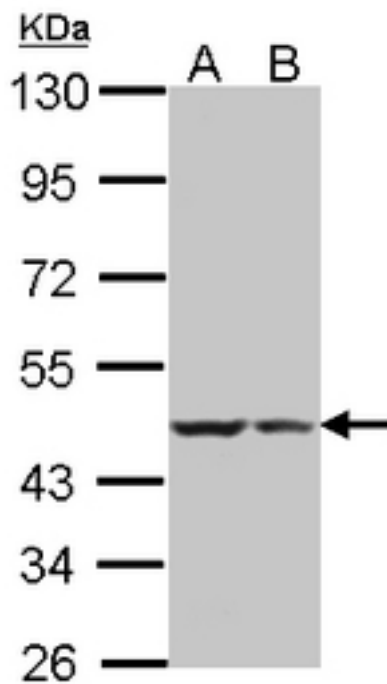
Anti-BRE antibody IHC of human brain, cortex. Immunohistochemistry of formalin-fixed, paraffin-embedded tissue after heat-induced antigen retrieval. Antibody LS-B4837 concentration 10 ug/ml.

Immunofluorescence Image:



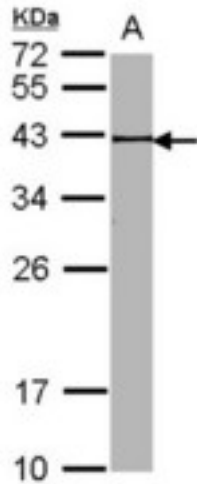
Immunofluorescence of paraformaldehyde-fixed HeLa, using BRE antibody at 1:200 dilution.

Western Blot Image:



Sample(30 g of whole cell lysate). A: HeLa S3. B: Hep G2. 7.5% SDS PAGE. BRE antibody diluted at 1:500.

Western Blot Image:



Sample (30 ug of whole cell lysate). A: NIH-3T3. 12% SDS PAGE. BRE antibody. BRE antibody diluted at 1:1000.

Requested From:

Japan

Laboratory Reagent For In Vitro Research Use Only

Not for resale without prior written consent from LifeSpan BioSciences, Inc.

Created on 9/23/2014

© 2014 LifeSpan BioSciences