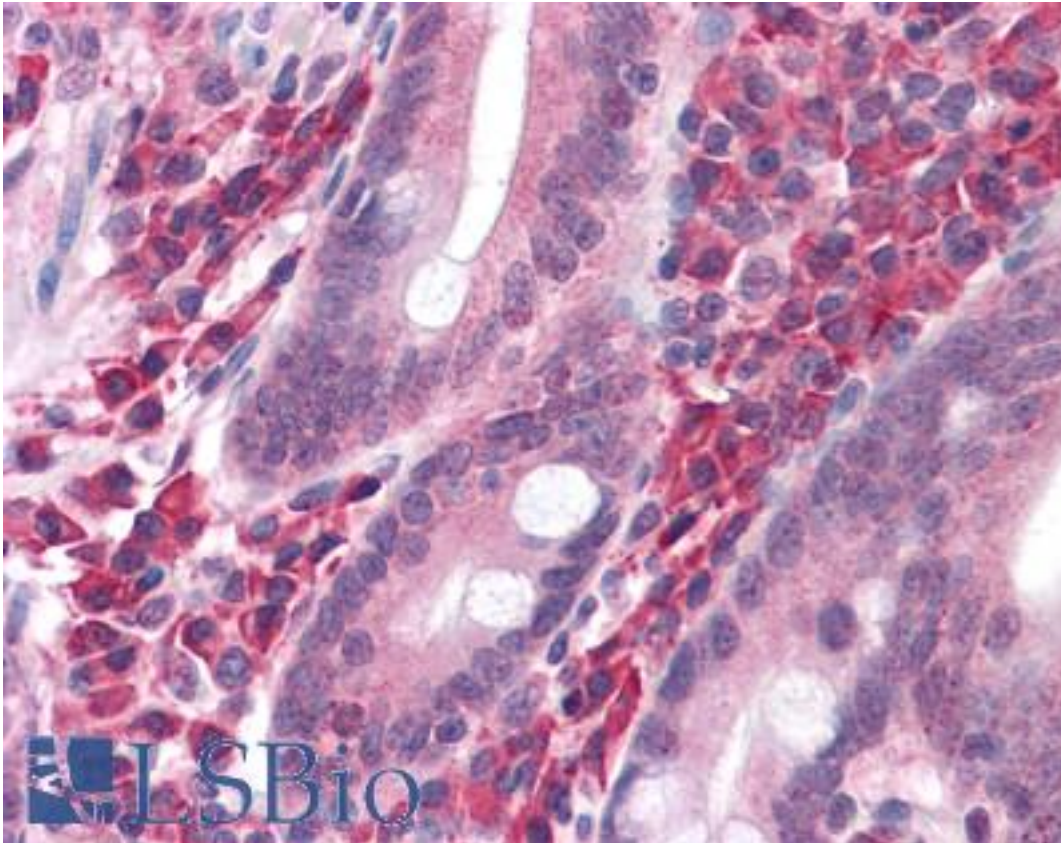


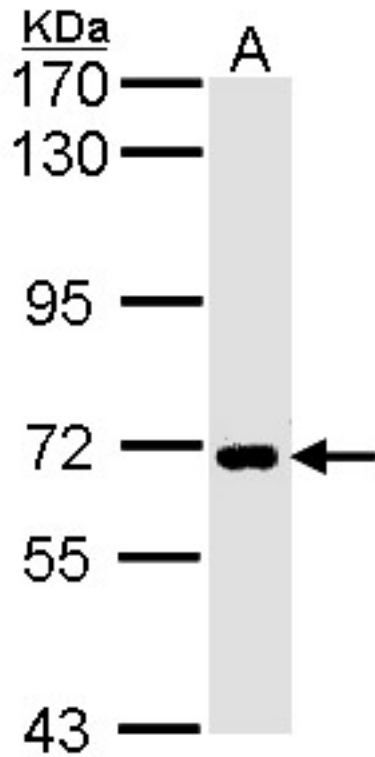
SLC20A1 / PIT1 Rabbit anti-Human Polyclonal Antibody - LS-B4835 - LSBio	
<b>CatalogID:</b>	LS-B4835
<b>Validation:</b>	This antibody replaces catalog number LS-C109389. It has been validated for use in the following assays: IHC-P.
<b>Target:</b>	solute carrier family 20 (phosphate transporter), member 1 (SLC20A1)
<b>Synonyms:</b>	SLC20A1 Antibody, GLVR1 Antibody, Pit-1 Antibody, PIT1 Antibody, Leukemia virus receptor 1 Antibody, Phosphate transporter 1 Antibody, Glvr-1 Antibody
<b>Family / Subfamily:</b>	Transporter / Phosphate transporter
<b>Host</b>	SLC20A1 antibody was produced in Rabbit
<b>Clonality:</b>	Polyclonal
<b>Immunogen Species:</b>	SLC20A1 / PIT1 antibody was raised against Human
<b>Immunogen:</b>	SLC20A1 / PIT1 antibody was raised against recombinant protein fragment containing a sequence corresponding to a region within amino acids 262 and 517 of SLC20A1.
<b>Specificity:</b>	Human SLC20A1. Predicted cross-reactivity based on amino acid sequence homology: mouse (95%), rat (94%), cat (95%).
<b>Reactivity:</b>	Human
<b>Purification:</b>	Immunoaffinity purified
<b>Presentation:</b>	0.1 M Tris-glycine, pH 7, 10% Glycerol, 0.01% Thimerosal
<b>Recommended Storage:</b>	Short term 4°C, long term aliquot and store at -20°C, avoid freeze thaw cycles.
<b>Uses:</b>	IHC - Paraffin (10 µg/ml), Western blot (1:500 - 1:3000) (Optimal dilution to be determined by the researcher)
<b>Size:</b>	100 µl
<b>Concentration:</b>	0.48 mg/ml

**Immunohistochemistry Image:**



Anti-SLC20A1 antibody IHC of human small intestine. Immunohistochemistry of formalin-fixed, paraffin-embedded tissue after heat-induced antigen retrieval. Antibody LS-B4835 concentration 10 ug/ml.

**Western Blot Image:**



Sample (30 ug of whole cell lysate). A: H1299. 7.5% SDS PAGE. SLC20A1 antibody. SLC20A1 antibody diluted at 1:1000.

**Requested From:**

Japan

Laboratory Reagent For In Vitro Research Use Only

Not for resale without prior written consent from LifeSpan BioSciences, Inc.

Created on 9/23/2014

© 2014 LifeSpan BioSciences