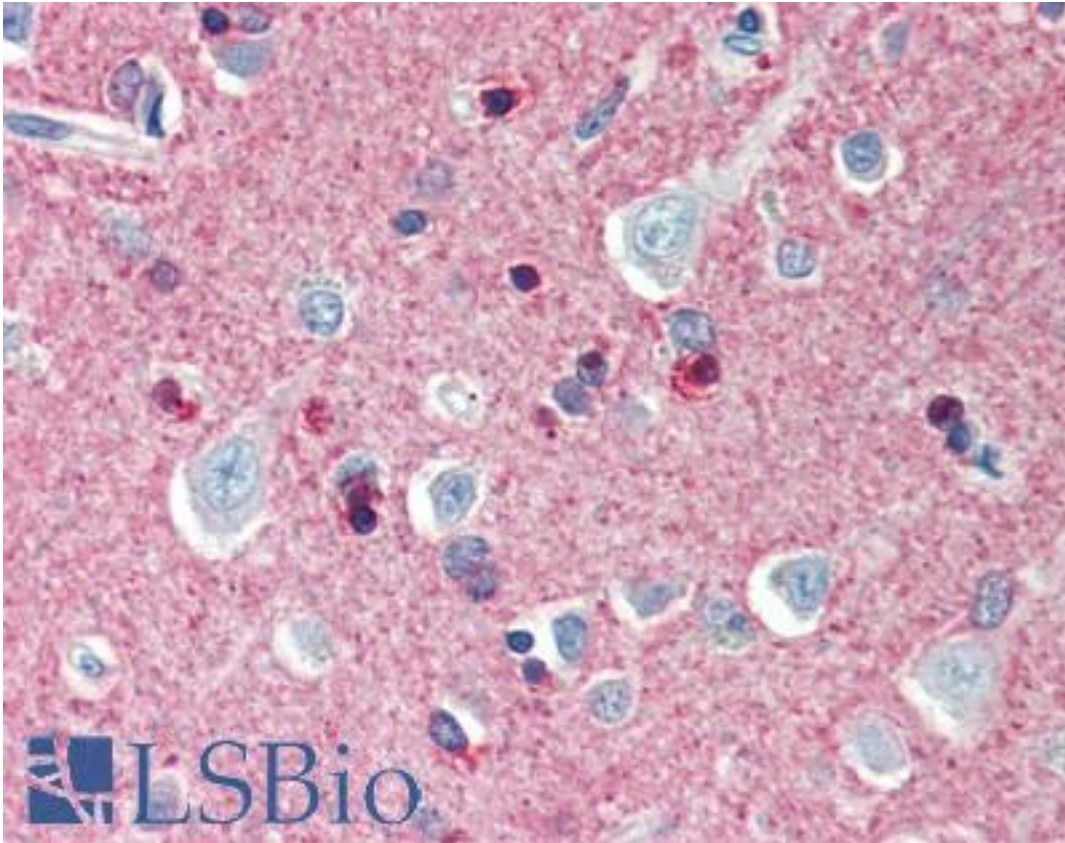


CRMP1 Rabbit anti-Human Polyclonal (C-Terminus) Antibody - LS-B483 - LSBio

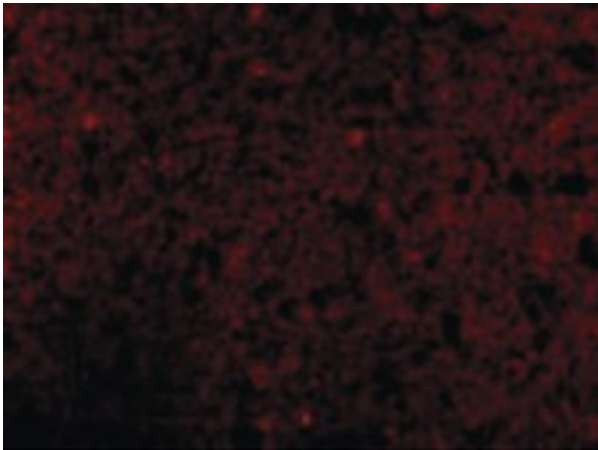
CatalogID:	LS-B483
Validation:	This antibody replaces catalog number LS-C19540. It has been validated for use in the following assays: IHC.
Target:	collapsin response mediator protein 1 (CRMP1)
Synonyms:	CRMP1 Antibody, DPYSL1 Antibody, CRMP-1 Antibody, DRP-1 Antibody, Dihydropyrimidinase-like 1 Antibody, DRP1 Antibody, ULIP3 Antibody, Unc-33-like phosphoprotein 3 Antibody, ULIP-3 Antibody
Family / Subfamily:	Signal Transduction
Host	CRMP1 antibody was produced in Rabbit
Clonality:	Polyclonal
Immunogen Species:	CRMP1 antibody was raised against Human
Antigen Type:	Synthetic peptide
Immunogen:	CRMP1 antibody was raised against synthetic peptide from human CRMP1.
Specificity:	15 amino acid peptide from near the carboxy terminus of human CRMP1
Epitope:	C-Terminus
Reactivity:	Human, Mouse, Rat
Purification:	Immunoaffinity purified
Presentation:	PBS, 0.02% sodium azide.
Recommended Storage:	Short term 4°C, long term aliquot and store at -20°C, avoid freeze thaw cycles. Store undiluted.
Usage Summary:	Immunohistochemistry: LS-B483 was validated for use in immunohistochemistry on a panel of 21 formalin-fixed, paraffin-embedded (FFPE) human tissues after heat induced antigen retrieval in pH 6.0 citrate buffer. After incubation with the primary antibody, slides were incubated with biotinylated secondary antibody, followed by alkaline phosphatase-streptavidin and chromogen. The stained slides were evaluated by a pathologist to confirm staining specificity. The optimal working concentration for LS-B483 was determined to be 5 ug/ml.
Uses:	IHC - Paraffin (5 µg/ml), Western blot (0.5 - 1 µg/ml) (Optimal dilution to be determined by the researcher)
Size:	50 µg
Concentration:	1 mg/ml

Immunohistochemistry Image:



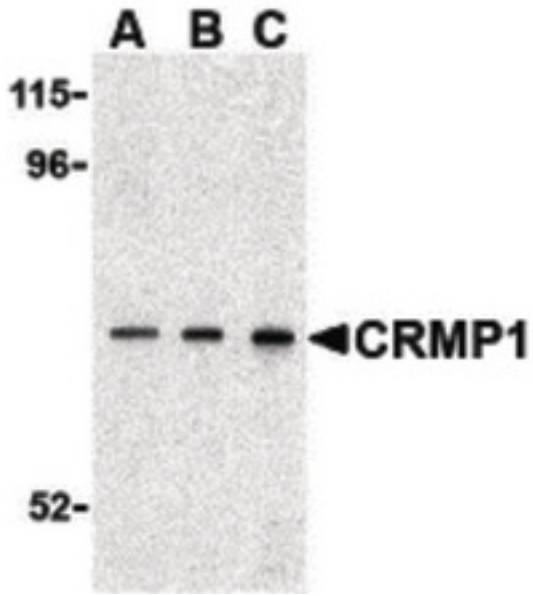
Anti-CRMP1 antibody IHC of human brain, cortex. Immunohistochemistry of formalin-fixed, paraffin-embedded tissue after heat-induced antigen retrieval. Antibody LS-B483 concentration 5 ug/ml.

Immunofluorescence Image:



Immunofluorescence of CRMP1 in Human Brain cells with CRMP1 antibody at 10 ug/ml.

Western Blot Image:



Western blot of CRMP1 in 3T3 cell lysate with CRMP1 antibody at (A) 0.5, (B) 1 and (C) 2 ug/ml.

Requested From:

Japan

Laboratory Reagent For In Vitro Research Use Only

Not for resale without prior written consent from LifeSpan BioSciences, Inc.

Created on 9/23/2014

© 2014 LifeSpan BioSciences