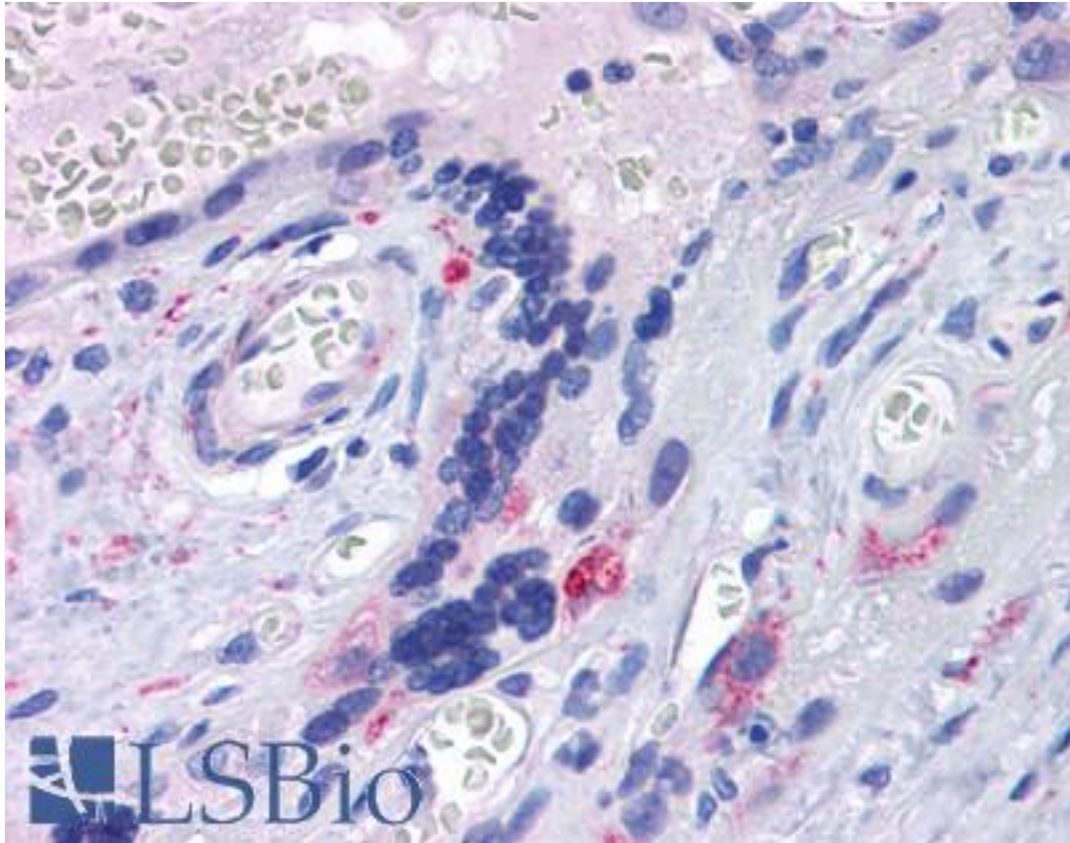


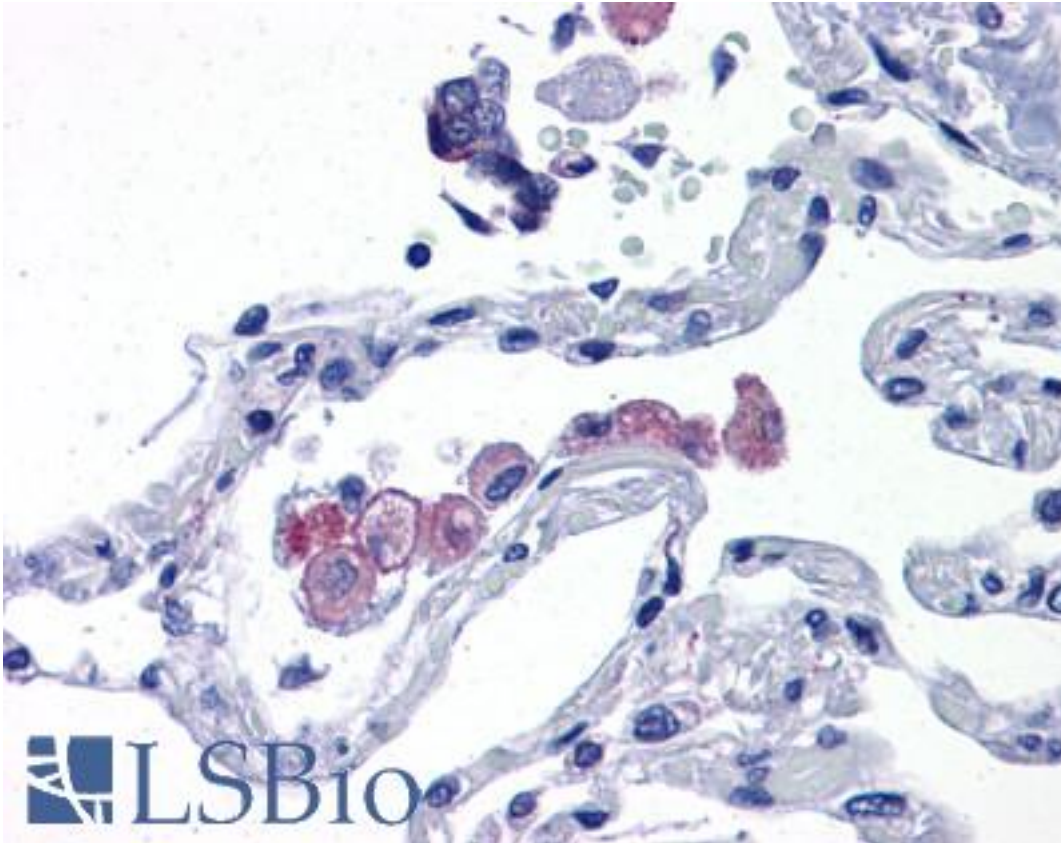
TLR7 Rabbit anti-Human Polyclonal (aa900-950) Antibody - LS-B4828 - LSBio	
CatalogID:	LS-B4828
Validation:	This antibody replaces catalog number LS-C47379. It has been validated for use in the following assays: IHC-P.
Target:	toll-like receptor 7 (TLR7)
Synonyms:	TLR7 Antibody, Toll-like receptor 7 Antibody
Family / Subfamily:	Toll-like Receptor / not assigned-Toll-like Receptor
Host	TLR7 antibody was produced in Rabbit
Clonality:	Polyclonal
Isotype:	IgG
Immunogen Species:	TLR7 antibody was raised against Human
Antigen Type:	Synthetic peptide
Immunogen:	TLR7 antibody was raised against synthetic peptide from human TLR7.
Specificity:	A portion of amino acids 900-950 of human TLR7
Epitope:	aa900-950
Reactivity:	Human, Chimpanzee, Monkey
Purification:	Protein G purified
Presentation:	PBS, 0.2% gelatin, 0.05% sodium azide.
Recommended Storage:	Short term 4°C, long term aliquot and store at -20°C, avoid freeze thaw cycles.
Uses:	IHC - Paraffin (10 µg/ml), Western blot (0.5 - 2 µg/ml), Flow Cytometry (Optimal dilution to be determined by the researcher)
Size:	50 µg
Concentration:	0.5 mg/ml

Immunohistochemistry Image:



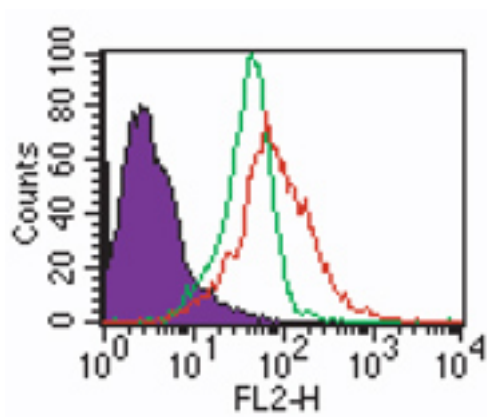
Anti-TLR7 antibody IHC of human placenta. Immunohistochemistry of formalin-fixed, paraffin-embedded tissue after heat-induced antigen retrieval. Antibody LS-B4828 concentration 10 ug/ml.

Immunohistochemistry Image:



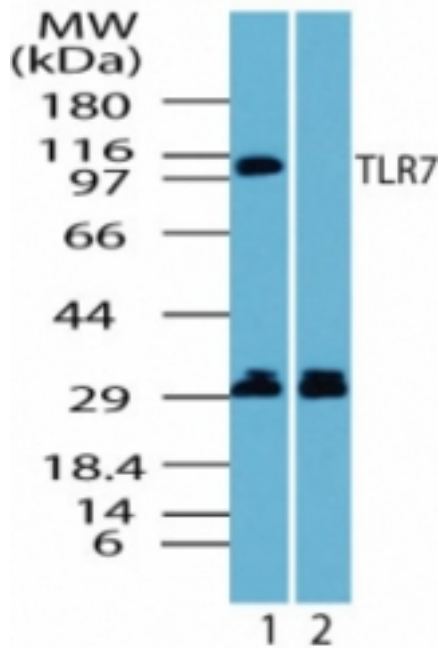
Anti-TLR7 antibody IHC of human lung. Immunohistochemistry of formalin-fixed, paraffin-embedded tissue after heat-induced antigen retrieval. Antibody LS-B4828 concentration 10 ug/ml.

Flow Cytometry Image:



Intracellular staining by FACS analysis of TLR7 in human PBMCs using LS-B4828 at 2 ug/ml. Shaded histogram represents cells alone; green represents rabbit IgG isotype control, ; red represents anti-TLR7 antibody. Goat anti-rabbit PE, was used as secondary.

Western Blot Image:



Western blot of human TLR7 in Ramos cell lysate in the 1) absence and 2) presence of immunizing peptide using antibody at 1 ug/ml.

Requested From:

Japan

Laboratory Reagent For In Vitro Research Use Only

Not for resale without prior written consent from LifeSpan BioSciences, Inc.

Created on 9/23/2014

© 2014 LifeSpan BioSciences