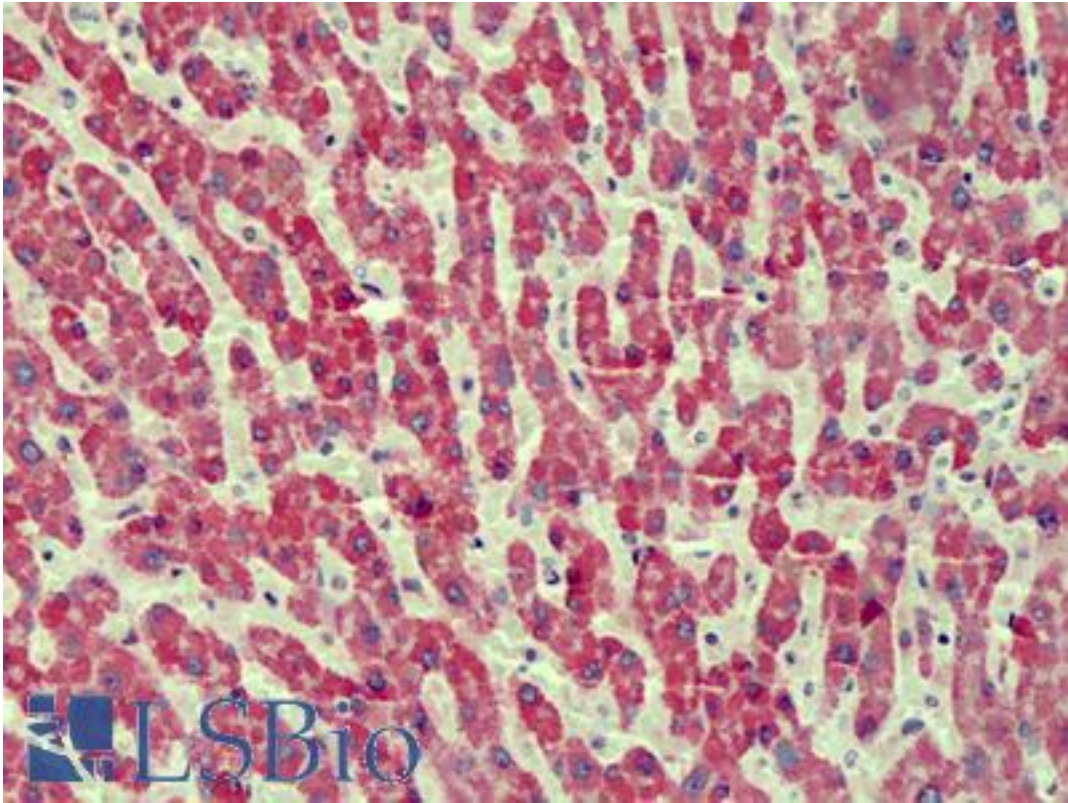


ANTXR2 / CMG2 Goat anti-Human Polyclonal (Internal) Antibody - LS-B4822 - LSBio

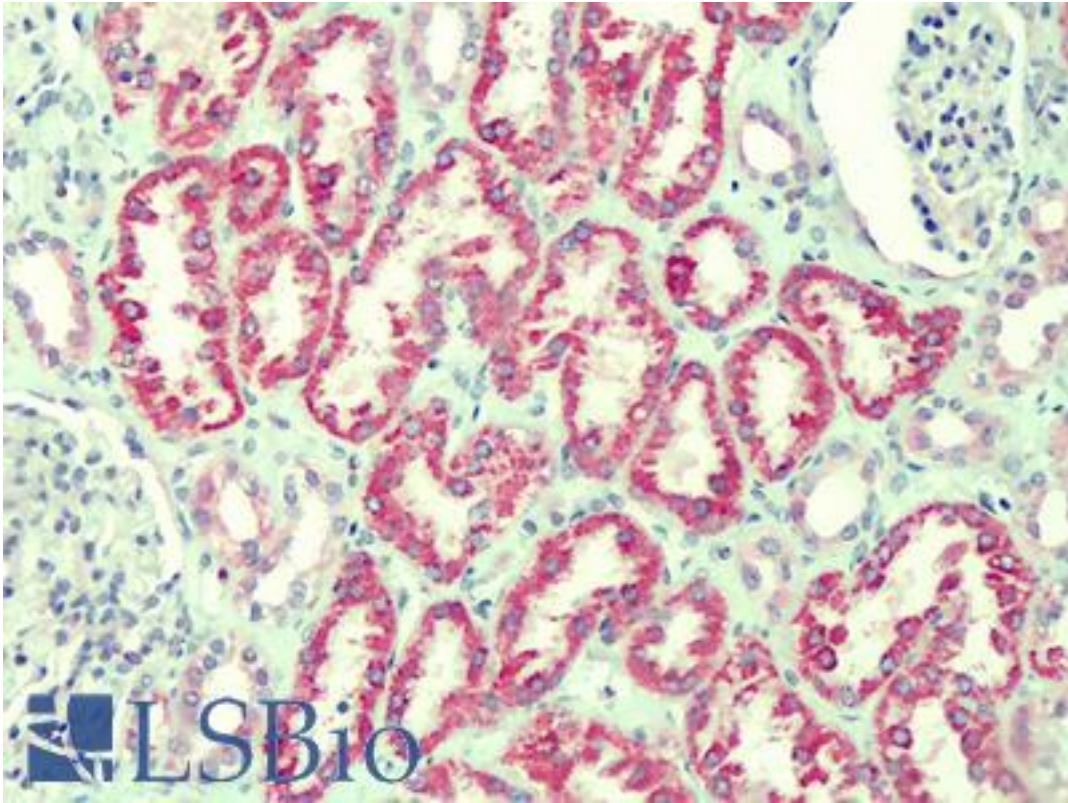
CatalogID:	LS-B4822
Validation:	This antibody replaces catalog number LS-C112981. It has been validated for use in the following assays: IHC-P.
Target:	anthrax toxin receptor 2 (ANTXR2)
Synonyms:	ANTXR2 Antibody, Anthrax toxin receptor 2 Antibody, CMG2 Antibody, CMG-2 Antibody, JHF Antibody, ISH Antibody
Host	ANTXR2 antibody was produced in Goat
Clonality:	Polyclonal
Immunogen Species:	ANTXR2 / CMG2 antibody was raised against Human
Antigen Type:	Synthetic peptide
Immunogen:	ANTXR2 / CMG2 antibody was raised against synthetic peptide C-HEGLKLANEQIQK from an internal region of human ANTXR2 (NP_477520.2; NP_001139266.1). Percent identity by BLAST analysis: Human, Orangutan, Gibbon, Marmoset, Elephant, Panda, Dog, Rabbit (100%); Mouse, Rat, Hamster, Bovine, Horse, Pig (92%); Bat (85%).
Specificity:	Human ANTXR2. This antibody is expected to recognize both reported isoforms (NP_477520.2; NP_001139266.1).
Epitope:	Internal
Reactivity:	Human, Orangutan, Gibbon, Monkey, Mouse, Dog, Rabbit
Predicted Reactivity:	Rat, Bovine, Hamster, Horse, Pig
Purification:	Immunoaffinity purified
Presentation:	Tris-buffered saline, pH 7.3, 0.5% BSA, 0.02% sodium azide
Recommended Storage:	Store at -20°C. Minimize freezing and thawing.
Usage Summary:	Peptide ELISA: antibody detection limit dilution 1:16000. Western blot: Approx 60kDa band observed in Human, Mouse and Rat Kidney lysates (calculated MW of approx 54kDa according to NP_477520.2; NP_001139266.1). Recommended concentration: 0.3-1 ug/ml.
Uses:	IHC - Paraffin (2.5 µg/ml), Western blot (0.3 - 1 µg/ml), ELISA (1:16000) (Optimal dilution to be determined by the researcher)
Size:	50 µg
Concentration:	0.5 mg/ml

Immunohistochemistry Image:



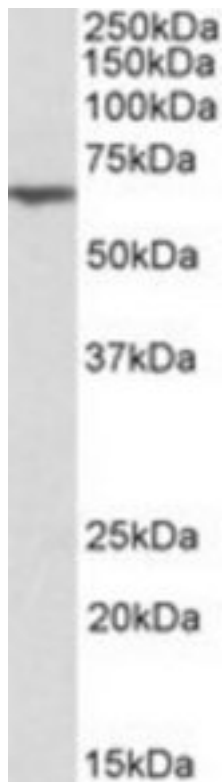
Anti-ANTXR2 antibody IHC of human liver. Immunohistochemistry of formalin-fixed, paraffin-embedded tissue after heat-induced antigen retrieval. Antibody LS-B4822 concentration 2.5 ug/ml.

Immunohistochemistry Image:



Anti-ANTXR2 antibody IHC of human kidney. Immunohistochemistry of formalin-fixed, paraffin-embedded tissue after heat-induced antigen retrieval. Antibody LS-B4822 concentration 2.5 ug/ml.

Western Blot Image:



ANTXR2 antibody (0.3 ug/ml) staining of Mouse Kidney lysate (35 ug protein/ml in RIPA buffer). Primary incubation was 1 hour. Detected by chemiluminescence.

Requested From:

Japan

Laboratory Reagent For In Vitro Research Use Only

Not for resale without prior written consent from LifeSpan BioSciences, Inc.

Created on 9/23/2014

© 2014 LifeSpan BioSciences