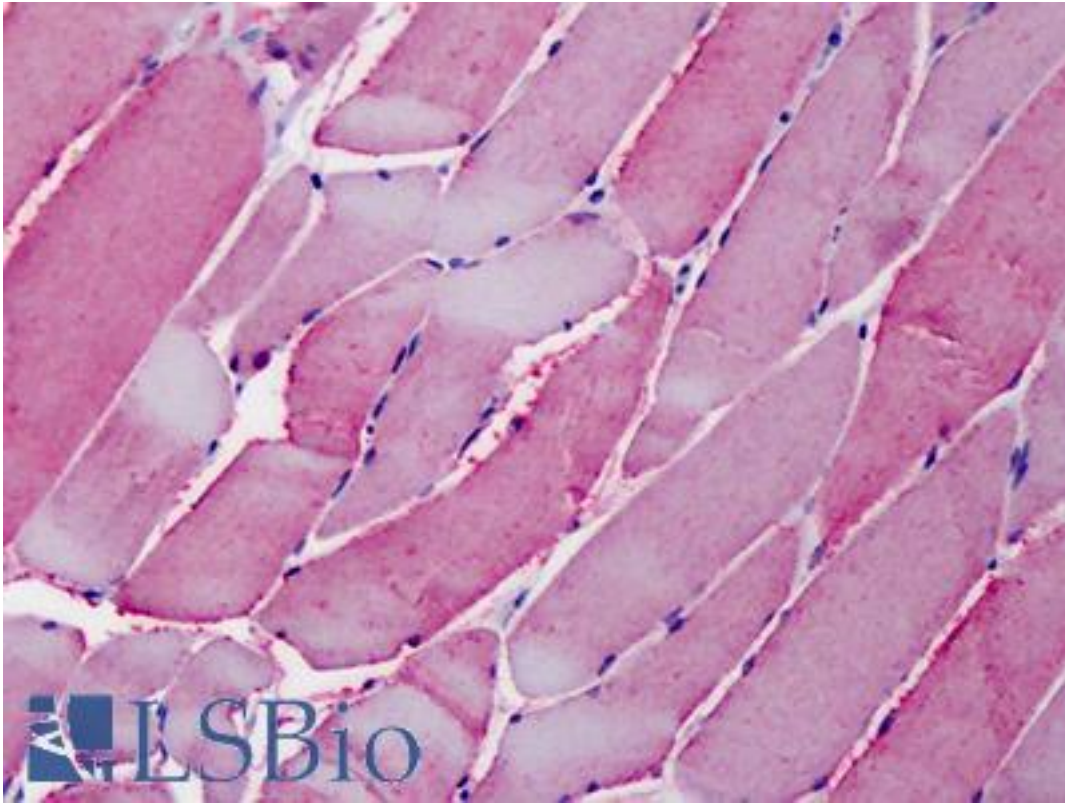


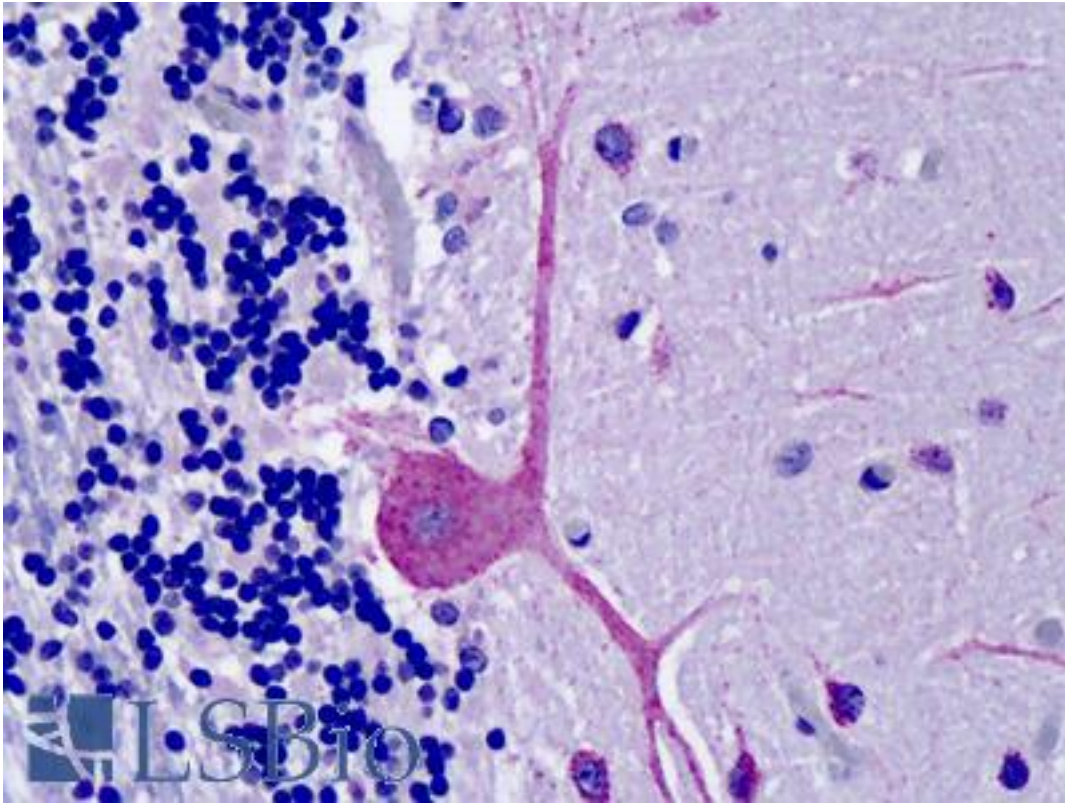
OSBPL1A / ORP1 Goat anti-Human Polyclonal (C-Terminus) Antibody - LS-B4811 - LSBio	
<b>CatalogID:</b>	LS-B4811
<b>Validation:</b>	This antibody replaces catalog number LS-C55206. It has been validated for use in the following assays: IHC-P.
<b>Target:</b>	oxysterol binding protein-like 1A (OSBPL1A)
<b>Synonyms:</b>	OSBPL1A Antibody, ORP-1 Antibody, ORP1 Antibody, OSBP-related protein 1 Antibody, OSBP8 Antibody, OSBPL1 Antibody, OSBPL1B Antibody
<b>Host</b>	OSBPL1A antibody was produced in Goat
<b>Clonality:</b>	Polyclonal
<b>Immunogen Species:</b>	OSBPL1A / ORP1 antibody was raised against Human
<b>Antigen Type:</b>	Synthetic peptide
<b>Immunogen:</b>	OSBPL1A / ORP1 antibody was raised against synthetic peptide C-YWDRNYFNLPDIY from the C-terminus of human OSBPL1A / ORP1 (NP_060500.3; NP_542164.2). Percent identity by BLAST analysis: Human, Gorilla, Orangutan, Gibbon, Monkey, Marmoset, Mouse, Rat, Elephant, Panda, Bovine, Dog, Horse, Pig, Opossum, Turkey, Chicken, Platypus (100%); Rabbit, Lizard, Xenopus (92%); Goat (85%).
<b>Specificity:</b>	Human OSBPL1A / ORP1. This antibody is expected to recognise both reported human isoforms of this protein.
<b>Epitope:</b>	C-Terminus
<b>Reactivity:</b>	Human, Gorilla, Orangutan, Gibbon, Monkey, Mouse, Rat, Bovine, Dog, Horse, Pig, Chicken
<b>Predicted Reactivity:</b>	Rabbit, Xenopus
<b>Purification:</b>	Immunoaffinity purified
<b>Presentation:</b>	Tris-buffered saline, pH 7.3, 0.5% BSA, 0.02% sodium azide
<b>Recommended Storage:</b>	Store at -20°C. Minimize freezing and thawing.
<b>Uses:</b>	IHC - Paraffin (5 µg/ml), Western blot (0.5 - 2 µg/ml), ELISA (1:16000) (Optimal dilution to be determined by the researcher)
<b>Size:</b>	50 µg
<b>Concentration:</b>	0.5 mg/ml

**Immunohistochemistry Image:**



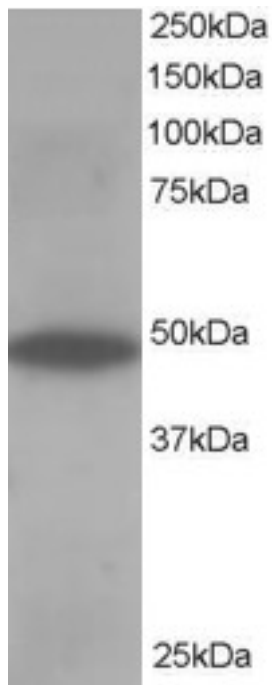
Anti-OSBPL1A / ORP1 antibody IHC of human skeletal muscle. Immunohistochemistry of formalin-fixed, paraffin-embedded tissue after heat-induced antigen retrieval. Antibody LS-B4811 concentration 5 ug/ml.

**Immunohistochemistry Image:**



Anti-OSBPL1A / ORP1 antibody IHC of human brain, cerebellum. Immunohistochemistry of formalin-fixed, paraffin-embedded tissue after heat-induced antigen retrieval. Antibody LS-B4811 concentration 5 ug/ml.

**Western Blot Image:**



Antibody staining (0.5 ug/ml) of Human Muscle lysate (RIPA buffer, 35 ug total protein per lane). Primary incubated for 1 hour. Detected by Western blot of chemiluminescence.

**Requested From:**

Japan

Laboratory Reagent For In Vitro Research Use Only

Not for resale without prior written consent from LifeSpan BioSciences, Inc.

Created on 9/23/2014

© 2014 LifeSpan BioSciences