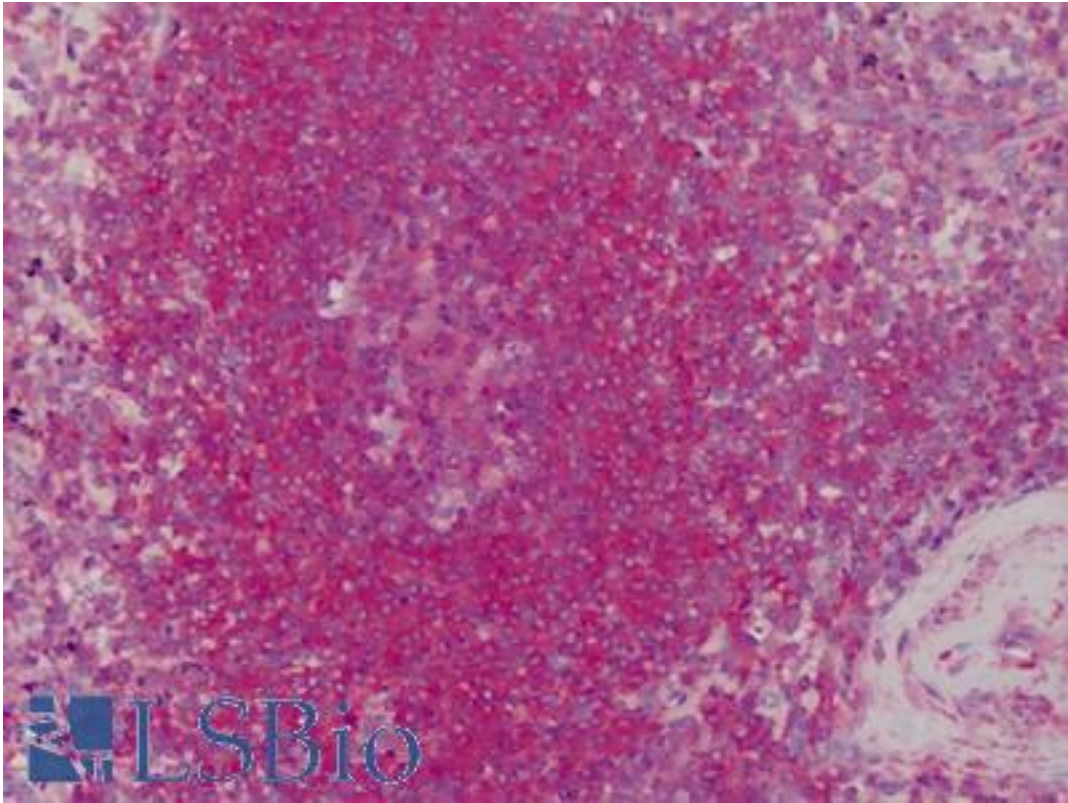


**TPM1 / Tropomyosin Rabbit anti-Human Polyclonal Antibody - LS-B4800 - LSBio**

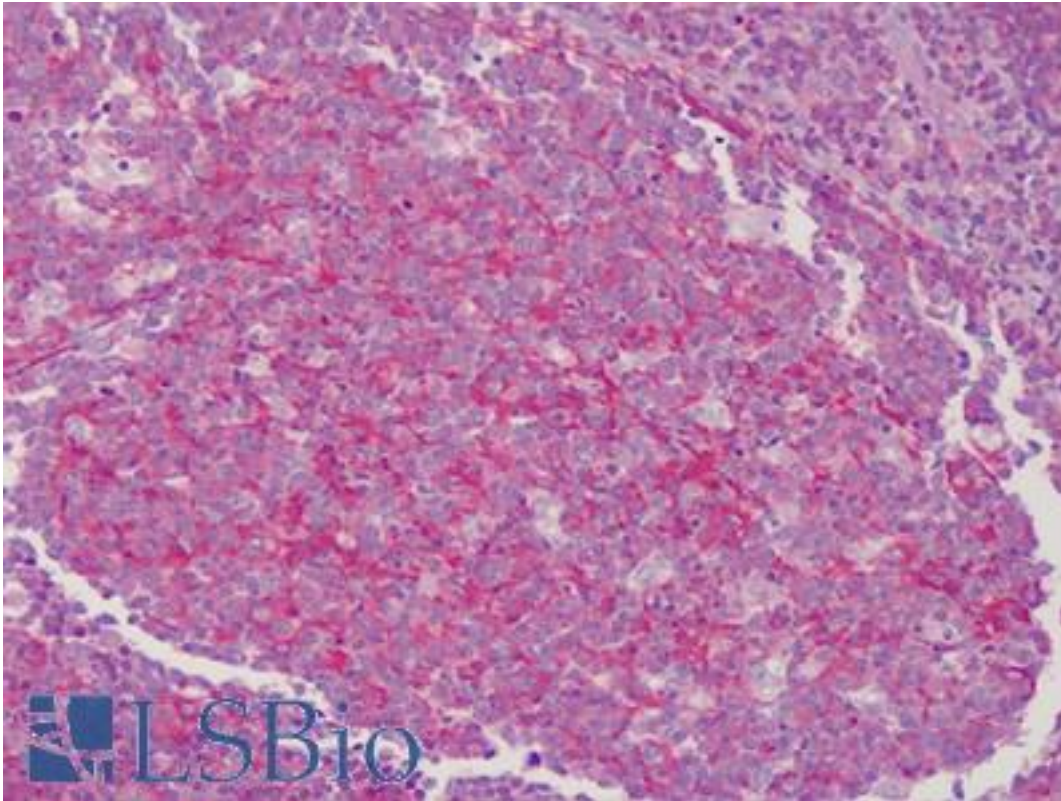
<b>CatalogID:</b>	LS-B4800
<b>Validation:</b>	This antibody replaces catalog number LS-C109530. It has been validated for use in the following assays: IHC-P.
<b>Target:</b>	tropomyosin 1 (alpha) (TPM1)
<b>Synonyms:</b>	TPM1 Antibody, Alpha-tropomyosin Antibody, C15orf13 Antibody, Cardiomyopathy, hypertrophic 3 Antibody, CMD1Y Antibody, CMH3 Antibody, HTM-alpha Antibody, Sarcomeric tropomyosin kappa Antibody, TMSA Antibody, Tropomyosin Antibody, Tropomyosin 1 (alpha) Antibody, Tropomyosin alpha-1 chain Antibody, Tropomyosin-1 Antibody
<b>Host</b>	TPM1 antibody was produced in Rabbit
<b>Clonality:</b>	Polyclonal
<b>Immunogen Species:</b>	TPM1 / Tropomyosin antibody was raised against Human
<b>Immunogen:</b>	TPM1 / Tropomyosin antibody was raised against recombinant protein fragment containing a sequence corresponding to a region within amino acids 92 - 283 of Human Tropomyosin 1.
<b>Specificity:</b>	Human Tropomyosin 1. Predicted cross-reactivity based on amino acid sequence homology: mouse (99%), rat (88%), rabbit (88%), bovine (88%), pig (88%).
<b>Reactivity:</b>	Human, Mouse
<b>Purification:</b>	Immunoaffinity purified
<b>Presentation:</b>	0.1 M Tris-glycine, pH 7, 20% Glycerol, 0.01% Thimerosal
<b>Recommended Storage:</b>	Aliquot and store at -20°C. Minimize freezing and thawing.
<b>Uses:</b>	IHC - Paraffin (10 µg/ml), Western blot (Optimal dilution to be determined by the researcher)
<b>Size:</b>	50 µl
<b>Concentration:</b>	0.91 mg/ml

**Immunohistochemistry Image:**



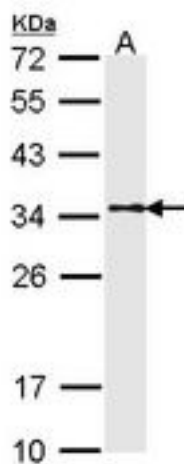
Anti-Tropomyosin 1 antibody IHC of human spleen. Immunohistochemistry of formalin-fixed, paraffin-embedded tissue after heat-induced antigen retrieval. Antibody LS-B4800 concentration 10 ug/ml.

**Immunohistochemistry Image:**



Anti-Tropomyosin 1 antibody IHC of human tonsil. Immunohistochemistry of formalin-fixed, paraffin-embedded tissue after heat-induced antigen retrieval. Antibody LS-B4800 concentration 10 ug/ml.

**Western Blot Image:**



Sample (30 ug of whole cell lysate). A: A431. 12% SDS PAGE. TPM1 antibody diluted at 1:1000.

Requested From:

Japan

Laboratory Reagent For In Vitro Research Use Only

Not for resale without prior written consent from LifeSpan BioSciences, Inc.

Created on 9/23/2014

© 2014 LifeSpan BioSciences