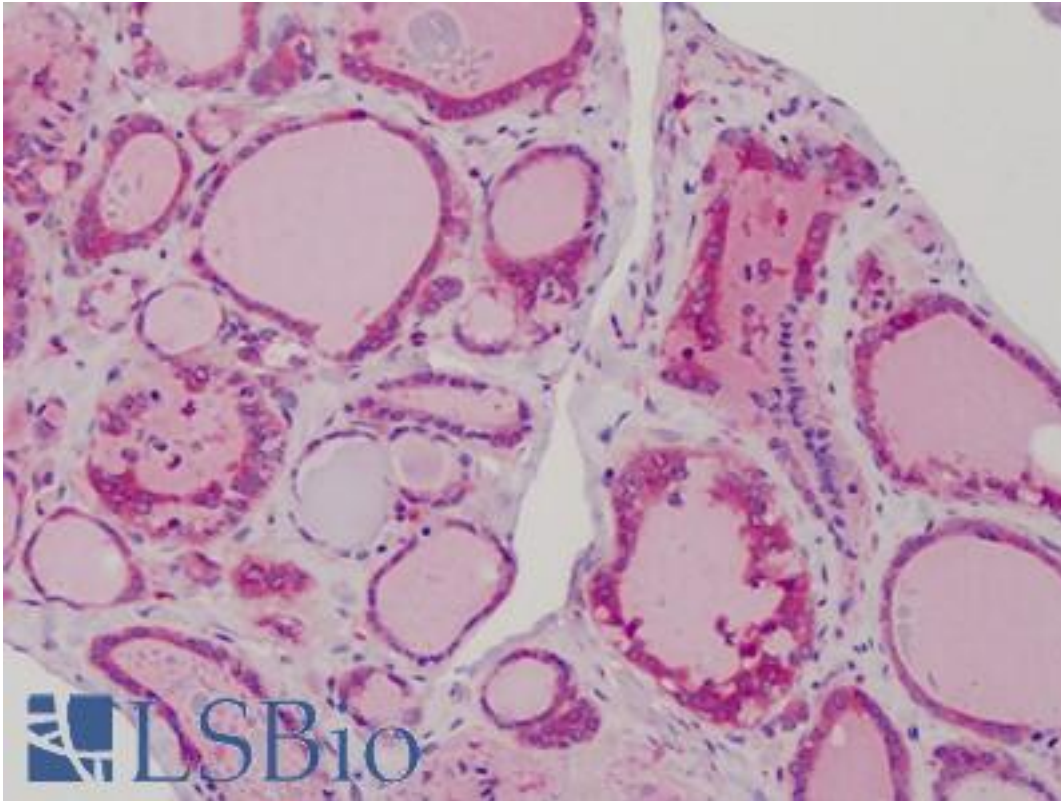


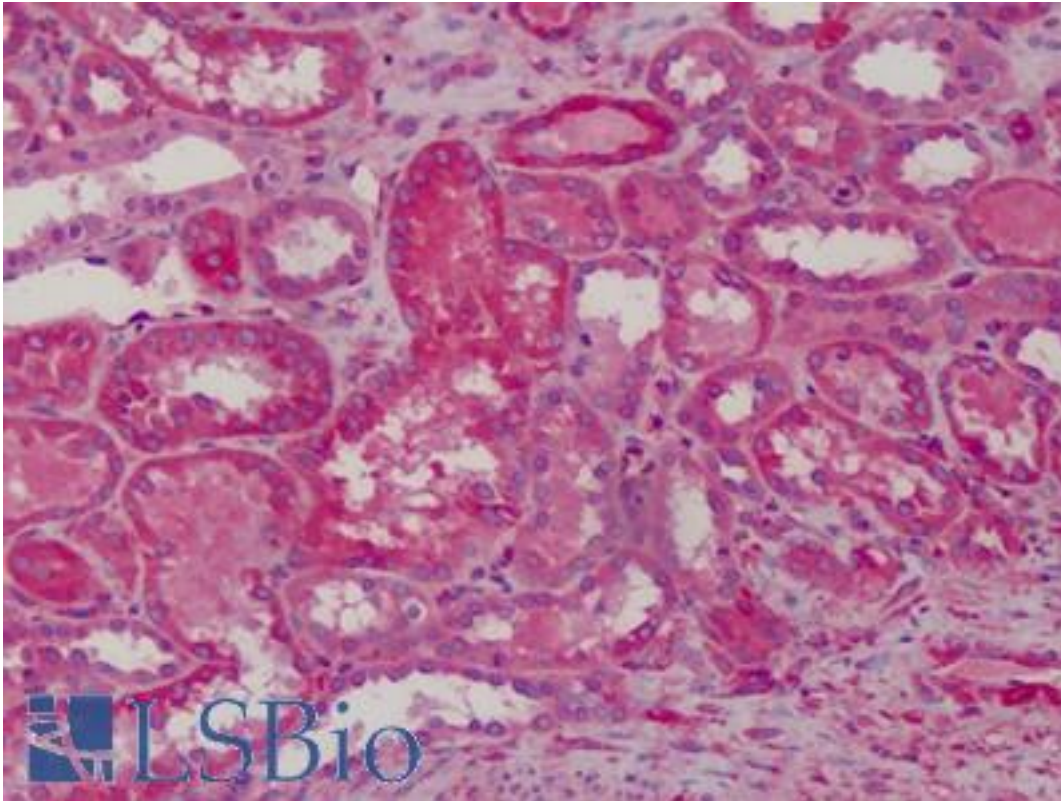
MAD2L1 / MAD2 Rabbit anti-Human Polyclonal Antibody - LS-B4797 - LSBio	
CatalogID:	LS-B4797
Validation:	This antibody replaces catalog number LS-C109522. It has been validated for use in the following assays: IHC-P.
Target:	MAD2 mitotic arrest deficient-like 1 (yeast) (MAD2L1)
Synonyms:	MAD2L1 Antibody, HSMAD2 Antibody, MAD2 Antibody, MAD2-like protein 1 Antibody
Host	MAD2L1 antibody was produced in Rabbit
Clonality:	Polyclonal
Immunogen Species:	MAD2L1 / MAD2 antibody was raised against Human
Immunogen:	MAD2L1 / MAD2 antibody was raised against recombinant protein fragment containing a sequence corresponding to a region within amino acids 1 and 174 of Human MAD2.
Specificity:	Human Mad2L1. Predicted cross-reactivity based on amino acid sequence homology: mouse (94%), rat (95%).
Reactivity:	Human
Purification:	Immunoaffinity purified
Presentation:	0.1 M Tris-glycine, pH 7, 20% Glycerol, 0.01% Thimerosal
Recommended Storage:	Aliquot and store at -20°C. Minimize freezing and thawing.
Uses:	IHC - Paraffin (10 µg/ml), Western blot (1:500 - 1:3000) (Optimal dilution to be determined by the researcher)
Size:	50 µl
Concentration:	1 mg/ml

Immunohistochemistry Image:



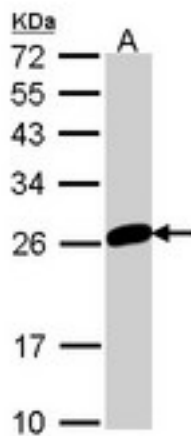
Anti-MAD2L1 antibody IHC of human thyroid. Immunohistochemistry of formalin-fixed, paraffin-embedded tissue after heat-induced antigen retrieval. Antibody LS-B4797 concentration 10 ug/ml.

Immunohistochemistry Image:



Anti-MAD2L1 antibody IHC of human kidney. Immunohistochemistry of formalin-fixed, paraffin-embedded tissue after heat-induced antigen retrieval. Antibody LS-B4797 concentration 10 ug/ml.

Western Blot Image:



Sample (30 ug of whole cell lysate). A: 293T. 12% SDS PAGE. MAD2L1 antibody diluted at 1:1000.

Requested From:

Japan

Laboratory Reagent For In Vitro Research Use Only

Not for resale without prior written consent from LifeSpan BioSciences, Inc.

Created on 9/23/2014

© 2014 LifeSpan BioSciences