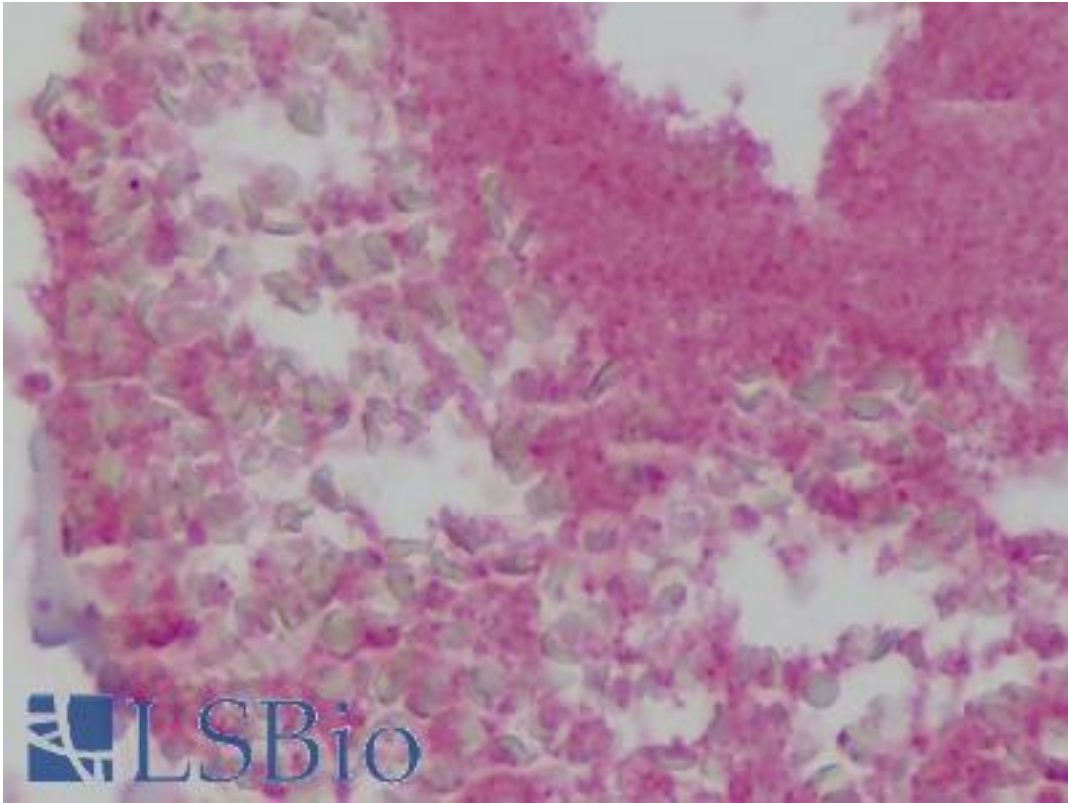


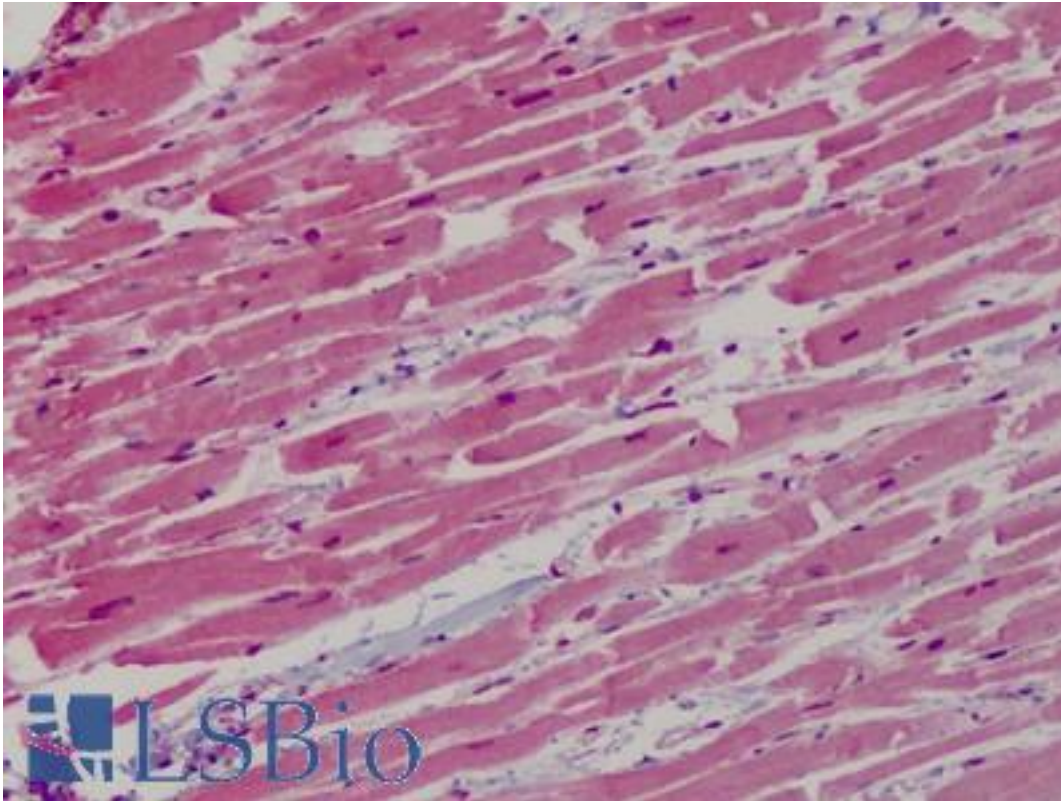
GP1BB / CD42c Rabbit anti-Human Polyclonal Antibody - LS-B4795 - LSBio	
CatalogID:	LS-B4795
Validation:	This antibody replaces catalog number LS-C109516. It has been validated for use in the following assays: IHC-P.
Target:	glycoprotein Ib (platelet), beta polypeptide (GP1BB)
Synonyms:	GP1BB Antibody, Antigen CD42b-beta Antibody, BS Antibody, CD42c antigen Antibody, CD42C Antibody, Glycoprotein ib beta Antibody, GP-Ib beta Antibody, gp1BB Antibody, BDPLT1 Antibody, GPIb-beta Antibody, GPIBB Antibody
Host	GP1BB antibody was produced in Rabbit
Clonality:	Polyclonal
Immunogen Species:	GP1BB / CD42c antibody was raised against Human
Antigen Type:	Synthetic peptide
Immunogen:	GP1BB / CD42c antibody was raised against synthetic peptide containing a sequence corresponding to a region within amino acids 56 and 118 of Human CD42c.
Specificity:	Human CD42c.
Reactivity:	Human
Purification:	Immunoaffinity purified
Presentation:	0.1 M Tris-glycine, pH 7, 10% Glycerol, 0.01% Thimerosal
Recommended Storage:	Aliquot and store at -20°C. Minimize freezing and thawing.
Uses:	IHC - Paraffin (10 µg/ml), Western blot (1:500 - 1:3000) (Optimal dilution to be determined by the researcher)
Size:	50 µl
Concentration:	0.75 mg/ml

Immunohistochemistry Image:



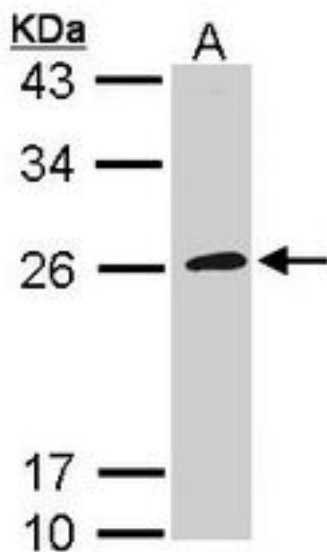
Anti-GP1BB / CD42c antibody IHC of human colon. Immunohistochemistry of formalin-fixed, paraffin-embedded tissue after heat-induced antigen retrieval. Antibody LS-B4795 concentration 10 ug/ml.

Immunohistochemistry Image:



Anti-GP1BB / CD42c antibody IHC of human heart. Immunohistochemistry of formalin-fixed, paraffin-embedded tissue after heat-induced antigen retrieval. Antibody LS-B4795 concentration 10 ug/ml.

Western Blot Image:



Sample (30 ug of whole cell lysate). A: Raji. 12% SDS PAGE. GP1BB antibody diluted at 1:1000.

Requested From:	Japan
Laboratory Reagent For In Vitro Research Use Only	
Not for resale without prior written consent from LifeSpan BioSciences, Inc.	
Created on 9/23/2014	
© 2014 LifeSpan BioSciences	