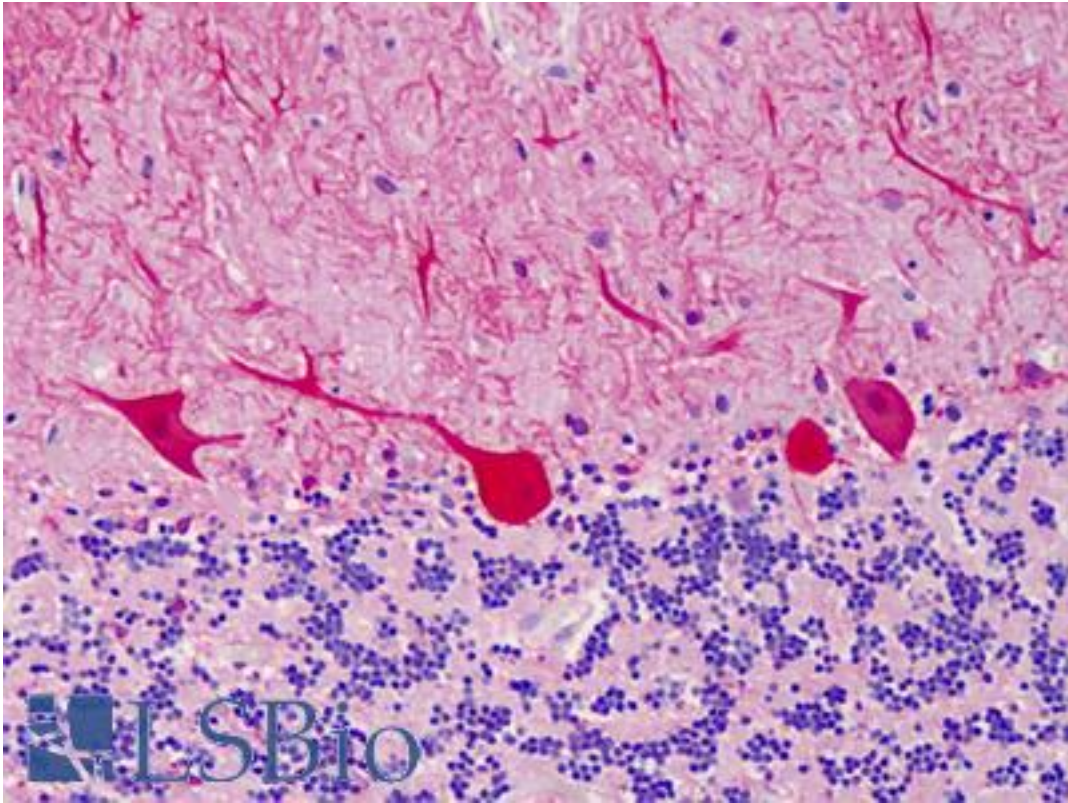


CARMA1 / CARD11 Rabbit anti-Human Polyclonal Antibody - LS-B4794 - LSBio

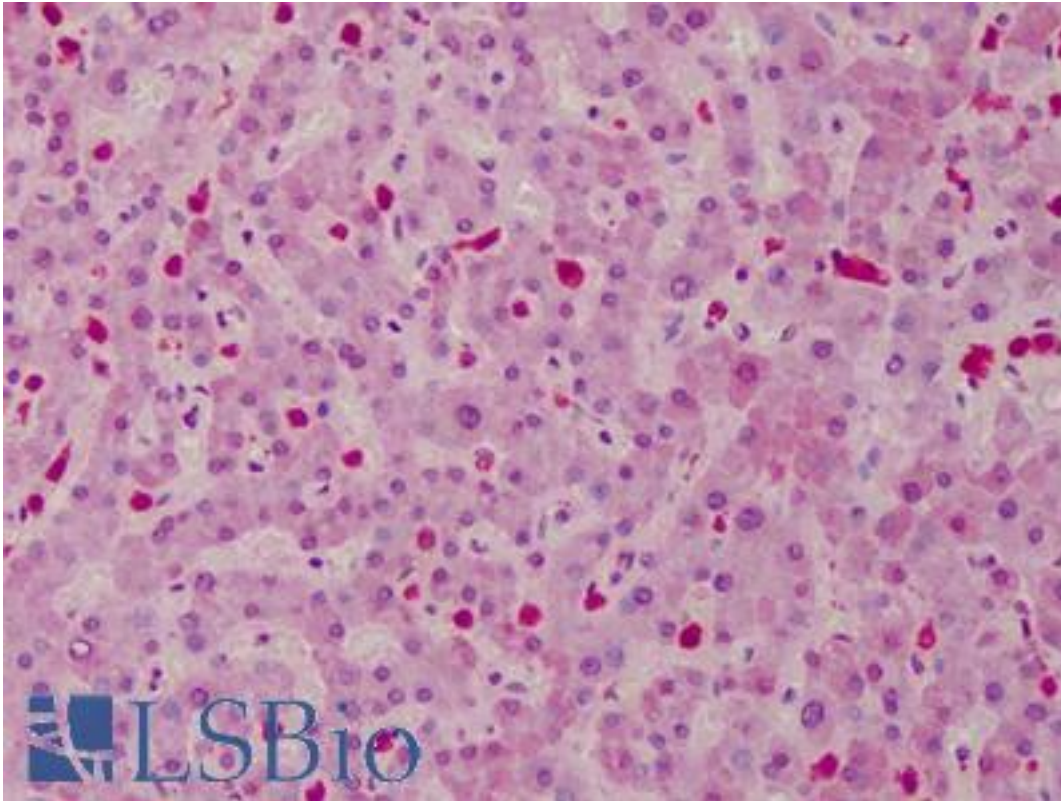
CatalogID:	LS-B4794
Validation:	This antibody replaces catalog number LS-C109513. It has been validated for use in the following assays: IHC-P.
Target:	caspase recruitment domain family, member 11 (CARD11)
Synonyms:	CARD11 Antibody, Card-maguk protein 1 Antibody, CARMA1 Antibody, Carma 1 Antibody, BIMP3 Antibody
Family / Subfamily:	Apoptosis
Host	CARD11 antibody was produced in Rabbit
Clonality:	Polyclonal
Immunogen Species:	CARMA1 / CARD11 antibody was raised against Human
Immunogen:	CARMA1 / CARD11 antibody was raised against recombinant protein fragment containing a sequence corresponding to a region within amino acids 18 and 238 of Human CARD11.
Specificity:	Human CARD11. Predicted cross-reactivity based on amino acid sequence homology: mouse (96%), bovine (98%).
Reactivity:	Human
Purification:	Immunoaffinity purified
Presentation:	0.1 M Tris-glycine, pH 7, 10% Glycerol, 0.01% Thimerosal
Recommended Storage:	Aliquot and store at -20°C. Minimize freezing and thawing.
Uses:	IHC - Paraffin (10 µg/ml), Western blot (1:500 - 1:3000) (Optimal dilution to be determined by the researcher)
Size:	50 µl
Concentration:	1.02 mg/ml

Immunohistochemistry Image:



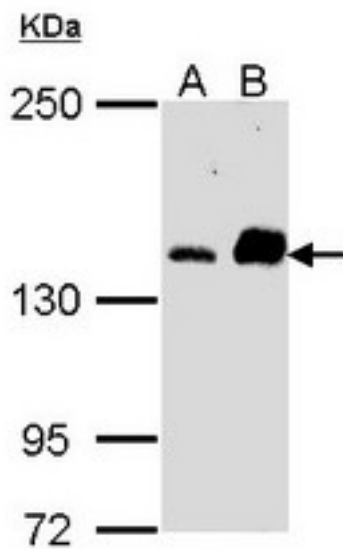
Anti-CARD11 antibody IHC of human cerebellum. Immunohistochemistry of formalin-fixed, paraffin-embedded tissue after heat-induced antigen retrieval. Antibody LS-B4794 concentration 10 ug/ml.

Immunohistochemistry Image:



Anti-CARD11 antibody IHC of human liver. Immunohistochemistry of formalin-fixed, paraffin-embedded tissue after heat-induced antigen retrieval. Antibody LS-B4794 concentration 10 ug/ml.

Western Blot Image:



Sample (30 ug of whole cell lysate). A: A431. B: Raji. 5% SDS PAGE. CARD11 antibody diluted at 1:1000.

Laboratory Reagent For In Vitro Research Use Only

Not for resale without prior written consent from LifeSpan BioSciences, Inc.

Created on 9/23/2014

© 2014 LifeSpan BioSciences