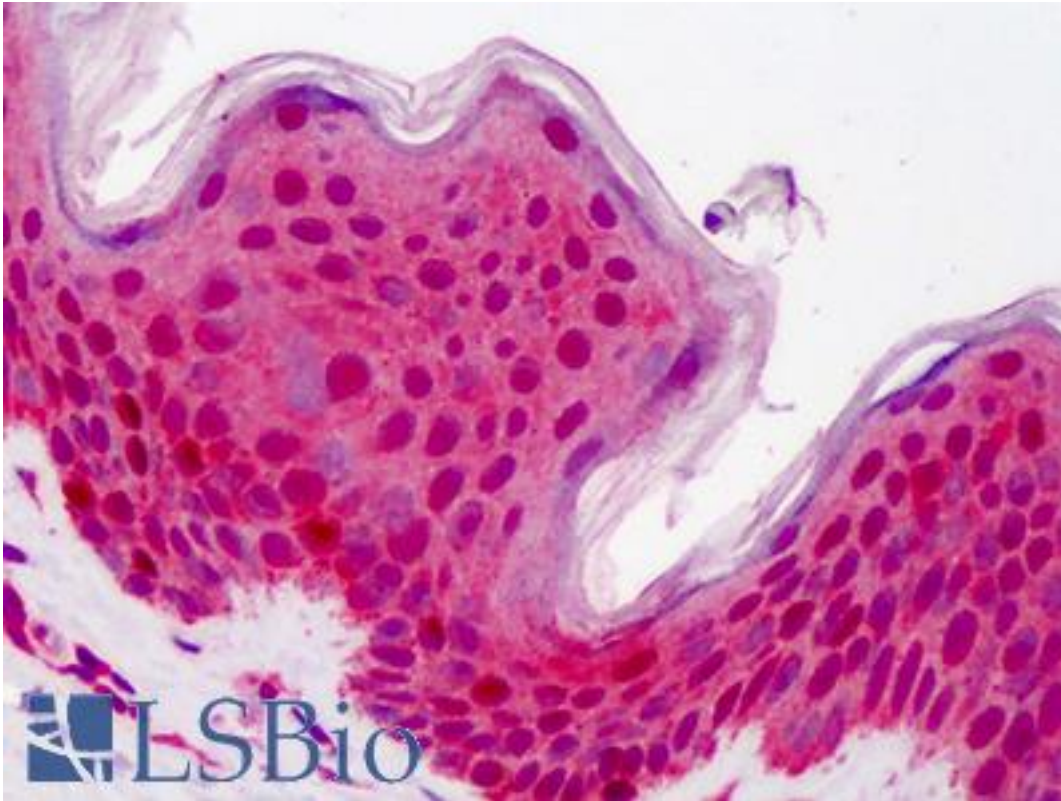


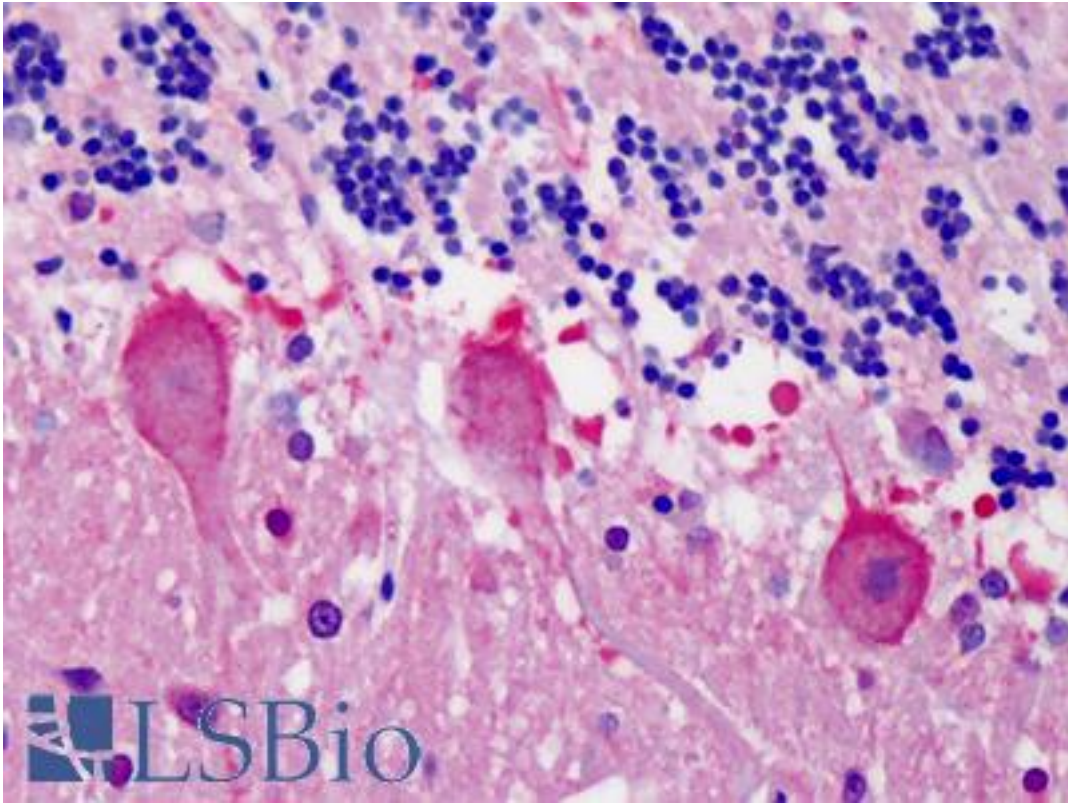
YWHAB / 14-3-3 Beta Rabbit anti-Human Polyclonal Antibody - LS-B4793 - LSBio	
CatalogID:	LS-B4793
Validation:	This antibody replaces catalog number LS-C109509. It has been validated for use in the following assays: IHC-P.
Target:	tyrosine 3-monooxygenase/tryptophan 5-monooxygenase activation protein, beta (YWHAB)
Synonyms:	YWHAB Antibody, 14-3-3 alpha Antibody, 14-3-3 Beta Antibody, 14-3-3 protein beta/alpha Antibody, GW128 Antibody, Protein 1054 Antibody, HS1 Antibody, KCIP-1 Antibody, YWHAA Antibody
Host	YWHAB antibody was produced in Rabbit
Clonality:	Polyclonal
Immunogen Species:	YWHAB / 14-3-3 Beta antibody was raised against Human
Immunogen:	YWHAB / 14-3-3 Beta antibody was raised against recombinant protein fragment containing a sequence corresponding to a region within amino acids 34 and 221 of Human 14-3-3 beta.
Specificity:	Human 14-3-3 beta. Predicted cross-reactivity based on amino acid sequence homology: mouse (84%), rat (97%), zebrafish (82%).
Reactivity:	Human, Zebrafish
Purification:	Immunoaffinity purified
Presentation:	0.1 M Tris-glycine, pH 7, 10% Glycerol, 0.01% Thimerosal
Recommended Storage:	Aliquot and store at -20°C. Minimize freezing and thawing.
Uses:	IHC - Paraffin (5 µg/ml), ICC, Immunofluorescence (1:100 - 1:200), Western blot (1:5000 - 1:20000) (Optimal dilution to be determined by the researcher)
Size:	50 µl
Concentration:	1 mg/ml

Immunohistochemistry Image:



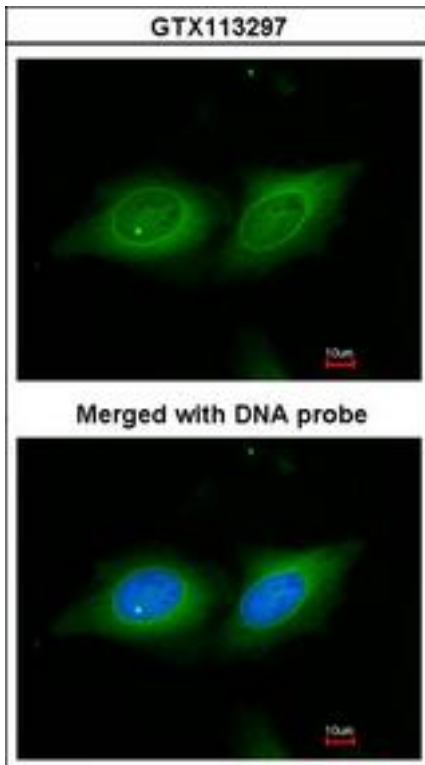
Anti-14-3-3 Beta antibody IHC of human skin. Immunohistochemistry of formalin-fixed, paraffin-embedded tissue after heat-induced antigen retrieval. Antibody LS-B4793 concentration 5 ug/ml.

Immunohistochemistry Image:



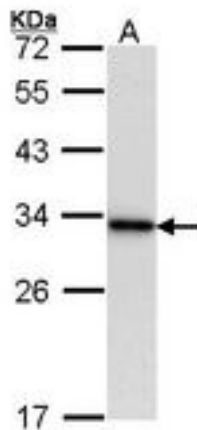
Anti-14-3-3 Beta antibody IHC of human cerebellum. Immunohistochemistry of formalin-fixed, paraffin-embedded tissue after heat-induced antigen retrieval. Antibody LS-B4793 concentration 5 ug/ml.

Immunofluorescence Image:



Immunofluorescence of paraformaldehyde-fixed HeLa, using 14-3-3 beta antibody at 1:200 dilution.

Western Blot Image:



Sample (30 ug of whole cell lysate). A: Raji. 12% SDS PAGE. YWHAB antibody diluted at 1:10000.

Requested From:

Japan

Laboratory Reagent For In Vitro Research Use Only

Not for resale without prior written consent from LifeSpan BioSciences, Inc.

Created on 9/23/2014

© 2014 LifeSpan BioSciences