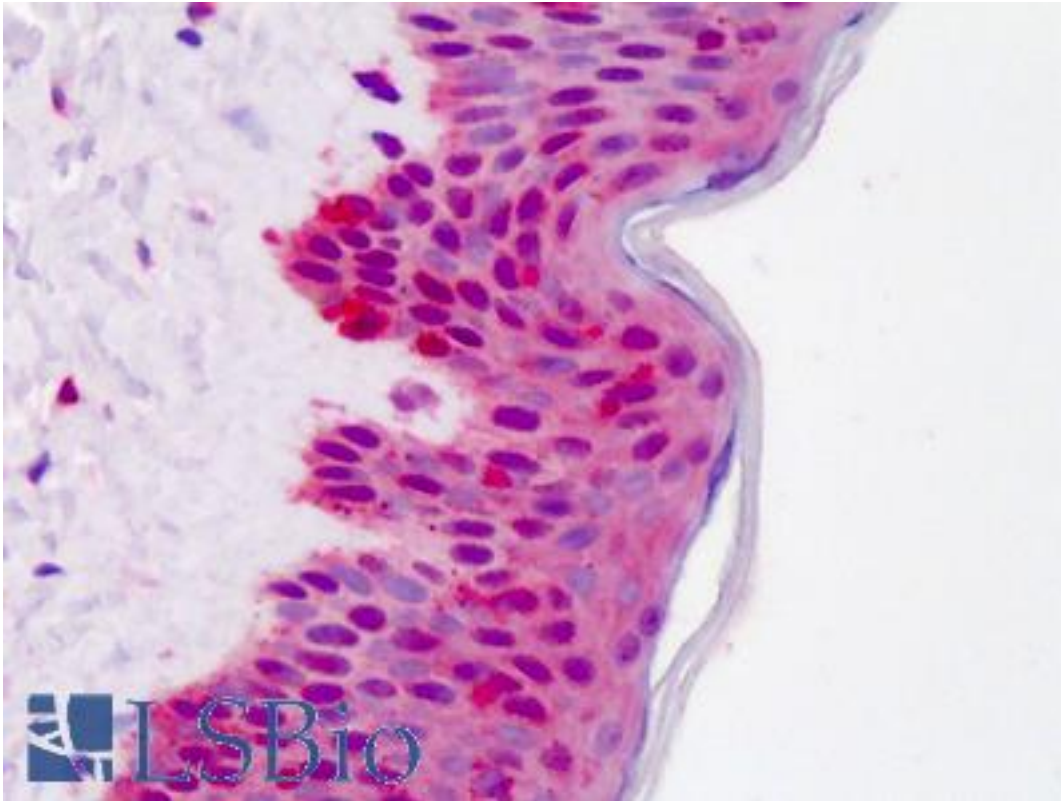


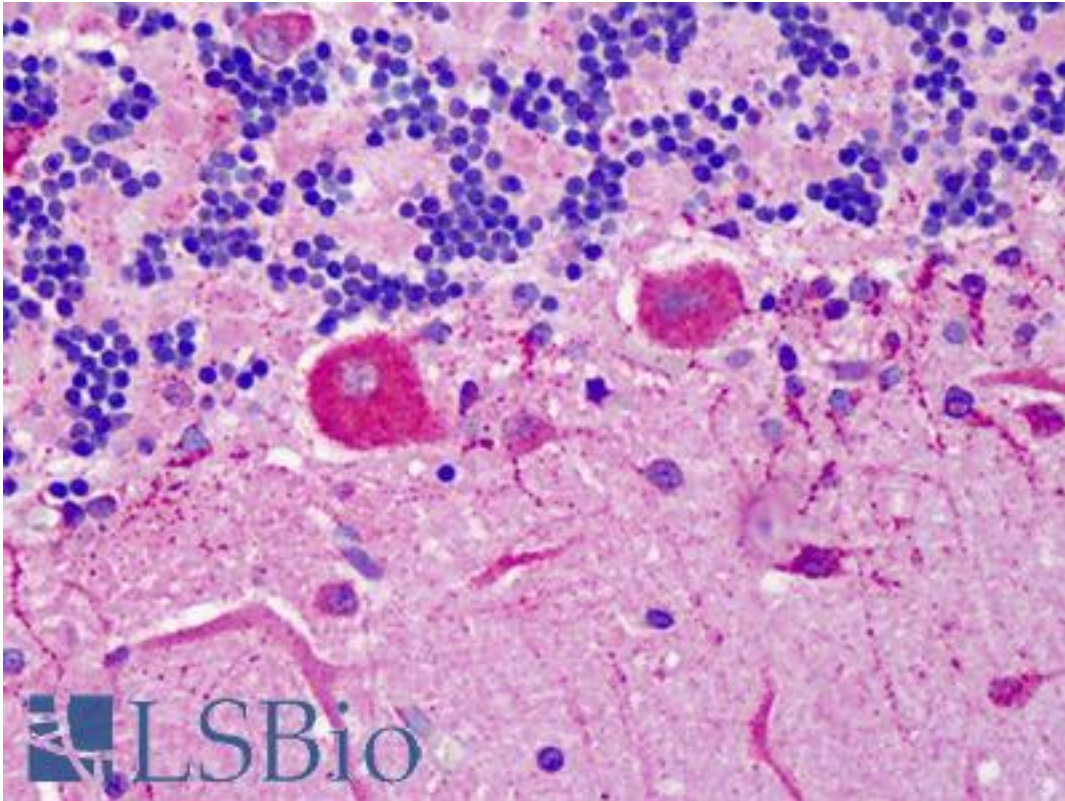
YWHAB / 14-3-3 Beta Rabbit anti-Human Polyclonal Antibody - LS-B4792 - LSBio	
<b>CatalogID:</b>	LS-B4792
<b>Validation:</b>	This antibody replaces catalog number LS-C109508. It has been validated for use in the following assays: IHC-P.
<b>Target:</b>	tyrosine 3-monooxygenase/tryptophan 5-monooxygenase activation protein, beta (YWHAB)
<b>Synonyms:</b>	YWHAB Antibody, 14-3-3 alpha Antibody, 14-3-3 Beta Antibody, 14-3-3 protein beta/alpha Antibody, GW128 Antibody, Protein 1054 Antibody, HS1 Antibody, KCIP-1 Antibody, YWHAA Antibody
<b>Host</b>	YWHAB antibody was produced in Rabbit
<b>Clonality:</b>	Polyclonal
<b>Immunogen Species:</b>	YWHAB / 14-3-3 Beta antibody was raised against Human
<b>Immunogen:</b>	YWHAB / 14-3-3 Beta antibody was raised against recombinant protein fragment containing a sequence corresponding to a region within amino acids 1 and 141 of 14-3-3 beta.
<b>Specificity:</b>	Human 14-3-3 beta. Predicted cross-reactivity based on amino acid sequence homology: mouse (85%), rat (97%), pig (100%), zebrafish (84%).
<b>Reactivity:</b>	Human, Zebrafish
<b>Purification:</b>	Immunoaffinity purified
<b>Presentation:</b>	0.1 M Tris-glycine, pH 7, 10% Glycerol, 0.01% Thimerosal
<b>Recommended Storage:</b>	Aliquot and store at -20°C. Minimize freezing and thawing.
<b>Uses:</b>	IHC - Paraffin (5 µg/ml), ICC, Immunofluorescence (1:100 - 1:200), Western blot (1:5000 - 1:20000) (Optimal dilution to be determined by the researcher)
<b>Size:</b>	50 µl
<b>Concentration:</b>	1 mg/ml

**Immunohistochemistry Image:**



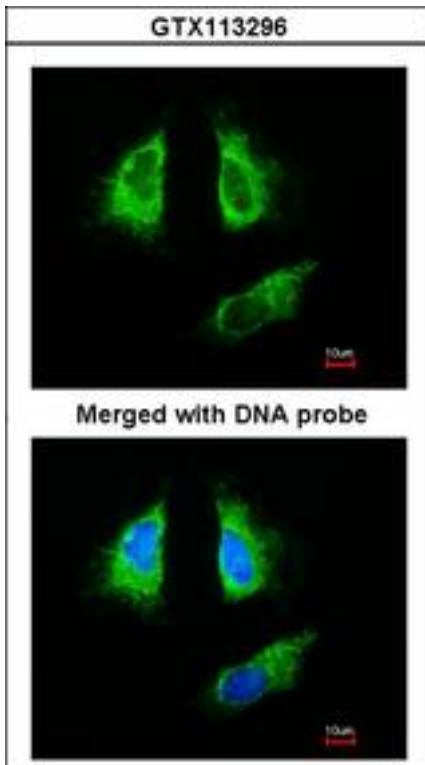
Anti-14-3-3 Beta antibody IHC of human skin. Immunohistochemistry of formalin-fixed, paraffin-embedded tissue after heat-induced antigen retrieval. Antibody LS-B4792 concentration 5 ug/ml.

**Immunohistochemistry Image:**



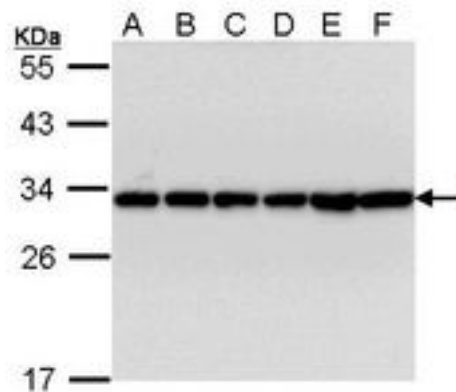
Anti-14-3-3 Beta antibody IHC of human cerebellum. Immunohistochemistry of formalin-fixed, paraffin-embedded tissue after heat-induced antigen retrieval. Antibody LS-B4792 concentration 5 ug/ml.

**Immunofluorescence Image:**



Immunofluorescence of paraformaldehyde-fixed HeLa, using 14-3-3 beta antibody at 1:200 dilution.

**Western Blot Image:**



Sample (30 ug of whole cell lysate). A: A431. B: H1299. C: Hela. D: Hep G2. E: Molt-4. F: Raji. 12% SDS PAGE. YWHAB antibody diluted at 1:10000.

**Requested From:**

Japan

Laboratory Reagent For In Vitro Research Use Only

Not for resale without prior written consent from LifeSpan BioSciences, Inc.

Created on 9/23/2014

© 2014 LifeSpan BioSciences