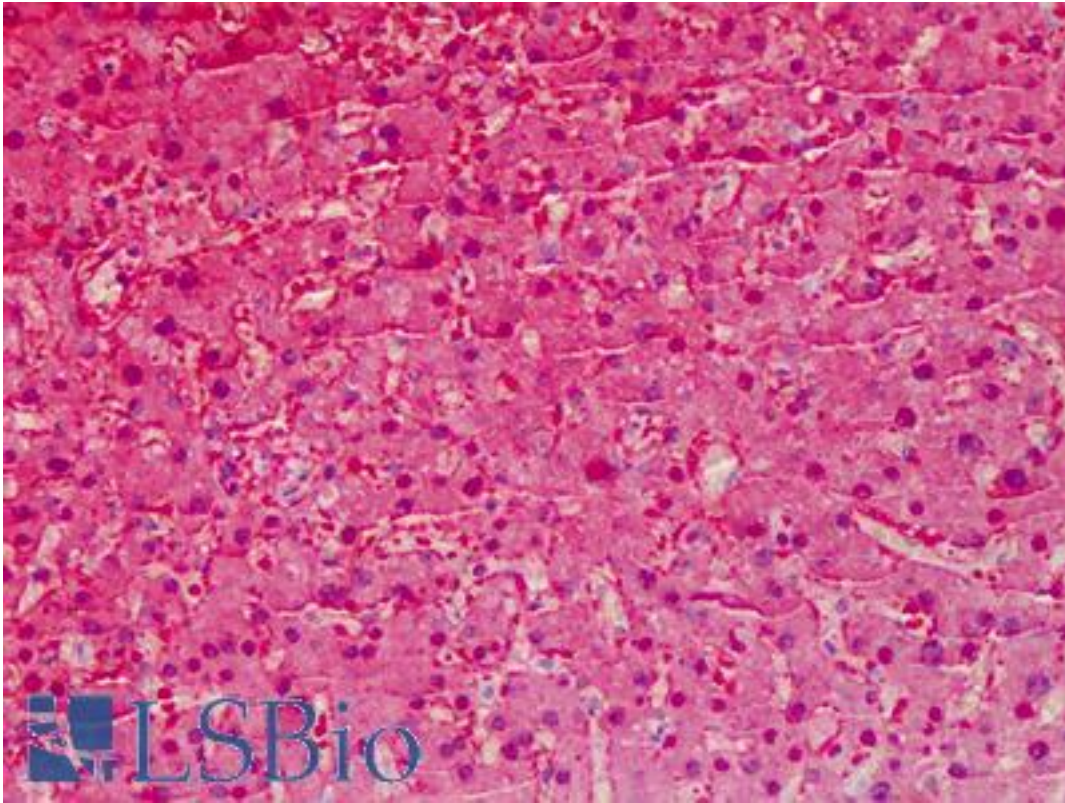


ARG1 / Arginase 1 Rabbit anti-Human Polyclonal Antibody - LS-B4789 - LSBio

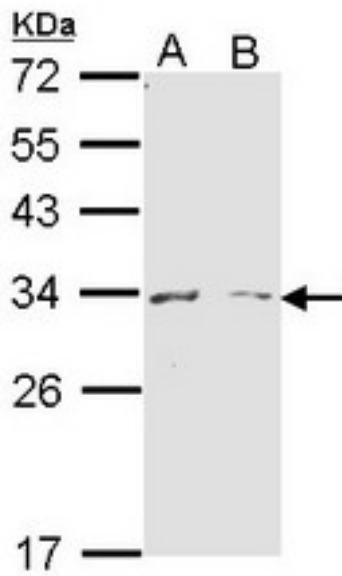
CatalogID:	LS-B4789
Validation:	This antibody replaces catalog number LS-C109493. It has been validated for use in the following assays: IHC-P.
Target:	arginase 1 (ARG1)
Synonyms:	ARG1 Antibody, Arginase, liver Antibody, Arginase 1 Antibody, Liver-type arginase Antibody, Liver arginase Antibody, Arginase-1 Antibody, Type I arginase Antibody
Host	ARG1 antibody was produced in Rabbit
Clonality:	Polyclonal
Immunogen Species:	ARG1 / Arginase 1 antibody was raised against Human
Immunogen:	ARG1 / Arginase 1 antibody was raised against recombinant protein fragment containing a sequence corresponding to a region within amino acids 1 and 145 of Human arginase I.
Specificity:	Human Arginase I. Predicted cross-reactivity based on amino acid sequence homology: mouse (85%), rat (83%), rabbit (90%), bovine (89%), pig (90%).
Reactivity:	Human, Mouse
Purification:	Immunoaffinity purified
Presentation:	0.1 M Tris-glycine, pH 7, 10% Glycerol, 0.01% Thimerosal
Recommended Storage:	Aliquot and store at -20°C. Minimize freezing and thawing.
Uses:	IHC - Paraffin (5 µg/ml), Western blot (1:500 - 1:3000) (Optimal dilution to be determined by the researcher)
Size:	50 µl
Concentration:	1 mg/ml

Immunohistochemistry Image:



Anti-ARG1 antibody IHC of human liver. Immunohistochemistry of formalin-fixed, paraffin-embedded tissue after heat-induced antigen retrieval. Antibody LS-B4789 concentration 5 ug/ml.

Western Blot Image:



Sample (30 ug of whole cell lysate). A: Molt-4. B: Raji. 12% SDS PAGE. ARG1 antibody diluted at 1:1000.

Requested From:

Japan

Laboratory Reagent For In Vitro Research Use Only

Not for resale without prior written consent from LifeSpan BioSciences, Inc.

Created on 9/23/2014

© 2014 LifeSpan BioSciences