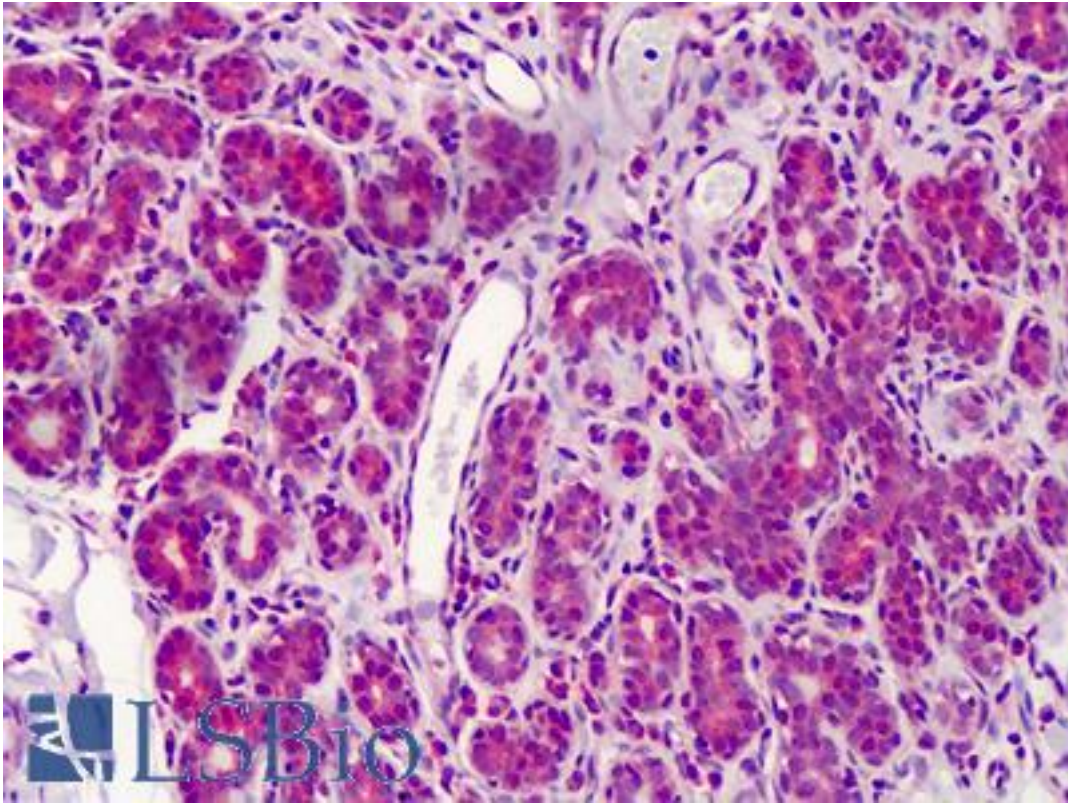


FANCC Rabbit anti-Human Polyclonal (C-Terminus) Antibody - LS-B4788 - LSBio

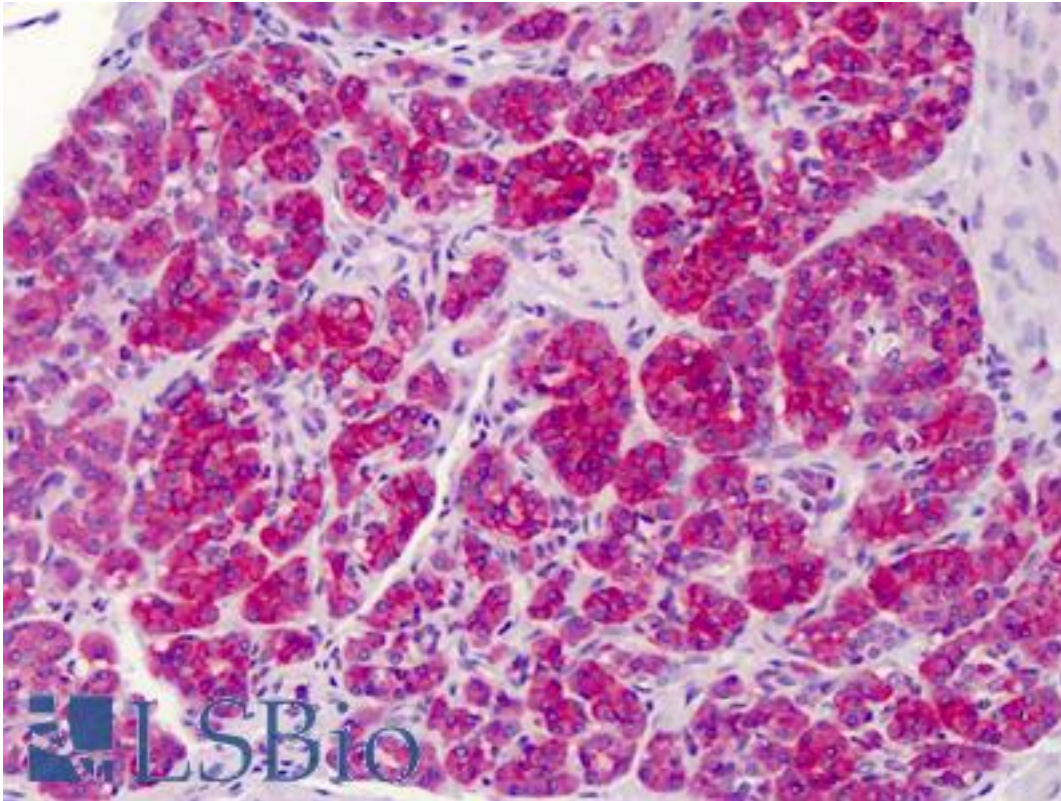
CatalogID:	LS-B4788
Validation:	This antibody replaces catalog number LS-C20109. It has been validated for use in the following assays: IHC-P.
Target:	Fanconi anemia, complementation group C (FANCC)
Synonyms:	FANCC Antibody, FAC Antibody, Fanconi anemia group C protein Antibody, FA3 Antibody, Protein FACC Antibody, FACC Antibody
Host	FANCC antibody was produced in Rabbit
Clonality:	Polyclonal
Isotype:	IgG
Immunogen Species:	FANCC antibody was raised against Human
Antigen Type:	Synthetic peptide
Immunogen:	FANCC antibody was raised against synthetic peptide from human FANCC.
Specificity:	A synthetic peptide corresponding to the C-terminal 15 amino acids, conjugated to a carrier protein
Epitope:	C-Terminus
Reactivity:	Human
Purification:	Affinity purified
Presentation:	PBS, pH 7.2, without preservatives.
Recommended Storage:	Short term 4°C, long term aliquot and store at -20°C, avoid freeze thaw cycles.
Uses:	IHC - Paraffin (10 µg/ml), Western blot (Optimal dilution to be determined by the researcher)
Size:	50 µg
Concentration:	1 mg/ml

Immunohistochemistry Image:



Anti-FANCC antibody IHC of human breast. Immunohistochemistry of formalin-fixed, paraffin-embedded tissue after heat-induced antigen retrieval. Antibody LS-B4788 concentration 10 ug/ml.

Immunohistochemistry Image:



Anti-FANCC antibody IHC of human pancreas. Immunohistochemistry of formalin-fixed, paraffin-embedded tissue after heat-induced antigen retrieval. Antibody LS-B4788 concentration 10 ug/ml.

Requested From:

Japan

Laboratory Reagent For In Vitro Research Use Only

Not for resale without prior written consent from LifeSpan BioSciences, Inc.

Created on 9/23/2014

© 2014 LifeSpan BioSciences