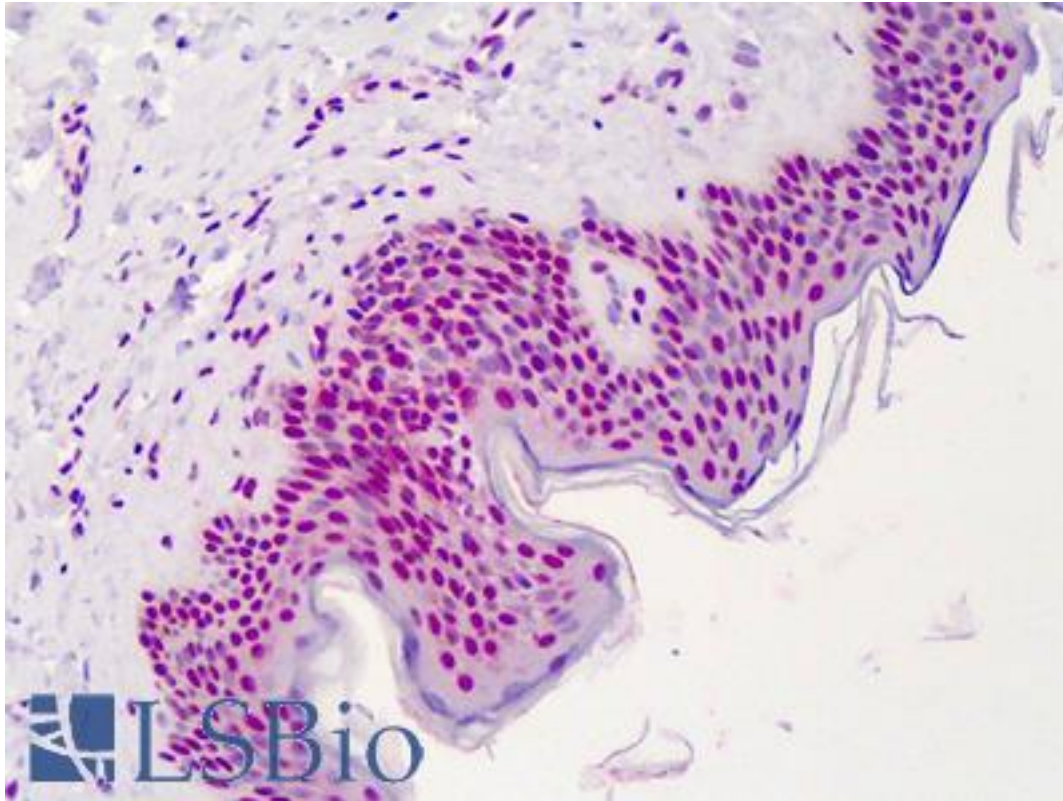


APEX1 / APE1 Mouse anti-Human Monoclonal (2104) Antibody - LS-B4785 - LSBio

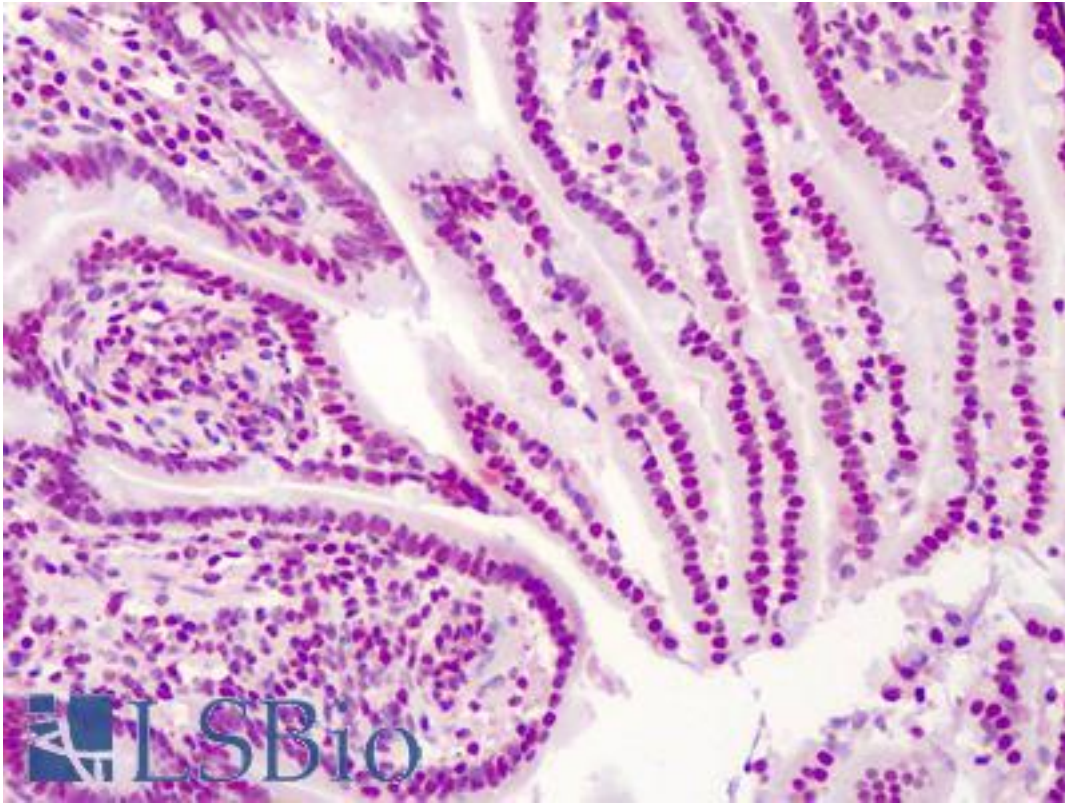
CatalogID:	LS-B4785
Validation:	This antibody replaces catalog number LS-C19951. It has been validated for use in the following assays: IHC-P.
Target:	APEX nuclease (multifunctional DNA repair enzyme) 1 (APEX1)
Synonyms:	APEX1 Antibody, AP endonuclease class I Antibody, AP lyase Antibody, APE Antibody, APE-1 Antibody, APEN Antibody, APE1 Antibody, APEX nuclease Antibody, Redox factor-1 Antibody, AP endonuclease 1 Antibody, APEX Antibody, APX Antibody, Protein REF-1 Antibody, REF-1 Antibody, REF1 Antibody
Host	APEX1 antibody was produced in Mouse
Clonality:	Monoclonal
Isotype:	IgG
Clone Name:	2104
Immunogen Species:	APEX1 / APE1 antibody was raised against Human
Specificity:	Full length human APE1 purified from E. coli.
Reactivity:	Human
Purification:	Protein G purified
Presentation:	PBS, pH 7.2. Preservative free.
Recommended Storage:	Store at -20°C or lower. Aliquot to avoid repeated freezing and thawing.
Uses:	IHC - Paraffin (20 µg/ml), Western blot, ELISA (Optimal dilution to be determined by the researcher)
Size:	50 µg
Concentration:	1 mg/ml

Immunohistochemistry Image:



Anti-APEX1 / APE1 antibody IHC of human skin. Immunohistochemistry of formalin-fixed, paraffin-embedded tissue after heat-induced antigen retrieval. Antibody LS-B4785 concentration 20 ug/ml.

Immunohistochemistry Image:



Anti-APEX1 / APE1 antibody IHC of human small intestine. Immunohistochemistry of formalin-fixed, paraffin-embedded tissue after heat-induced antigen retrieval. Antibody LS-B4785 concentration 20 ug/ml.

Requested From:

Japan

Laboratory Reagent For In Vitro Research Use Only

Not for resale without prior written consent from LifeSpan BioSciences, Inc.

Created on 9/23/2014

© 2014 LifeSpan BioSciences