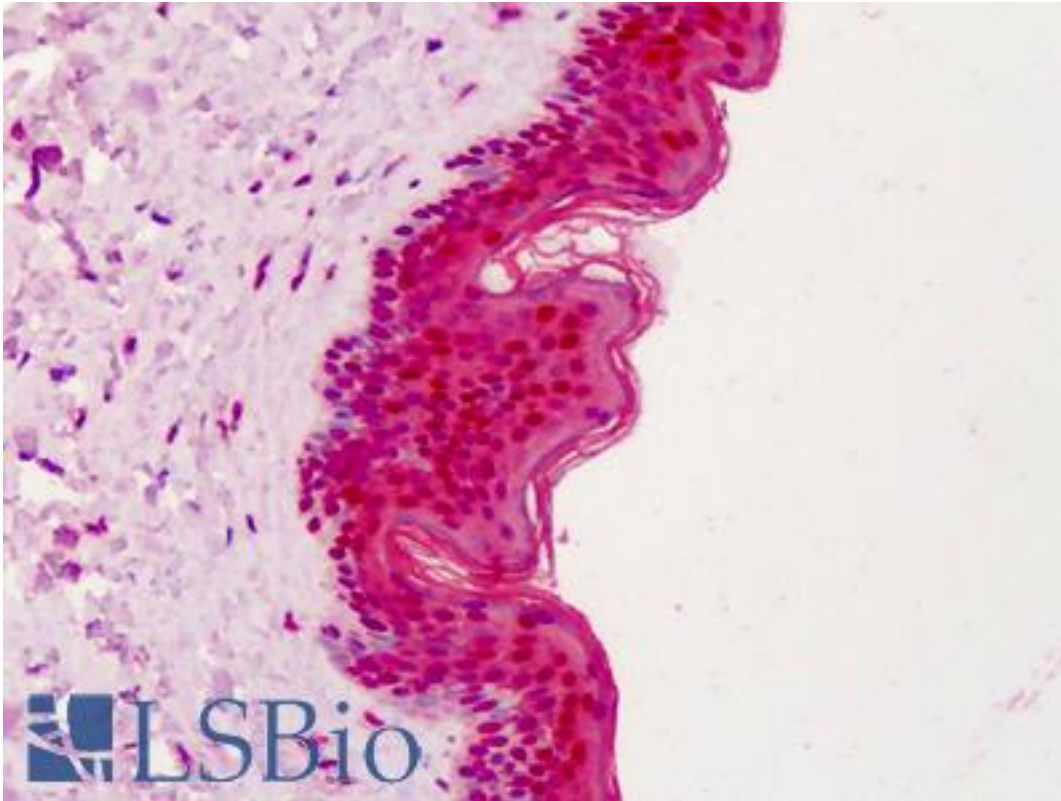


**APEX1 / APE1 Rabbit anti-Human Polyclonal Antibody - LS-B4784 - LSBio**

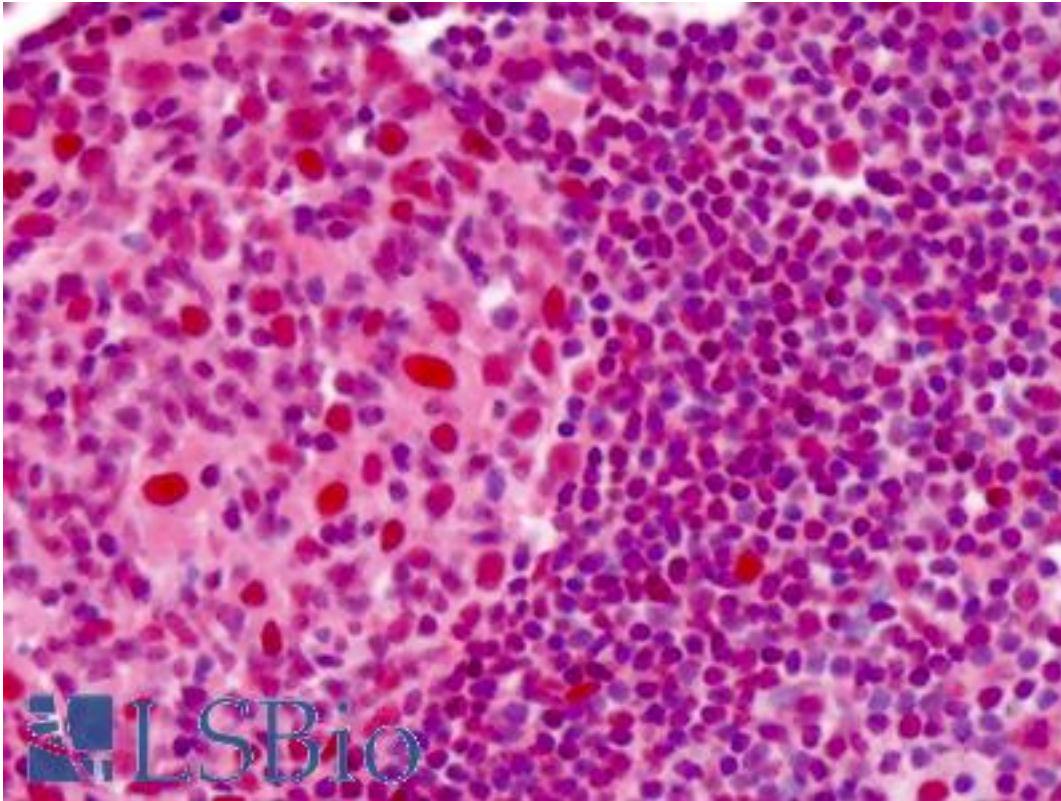
<b>CatalogID:</b>	LS-B4784
<b>Validation:</b>	This antibody replaces catalog number LS-C19949. It has been validated for use in the following assays: IHC-P.
<b>Target:</b>	APEX nuclease (multifunctional DNA repair enzyme) 1 (APEX1)
<b>Synonyms:</b>	APEX1 Antibody, AP endonuclease class I Antibody, AP lyase Antibody, APE Antibody, APE-1 Antibody, APEN Antibody, APE1 Antibody, APEX nuclease Antibody, Redox factor-1 Antibody, AP endonuclease 1 Antibody, APEX Antibody, APX Antibody, Protein REF-1 Antibody, REF-1 Antibody, REF1 Antibody
<b>Host</b>	APEX1 antibody was produced in Rabbit
<b>Clonality:</b>	Polyclonal
<b>Isotype:</b>	IgG
<b>Immunogen Species:</b>	APEX1 / APE1 antibody was raised against Human
<b>Specificity:</b>	Full length human APE1 purified from E. coli.
<b>Reactivity:</b>	Human
<b>Presentation:</b>	Antiserum, no preservative
<b>Recommended Storage:</b>	Store at -20°C or lower. Aliquot to avoid repeated freezing and thawing.
<b>Uses:</b>	IHC - Paraffin (1:100), Western blot (Optimal dilution to be determined by the researcher)
<b>Size:</b>	50 µl

**Immunohistochemistry Image:**



Anti-APEX1 / APE1 antibody IHC of human skin. Immunohistochemistry of formalin-fixed, paraffin-embedded tissue after heat-induced antigen retrieval. Antibody LS-B4784 dilution 1:100.

**Immunohistochemistry Image:**



Anti-APEX1 / APE1 antibody IHC of human tonsil. Immunohistochemistry of formalin-fixed, paraffin-embedded tissue after heat-induced antigen retrieval. Antibody LS-B4784 dilution 1:100.

**Requested From:**

Japan

Laboratory Reagent For In Vitro Research Use Only

Not for resale without prior written consent from LifeSpan BioSciences, Inc.

Created on 9/23/2014

© 2014 LifeSpan BioSciences