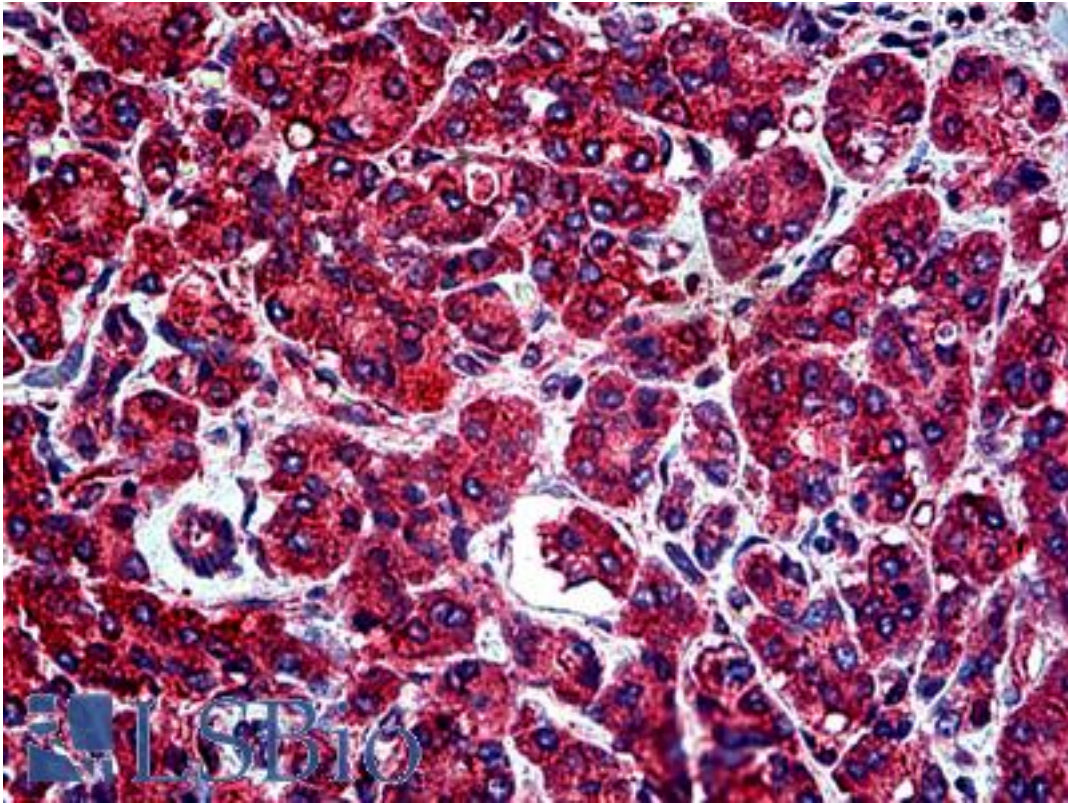


Alpha Tubulin Rabbit anti-Human Polyclonal (aa426-450) Antibody - LS-B4778 - LSBio

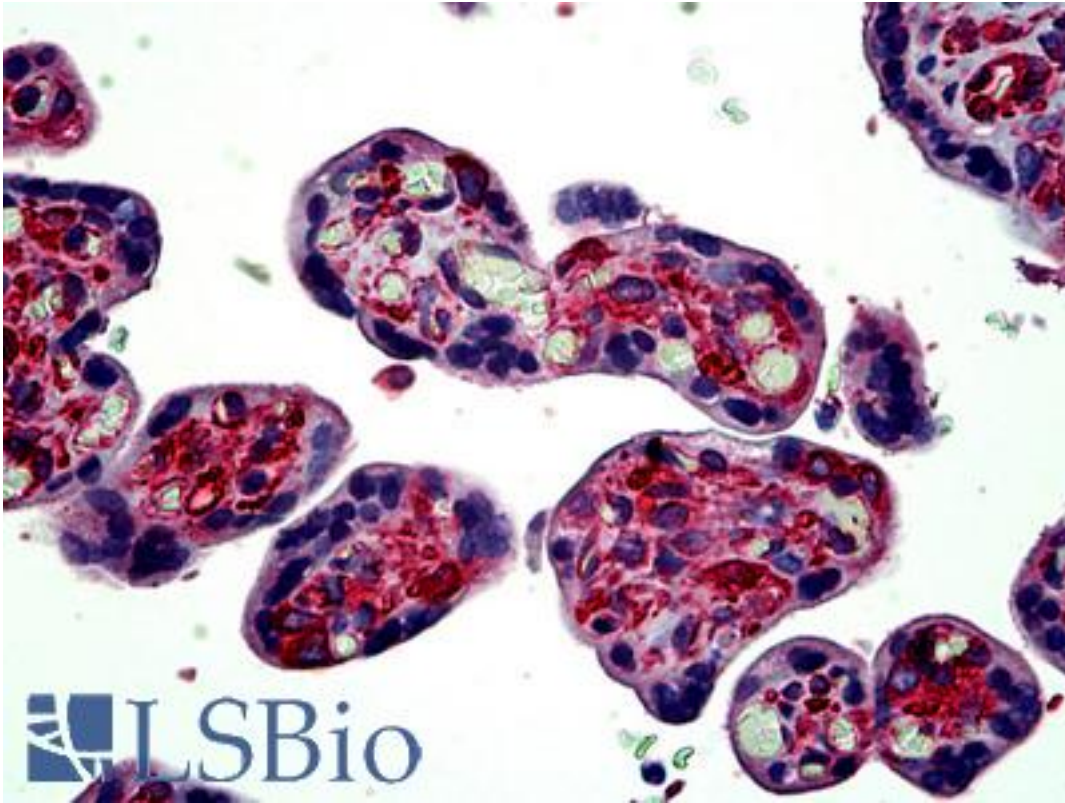
<b>CatalogID:</b>	LS-B4778
<b>Validation:</b>	This antibody replaces catalog number LS-C50678. It has been validated for use in the following assays: IHC-P.
<b>Target:</b>	Tubulin Alpha
<b>Host</b>	Tubulin Alpha antibody was produced in Rabbit
<b>Clonality:</b>	Polyclonal
<b>Immunogen Species:</b>	Alpha Tubulin antibody was raised against Human
<b>Antigen Type:</b>	Synthetic peptide
<b>Immunogen:</b>	Alpha Tubulin antibody was raised against a synthetic peptide from aa 426-450 of human tubulin alpha.
<b>Epitope:</b>	aa426-450
<b>Reactivity:</b>	Human, Mouse, Rat, Bovine, Guinea pig, Pig, Chicken, Frog, Gerbil
<b>Purification:</b>	Immunoaffinity purified
<b>Presentation:</b>	10mM PBS/1% BSA buffer pH 7.4 with 0.1% sodium azide
<b>Recommended Storage:</b>	Long term: -20°C; Short term: +4°C. Avoid repeat freeze-thaw cycles.
<b>Uses:</b>	IHC - Paraffin (1:100) (Optimal dilution to be determined by the researcher)
<b>Size:</b>	250 µl

**Immunohistochemistry Image:**



Anti-TUBA1 / Tubulin Alpha 1 antibody IHC of human pancreas. Immunohistochemistry of formalin-fixed, paraffin-embedded tissue after heat-induced antigen retrieval. Antibody LS-B4778 dilution 1:100.

**Immunohistochemistry Image:**



Anti-TUBA1 / Tubulin Alpha 1 antibody IHC of human placenta. Immunohistochemistry of formalin-fixed, paraffin-embedded tissue after heat-induced antigen retrieval. Antibody LS-B4778 dilution 1:100.

**Requested From:**

Japan

Laboratory Reagent For In Vitro Research Use Only

Not for resale without prior written consent from LifeSpan BioSciences, Inc.

Created on 9/23/2014

© 2014 LifeSpan BioSciences