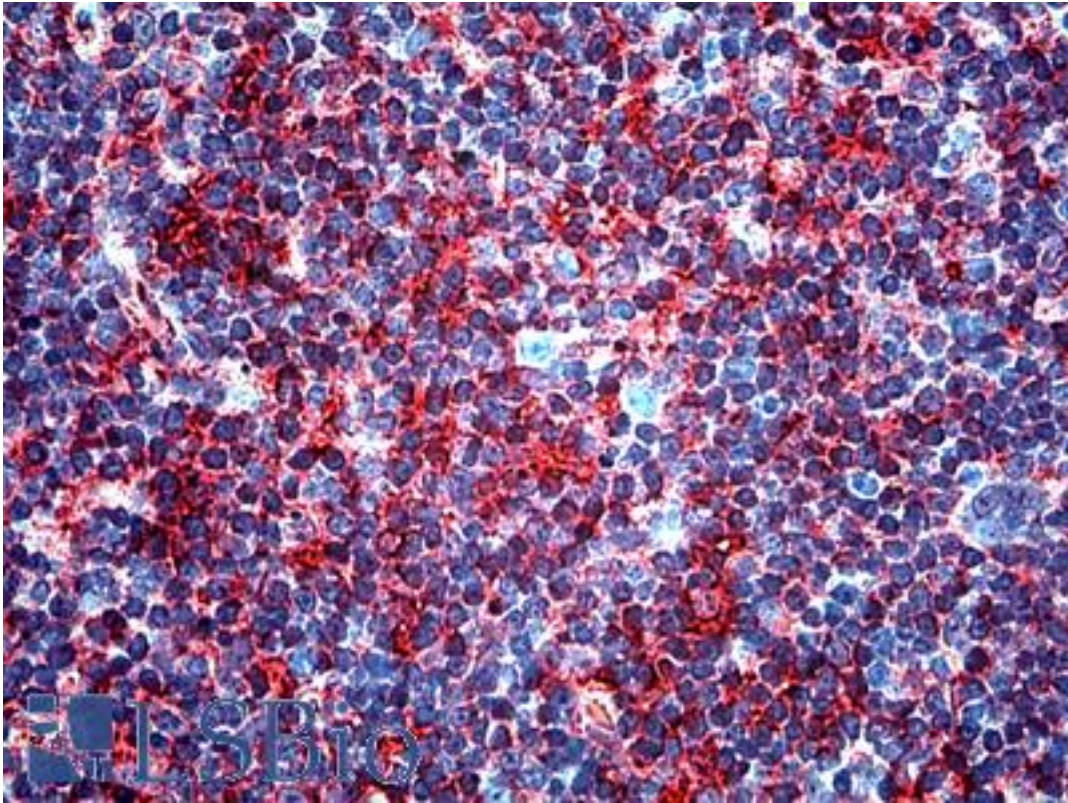


TGF-Beta Mouse anti-Human Monoclonal (TB21) Antibody - LS-B4772 - LSBio

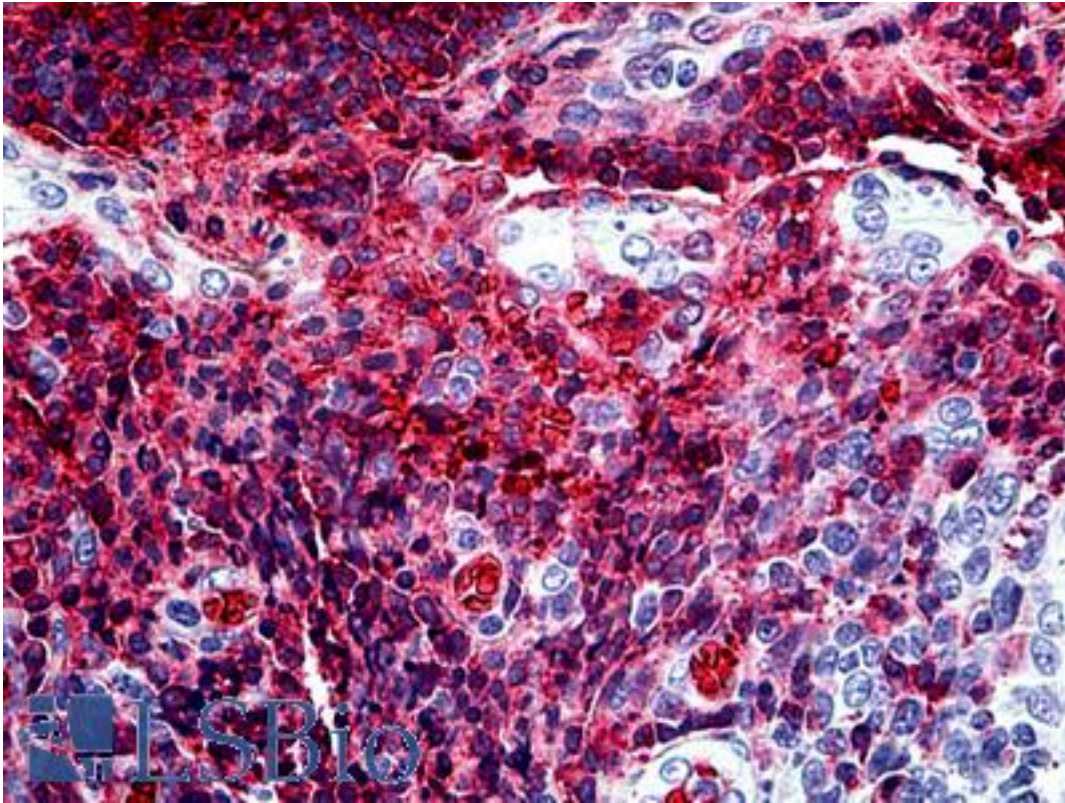
CatalogID:	LS-B4772
Validation:	This antibody replaces catalog number LS-C18188. It has been validated for use in the following assays: IHC-P.
Target:	TGFB / TGF Beta / Transforming Growth Factor Beta
Host	TGFB / TGF Beta / Transforming Growth Factor Beta antibody was produced in Mouse
Clonality:	Monoclonal
Isotype:	IgG1,k
Clone Name:	TB21
Immunogen Species:	TGF-Beta antibody was raised against Human
Antigen Type:	Purified protein
Immunogen:	TGF-Beta antibody was raised against tGF-b from human platelets.
Specificity:	Recognizes both human platelet-derived and recombinant TGF-beta.
Reactivity:	Human
Purification:	Protein G purified
Presentation:	PBS, pH 7.0.
Recommended Storage:	Short term 4°C, long term aliquot and store at -20°C, avoid freeze thaw cycles.
Usage Summary:	Suitable for use in Western Blot, ELISA, Neutralization and Immunohistochemistry. Neutralization: Neutralizes TGF-beta activity in vitro in an inhibition assay of CCL/64 cell growth and the growth promoting action of TGF-beta in the NRK-49F colony forming assay. The effect of microinjection of this antibody into one blastomere of two cell stage Xenopus embryos indicated that it was able to neutralize effectively the bioactivity of TGF-beta in vivo. Immunohistochemistry (formalin-fixed, paraffin-embedded, frozen): 1:1000. Has been used to demonstrate TGF-beta in ovine ovarian tissue and human breast carcinoma. As a consequence of the intense staining of the erythrocytes it is possible to locate a single cell within the ovarian stroma making it useful in locating very fine capillary networks within tissue. Western Blot: 5-20 ng/ml will allow visualization of 100 ng/lane of TGF-beta. Recognizes the dimeric (25kD) and monomeric (12.5kD) forms of TGF-beta under both non-reducing and reducing conditions respectively.
Uses:	IHC - Paraffin (10 µg/ml), IHC - Frozen, Western blot, ELISA, Functional Assay, Neutralization (Optimal dilution to be determined by the researcher)
Size:	50 µg
Concentration:	1 mg/ml

Immunohistochemistry Image:



Anti-TGF-Beta antibody IHC of human thymus. Immunohistochemistry of formalin-fixed, paraffin-embedded tissue after heat-induced antigen retrieval. Antibody LS-B4772 concentration 10 ug/ml.

Immunohistochemistry Image:



Anti-TGF-Beta antibody IHC of human tonsil. Immunohistochemistry of formalin-fixed, paraffin-embedded tissue after heat-induced antigen retrieval. Antibody LS-B4772 concentration 10 ug/ml.

Requested From:

Japan

Laboratory Reagent For In Vitro Research Use Only

Not for resale without prior written consent from LifeSpan BioSciences, Inc.

Created on 9/23/2014

© 2014 LifeSpan BioSciences