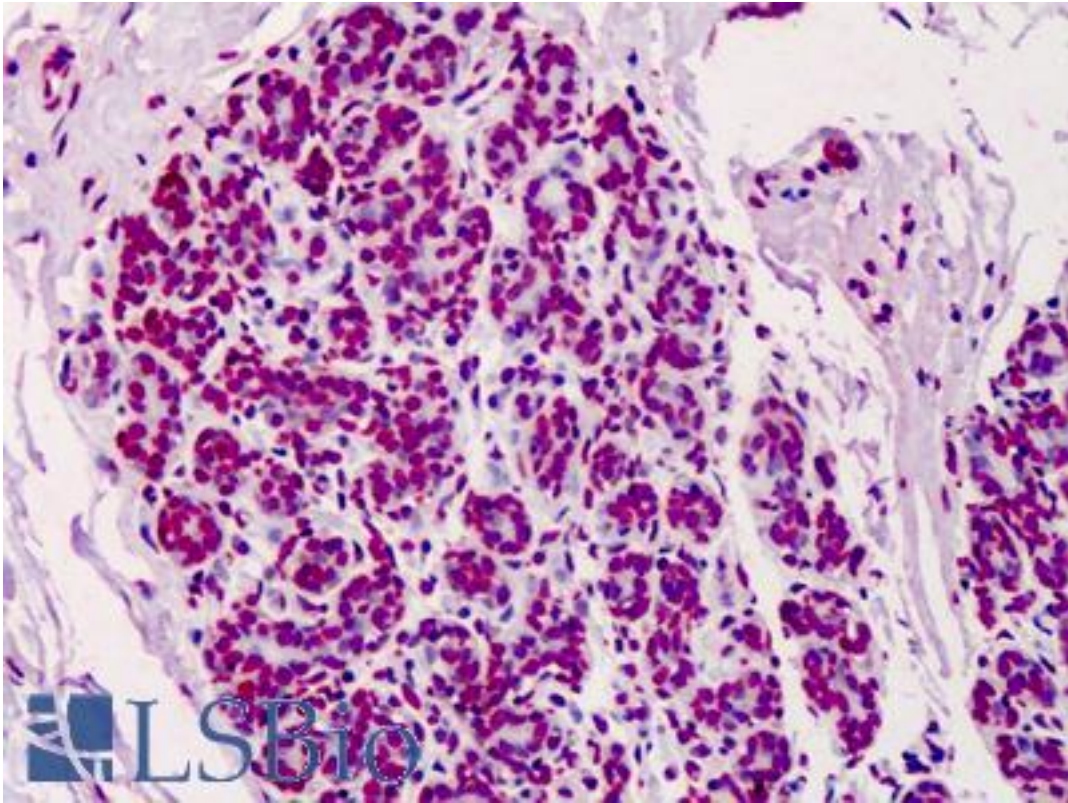


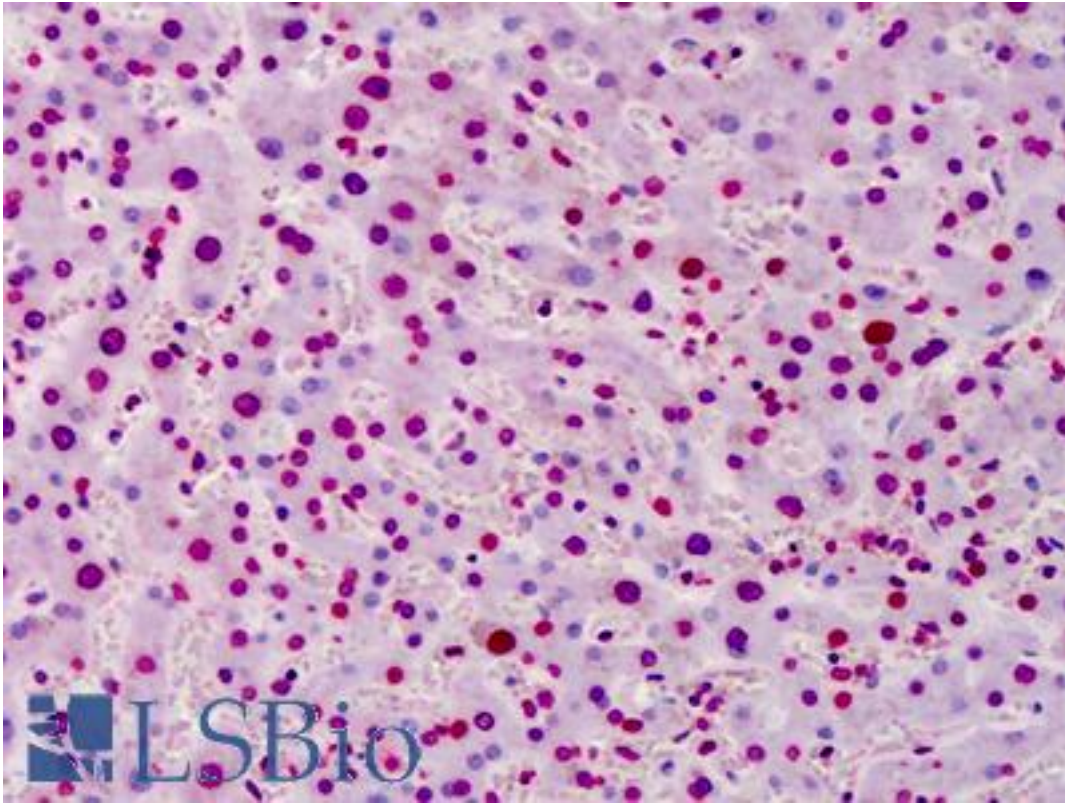
PAR / Poly ADP-Ribose Mouse Monoclonal Antibody - LS-B4771 - LSBio	
<b>CatalogID:</b>	LS-B4771
<b>Validation:</b>	This antibody replaces catalog number LS-C74154. It has been validated for use in the following assays: IHC-P.
<b>Target:</b>	PAR / Poly ADP-Ribose
<b>Host</b>	Mouse
<b>Clonality:</b>	Monoclonal
<b>Isotype:</b>	IgG3
<b>Antigen Type:</b>	Hapten
<b>Immunogen:</b>	Purified poly (ADP-ribose).
<b>Specificity:</b>	Recognizes poly (ADP-ribose) synthesized by a broad range of PARPs (poly (ADP-ribose) polymerases) like human, mouse, rat or Drosophila PARP enzyme.
<b>Purification:</b>	Protein A purified
<b>Presentation:</b>	50 mM HEPES, pH 7.4, 100 mM sodium chloride, 1% BSA, 0.02% sodium azide.
<b>Recommended Storage:</b>	Short term 4°C, long term aliquot and store at -20°C, avoid freeze thaw cycles.
<b>Usage Summary:</b>	Suitable for use in Immunocytochemistry, Immunohistochemistry, and Western Blot. Recommend Dilution: Immunocytochemistry: 5-20 ug/ml. Western Blot: Incubate 2.5 ug/ml in PBS, 0.05% Tween20, 5% non-fat dried milk.
<b>Uses:</b>	IHC - Paraffin (5 - 10 µg/ml), ICC (5 - 20 µg/ml), Western blot (Optimal dilution to be determined by the researcher)
<b>Size:</b>	50 µl
<b>Concentration:</b>	1 mg/ml

**Immunohistochemistry Image:**



Anti-Poly ADP-Ribose antibody IHC of human breast. Immunohistochemistry of formalin-fixed, paraffin-embedded tissue after heat-induced antigen retrieval. Antibody LS-B4771 concentration 5 ug/ml.

**Immunohistochemistry Image:**



Anti-Poly ADP-Ribose antibody IHC of human liver. Immunohistochemistry of formalin-fixed, paraffin-embedded tissue after heat-induced antigen retrieval. Antibody LS-B4771 concentration 5 ug/ml.

**Requested From:**

Japan

Laboratory Reagent For In Vitro Research Use Only

Not for resale without prior written consent from LifeSpan BioSciences, Inc.

Created on 9/23/2014

© 2014 LifeSpan BioSciences