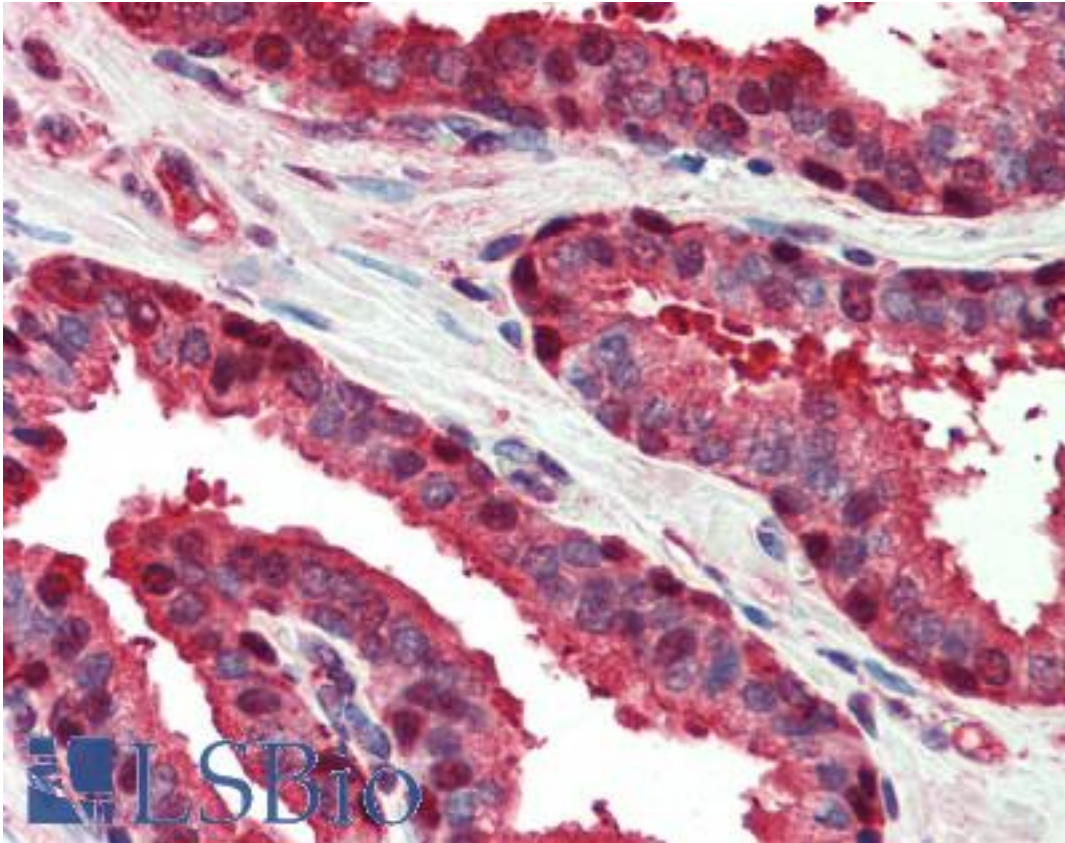


CASP6 / Caspase 6 Rabbit anti-Human Polyclonal (Internal) Antibody - LS-B477 - LSBio

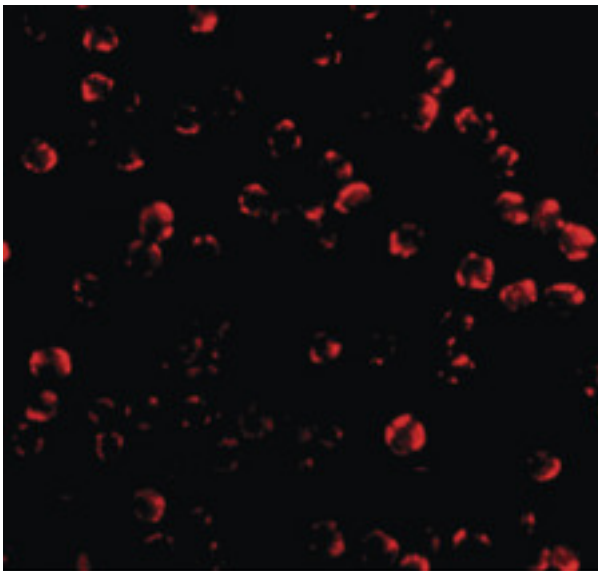
CatalogID:	LS-B477
Validation:	This antibody replaces catalog number LS-C19499. It has been validated for use in the following assays: IHC.
Target:	caspase 6, apoptosis-related cysteine peptidase (CASP6)
Synonyms:	CASP6 Antibody, Apoptotic protease Mch-2 Antibody, Caspase 6 Antibody, CASP-6 Antibody, Caspase-6 Antibody, Mch-2 Antibody, MCH2 Antibody
Family / Subfamily:	Protease / Cysteine C14
Host	CASP6 antibody was produced in Rabbit
Clonality:	Polyclonal
Immunogen Species:	CASP6 / Caspase 6 antibody was raised against Human
Antigen Type:	Synthetic peptide
Immunogen:	CASP6 / Caspase 6 antibody was raised against synthetic peptide from human CASP6 / Caspase 6.
Specificity:	15 amino acid peptide from near the center of human Caspase-6
Epitope:	Internal
Reactivity:	Human
Non-Reactivity:	Mouse, Rat
Purification:	Immunoaffinity purified
Presentation:	PBS, 0.02% sodium azide.
Recommended Storage:	Short term 4°C, long term aliquot and store at -20°C, avoid freeze thaw cycles. Store undiluted.
Usage Summary:	Immunohistochemistry: LS-B477 was validated for use in immunohistochemistry on a panel of 21 formalin-fixed, paraffin-embedded (FFPE) human tissues after heat induced antigen retrieval in pH 6.0 citrate buffer. After incubation with the primary antibody, slides were incubated with biotinylated secondary antibody, followed by alkaline phosphatase-streptavidin and chromogen. The stained slides were evaluated by a pathologist to confirm staining specificity. The optimal working concentration for LS-B477 was determined to be 2.5 ug/ml.
Uses:	IHC - Paraffin (2.5 µg/ml), ICC, Western blot (1 µg/ml) (Optimal dilution to be determined by the researcher)
Size:	50 µg
Concentration:	1 mg/ml

Immunohistochemistry Image:



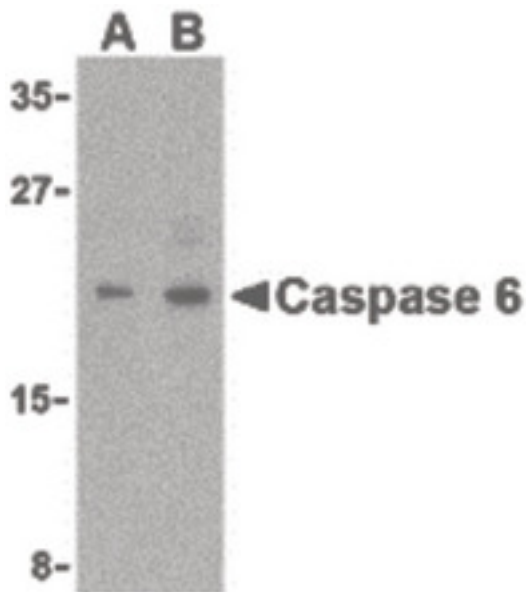
Anti-Caspase 6 antibody IHC of human prostate. Immunohistochemistry of formalin-fixed, paraffin-embedded tissue after heat-induced antigen retrieval. Antibody LS-B477 concentration 5 ug/ml.

Immunofluorescence Image:



Immunofluorescence of Caspase 6 in MCF7 cells with Caspase 6 antibody at 10 ug/ml.

Western Blot Image:



Western blot of Caspase-6 in MCF7 cell lysate with Caspase-6 antibody (IN) at (A) 1 and (B) 2 ug/ml.

Requested From:

Japan

Laboratory Reagent For In Vitro Research Use Only

Not for resale without prior written consent from LifeSpan BioSciences, Inc.

Created on 9/23/2014

© 2014 LifeSpan BioSciences