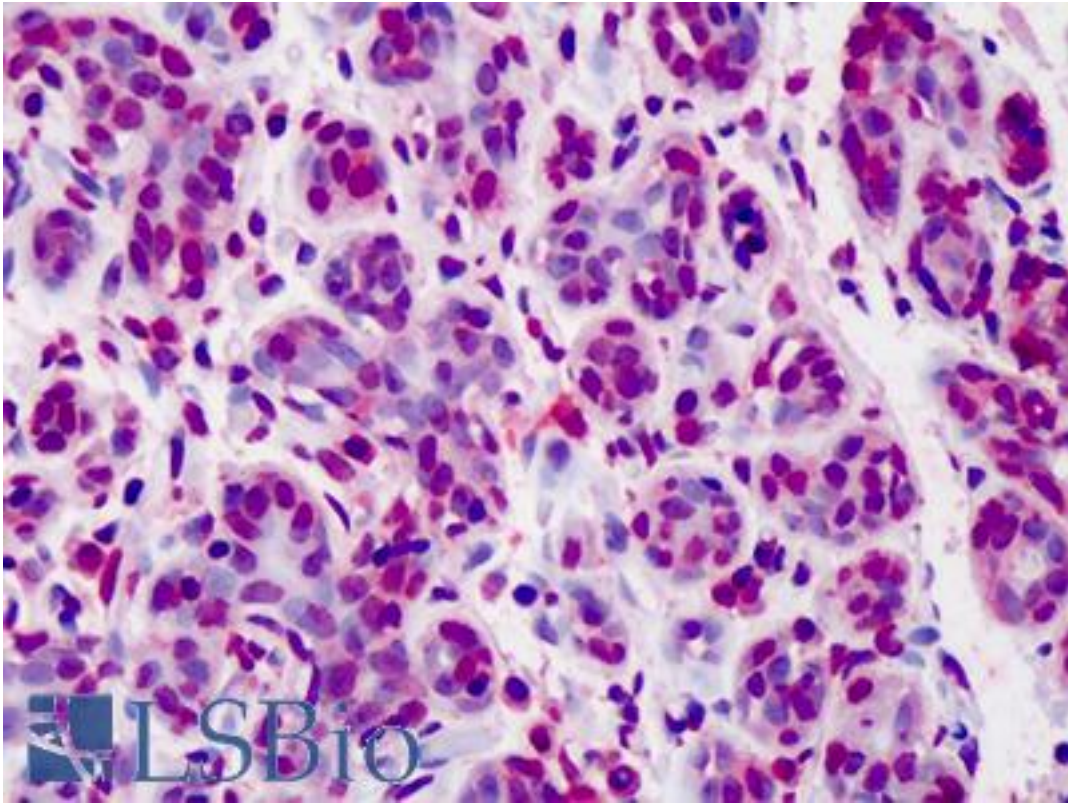


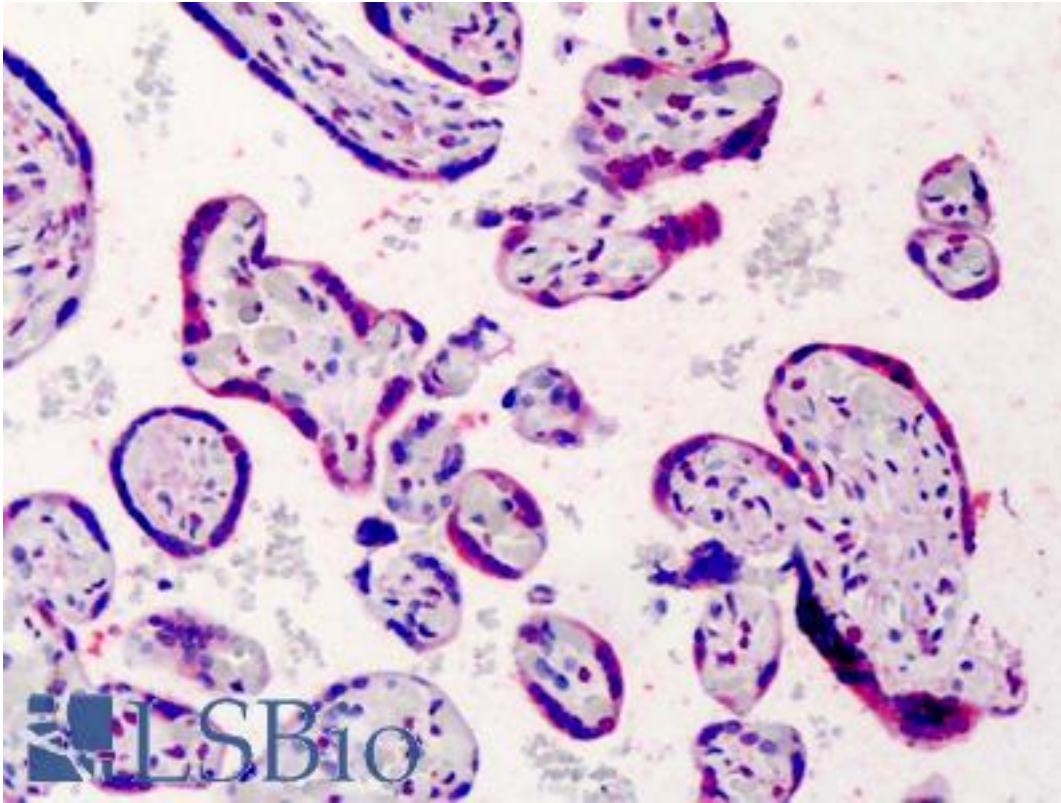
BCL2 / Bcl-2 Mouse anti-Human Monoclonal (FITC) (Bcl-2/100) Antibody - LS-B4769 - LSBio	
CatalogID:	LS-B4769
Validation:	This antibody replaces catalog number LS-C35119. It has been validated for use in the following assays: IHC-P.
Target:	B-cell CLL/lymphoma 2 (BCL2)
Synonyms:	BCL2 Antibody, Apoptosis regulator Bcl-2 Antibody, B-cell CLL/lymphoma 2 Antibody, B-cell lymphoma protein 2 Antibody, Bcl-2 Antibody, PPP1R50 Antibody
Family / Subfamily:	Apoptosis
Host	BCL2 antibody was produced in Mouse
Clonality:	Monoclonal
Isotype:	IgG1
Clone Name:	Bcl-2/100
Conjugations:	Fluorescein (FITC)
Immunogen Species:	BCL2 / Bcl-2 antibody was raised against Human
Immunogen:	BCL2 / Bcl-2 antibody was raised against human bcl-2 peptide 41-54.
Specificity:	Recognizes the intracellular 26kD bcl-2 protein.
Reactivity:	Human
Purification:	Protein A purified
Presentation:	PBS, pH 7.2, 5% glycerol, 0.2% BSA, 0.04% sodium azide.
Recommended Storage:	Short term 4°C, long term aliquot and store at -20°C, avoid freeze thaw cycles.
Usage Summary:	
Uses:	IHC - Paraffin (1:50), Flow Cytometry (Optimal dilution to be determined by the researcher)
Size:	60 tst

Immunohistochemistry Image:



Anti-BCL2 / Bcl-2 antibody IHC of human breast. Immunohistochemistry of formalin-fixed, paraffin-embedded tissue after heat-induced antigen retrieval. Antibody LS-B4769 dilution 1:50.

Immunohistochemistry Image:



Anti-BCL2 / Bcl-2 antibody IHC of human placenta. Immunohistochemistry of formalin-fixed, paraffin-embedded tissue after heat-induced antigen retrieval. Antibody LS-B4769 dilution 1:50.

Requested From:

Japan

Laboratory Reagent For In Vitro Research Use Only

Not for resale without prior written consent from LifeSpan BioSciences, Inc.

Created on 9/23/2014

© 2014 LifeSpan BioSciences