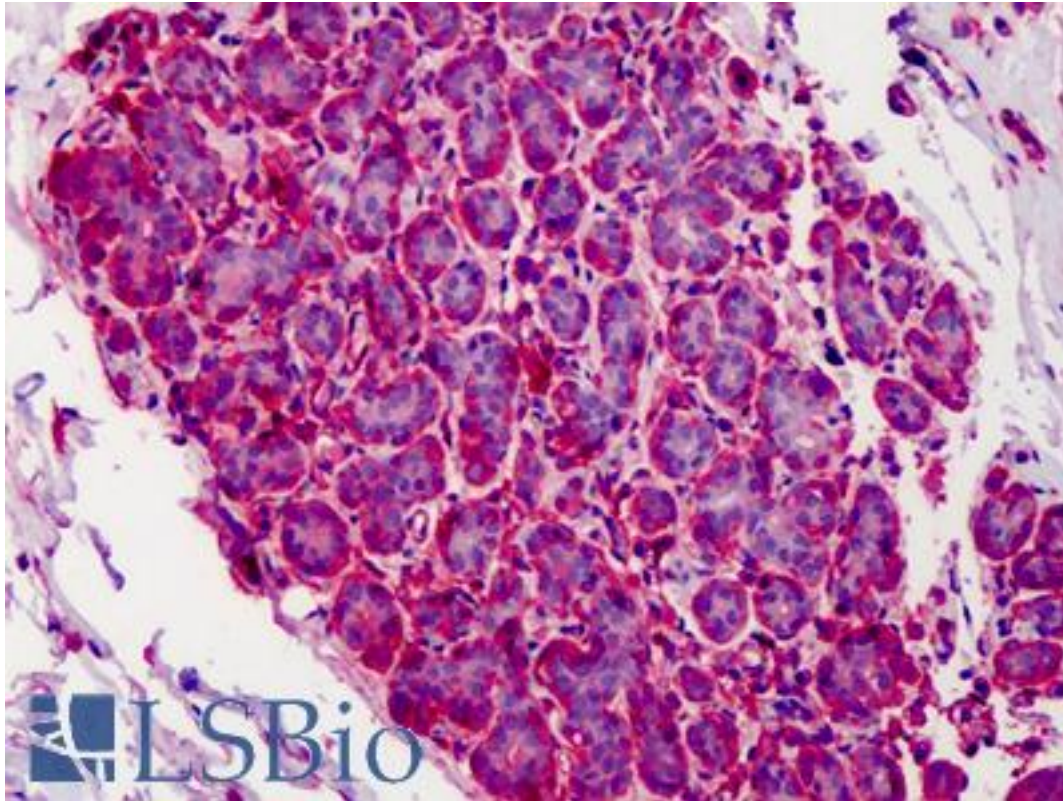


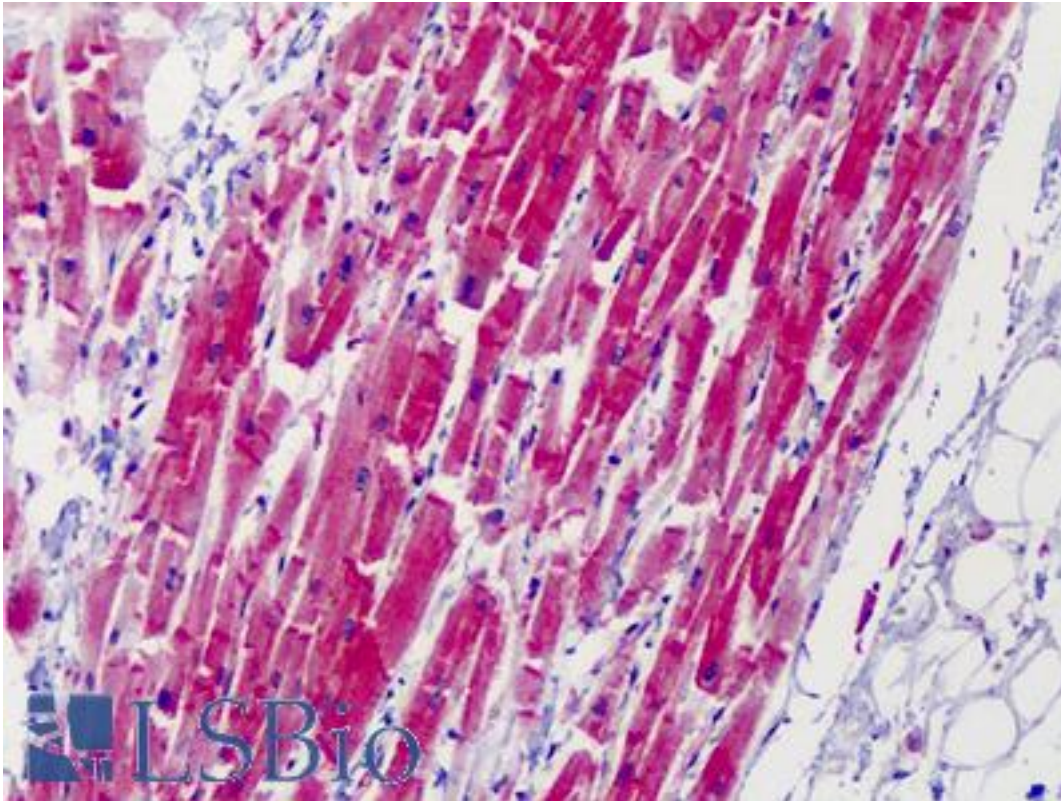
CAPN1 / Calpain 1 Mouse Monoclonal (15C10) Antibody - LS-B4768 - LSBio	
CatalogID:	LS-B4768
Validation:	This antibody replaces catalog number LS-C26574. It has been validated for use in the following assays: IHC-P.
Target:	calpain 1, (mu/l) large subunit (CAPN1)
Synonyms:	CAPN1 Antibody, Calpain i Antibody, Calpain mu-type Antibody, Calpain, large polypeptide L1 Antibody, Calpain-1 catalytic subunit Antibody, Calpain 1 Antibody, Calpain-1 large subunit Antibody, CANP Antibody, CANP1 Antibody, Mu CANP Antibody, Mu-calpain Antibody, Mu-type calpain Antibody, MuCANP Antibody, Micromolar-calpain Antibody, MuCL Antibody, CANP 1 Antibody, CANPL1 Antibody
Family / Subfamily:	Protease / Cysteine C2
Host	CAPN1 antibody was produced in Mouse
Clonality:	Monoclonal
Isotype:	IgG1
Clone Name:	15C10
Antigen Type:	Purified protein
Immunogen:	CAPN1 / Calpain 1 antibody was raised against calpain purified from human placenta.
Reactivity:	Human, Mouse, Rat, Bovine
Purification:	Protein A/G purified
Presentation:	0.02M sodium phosphate, pH 7.5, 0.15M sodium chloride, 50% glycerol, 3mM sodium azide. Sourced in TCS.
Recommended Storage:	Aliquot and store at -20°C. Minimize freezing and thawing.
Uses:	IHC - Paraffin (5 - 10 µg/ml), Western blot, Immunoprecipitation, ELISA (Optimal dilution to be determined by the researcher)
Size:	50 µg
Concentration:	1 mg/ml

Immunohistochemistry Image:



Anti-CAPN1 / Calpain 1 antibody IHC of human breast. Immunohistochemistry of formalin-fixed, paraffin-embedded tissue after heat-induced antigen retrieval. Antibody LS-B4768 concentration 5 ug/ml.

Immunohistochemistry Image:



Anti-CAPN1 / Calpain 1 antibody IHC of human heart. Immunohistochemistry of formalin-fixed, paraffin-embedded tissue after heat-induced antigen retrieval. Antibody LS-B4768 concentration 5 ug/ml.

Requested From:

Japan

Laboratory Reagent For In Vitro Research Use Only

Not for resale without prior written consent from LifeSpan BioSciences, Inc.

Created on 9/23/2014

© 2014 LifeSpan BioSciences