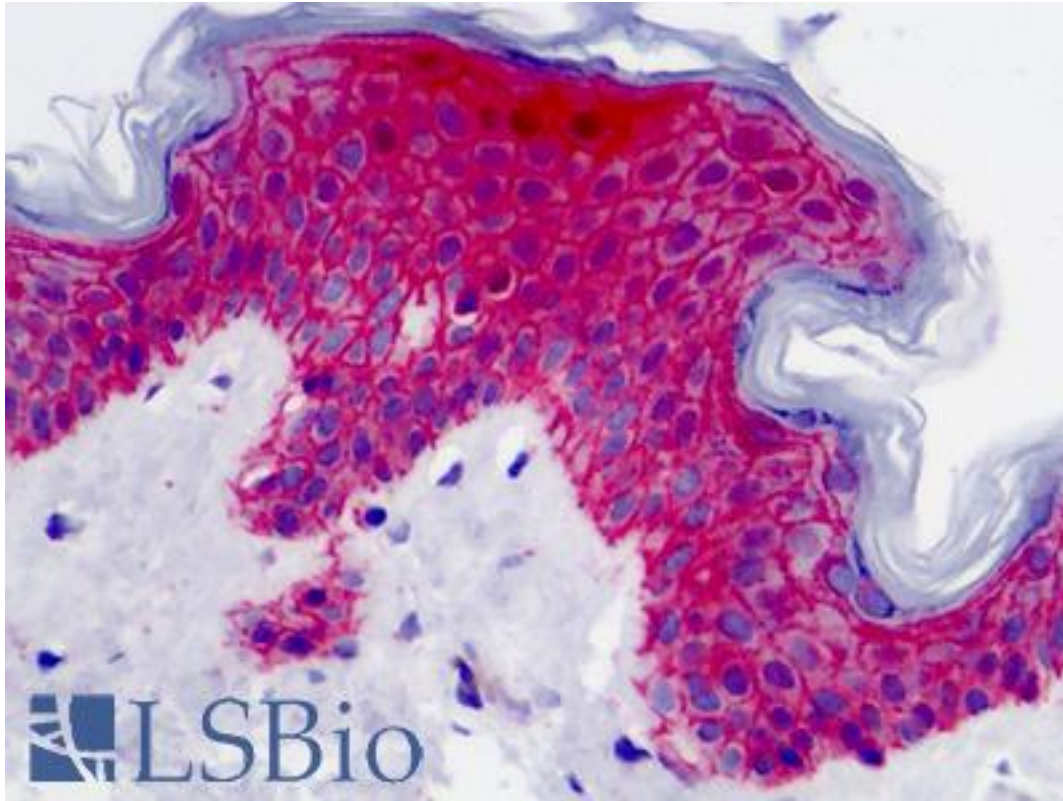


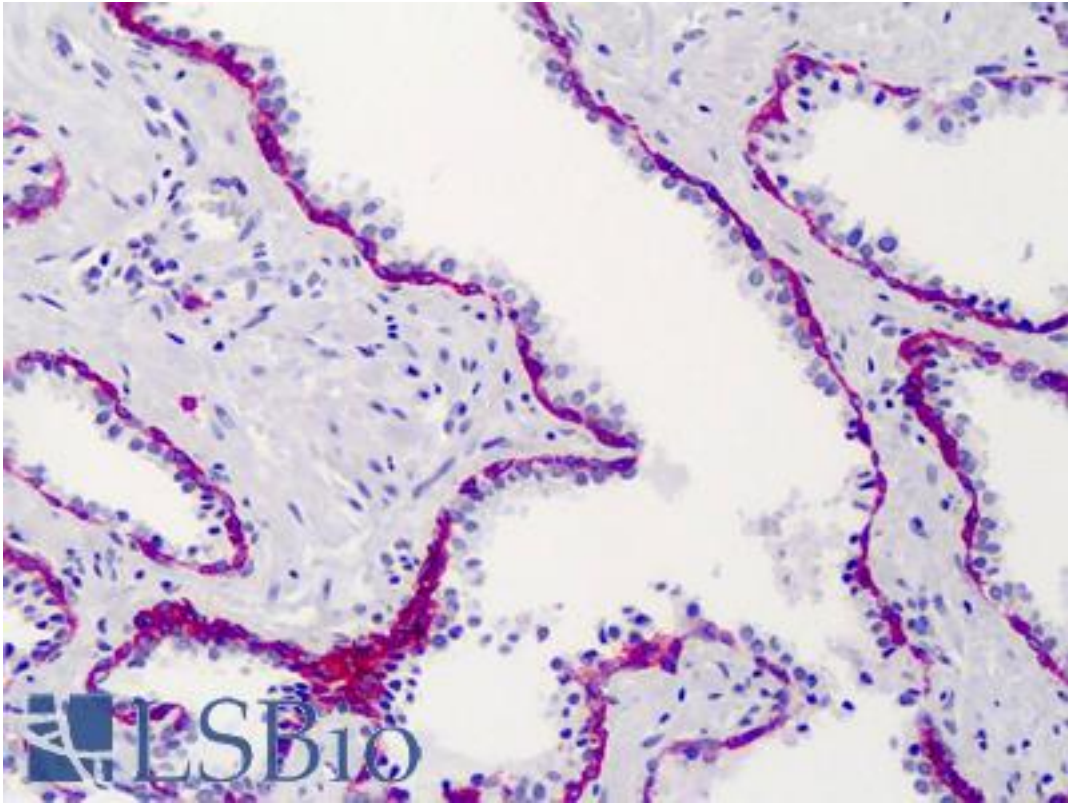
| SDC1 / Syndecan 1 / CD138 Mouse anti-Human Monoclonal Antibody - LS-B4762 - LSBio | |
|---|--|
| CatalogID: | LS-B4762 |
| Validation: | This antibody replaces catalog number LS-C14247. It has been validated for use in the following assays: IHC-P. |
| Target: | syndecan 1 (SDC1) |
| Synonyms: | SDC1 Antibody, CD138 antigen Antibody, SDC Antibody, SYND1 Antibody, Syndecan Antibody, Syndecan 1 Antibody, Syndecan-1 Antibody, CD138 Antibody, Syndecan proteoglycan 1 Antibody |
| Host | SDC1 antibody was produced in Mouse |
| Clonality: | Monoclonal |
| Isotype: | IgG1 |
| Immunogen Species: | SDC1 / Syndecan 1 / CD138 antibody was raised against Human |
| Antigen Type: | Cells |
| Immunogen: | SDC1 / Syndecan 1 / CD138 antibody was raised against u266 cell line. |
| Specificity: | Recognizes a heparan sulfate rich membrane glycoprotein of 200kD known as Syndecan-1 (CD138). Syndecan functions as a receptor for collagen, fibronectin and thrombospondin. Stains all plasma cells and plasma cell lines. No staining of other leucocytes is seen in peripheral blood or bone marrow, although some ALL cell lines express the antigen weakly. Some staining of epithelial and endothelial cells may be seen in immunohistology. |
| Reactivity: | Human |
| Purification: | Protein G purified |
| Presentation: | PBS, 1% BSA, 0.1% sodium azide |
| Recommended Storage: | Short term 4°C, long term aliquot and store at -20°C, avoid freeze thaw cycles. |
| Usage Summary: | ELISA, Flow Cytometry, Immunohistochemistry. Flow Cytometry: Neat. Use 10 ul of the suggested working dilution to label 1E6 cells in 100ul. |
| Uses: | IHC - Paraffin (1:50 - 1:100), IHC - Frozen, Flow Cytometry, ELISA (Optimal dilution to be determined by the researcher) |
| Size: | 50 µg |

Immunohistochemistry Image:



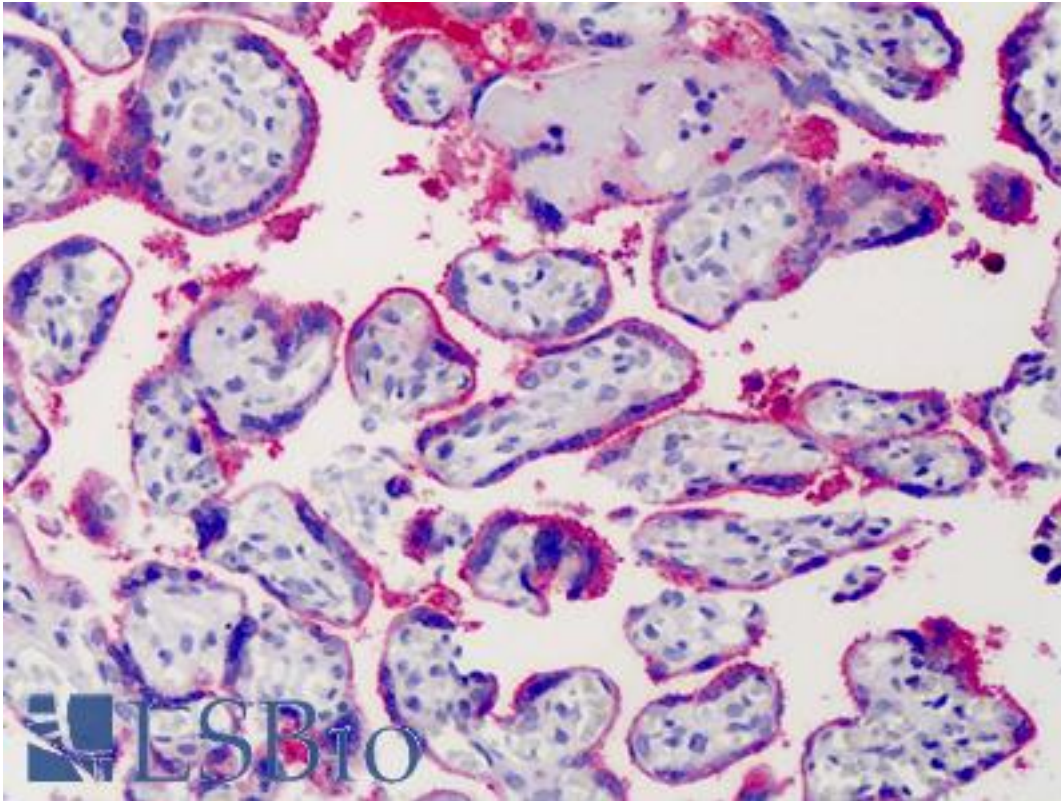
Anti-CD138 antibody IHC of human skin. Immunohistochemistry of formalin-fixed, paraffin-embedded tissue after heat-induced antigen retrieval. Antibody LS-B4762 dilution 1:50.

Immunohistochemistry Image:



Anti-CD138 antibody IHC of human prostate. Immunohistochemistry of formalin-fixed, paraffin-embedded tissue after heat-induced antigen retrieval. Antibody LS-B4762 dilution 1:50.

Immunohistochemistry Image:



Anti-CD138 antibody IHC of human placenta. Immunohistochemistry of formalin-fixed, paraffin-embedded tissue after heat-induced antigen retrieval. Antibody LS-B4762 dilution 1:50.

Requested From:

Japan

Laboratory Reagent For In Vitro Research Use Only

Not for resale without prior written consent from LifeSpan BioSciences, Inc.

Created on 9/23/2014

© 2014 LifeSpan BioSciences