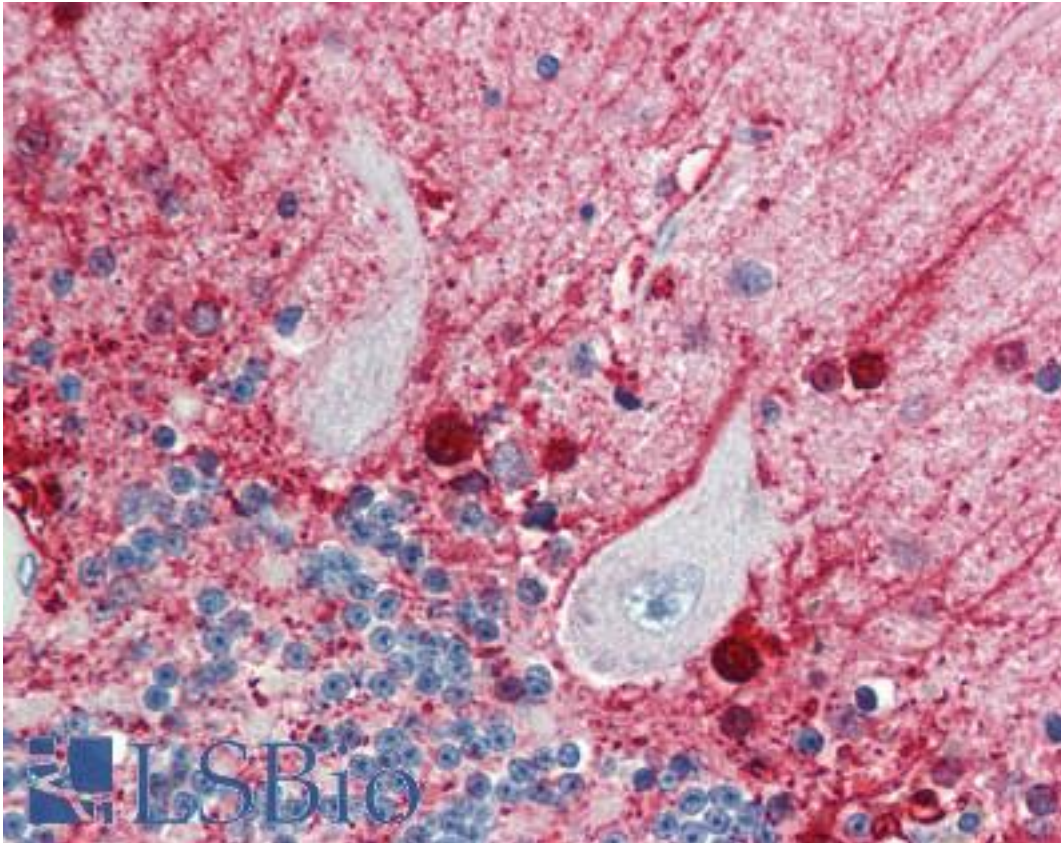


CASP5 / Caspase 5 Rabbit anti-Human Polyclonal Antibody - LS-B476 - LSBio

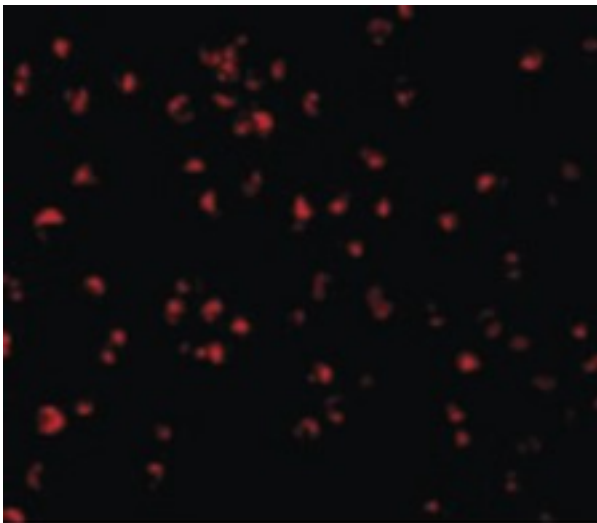
CatalogID:	LS-B476
Validation:	This antibody replaces catalog number LS-C465. It has been validated for use in the following assays: IHC.
Target:	caspase 5, apoptosis-related cysteine peptidase (CASP5)
Synonyms:	CASP5 Antibody, CASP-5 Antibody, Caspase 5 Antibody, Caspase-5 Antibody, ICE(rel)III Antibody, ICEREL-III Antibody, ICE(rel)-III Antibody, Ich-3 Antibody, Protease TY Antibody, ICH3 Antibody, Protease ICH-3 Antibody, TY protease Antibody
Family / Subfamily:	Protease / Cysteine C14
Host	CASP5 antibody was produced in Rabbit
Clonality:	Polyclonal
Immunogen Species:	CASP5 / Caspase 5 antibody was raised against Human
Antigen Type:	Synthetic peptide
Immunogen:	CASP5 / Caspase 5 antibody was raised against synthetic peptide from human CASP5 / Caspase 5.
Specificity:	14 amino acid peptide from the center of human Caspase-5
Reactivity:	Human
Purification:	Immunoaffinity purified
Presentation:	PBS, 0.02% sodium azide.
Recommended Storage:	Short term 4°C, long term aliquot and store at -20°C, avoid freeze thaw cycles. Store undiluted.
Usage Summary:	Immunohistochemistry: LS-B476 was validated for use in immunohistochemistry on a panel of 21 formalin-fixed, paraffin-embedded (FFPE) human tissues after heat induced antigen retrieval in pH 6.0 citrate buffer. After incubation with the primary antibody, slides were incubated with biotinylated secondary antibody, followed by alkaline phosphatase-streptavidin and chromogen. The stained slides were evaluated by a pathologist to confirm staining specificity. The optimal working concentration for LS-B476 was determined to be 5 ug/ml.
Uses:	IHC - Paraffin (5 µg/ml), ICC, Western blot (0.5 - 1 µg/ml) (Optimal dilution to be determined by the researcher)
Size:	50 µg
Concentration:	1 mg/ml

Immunohistochemistry Image:



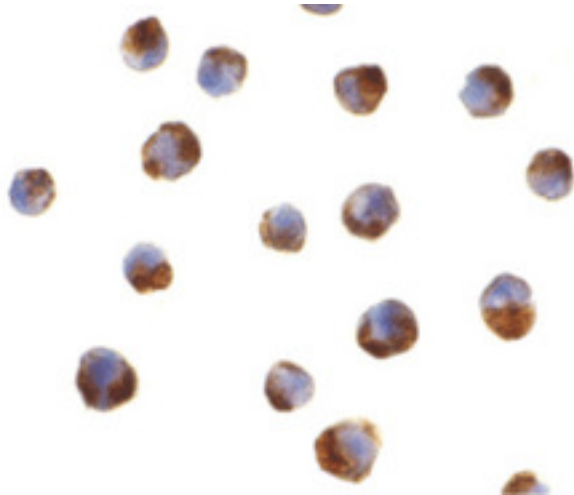
Anti-CASP5 / Caspase 5 antibody IHC of human brain, cerebellum. Immunohistochemistry of formalin-fixed, paraffin-embedded tissue after heat-induced antigen retrieval. Antibody LS-B476 concentration 5 ug/ml.

Immunofluorescence Image:



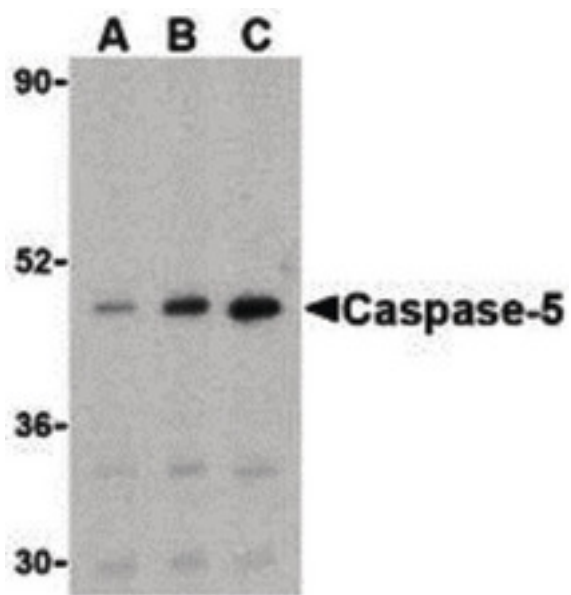
Immunofluorescence of Caspase-5 in P815 cells with Caspase-5 antibody at 2 ug/ml.

Immunocytochemistry Image:



Immunocytochemistry of caspase-5 in P815 cells with caspase-5 antibody at 2 ug/ml.

Western Blot Image:



Western blot of caspase-5 in Ramos cells with caspase-5 antibody at (A) 0.5, (B) 1, and (C) 2 ug/ml.

Requested From:

Japan

Laboratory Reagent For In Vitro Research Use Only

Not for resale without prior written consent from LifeSpan BioSciences, Inc.

Created on 9/23/2014

© 2014 LifeSpan BioSciences