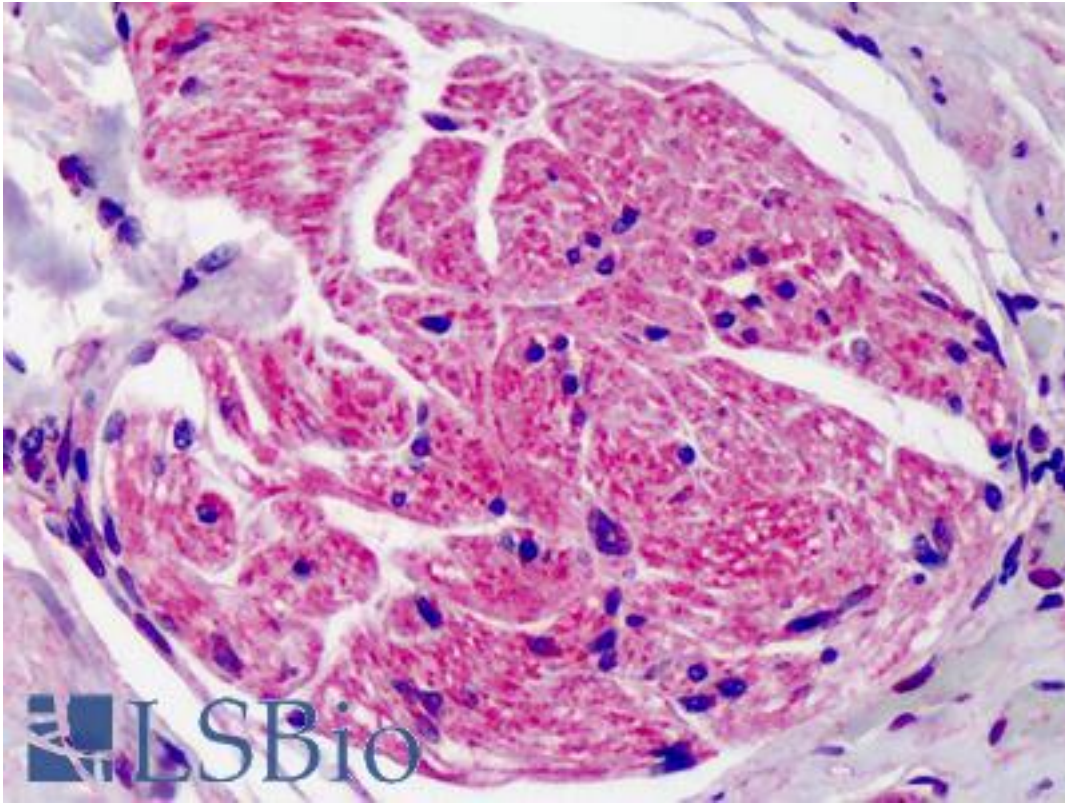


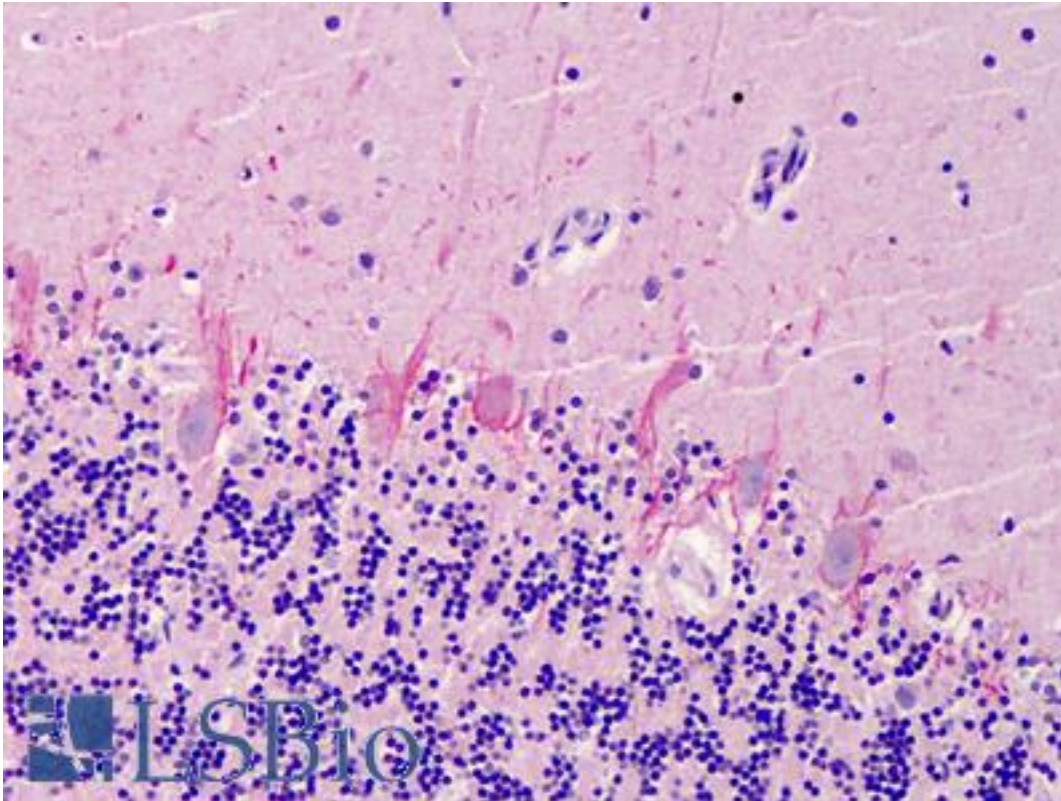
SUMO2 + SUMO3 Rabbit anti-Human Polyclonal (C-Terminus) Antibody - LS-B4753 - LSBio	
CatalogID:	LS-B4753
Validation:	This antibody replaces catalog number LS-C98771. It has been validated for use in the following assays: IHC-P.
Target:	SMT3 Suppressor Of Mif Two 3 Homolog 2/3 (SUMO2/SUMO3)
Host	SMT3 Suppressor Of Mif Two 3 Homolog 2/3 (SUMO2/SUMO3) antibody was produced in Rabbit
Clonality:	Polyclonal
Immunogen Species:	SUMO2 + SUMO3 antibody was raised against Human
Antigen Type:	Synthetic peptide
Immunogen:	SUMO2 + SUMO3 antibody was raised against kLH conjugated synthetic peptide selected within C-terminal region of human SUMO2/3.
Epitope:	C-Terminus
Reactivity:	Human, Mouse
Purification:	Immunoaffinity purified
Presentation:	PBS, 0.09% sodium azide
Recommended Storage:	Maintain refrigerated at 2-8°C for up to 6 months. For long term storage store at -20°C.
Uses:	IHC - Paraffin (5 µg/ml), Western blot (1:1000) (Optimal dilution to be determined by the researcher)
Size:	200 µl

Immunohistochemistry Image:



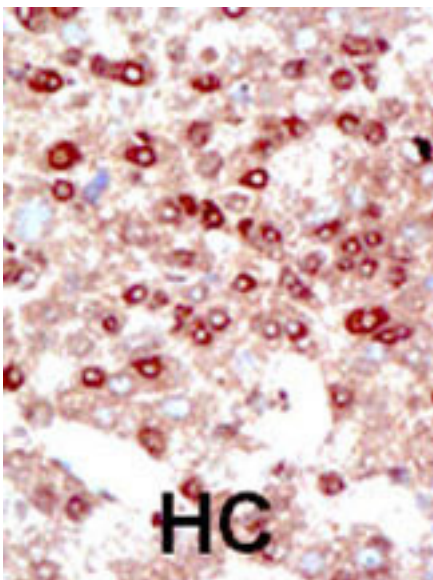
Anti-SUMO2/SUMO3 antibody IHC of human adrenal. Immunohistochemistry of formalin-fixed, paraffin-embedded tissue after heat-induced antigen retrieval. Antibody LS-B4753 concentration 5 ug/ml.

Immunohistochemistry Image:



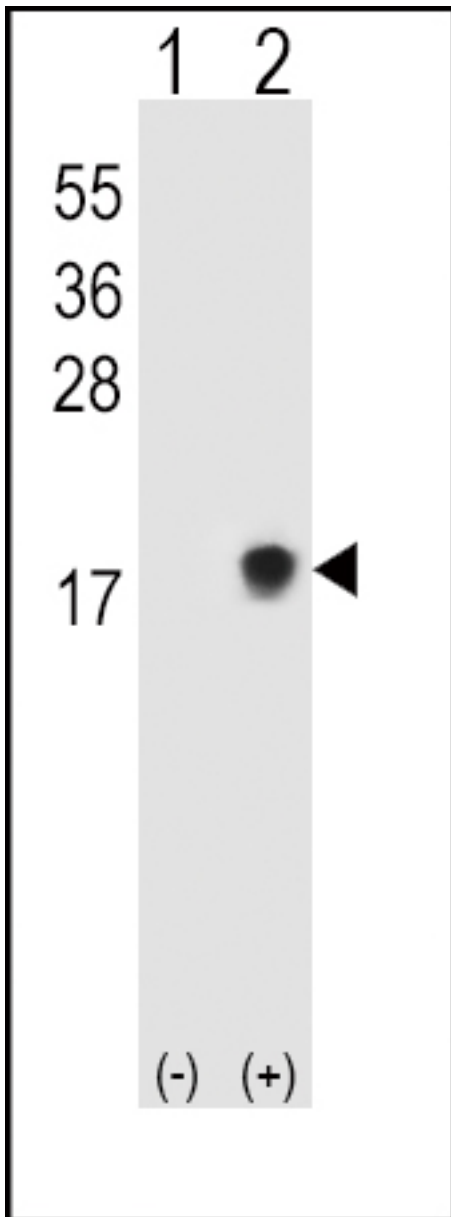
Anti-SUMO2/SUMO3 antibody IHC of human cerebellum. Immunohistochemistry of formalin-fixed, paraffin-embedded tissue after heat-induced antigen retrieval. Antibody LS-B4753 concentration 5 ug/ml.

Immunohistochemistry Image:



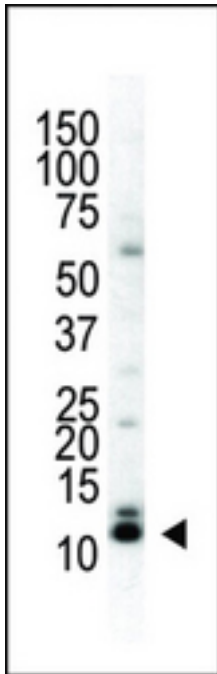
Formalin-fixed and paraffin-embedded human cancer tissue reacted with the primary antibody, which was peroxidase-conjugated to the secondary antibody, followed by DAB staining. This data demonstrates the use of this antibody for immunohistochemistry; clinical relevance has not been evaluated. BC = breast carcinoma; HC = hepatocarcinoma.

Western Blot Image:



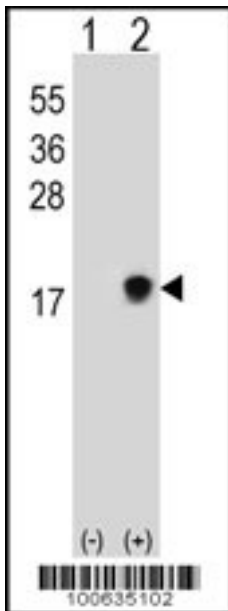
COS-7 cells were transfected for 24 hrs with a plasmid expressing FLAG-ERM (left panels) or FLAG-ERM KR12345 (right panels). Untreated (-) and H₂O₂-treated (+) cells were collected for immunoblot analysis. Top panels: cell lysates probed by Western blot with an anti-ERM antibody. Center panels: cell lysates immunoprecipitated (IP) with an anti-FLAG antibody followed by WB with AP1222a SUMO-1 antibody. Bottom panels: cell lysates immunoprecipitated with an anti-FLAG antibody followed by WB with LS-B4753 SUMO-2/3 antibody. (*) represents immunoprecipitated ERM-like forms recognized by anti-SUMO antibodies.

Western Blot Image:



The anti-SUMO2/3 C-term Pab LS-B4753 is used in Western blot to detect SUMO2/3 in HeLa cell lysate.

Western Blot Image:



Western blot of SUMO2/3 (arrow) using rabbit polyclonal SUMO2/3 Antibody (Q65) LS-B4753. 293 cell lysates (2 ug/lane) either nontransfected (Lane 1) or transiently transfected (Lane 2) with the SUMO2/3 gene.

Requested From:

Japan

Laboratory Reagent For In Vitro Research Use Only

Not for resale without prior written consent from LifeSpan BioSciences, Inc.

Created on 9/23/2014

© 2014 LifeSpan BioSciences