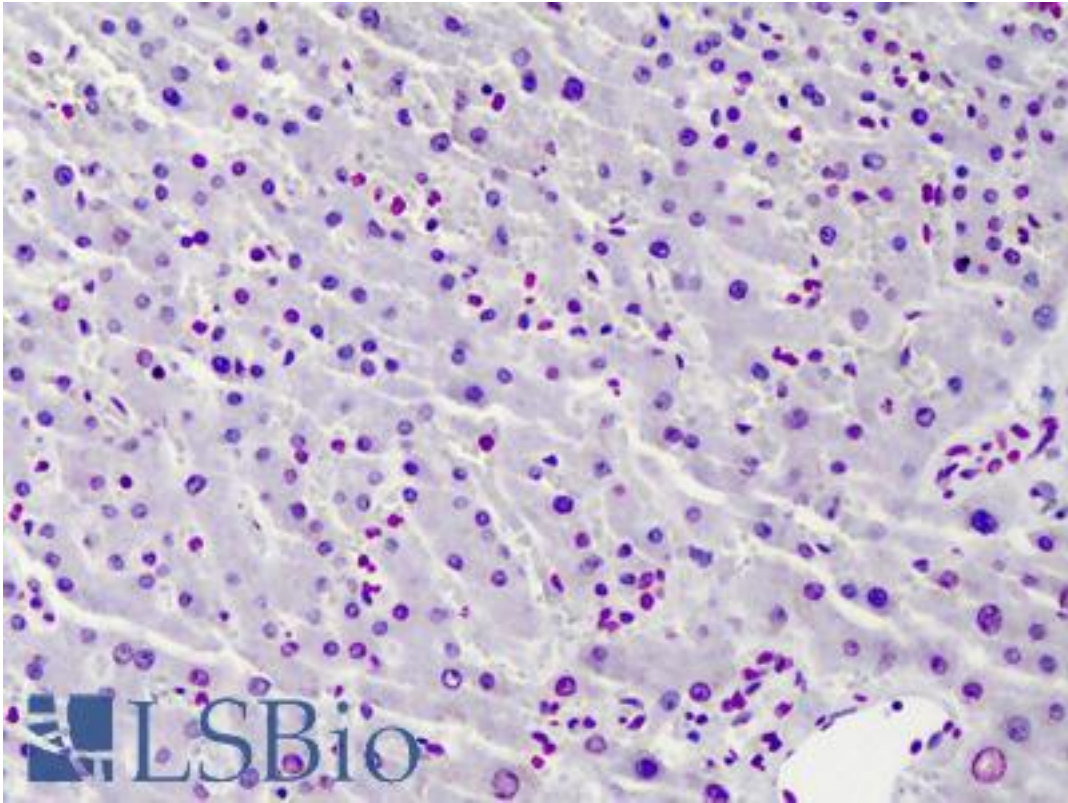


Histone H4 Rabbit anti-Human Polyclonal (Acetyl-Lys12) Antibody - LS-B4750 - LSBio

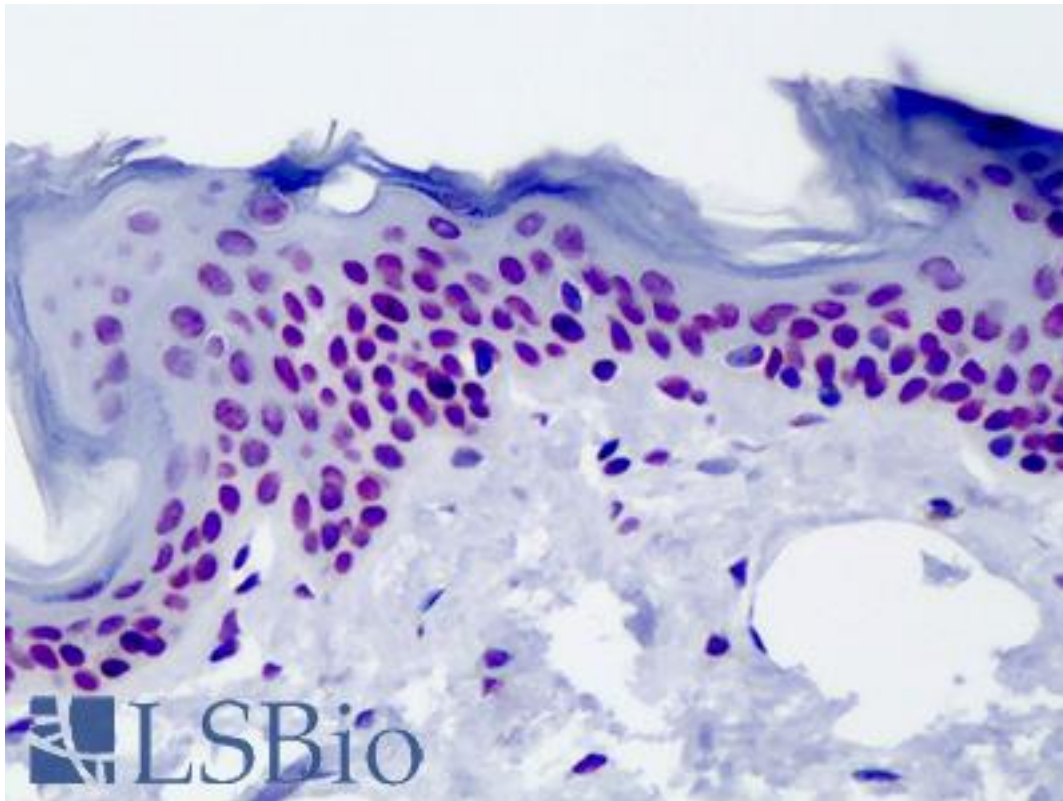
| | |
|-----------------------------|---|
| CatalogID: | LS-B4750 |
| Validation: | This antibody replaces catalog number LS-C24407. It has been validated for use in the following assays: IHC-P. |
| Target: | Histone H4 |
| Host | Histone H4 antibody was produced in Rabbit |
| Clonality: | Polyclonal |
| Isotype: | IgG |
| Immunogen Species: | Histone H4 antibody was raised against Human |
| Antigen Type: | Synthetic peptide |
| Immunogen: | Histone H4 antibody was raised against synthetic acetylpeptide (KLH coupled) corresponding to residues surrounding Lys12 of human histone H4. |
| Specificity: | Recognizes endogenous levels of human histone H4 acetylated at Lys12. It does not cross-react with other acetylated histones. Species cross-reactivity: Monkey, mouse and rat. Note: Adherence to the attached protocol is extremely important. |
| Epitope: | Acetyl-Lys12 |
| Reactivity: | Human, Monkey, Mouse, Rat |
| Purification: | Protein A purified |
| Presentation: | 10 mM HEPES, pH 7.5, 150 mM sodium chloride, 0.1 mg/ml BSA, 50% glycerol. No preservative added. |
| Recommended Storage: | Short term 4°C, long term aliquot and store at -20°C, avoid freeze thaw cycles. |
| Usage Summary: | Suitable for use in ELISA, Western Blot, Immunofluorescence and Immunohistochemistry. Western Blot: 1:1000. Immunohistochemistry (Paraffin): 1:100. Immunofluorescence (IF-IC): 1:1600. |
| Uses: | IHC - Paraffin (1:100), Immunofluorescence, Western blot (1:1000), ELISA (Optimal dilution to be determined by the researcher) |
| Size: | 50 µl |

Immunohistochemistry Image:



Anti-Histone H4 antibody IHC of human liver. Immunohistochemistry of formalin-fixed, paraffin-embedded tissue after heat-induced antigen retrieval. Antibody LS-B4750 dilution 1:100.

Immunohistochemistry Image:



Anti-Histone H4 antibody IHC of human skin. Immunohistochemistry of formalin-fixed, paraffin-embedded tissue after heat-induced antigen retrieval. Antibody LS-B4750 dilution 1:100.

Requested From:

Japan

Laboratory Reagent For In Vitro Research Use Only

Not for resale without prior written consent from LifeSpan BioSciences, Inc.

Created on 9/23/2014

© 2014 LifeSpan BioSciences