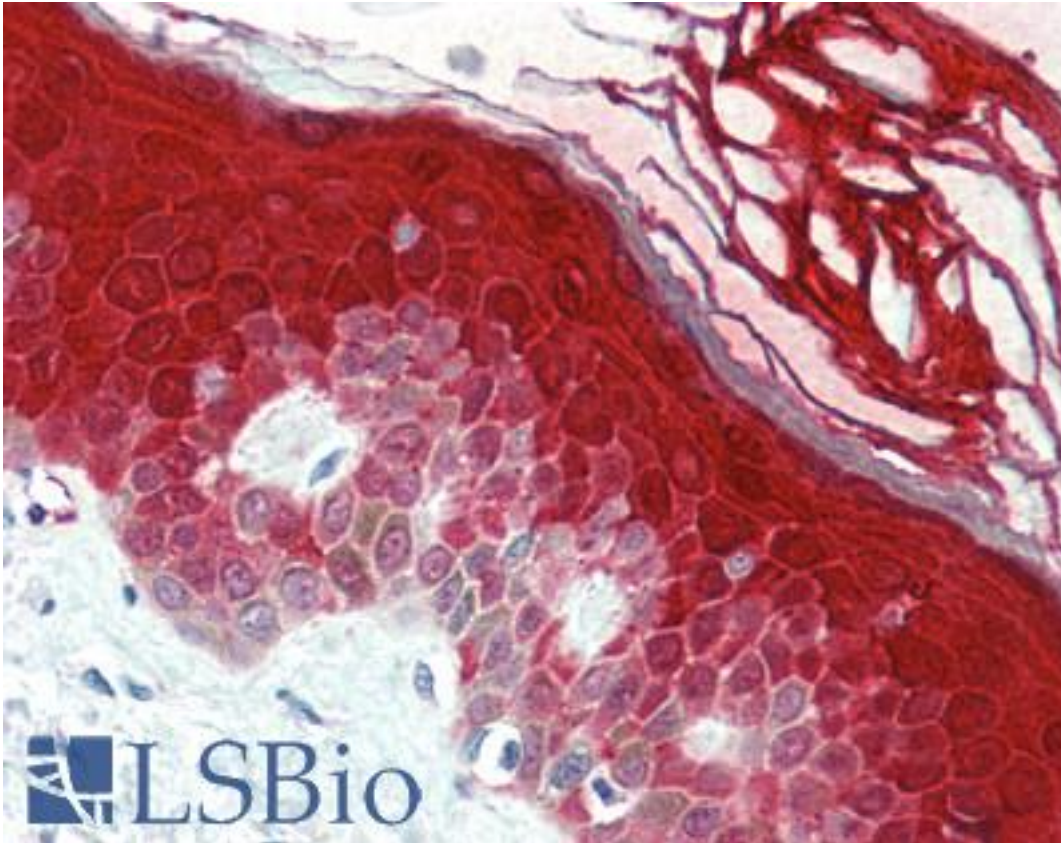


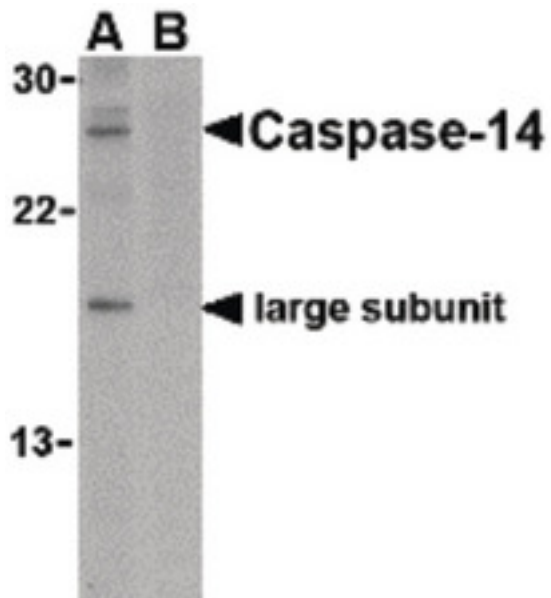
CASP14 / Caspase 14 Rabbit anti-Human Polyclonal (C-Terminus) Antibody - LS-B474 - LSBio	
CatalogID:	LS-B474
Validation:	This antibody replaces catalog number LS-C19463. It has been validated for use in the following assays: IHC.
Target:	Caspase 14, Apoptosis-related Cysteine Peptidase (CASP14)
Synonyms:	CASP14 Antibody, Caspase-14 Antibody, Caspase 14 Antibody, MICE Antibody, CASP-14 Antibody
Family / Subfamily:	Protease / Cysteine C14
Host	CASP14 antibody was produced in Rabbit
Clonality:	Polyclonal
Immunogen Species:	CASP14 / Caspase 14 antibody was raised against Human
Antigen Type:	Synthetic peptide
Immunogen:	CASP14 / Caspase 14 antibody was raised against synthetic peptide from human CASP14 / Caspase 14.
Specificity:	16 amino acid peptide from near the carboxy-terminus of human caspase-14
Epitope:	C-Terminus
Reactivity:	Human, Mouse, Rat
Purification:	Purified
Presentation:	PBS, 0.02% sodium azide.
Recommended Storage:	Short term 4°C, long term aliquot and store at -20°C, avoid freeze thaw cycles. Store undiluted.
Usage Summary:	Immunohistochemistry: LS-B474 was validated for use in immunohistochemistry on a panel of 21 formalin-fixed, paraffin-embedded (FFPE) human tissues after heat induced antigen retrieval in pH 6.0 citrate buffer. After incubation with the primary antibody, slides were incubated with biotinylated secondary antibody, followed by alkaline phosphatase-streptavidin and chromogen. The stained slides were evaluated by a pathologist to confirm staining specificity. The optimal working concentration for LS-B474 was determined to be 5 ug/ml.
Uses:	IHC - Paraffin (5 µg/ml), Western blot (1 µg/ml) (Optimal dilution to be determined by the researcher)
Size:	50 µg
Concentration:	1 mg/ml

Immunohistochemistry Image:



Anti-Caspase 14 antibody IHC of human skin. Immunohistochemistry of formalin-fixed, paraffin-embedded tissue after heat-induced antigen retrieval. Antibody LS-B474 concentration 5 ug/ml.

Western Blot Image:



Western blot of caspase-14 in Jurkat cell lysate in the (A) absence or (B) presence of blocking peptide with caspase-14 antibody at 1 ug/ml.

Requested From:	Japan
Laboratory Reagent For In Vitro Research Use Only	
Not for resale without prior written consent from LifeSpan BioSciences, Inc.	
Created on 9/23/2014	
© 2014 LifeSpan BioSciences	