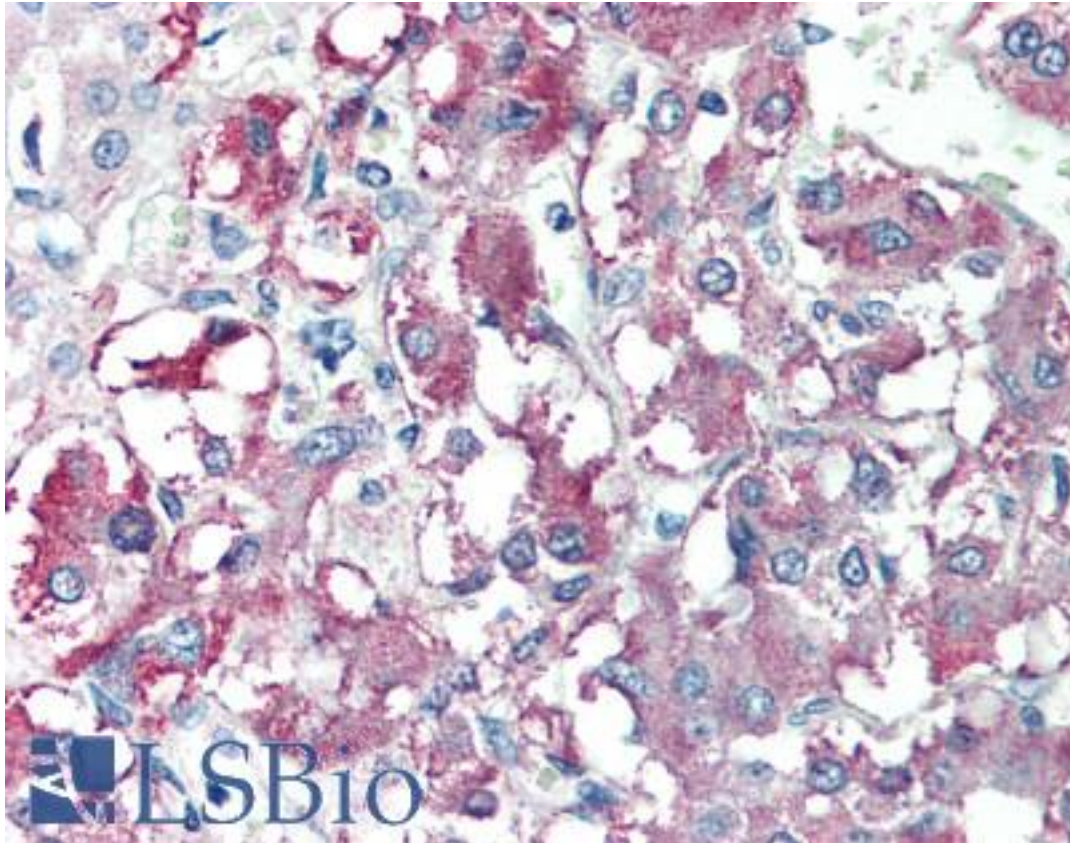


**CARD9 Rabbit anti-Human Polyclonal (aa521-536) Antibody - LS-B473 - LSBio**

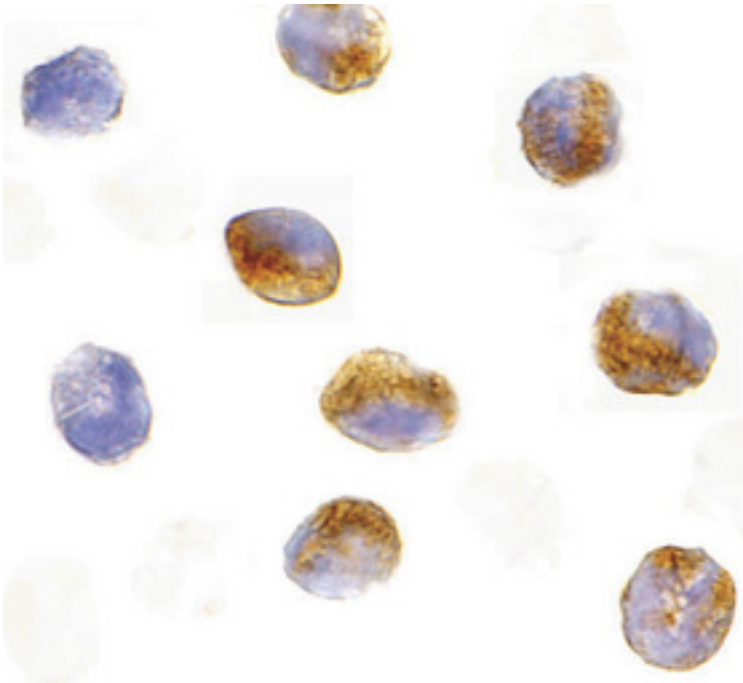
<b>CatalogID:</b>	LS-B473
<b>Validation:</b>	This antibody replaces catalog number LS-C411. It has been validated for use in the following assays: IHC.
<b>Target:</b>	caspase recruitment domain family, member 9 (CARD9)
<b>Synonyms:</b>	CARD9 Antibody, CANDF2 Antibody, HCARD9 Antibody
<b>Family / Subfamily:</b>	Apoptosis
<b>Host</b>	CARD9 antibody was produced in Rabbit
<b>Clonality:</b>	Polyclonal
<b>Immunogen Species:</b>	CARD9 antibody was raised against Human
<b>Antigen Type:</b>	Synthetic peptide
<b>Immunogen:</b>	CARD9 antibody was raised against synthetic peptide from human CARD9. Percent identity by BLAST analysis: Human, Gorilla, Gibbon, Marmoset (100%); Mouse, Elephant, Panda, Dog, Horse, Opossum (94%); Monkey, Rat (88%); Bovine, Turkey, Chicken (81%).
<b>Specificity:</b>	Synthetic peptide (DRENTTGSDNTDTEGS) corresponding to amino acids 521 to 536 of human CARD9 The sequence is different from that of rat origin by two amino acids.
<b>Epitope:</b>	aa521-536
<b>Reactivity:</b>	Human, Gorilla, Gibbon, Monkey
<b>Predicted Reactivity:</b>	Mouse, Dog, Horse
<b>Purification:</b>	Immunoaffinity purified
<b>Presentation:</b>	PBS, 0.02% sodium azide.
<b>Recommended Storage:</b>	Short term 4°C, long term aliquot and store at -20°C, avoid freeze thaw cycles. Store undiluted.
<b>Usage Summary:</b>	Immunohistochemistry: LS-B473 was validated for use in immunohistochemistry on a panel of 21 formalin-fixed, paraffin-embedded (FFPE) human tissues after heat induced antigen retrieval in pH 6.0 citrate buffer. After incubation with the primary antibody, slides were incubated with biotinylated secondary antibody, followed by alkaline phosphatase-streptavidin and chromogen. The stained slides were evaluated by a pathologist to confirm staining specificity. The optimal working concentration for LS-B473 was determined to be 10 µg/ml.
<b>Uses:</b>	IHC - Paraffin (10 µg/ml), ICC, Western blot (0.5 - 1 µg/ml) (Optimal dilution to be determined by the researcher)
<b>Size:</b>	50 µg
<b>Concentration:</b>	1 mg/ml

**Immunohistochemistry Image:**



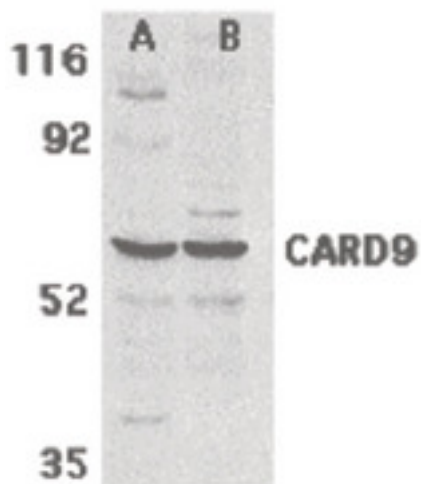
Anti-CARD9 antibody IHC of human adrenal. Immunohistochemistry of formalin-fixed, paraffin-embedded tissue after heat-induced antigen retrieval. Antibody LS-B473 concentration 10 ug/ml.

**Immunocytochemistry Image:**



Immunocytochemistry of CARD9 in K562 cells with CARD9 antibody at 10 ug/ml.

**Western Blot Image:**



Western blot of CARD9 expression in human MDA-MB-361 (A) and PC-3 (B) cell lysate with CARD9 antibody at 2.5 ug /ml.

**Requested From:**

Japan

Laboratory Reagent For In Vitro Research Use Only

Not for resale without prior written consent from LifeSpan BioSciences, Inc.

Created on 9/23/2014

© 2014 LifeSpan BioSciences