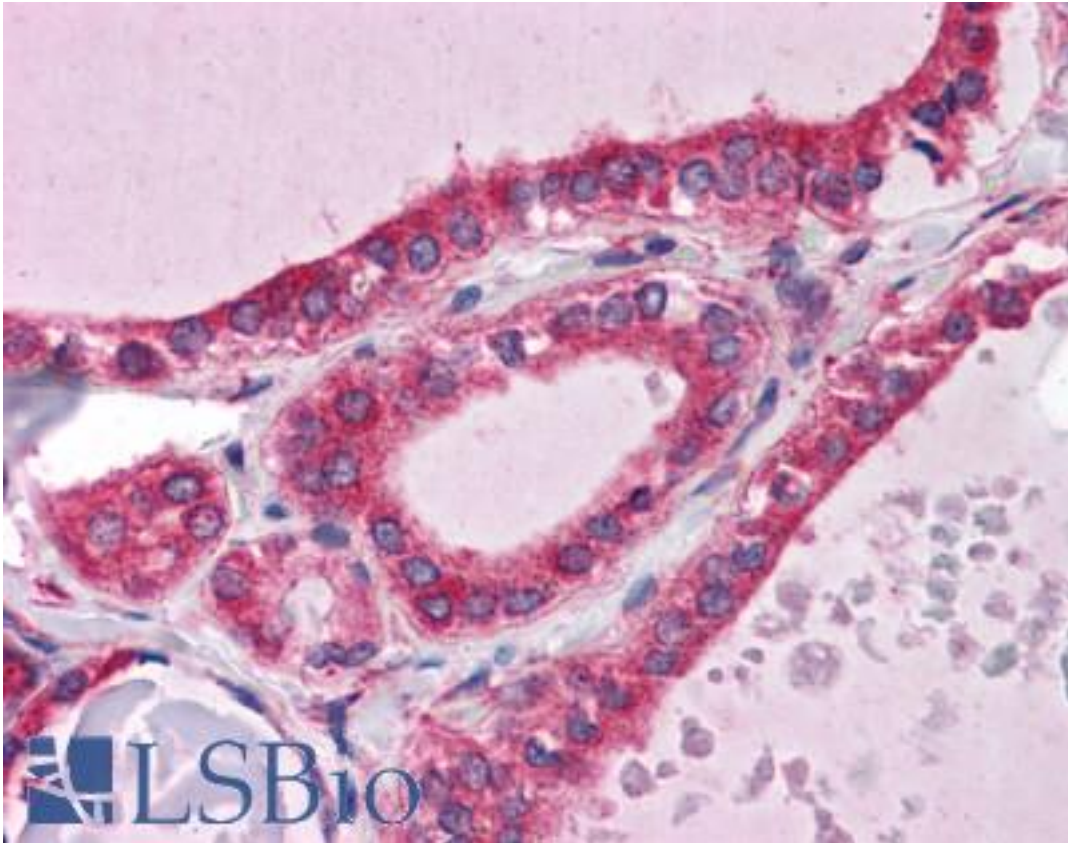


WDR35 Rabbit anti-Human Polyclonal (N-Terminus) Antibody - LS-B4727 - LSBio

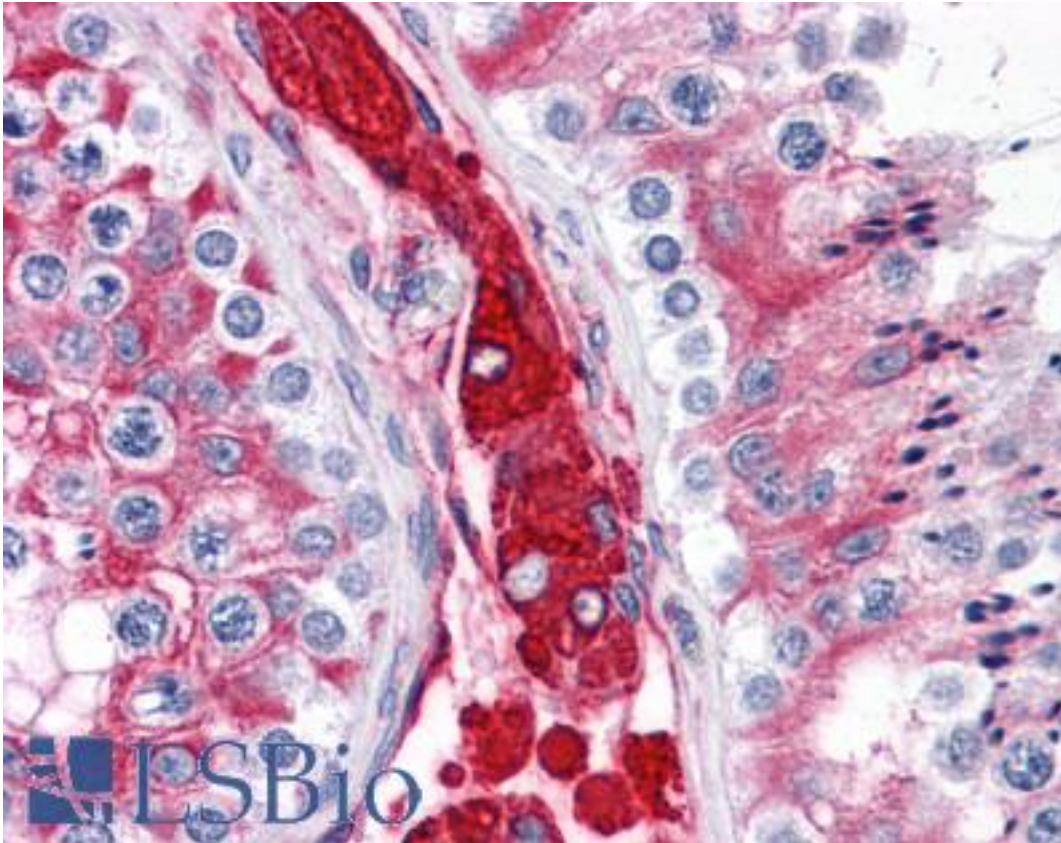
CatalogID:	LS-B4727
Validation:	This antibody replaces catalog number LS-C114284. It has been validated for use in the following assays: IHC-P.
Target:	WD repeat domain 35 (WDR35)
Synonyms:	WDR35 Antibody, CED2 Antibody, IFT121 Antibody, KIAA1336 Antibody, WD repeat domain 35 Antibody, Naofen Antibody
Host	WDR35 antibody was produced in Rabbit
Clonality:	Polyclonal
Immunogen Species:	WDR35 antibody was raised against Human
Antigen Type:	Synthetic peptide
Immunogen:	WDR35 antibody was raised against peptide from the N-terminus of human WDR35
Specificity:	Human WDR35
Epitope:	N-Terminus
Reactivity:	Human
Purification:	Immunoaffinity purified
Presentation:	PBS, 0.02% sodium azide.
Recommended Storage:	Short term 4°C, long term aliquot and store at -20°C, avoid freeze thaw cycles. Store undiluted.
Uses:	IHC - Paraffin (5 µg/ml) (Optimal dilution to be determined by the researcher)
Size:	50 µg
Concentration:	1 mg/ml

Immunohistochemistry Image:



Anti-WDR35 antibody IHC of human thyroid. Immunohistochemistry of formalin-fixed, paraffin-embedded tissue after heat-induced antigen retrieval. Antibody LS-B4727 concentration 5 ug/ml.

Immunohistochemistry Image:



Anti-WDR35 antibody IHC of human testis. Immunohistochemistry of formalin-fixed, paraffin-embedded tissue after heat-induced antigen retrieval. Antibody LS-B4727 concentration 5 ug/ml.

Requested From:

Japan

Laboratory Reagent For In Vitro Research Use Only

Not for resale without prior written consent from LifeSpan BioSciences, Inc.

Created on 9/23/2014

© 2014 LifeSpan BioSciences