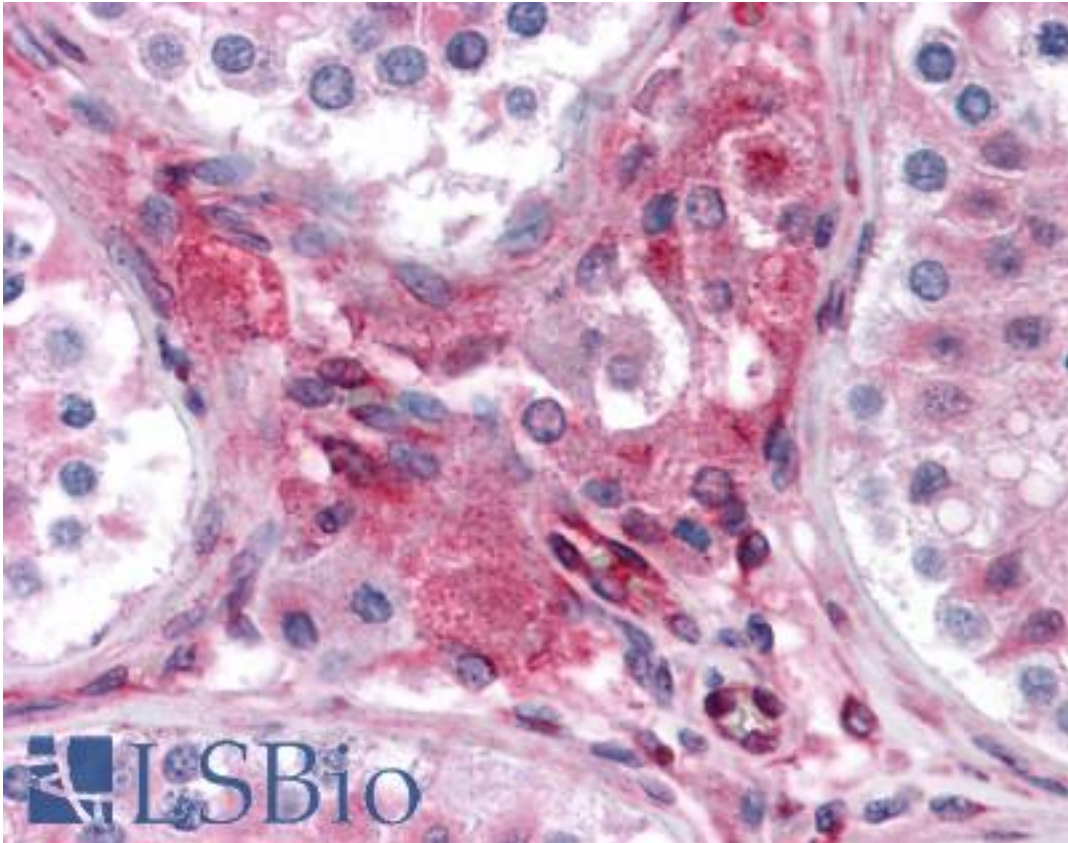


PTCHD2 Rabbit anti-Human Polyclonal (N-Terminus) Antibody - LS-B4715 - LSBio

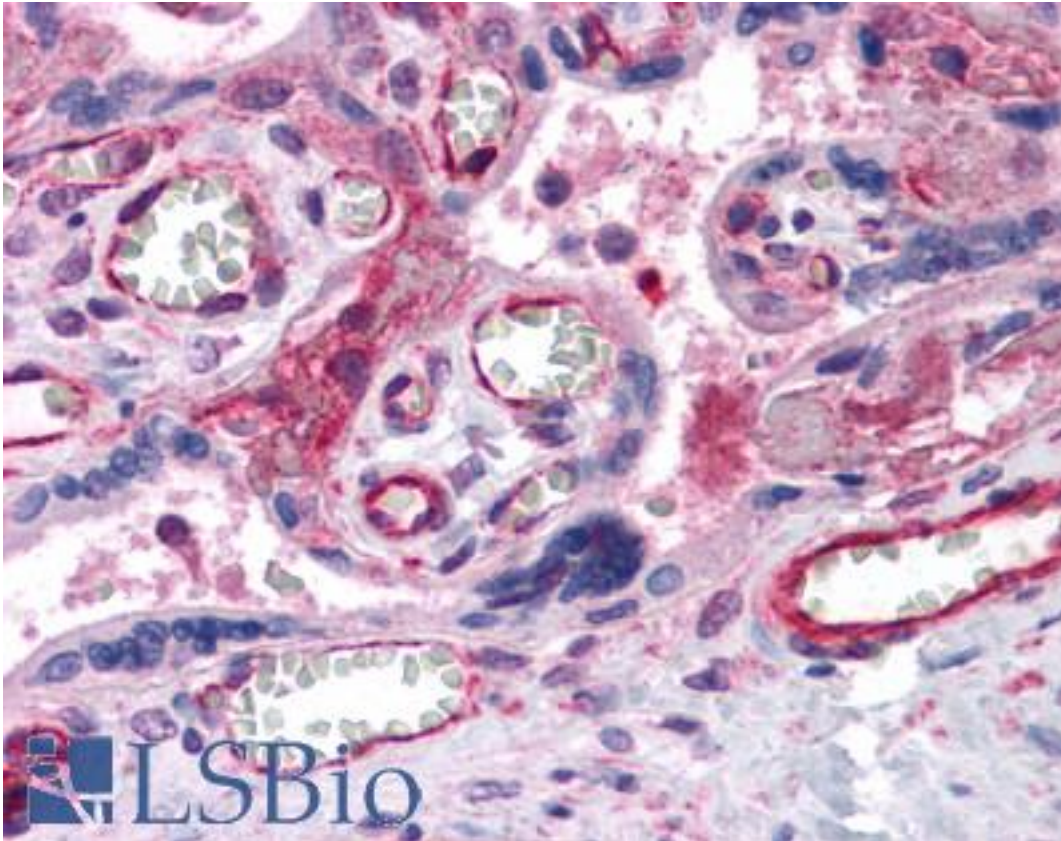
CatalogID:	LS-B4715
Validation:	This antibody replaces catalog number LS-C114254. It has been validated for use in the following assays: IHC-P.
Target:	patched domain containing 2 (PTCHD2)
Synonyms:	PTCHD2 Antibody, Dispatched 3 Antibody, DISP3 Antibody, Patched domain containing 2 Antibody, KIAA1337 Antibody, Protein dispatched homolog 3 Antibody
Host	PTCHD2 antibody was produced in Rabbit
Clonality:	Polyclonal
Immunogen Species:	PTCHD2 antibody was raised against Human
Antigen Type:	Synthetic peptide
Immunogen:	PTCHD2 antibody was raised against a 19 amino acid peptide from near the amino terminus of human PTCHD2.
Epitope:	N-Terminus
Reactivity:	Human
Purification:	Immunoaffinity purified
Presentation:	PBS, 0.02% sodium azide.
Recommended Storage:	Short term 4°C, long term aliquot and store at -20°C, avoid freeze thaw cycles. Store undiluted.
Uses:	IHC - Paraffin (5 µg/ml) (Optimal dilution to be determined by the researcher)
Size:	50 µg
Concentration:	1 mg/ml

Immunohistochemistry Image:



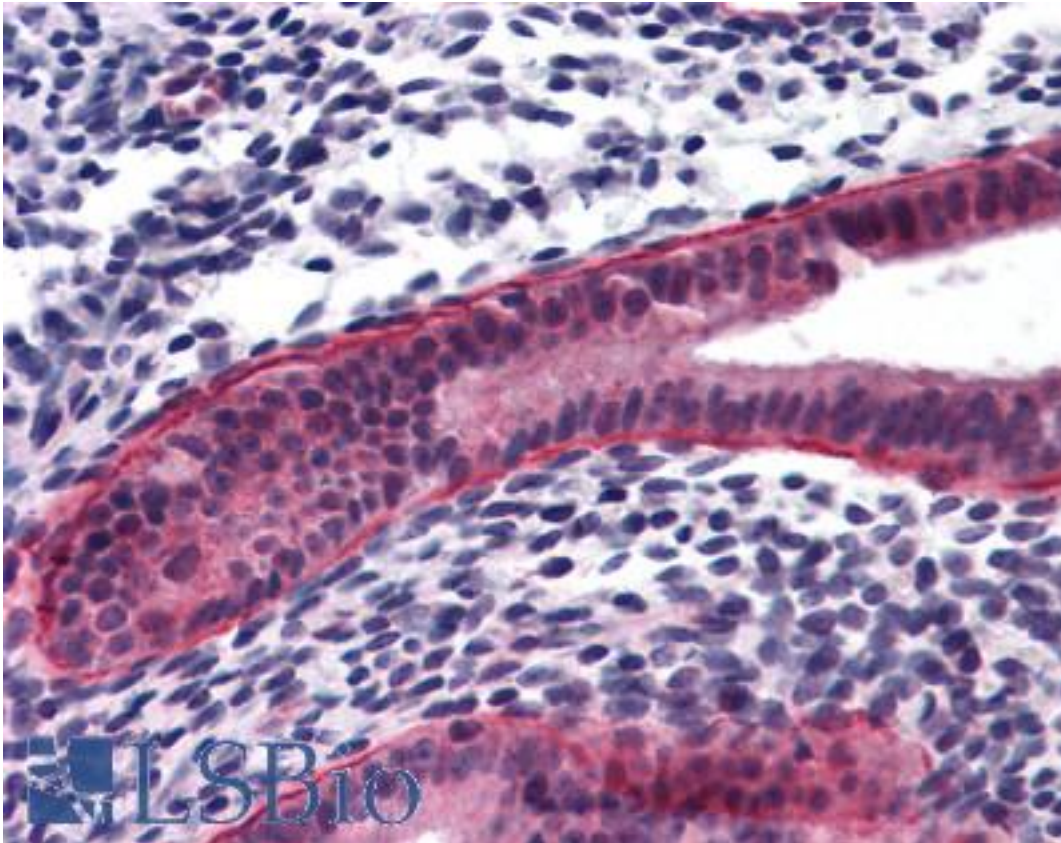
Anti-PTCHD2 antibody IHC of human testis. Immunohistochemistry of formalin-fixed, paraffin-embedded tissue after heat-induced antigen retrieval. Antibody LS-B4715 concentration 5 ug/ml.

Immunohistochemistry Image:



Anti-PTCHD2 antibody IHC of human placenta. Immunohistochemistry of formalin-fixed, paraffin-embedded tissue after heat-induced antigen retrieval. Antibody LS-B4715 concentration 5 ug/ml.

Immunohistochemistry Image:



Anti-PTCHD2 antibody IHC of human uterus. Immunohistochemistry of formalin-fixed, paraffin-embedded tissue after heat-induced antigen retrieval. Antibody LS-B4715 concentration 5 ug/ml.

Requested From:

Japan

Laboratory Reagent For In Vitro Research Use Only

Not for resale without prior written consent from LifeSpan BioSciences, Inc.

Created on 9/23/2014

© 2014 LifeSpan BioSciences