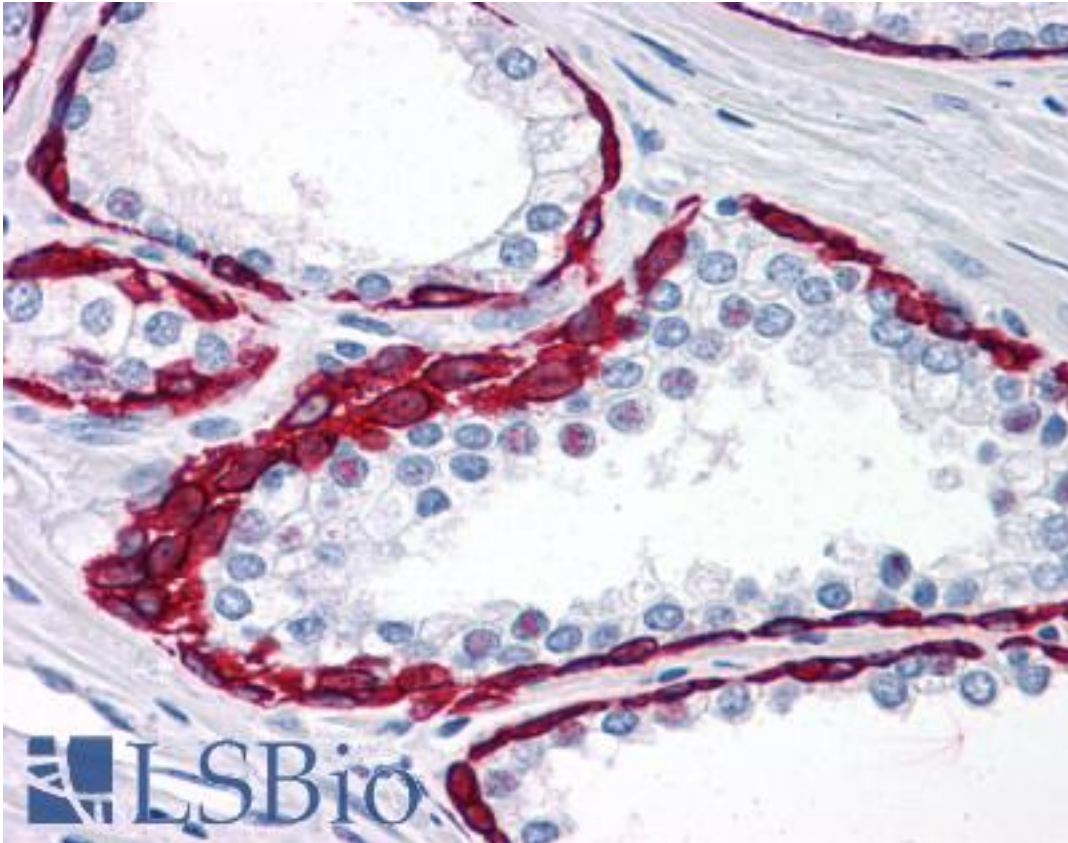


BMP15 / BMP-15 Rabbit anti-Human Polyclonal (N-Terminus) Antibody - LS-B4712 - LSBio

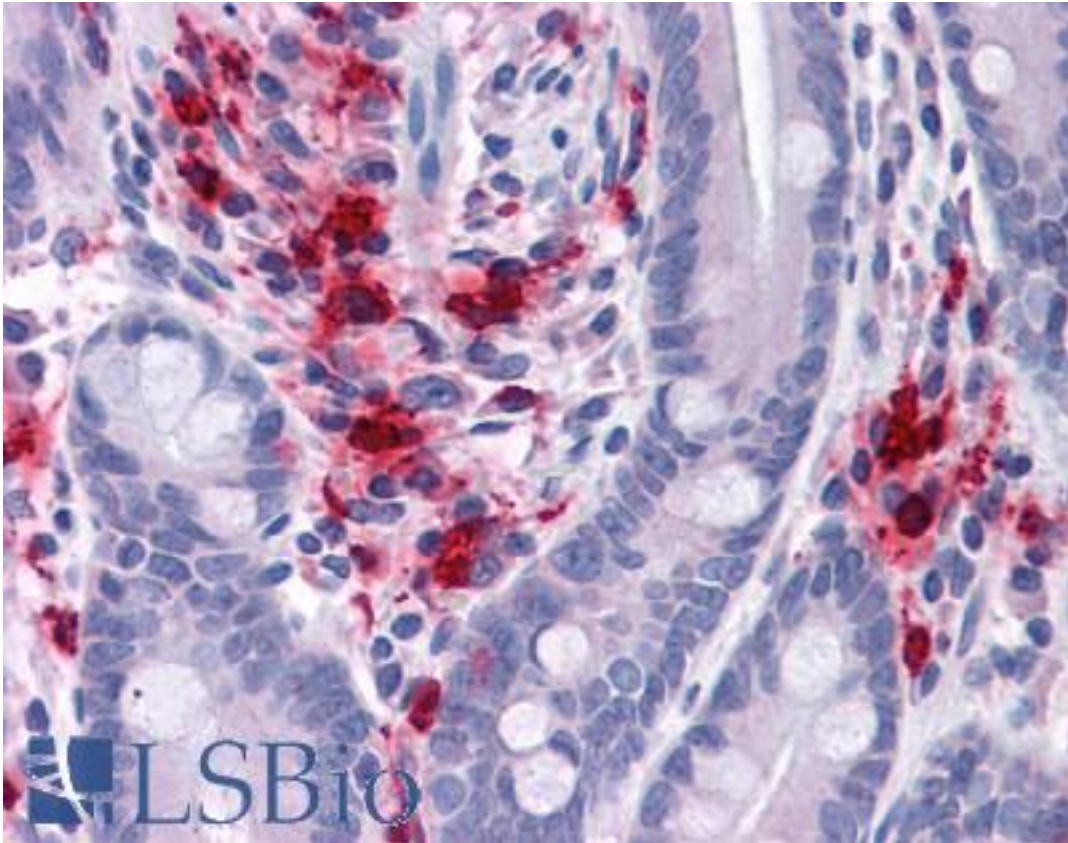
CatalogID:	LS-B4712
Validation:	This antibody replaces catalog number LS-C114250. It has been validated for use in the following assays: IHC-P.
Target:	bone morphogenetic protein 15 (BMP15)
Synonyms:	BMP15 Antibody, Bone morphogenetic protein 15 Antibody, BMP-15 Antibody, GDF9B Antibody, GDF-9B Antibody, ODG2 Antibody, POF4 Antibody
Family / Subfamily:	TGF beta / not assigned-TGF beta
Host	BMP15 antibody was produced in Rabbit
Clonality:	Polyclonal
Immunogen Species:	BMP15 / BMP-15 antibody was raised against Human
Immunogen:	BMP15 / BMP-15 antibody was raised against peptide comprised of 18 amino acids near the amino terminus of human BMP15.
Epitope:	N-Terminus
Reactivity:	Human
Purification:	Immunoaffinity purified
Presentation:	PBS, 0.02% sodium azide.
Recommended Storage:	Short term 4°C, long term aliquot and store at -20°C, avoid freeze thaw cycles. Store undiluted.
Uses:	IHC - Paraffin (5 µg/ml) (Optimal dilution to be determined by the researcher)
Size:	50 µg
Concentration:	1 mg/ml

Immunohistochemistry Image:



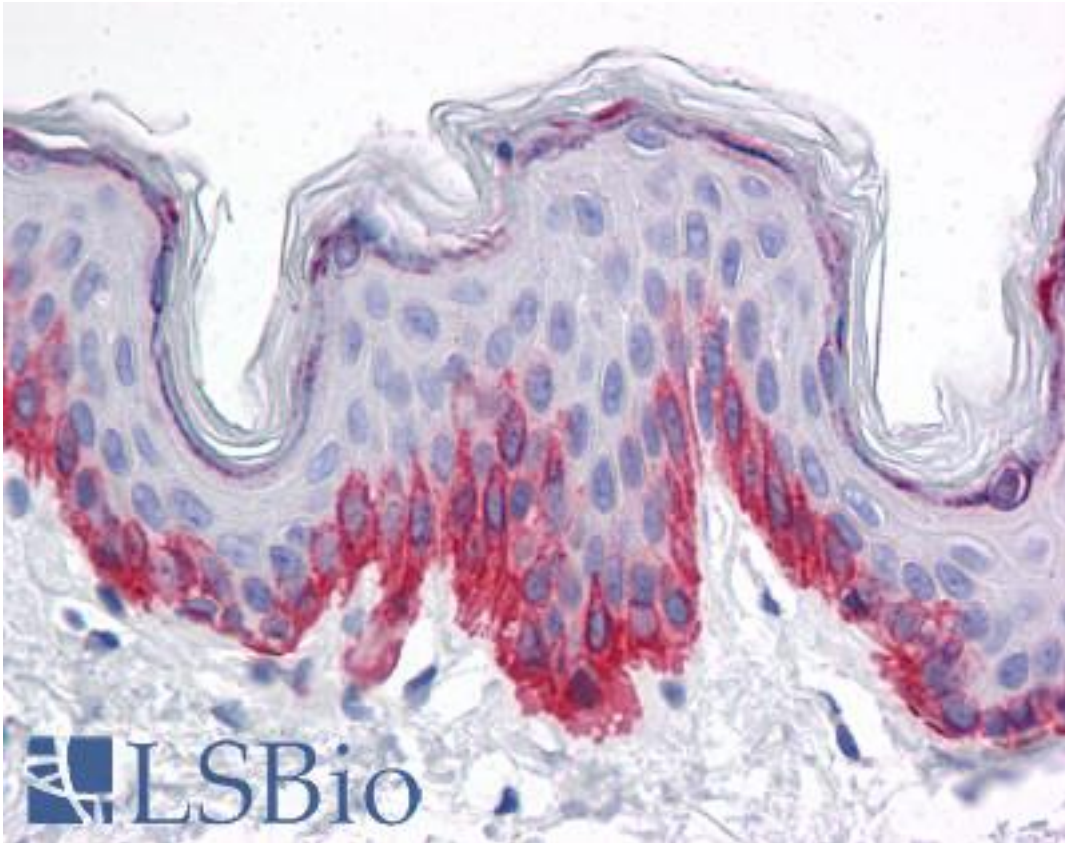
Anti-BMP15 antibody IHC of human prostate. Immunohistochemistry of formalin-fixed, paraffin-embedded tissue after heat-induced antigen retrieval. Antibody LS-B4712 concentration 5 ug/ml.

Immunohistochemistry Image:



Anti-BMP15 antibody IHC of human small intestine. Immunohistochemistry of formalin-fixed, paraffin-embedded tissue after heat-induced antigen retrieval. Antibody LS-B4712 concentration 5 ug/ml.

Immunohistochemistry Image:



Anti-BMP15 antibody IHC of human skin. Immunohistochemistry of formalin-fixed, paraffin-embedded tissue after heat-induced antigen retrieval. Antibody LS-B4712 concentration 5 ug/ml.

Requested From:

Japan

Laboratory Reagent For In Vitro Research Use Only

Not for resale without prior written consent from LifeSpan BioSciences, Inc.

Created on 9/23/2014

© 2014 LifeSpan BioSciences