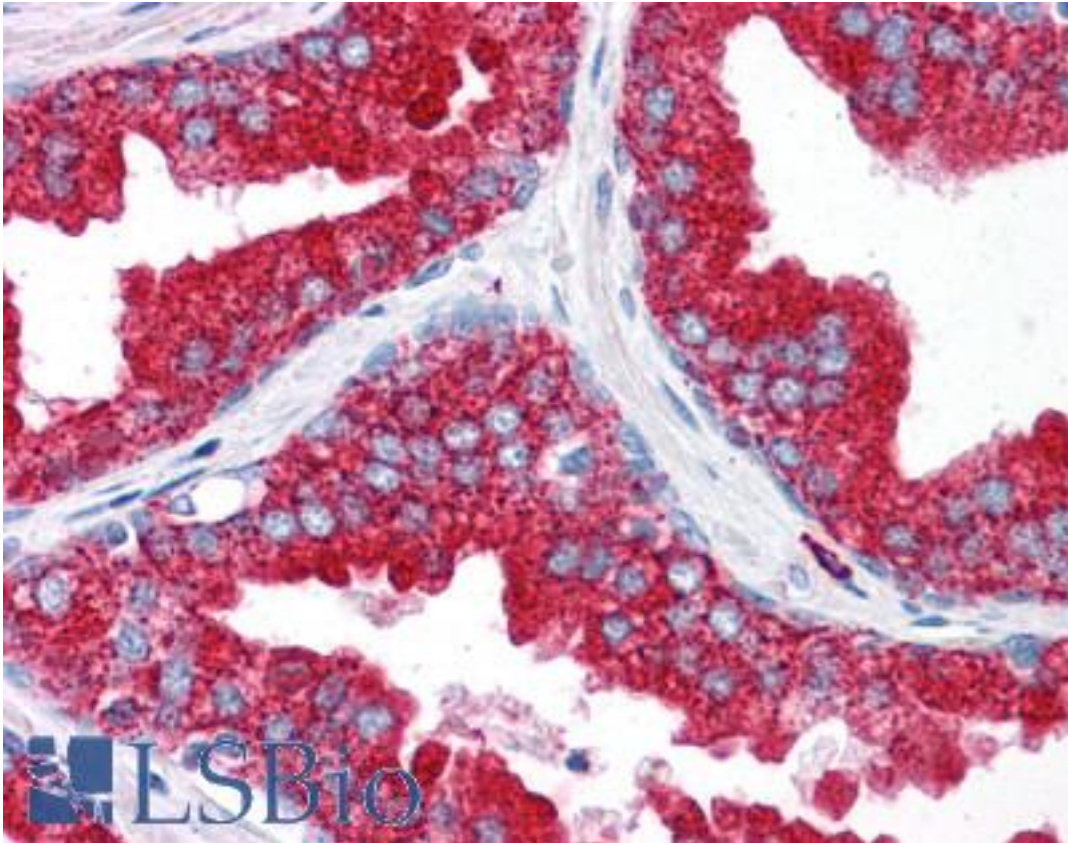


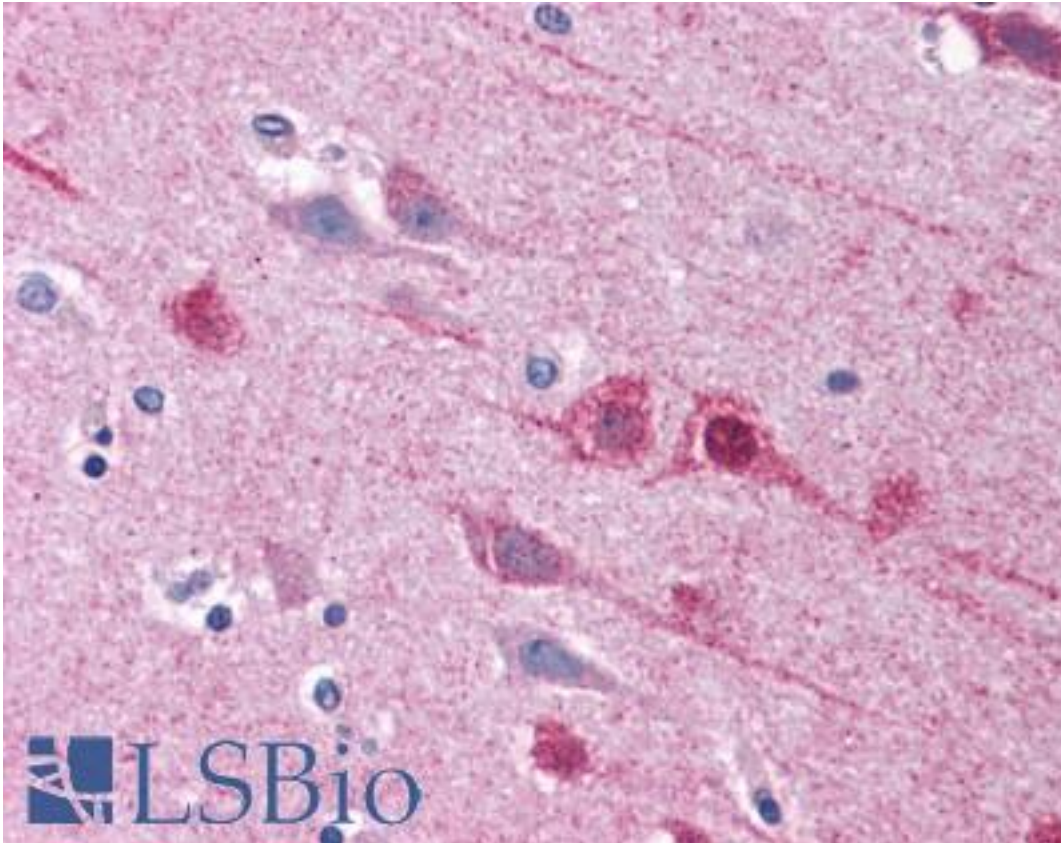
EMX2 Rabbit anti-Human Polyclonal (Internal) Antibody - LS-B4708 - LSBio	
CatalogID:	LS-B4708
Validation:	This antibody replaces catalog number LS-C114241. It has been validated for use in the following assays: IHC-P.
Target:	empty spiracles homeobox 2 (EMX2)
Synonyms:	EMX2 Antibody, Empty spiracles homeobox 2 Antibody, Empty spiracles-like protein 2 Antibody, Homeobox protein EMX2 Antibody, Empty spiracles homolog 2 Antibody
Host	EMX2 antibody was produced in Rabbit
Clonality:	Polyclonal
Immunogen Species:	EMX2 antibody was raised against Human
Antigen Type:	Synthetic peptide
Immunogen:	EMX2 antibody was raised against an 16 amino acid peptide near the amino terminus of human EMX2.
Epitope:	Internal
Reactivity:	Human
Purification:	Immunoaffinity purified
Presentation:	PBS, 0.02% sodium azide.
Recommended Storage:	Short term 4°C, long term aliquot and store at -20°C, avoid freeze thaw cycles. Store undiluted.
Uses:	IHC - Paraffin (5 µg/ml) (Optimal dilution to be determined by the researcher)
Size:	50 µg
Concentration:	1 mg/ml

Immunohistochemistry Image:



Anti-EMX2 antibody IHC of human prostate. Immunohistochemistry of formalin-fixed, paraffin-embedded tissue after heat-induced antigen retrieval. Antibody LS-B4708 concentration 5 ug/ml.

Immunohistochemistry Image:



Anti-EMX2 antibody IHC of human brain, cortex. Immunohistochemistry of formalin-fixed, paraffin-embedded tissue after heat-induced antigen retrieval. Antibody LS-B4708 concentration 5 ug/ml.

Requested From:

Japan

Laboratory Reagent For In Vitro Research Use Only

Not for resale without prior written consent from LifeSpan BioSciences, Inc.

Created on 9/23/2014

© 2014 LifeSpan BioSciences