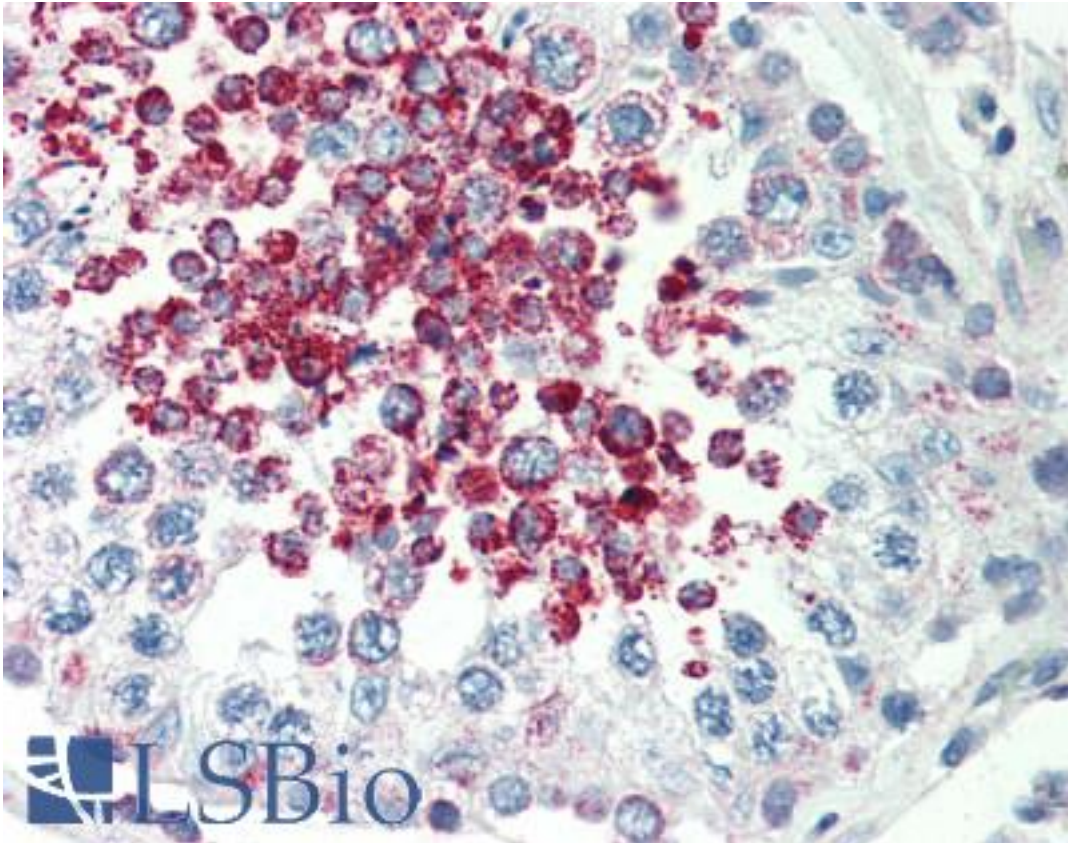


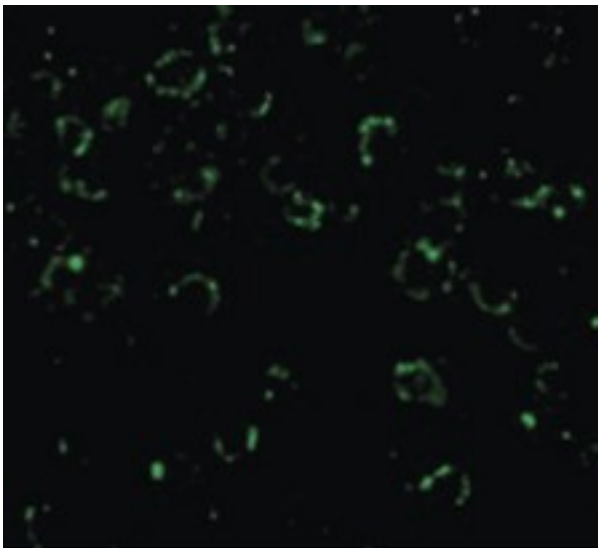
CARD10 / CARMA3 Rabbit anti-Human Polyclonal (C-Terminus) Antibody - LS-B470 - LSBio	
CatalogID:	LS-B470
Validation:	This antibody replaces catalog number LS-C19466. It has been validated for use in the following assays: IHC.
Target:	caspase recruitment domain family, member 10 (CARD10)
Synonyms:	CARD10 Antibody, CARMA3 Antibody, BIMP1 Antibody, Carma 3 Antibody
Family / Subfamily:	Apoptosis
Host	CARD10 antibody was produced in Rabbit
Clonality:	Polyclonal
Immunogen Species:	CARD10 / CARMA3 antibody was raised against Human
Antigen Type:	Synthetic peptide
Immunogen:	CARD10 / CARMA3 antibody was raised against synthetic peptide from human CARD10.
Specificity:	synthetic peptide corresponding to 14 amino acids at the C-terminus of human CARD10
Epitope:	C-Terminus
Reactivity:	Human, Mouse
Purification:	Immunoaffinity purified
Presentation:	PBS, 0.02% sodium azide.
Recommended Storage:	Short term 4°C, long term aliquot and store at -20°C, avoid freeze thaw cycles. Store undiluted.
Usage Summary:	Immunohistochemistry: LS-B470 was validated for use in immunohistochemistry on a panel of 21 formalin-fixed, paraffin-embedded (FFPE) human tissues after heat induced antigen retrieval in pH 6.0 citrate buffer. After incubation with the primary antibody, slides were incubated with biotinylated secondary antibody, followed by alkaline phosphatase-streptavidin and chromogen. The stained slides were evaluated by a pathologist to confirm staining specificity. The optimal working concentration for LS-B470 was determined to be 5 ug/ml.
Uses:	IHC - Paraffin (5 µg/ml), ICC, Western blot (5 - 10 µg/ml) (Optimal dilution to be determined by the researcher)
Size:	50 µg
Concentration:	1 mg/ml

Immunohistochemistry Image:



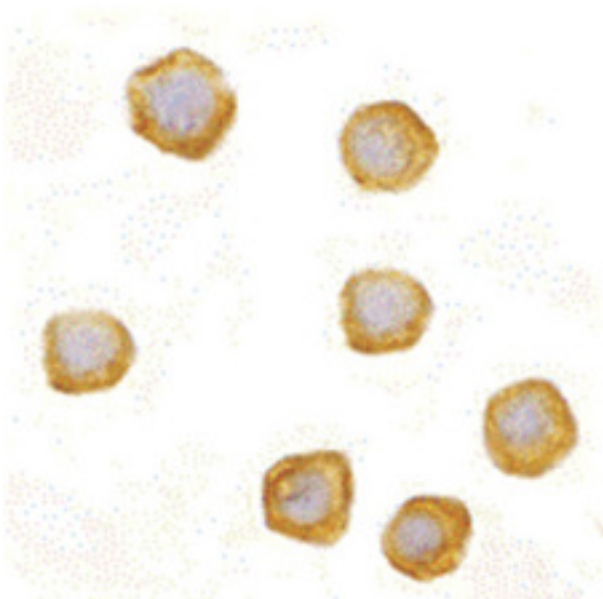
Anti-CARD10 antibody IHC of human testis. Immunohistochemistry of formalin-fixed, paraffin-embedded tissue after heat-induced antigen retrieval. Antibody LS-B470 concentration 5 ug/ml.

Immunofluorescence Image:



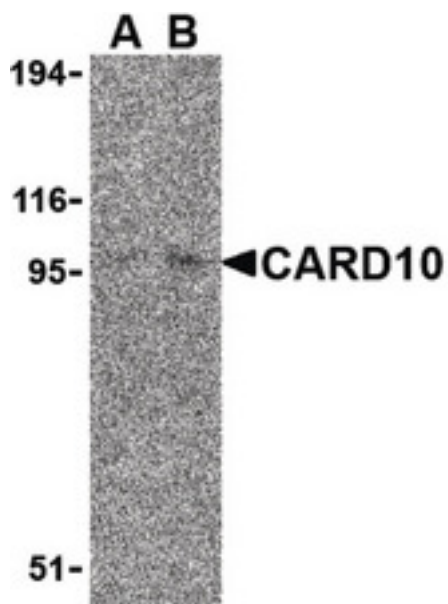
Immunofluorescence of CARD10 in EL4 cells with CARD10 antibody at 20 ug/ml.

Immunocytochemistry Image:



Immunocytochemistry of CARD10 in EL4 cells with CARD10 antibody at 10 ug/ml.

Western Blot Image:



Western blot of CARD10 expression in EL4 cell lysate with CARD10 antibody at (A) 5 and (B) 10 ug/ml.

Requested From:

Japan

Laboratory Reagent For In Vitro Research Use Only

Not for resale without prior written consent from LifeSpan BioSciences, Inc.

Created on 9/23/2014

© 2014 LifeSpan BioSciences