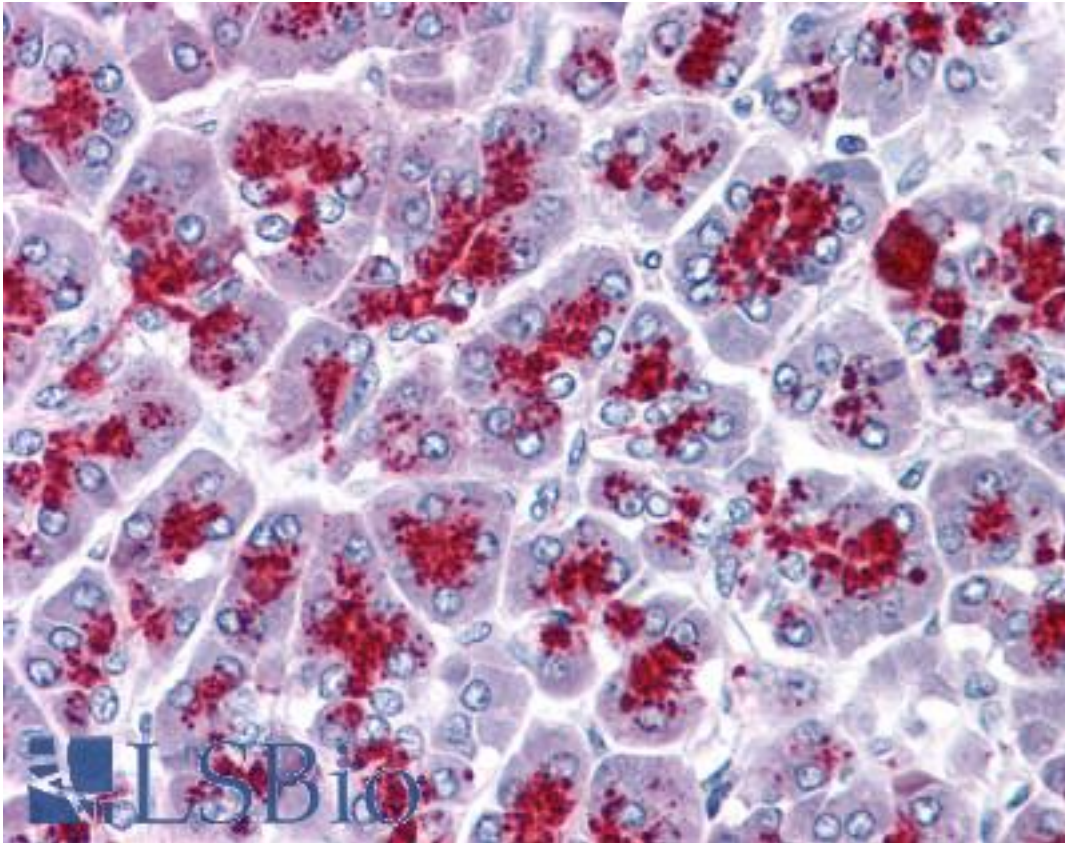


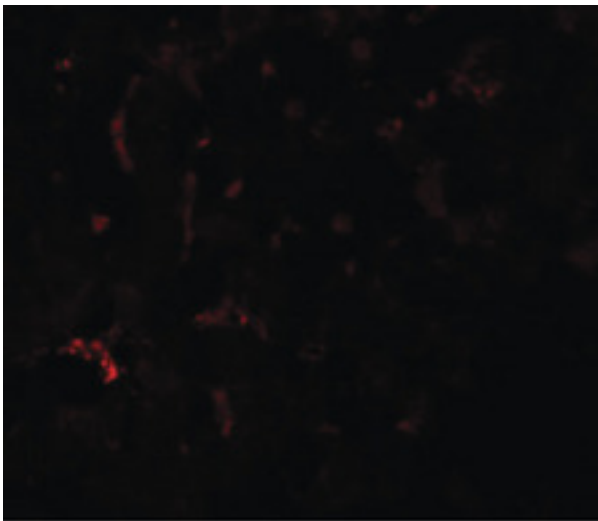
SUMO3 Rabbit anti-Human Polyclonal (C-Terminus) Antibody - LS-B4650 - LSBio	
<b>CatalogID:</b>	LS-B4650
<b>Validation:</b>	This antibody replaces catalog number LS-C108723. It has been validated for use in the following assays: IHC-P.
<b>Target:</b>	small ubiquitin-like modifier 3 (SUMO3)
<b>Synonyms:</b>	SUMO3 Antibody, SMT3A Antibody, SMT3 homolog 1 Antibody, Smt3B Antibody, SMT3H1 Antibody, SUMO-2 Antibody, SUMO-3 Antibody, Ubiquitin-like protein SMT3A Antibody, Ubiquitin-like protein SMT3B Antibody
<b>Host</b>	SUMO3 antibody was produced in Rabbit
<b>Clonality:</b>	Polyclonal
<b>Immunogen Species:</b>	SUMO3 antibody was raised against Human
<b>Antigen Type:</b>	Synthetic peptide
<b>Immunogen:</b>	SUMO3 antibody was raised against a 13 amino acid peptide near the carboxy terminus of human SUMO3.
<b>Specificity:</b>	Human SUMO3
<b>Epitope:</b>	C-Terminus
<b>Reactivity:</b>	Human, Mouse, Rat
<b>Purification:</b>	Immunoaffinity purified
<b>Presentation:</b>	PBS, 0.02% sodium azide
<b>Recommended Storage:</b>	Short term 4°C, long term aliquot and store at -20°C, avoid freeze thaw cycles. Store undiluted.
<b>Usage Summary:</b>	SUMO3 antibody can be used for detection of SUMO3 by Western blot at 1-2 ug/ml.
<b>Uses:</b>	IHC - Paraffin (5 µg/ml), Western blot (1 - 2 µg/ml), ELISA (Optimal dilution to be determined by the researcher)
<b>Size:</b>	50 µg
<b>Concentration:</b>	1 mg/ml

**Immunohistochemistry Image:**



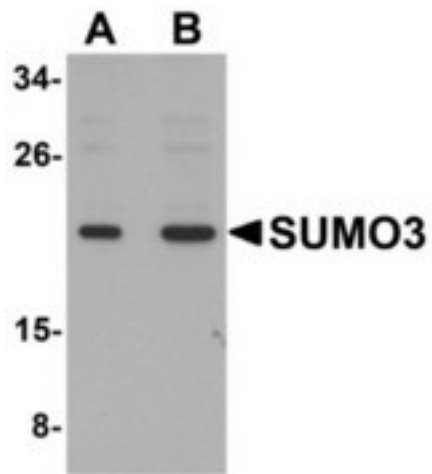
Anti-SUMO3 antibody IHC of human pancreas. Immunohistochemistry of formalin-fixed, paraffin-embedded tissue after heat-induced antigen retrieval. Antibody LS-B4650 concentration 5 ug/ml.

**Immunofluorescence Image:**



Immunofluorescence of SUMO3 in mouse liver tissue with SUMO3 antibody at 20 ug/ml.

**Western Blot Image:**



Western blot of SUMO3 in mouse liver tissue lysate with SUMO3 antibody at (A) and (B) 2 ug/ml.

**Requested From:**

Japan

Laboratory Reagent For In Vitro Research Use Only

Not for resale without prior written consent from LifeSpan BioSciences, Inc.

Created on 9/23/2014

© 2014 LifeSpan BioSciences