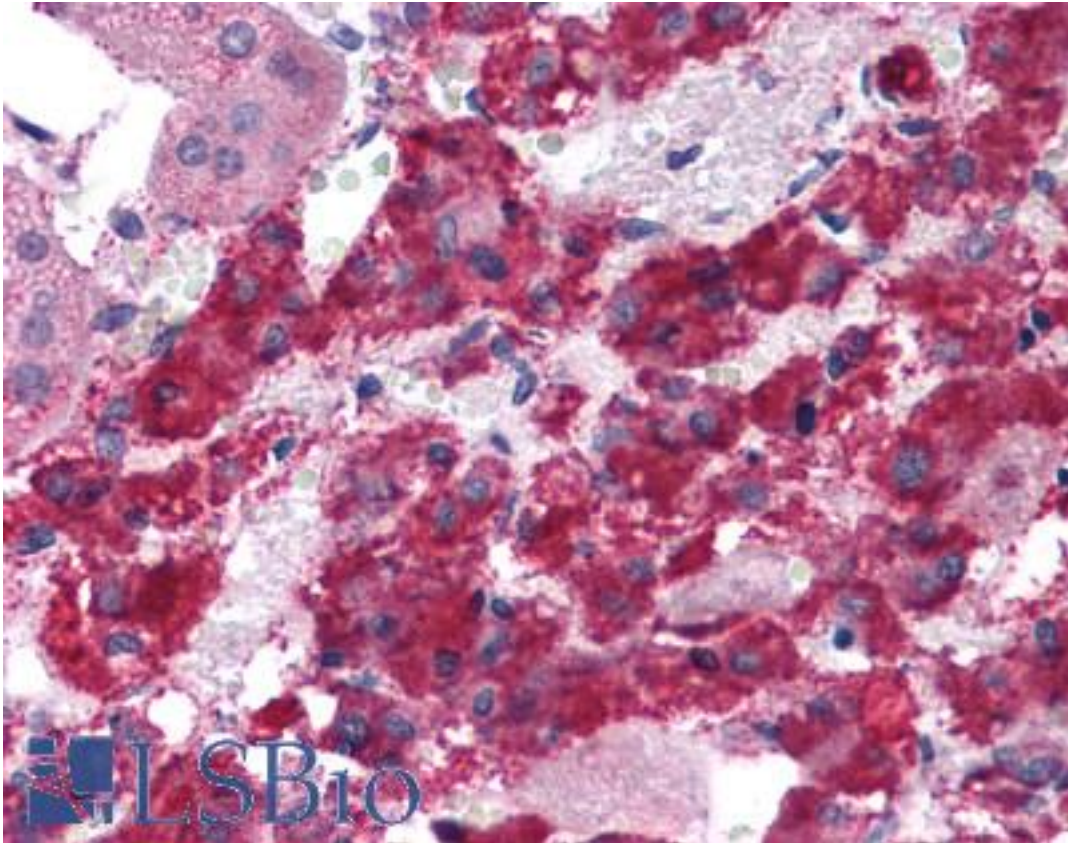


LYRM2 Rabbit anti-Human Polyclonal (C-Terminus) Antibody - LS-B4640 - LSBio

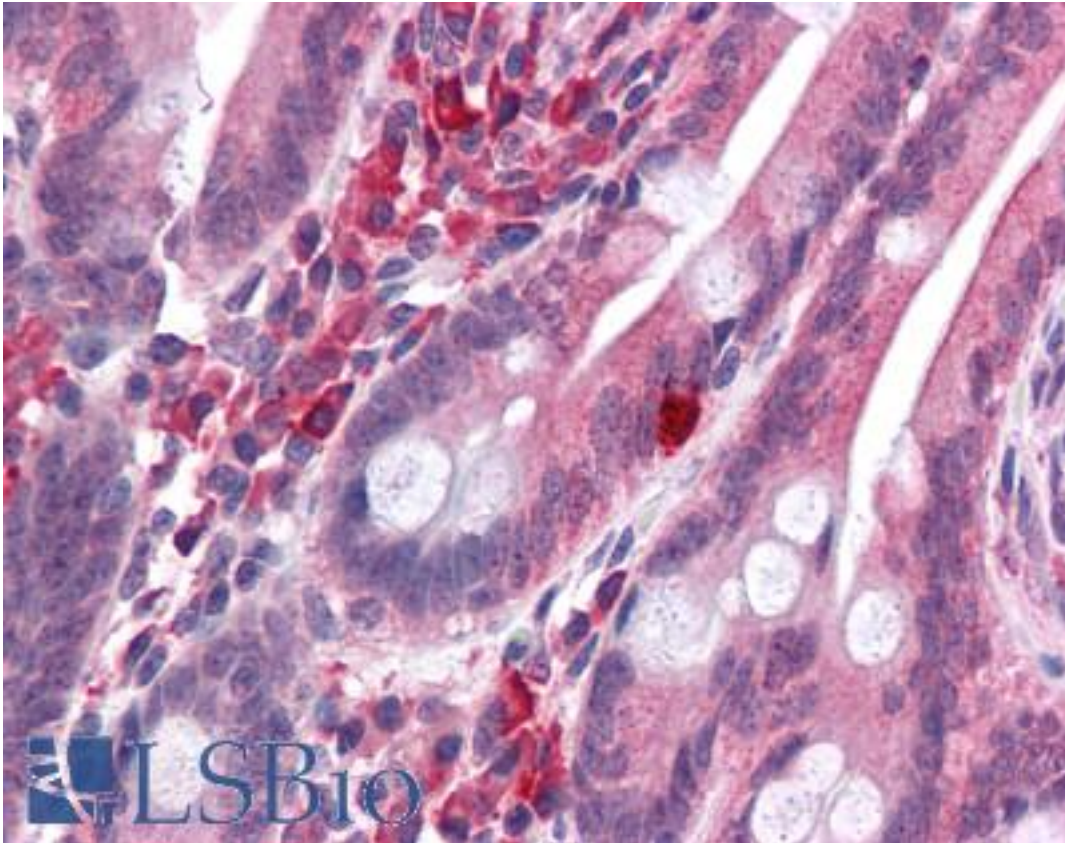
CatalogID:	LS-B4640
Validation:	This antibody replaces catalog number LS-C108684. It has been validated for use in the following assays: IHC-P.
Target:	LYR motif containing 2 (LYRM2)
Synonyms:	LYRM2 Antibody, DJ122O8.2 Antibody, LYR motif containing 2 Antibody, LYR motif-containing protein 2 Antibody
Host	LYRM2 antibody was produced in Rabbit
Clonality:	Polyclonal
Immunogen Species:	LYRM2 antibody was raised against Human
Antigen Type:	Synthetic peptide
Immunogen:	LYRM2 antibody was raised against a 16 amino acid peptide near the carboxy terminus of human LYRM2.
Specificity:	Human LYRM2
Epitope:	C-Terminus
Reactivity:	Human, Mouse, Rat
Purification:	Immunoaffinity purified
Presentation:	PBS, 0.02% sodium azide
Recommended Storage:	Short term 4°C, long term aliquot and store at -20°C, avoid freeze thaw cycles. Store undiluted.
Usage Summary:	LYRM2 antibody can be used for detection of LYRM2 by Western blot at 1-2 ug/ml.
Uses:	IHC - Paraffin (5 µg/ml), ICC, Western blot (1 - 2 µg/ml), ELISA (Optimal dilution to be determined by the researcher)
Size:	50 µg
Concentration:	1 mg/ml

Immunohistochemistry Image:



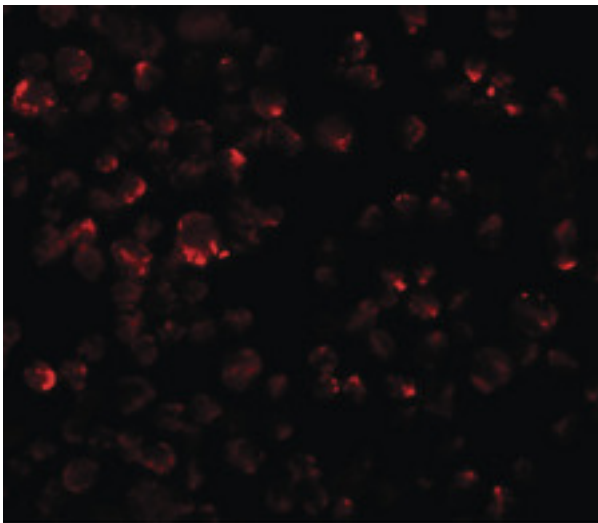
Anti-LYRM2 antibody IHC of human adrenal. Immunohistochemistry of formalin-fixed, paraffin-embedded tissue after heat-induced antigen retrieval. Antibody LS-B4640 concentration 5 ug/ml.

Immunohistochemistry Image:



Anti-LYRM2 antibody IHC of human small intestine. Immunohistochemistry of formalin-fixed, paraffin-embedded tissue after heat-induced antigen retrieval. Antibody LS-B4640 concentration 5 ug/ml.

Immunofluorescence Image:



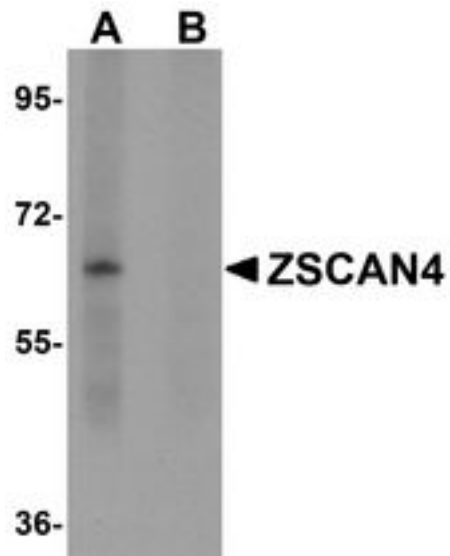
Immunofluorescence of LYRM2 in A549 cells with LYRM2 antibody at 20 ug/ml.

Immunocytochemistry Image:



Immunocytochemistry of LYRM2 in A549 cells with LYRM2 antibody at 20 ug/ml.

Western Blot Image:



Western blot analysis of ZSCAN4 in mouse lung tissue lysate with ZSCAN4 antibody in (A) the absence and (B) presence of peptide blocking.

Requested From:

Japan

Laboratory Reagent For In Vitro Research Use Only

Not for resale without prior written consent from LifeSpan BioSciences, Inc.

Created on 9/23/2014

© 2014 LifeSpan BioSciences