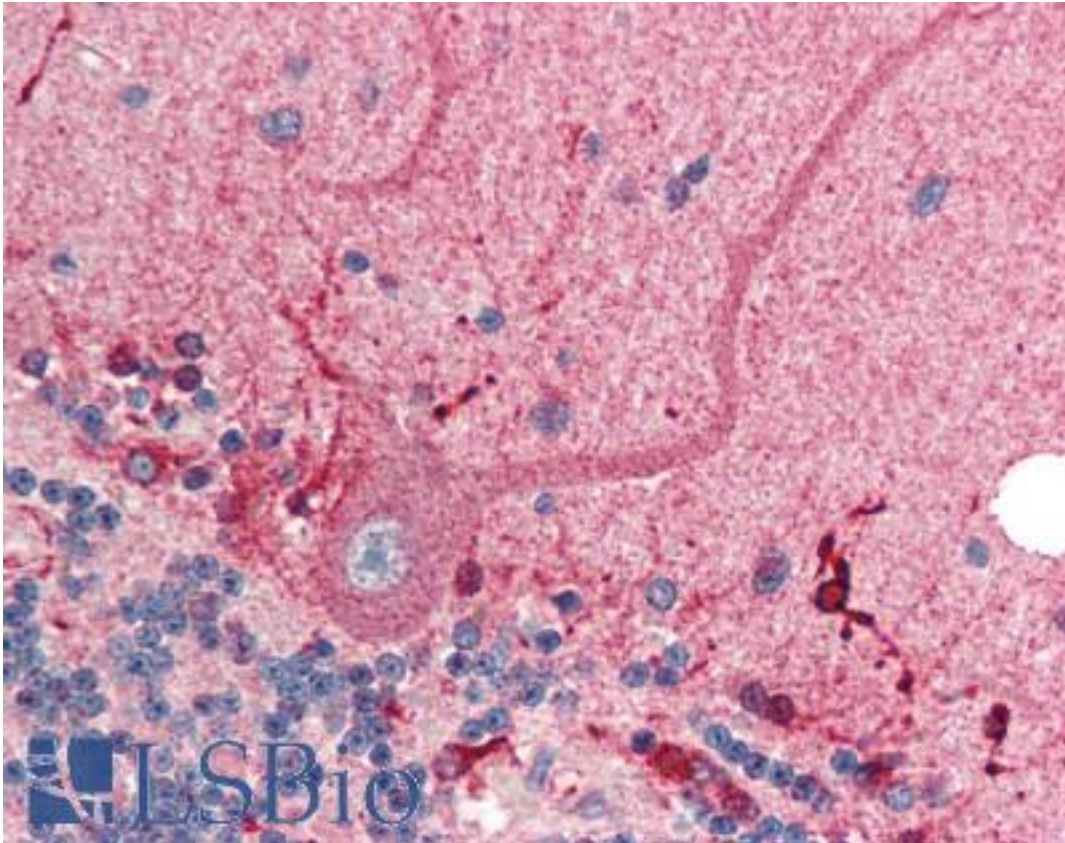


C1QTNF2 / CTRP2 Rabbit anti-Human Polyclonal (Internal) Antibody - LS-B464 - LSBio

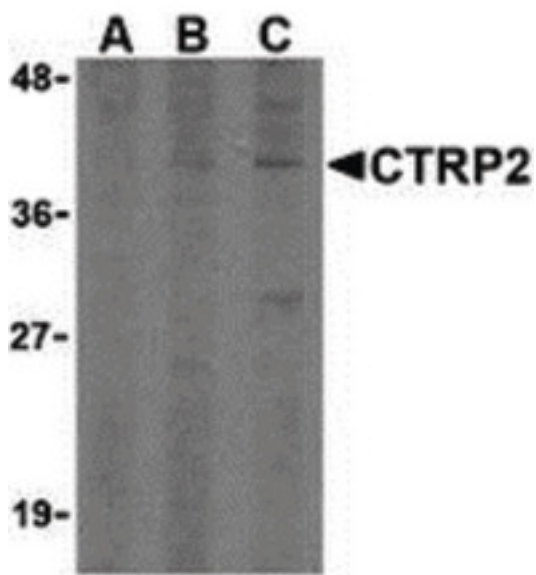
CatalogID:	LS-B464
Validation:	This antibody replaces catalog number LS-C19518. It has been validated for use in the following assays: IHC.
Target:	C1q and tumor necrosis factor related protein 2 (C1QTNF2)
Synonyms:	C1QTNF2 Antibody, Zacrp2 Antibody, CTRP2 Antibody
Host	C1QTNF2 antibody was produced in Rabbit
Clonality:	Polyclonal
Immunogen Species:	C1QTNF2 / CTRP2 antibody was raised against Human
Antigen Type:	Synthetic peptide
Immunogen:	C1QTNF2 / CTRP2 antibody was raised against synthetic peptide from human C1QTNF2 / CTRP2.
Specificity:	16 amino acid peptide from near the center of human CTRP2
Epitope:	Internal
Reactivity:	Human, Mouse
Purification:	Immunoaffinity purified
Presentation:	PBS, 0.02% sodium azide.
Recommended Storage:	Short term 4°C, long term aliquot and store at -20°C, avoid freeze thaw cycles. Store undiluted.
Usage Summary:	Immunohistochemistry: LS-B464 was validated for use in immunohistochemistry on a panel of 21 formalin-fixed, paraffin-embedded (FFPE) human tissues after heat induced antigen retrieval in pH 6.0 citrate buffer. After incubation with the primary antibody, slides were incubated with biotinylated secondary antibody, followed by alkaline phosphatase-streptavidin and chromogen. The stained slides were evaluated by a pathologist to confirm staining specificity. The optimal working concentration for LS-B464 was determined to be 5 ug/ml.
Uses:	IHC - Paraffin (5 µg/ml), Western blot (2 - 4 µg/ml) (Optimal dilution to be determined by the researcher)
Size:	50 µg
Concentration:	1 mg/ml

Immunohistochemistry Image:



Anti-C1QTNF2 / CTRP2 antibody IHC of human brain, cerebellum. Immunohistochemistry of formalin-fixed, paraffin-embedded tissue after heat-induced antigen retrieval. Antibody LS-B464 concentration 5 ug/ml.

Western Blot Image:



Western blot of CTRP2 in 3T3 (Balb) cell lysate with CTRP2 (IN) antibody at (A) 1, (B) 2, and (C) 4 ug/ml.

Requested From:	Japan
Laboratory Reagent For In Vitro Research Use Only	
Not for resale without prior written consent from LifeSpan BioSciences, Inc.	
Created on 9/23/2014	
© 2014 LifeSpan BioSciences	