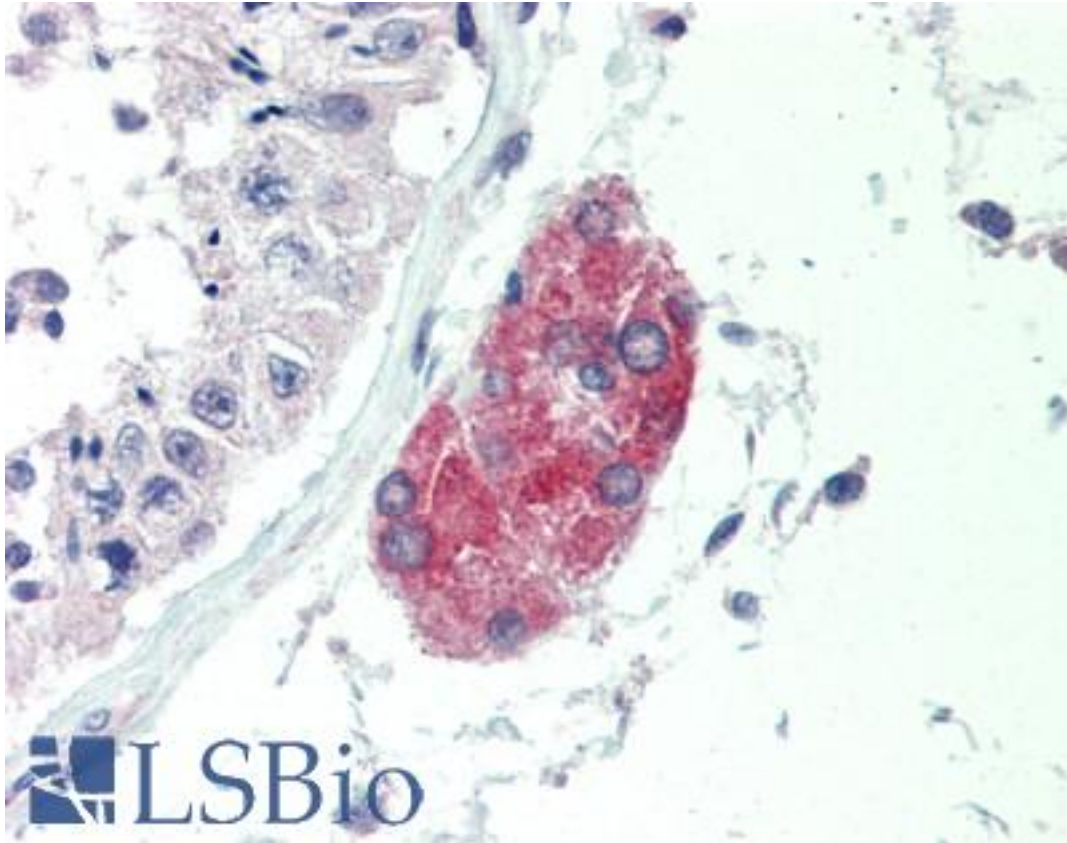


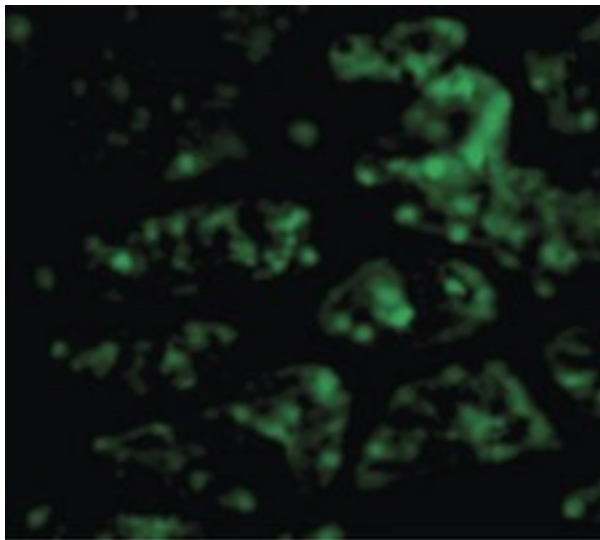
C1QTNF1 / CTRP1 Rabbit anti-Human Polyclonal (N-Terminus) Antibody - LS-B463 - LSBio	
CatalogID:	LS-B463
Validation:	This antibody replaces catalog number LS-C19517. It has been validated for use in the following assays: IHC.
Target:	C1q and tumor necrosis factor related protein 1 (C1QTNF1)
Synonyms:	C1QTNF1 Antibody, CTRP1 Antibody, ZSIG37 Antibody
Host	C1QTNF1 antibody was produced in Rabbit
Clonality:	Polyclonal
Immunogen Species:	C1QTNF1 / CTRP1 antibody was raised against Human
Antigen Type:	Synthetic peptide
Immunogen:	C1QTNF1 / CTRP1 antibody was raised against synthetic peptide from human C1QTNF1 / CTRP1.
Specificity:	15 amino acid peptide from near the amino-terminus of human CTRP1
Epitope:	N-Terminus
Reactivity:	Human, Mouse, Rat
Purification:	Immunoaffinity purified
Presentation:	PBS, 0.02% sodium azide.
Recommended Storage:	Short term 4°C, long term aliquot and store at -20°C, avoid freeze thaw cycles. Store undiluted.
Usage Summary:	Immunohistochemistry: LS-B463 was validated for use in immunohistochemistry on a panel of 21 formalin-fixed, paraffin-embedded (FFPE) human tissues after heat induced antigen retrieval in pH 6.0 citrate buffer. After incubation with the primary antibody, slides were incubated with biotinylated secondary antibody, followed by alkaline phosphatase-streptavidin and chromogen. The stained slides were evaluated by a pathologist to confirm staining specificity. The optimal working concentration for LS-B463 was determined to be 10 ug/ml.
Uses:	IHC - Paraffin (10 µg/ml), Western blot (1 µg/ml) (Optimal dilution to be determined by the researcher)
Size:	50 µg
Concentration:	1 mg/ml

Immunohistochemistry Image:



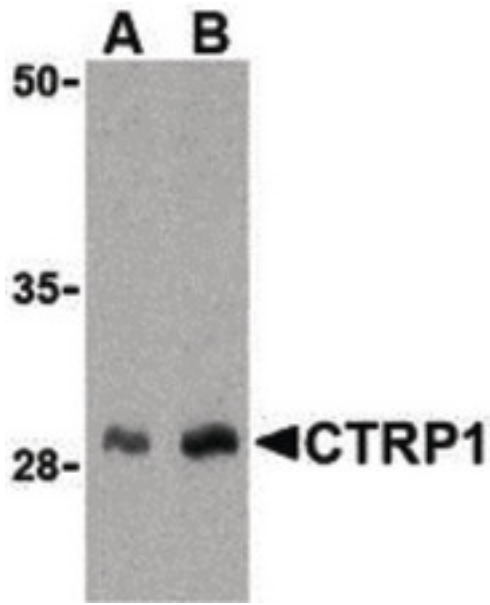
Anti-C1QTNF1 / CTRP1 antibody IHC of human testis. Immunohistochemistry of formalin-fixed, paraffin-embedded tissue after heat-induced antigen retrieval. Antibody LS-B463 concentration 10 ug/ml.

Immunofluorescence Image:



Immunofluorescence of CTRP1 in Human Kidney cells with CTRP1 antibody at 20 ug/ml.

Western Blot Image:



Western blot of CTRP1 in human kidney cell lysate with CTRP1 antibody at (A) 1 and (B) 2 ug/ml.

Requested From:

Japan

Laboratory Reagent For In Vitro Research Use Only

Not for resale without prior written consent from LifeSpan BioSciences, Inc.

Created on 9/23/2014

© 2014 LifeSpan BioSciences