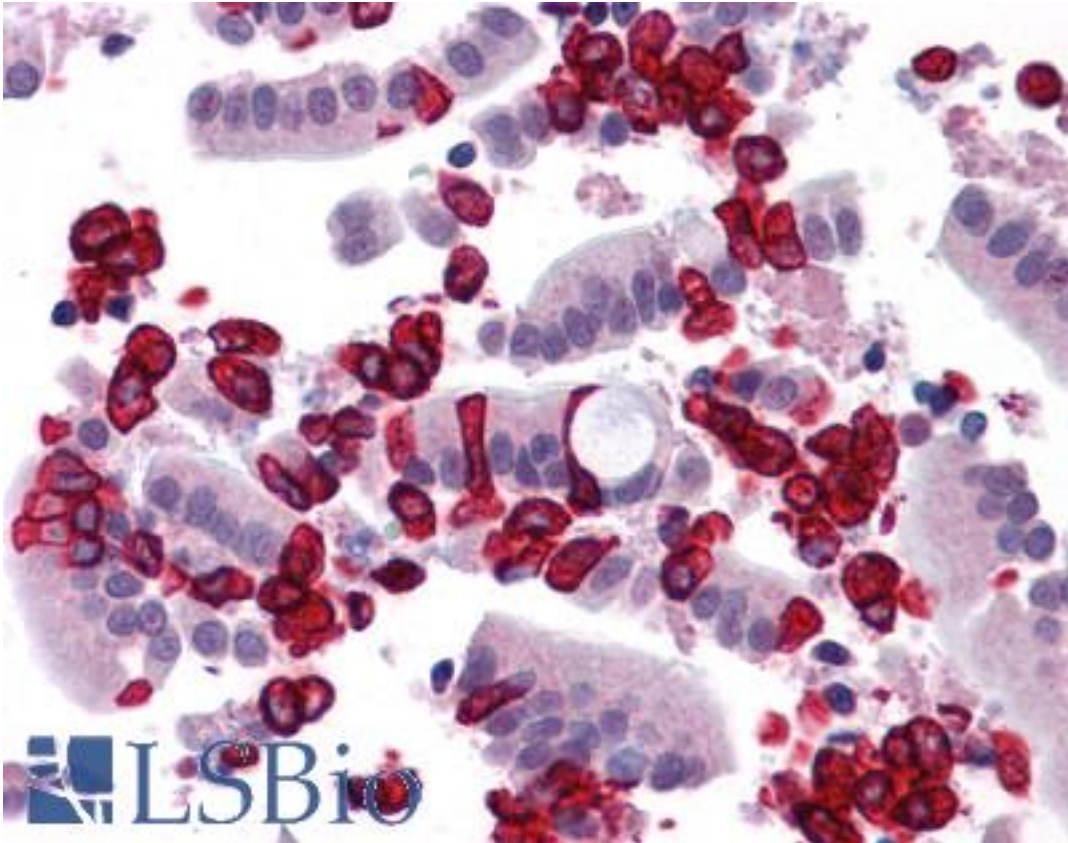


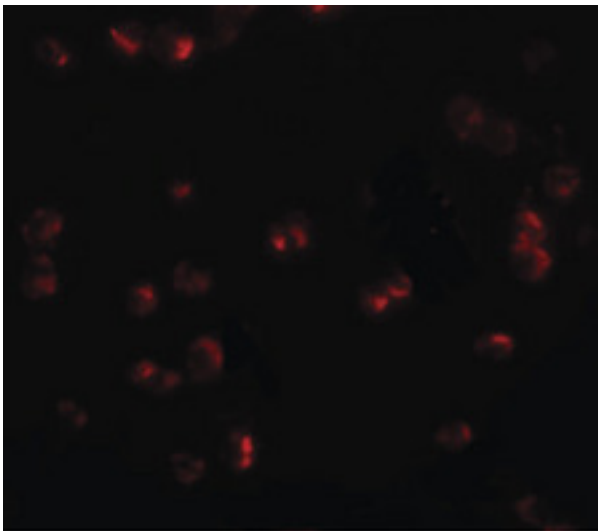
CHORDC1 / CHP1 Rabbit anti-Human Polyclonal (N-Terminus) Antibody - LS-B4627 - LSBio	
CatalogID:	LS-B4627
Validation:	This antibody replaces catalog number LS-C108537. It has been validated for use in the following assays: IHC-P.
Target:	cysteine and histidine-rich domain (CHORD) containing 1 (CHORDC1)
Synonyms:	CHORDC1 Antibody, CHORD-containing protein 1 Antibody, CHP-1 Antibody, Protein morgana Antibody
Host	CHORDC1 antibody was produced in Rabbit
Clonality:	Polyclonal
Immunogen Species:	CHORDC1 / CHP1 antibody was raised against Human
Antigen Type:	Synthetic peptide
Immunogen:	CHORDC1 / CHP1 antibody was raised against a 21 amino acid peptide near the amino terminus of human CHORDC1.
Specificity:	Human CHORDC1
Epitope:	N-Terminus
Reactivity:	Human, Mouse, Rat
Purification:	Immunoaffinity purified
Presentation:	PBS, 0.02% sodium azide
Recommended Storage:	Short term 4°C, long term aliquot and store at -20°C, avoid freeze thaw cycles. Store undiluted.
Usage Summary:	CHORDC1 antibody can be used for detection of CHORDC1 by Western blot at 1-2 ug/ml.
Uses:	IHC - Paraffin (5 µg/ml), ICC, Western blot (1 - 2 µg/ml), ELISA (Optimal dilution to be determined by the researcher)
Size:	50 µg
Concentration:	1 mg/ml

Immunohistochemistry Image:



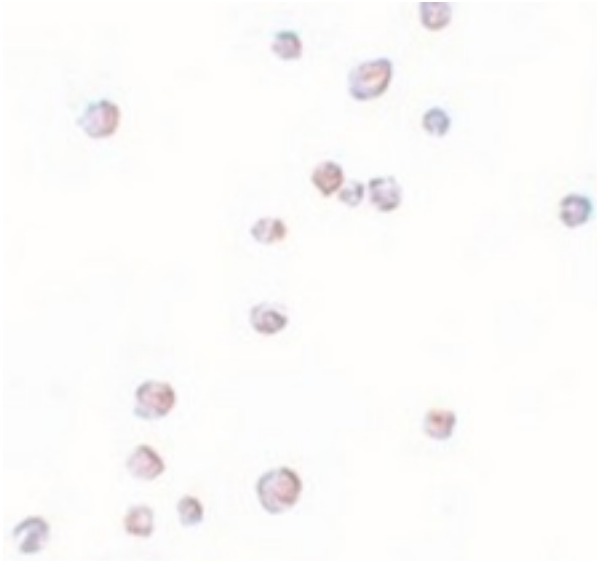
Anti-CHORDC1 antibody IHC of human small intestine. Immunohistochemistry of formalin-fixed, paraffin-embedded tissue after heat-induced antigen retrieval. Antibody LS-B4627 concentration 5 ug/ml.

Immunofluorescence Image:



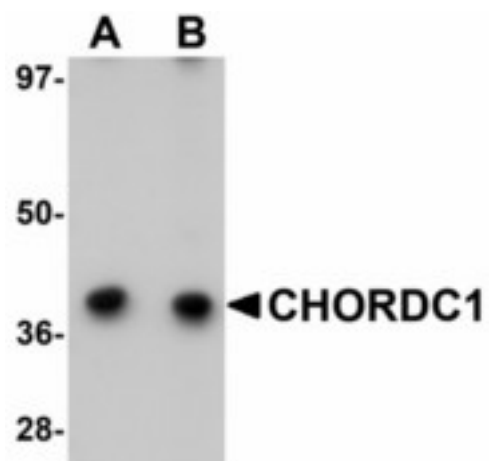
Immunofluorescence of CHORDC1 in 293 cells with CHORDC1 antibody at 20 ug/ml.

Immunocytochemistry Image:



Immunocytochemistry of CHORDC1 in 293 cells with CHORDC1 antibody at 2.5 ug/ml.

Western Blot Image:



Western blot of CHORDC1 in 293 cell lysate with CHORDC1 antibody at (A) 1 and (B) 2 ug/ml.

Requested From:

Japan

Laboratory Reagent For In Vitro Research Use Only

Not for resale without prior written consent from LifeSpan BioSciences, Inc.

Created on 9/23/2014

© 2014 LifeSpan BioSciences