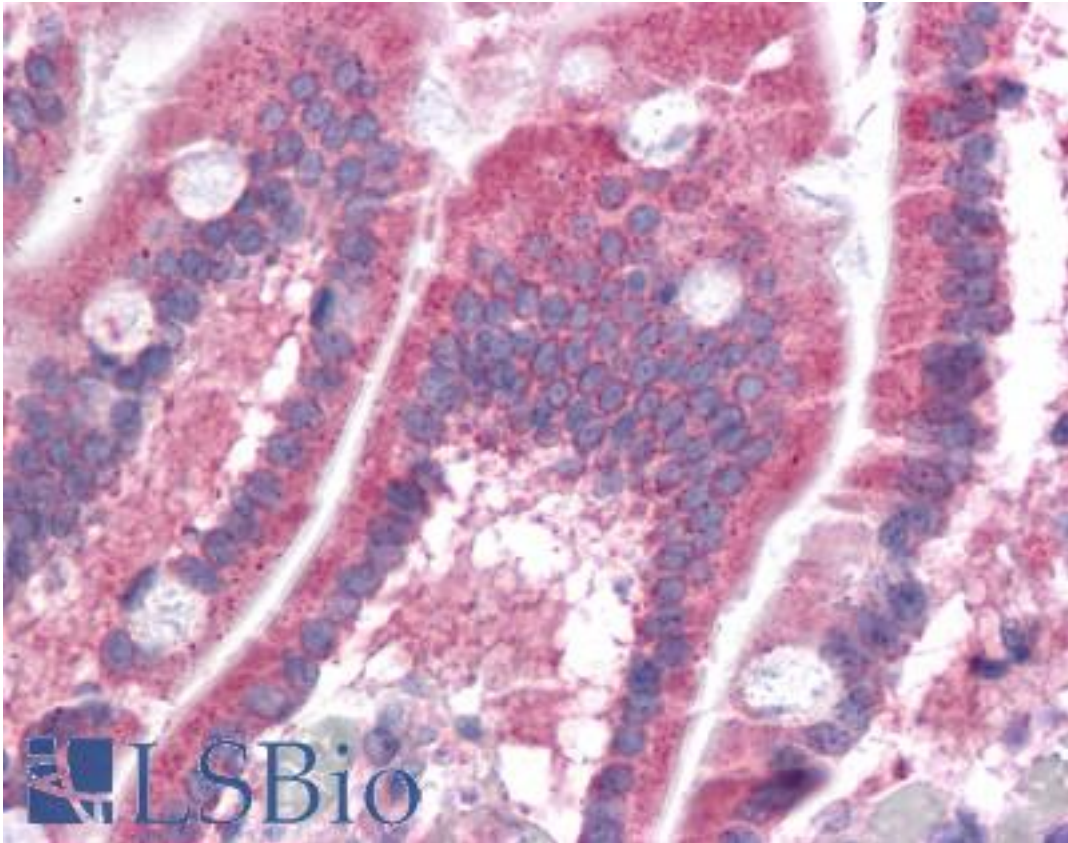


DPPL1 / PPAPDC1B Rabbit anti-Human Polyclonal (N-Terminus) Antibody - LS-B4624 - LSBio

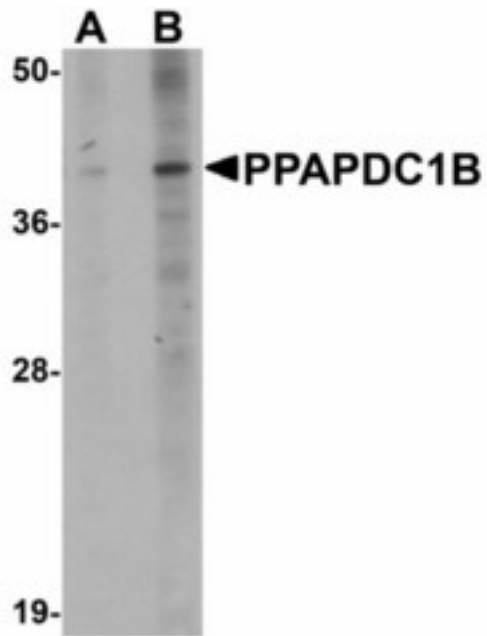
CatalogID:	LS-B4624
Validation:	This antibody replaces catalog number LS-C108634. It has been validated for use in the following assays: IHC-P.
Target:	phosphatidic acid phosphatase type 2 domain containing 1B (PPAPDC1B)
Synonyms:	PPAPDC1B Antibody, HTPAP Antibody, DPPL1 Antibody
Host	PPAPDC1B antibody was produced in Rabbit
Clonality:	Polyclonal
Immunogen Species:	DPPL1 / PPAPDC1B antibody was raised against Human
Antigen Type:	Synthetic peptide
Immunogen:	DPPL1 / PPAPDC1B antibody was raised against a 14 amino acid peptide near the amino terminus of human PPAPDC1B.
Specificity:	Human PPAPDC1B
Epitope:	N-Terminus
Reactivity:	Human, Mouse
Purification:	Immunoaffinity purified
Presentation:	PBS, 0.02% sodium azide
Recommended Storage:	Short term 4°C, long term aliquot and store at -20°C, avoid freeze thaw cycles. Store undiluted.
Usage Summary:	PPAPDC1B antibody can be used for detection of PPAPDC1B by Western blot at 1 -2 ug/ml.
Uses:	IHC - Paraffin (5 µg/ml), Western blot (1 - 2 µg/ml), ELISA (Optimal dilution to be determined by the researcher)
Size:	50 µg
Concentration:	1 mg/ml

Immunohistochemistry Image:



Anti-PPAPDC1B antibody IHC of human small intestine. Immunohistochemistry of formalin-fixed, paraffin-embedded tissue after heat-induced antigen retrieval. Antibody LS-B4624 concentration 5 ug/ml.

Western Blot Image:



Western blot of PPAPDC1B in EL4 cell lysate with PPAPDC1B antibody at (A) 1 and (B) 2 ug/ml.

Requested From:

Japan

Laboratory Reagent For In Vitro Research Use Only

Not for resale without prior written consent from LifeSpan BioSciences, Inc.

Created on 9/23/2014

© 2014 LifeSpan BioSciences