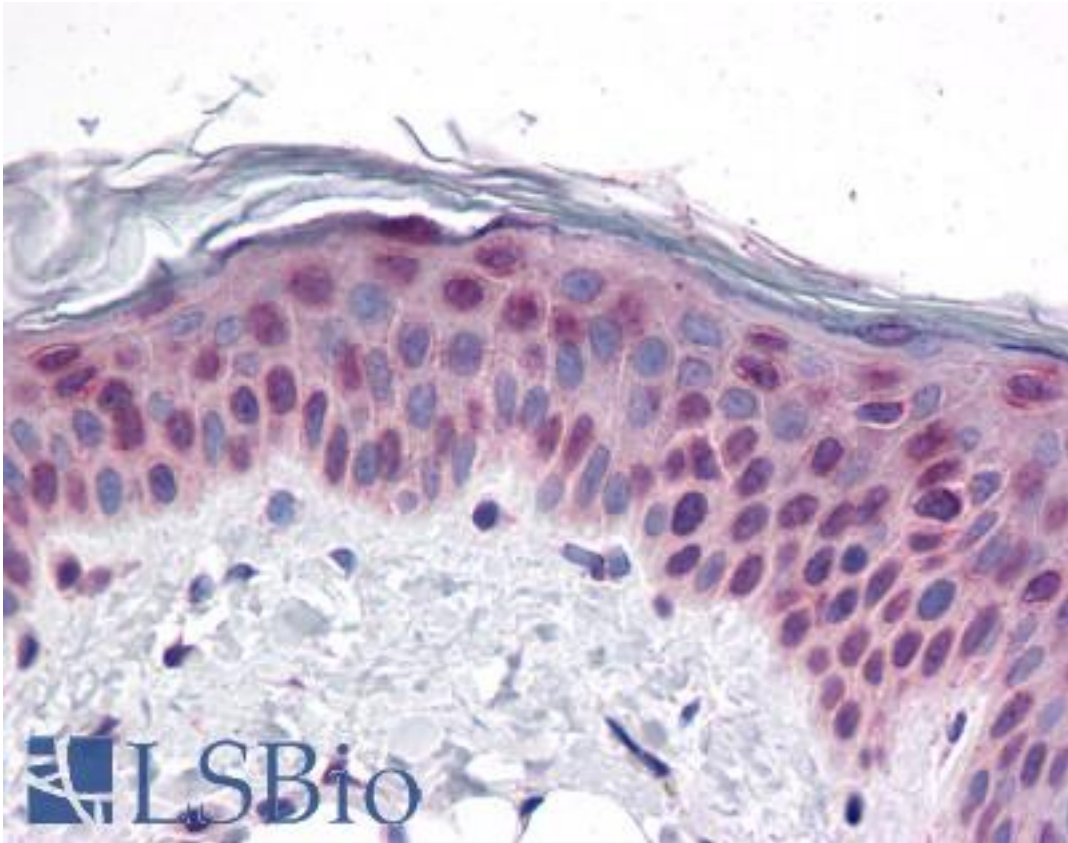


CCDC47 Rabbit anti-Human Polyclonal (C-Terminus) Antibody - LS-B4623 - LSBio

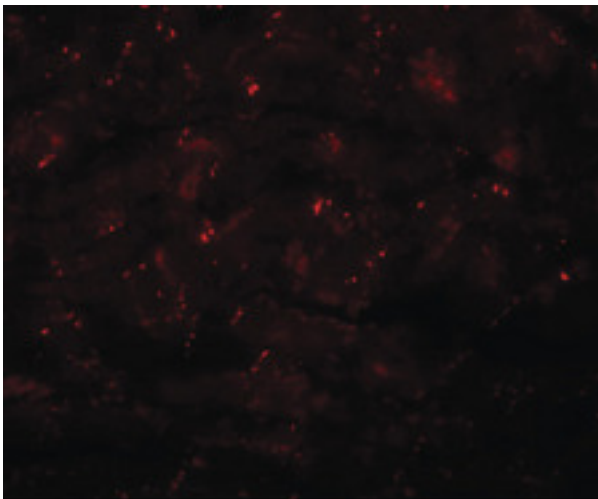
CatalogID:	LS-B4623
Validation:	This antibody replaces catalog number LS-C108632. It has been validated for use in the following assays: IHC-P.
Target:	coiled-coil domain containing 47 (CCDC47)
Synonyms:	CCDC47 Antibody, MSTP041 Antibody, GK001 Antibody
Host	CCDC47 antibody was produced in Rabbit
Clonality:	Polyclonal
Immunogen Species:	CCDC47 antibody was raised against Human
Antigen Type:	Synthetic peptide
Immunogen:	CCDC47 antibody was raised against a 16 amino acid peptide from near the carboxy terminus of human CCDC47.
Specificity:	Human CCDC47
Epitope:	C-Terminus
Reactivity:	Human, Mouse
Purification:	Immunoaffinity purified
Presentation:	PBS, 0.02% sodium azide
Recommended Storage:	Short term 4°C, long term aliquot and store at -20°C, avoid freeze thaw cycles. Store undiluted.
Usage Summary:	CCDC47 antibody can be used for detection of CCDC47 by Western blot at 1-2 ug/ml.
Uses:	IHC - Paraffin (5 µg/ml), Western blot (1 - 2 µg/ml), ELISA (Optimal dilution to be determined by the researcher)
Size:	50 µg
Concentration:	1 mg/ml

Immunohistochemistry Image:



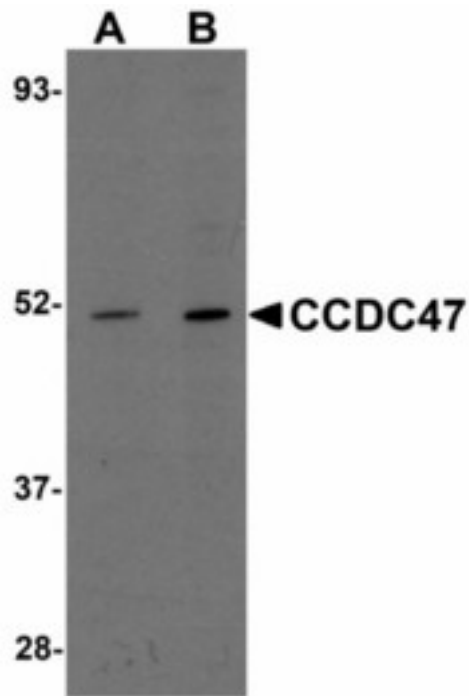
Anti-CCDC47 antibody IHC of human skin. Immunohistochemistry of formalin-fixed, paraffin-embedded tissue after heat-induced antigen retrieval. Antibody LS-B4623 concentration 5 ug/ml.

Immunofluorescence Image:



Immunofluorescence of CDCC47 in mouse heart tissue with CDCC47 antibody at 20 ug/ml.

Western Blot Image:



Western blot of CCDC47 in mouse heart tissue lysate with CCDC47 antibody at (A) 1 and (B) 2 ug/ml.

Requested From:

Japan

Laboratory Reagent For In Vitro Research Use Only

Not for resale without prior written consent from LifeSpan BioSciences, Inc.

Created on 9/23/2014

© 2014 LifeSpan BioSciences