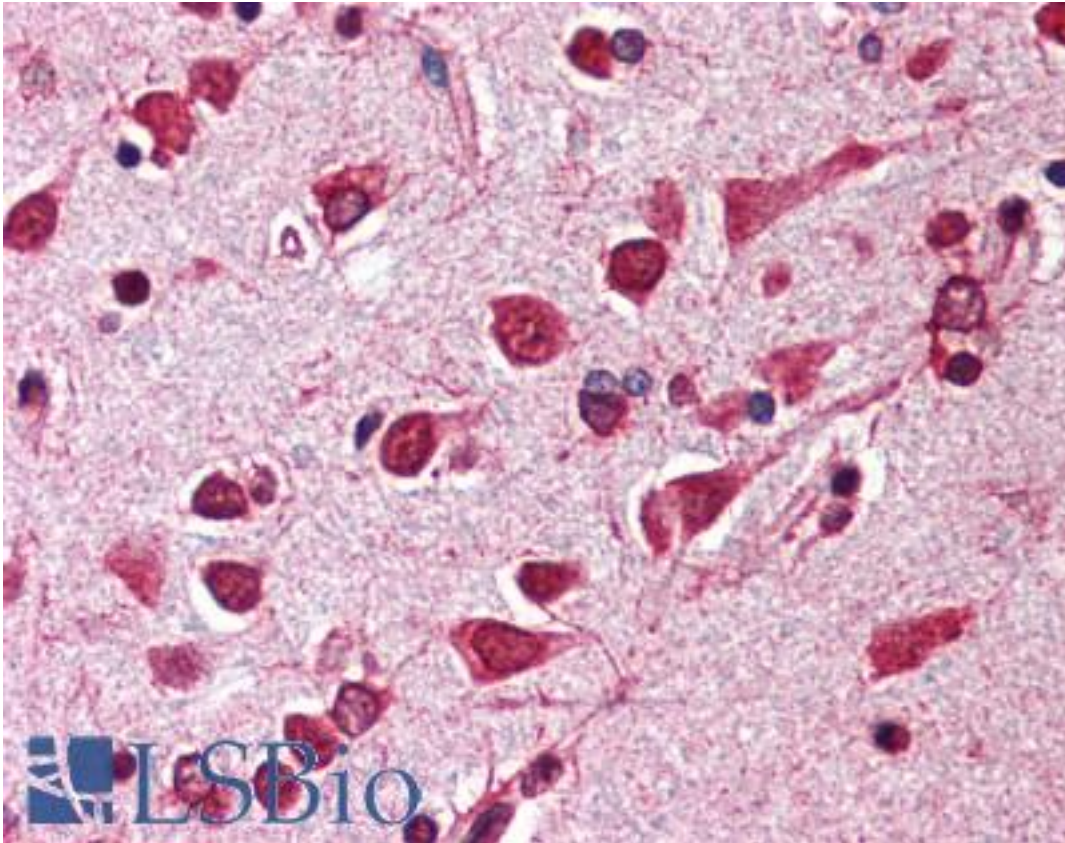


ARL6IP1 / ARMER Rabbit anti-Human Polyclonal (C-Terminus) Antibody - LS-B460 - LSBio

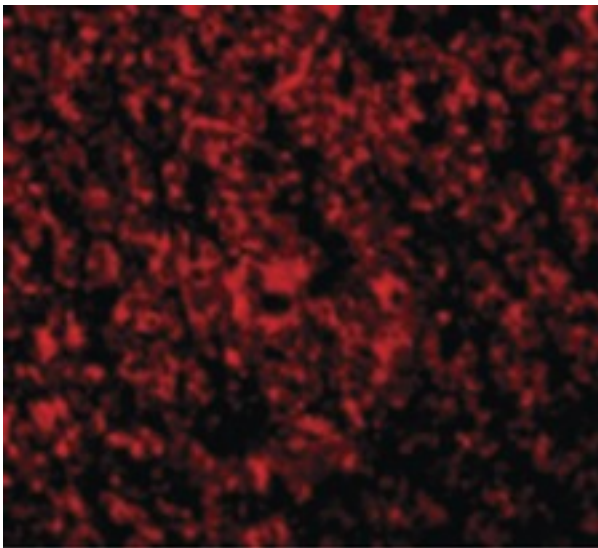
<b>CatalogID:</b>	LS-B460
<b>Validation:</b>	This antibody replaces catalog number LS-C364. It has been validated for use in the following assays: IHC.
<b>Target:</b>	ADP-ribosylation factor-like 6 interacting protein 1 (ARL6IP1)
<b>Synonyms:</b>	ARL6IP1 Antibody, AIP1 Antibody, ARL-6-interacting protein 1 Antibody, ARL6IP Antibody, ARMER Antibody, AIP-1 Antibody, KIAA0069 Antibody
<b>Family / Subfamily:</b>	Apoptosis / Not assigned-Other
<b>Host</b>	ARL6IP1 antibody was produced in Rabbit
<b>Clonality:</b>	Polyclonal
<b>Immunogen Species:</b>	ARL6IP1 / ARMER antibody was raised against Human
<b>Antigen Type:</b>	Synthetic peptide
<b>Immunogen:</b>	ARL6IP1 / ARMER antibody was raised against synthetic peptide from human ARL6IP1 / ARMER.
<b>Specificity:</b>	peptide corresponding to 15 amino acids near the C-terminus of human ARMER
<b>Epitope:</b>	C-Terminus
<b>Reactivity:</b>	Human, Mouse
<b>Purification:</b>	Ion exchange chromatography
<b>Presentation:</b>	PBS, 0.02% sodium azide.
<b>Recommended Storage:</b>	Short term 4°C, long term aliquot and store at -20°C, avoid freeze thaw cycles. Store undiluted.
<b>Usage Summary:</b>	Immunohistochemistry: LS-B460 was validated for use in immunohistochemistry on a panel of 21 formalin-fixed, paraffin-embedded (FFPE) human tissues after heat induced antigen retrieval in pH 6.0 citrate buffer. After incubation with the primary antibody, slides were incubated with biotinylated secondary antibody, followed by alkaline phosphatase-streptavidin and chromogen. The stained slides were evaluated by a pathologist to confirm staining specificity. The optimal working concentration for LS-B460 was determined to be 2.5 ug/ml.
<b>Uses:</b>	IHC - Paraffin (2.5 µg/ml), Western blot (0.5 - 2 µg/ml) (Optimal dilution to be determined by the researcher)
<b>Size:</b>	50 µg
<b>Concentration:</b>	1 mg/ml

**Immunohistochemistry Image:**



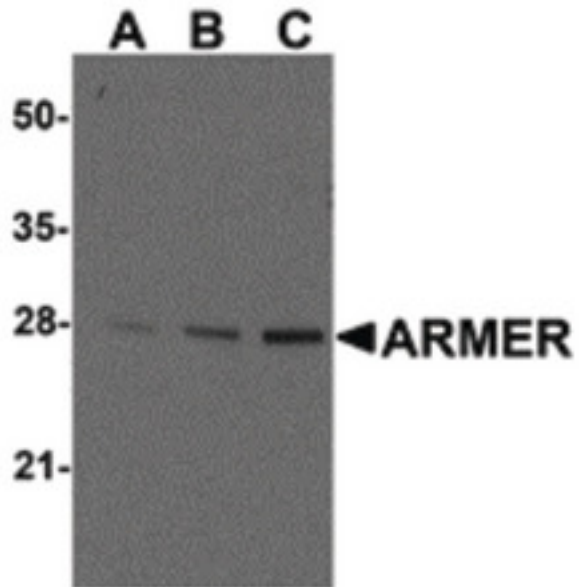
Anti-ARL6IP1 / ARMER antibody IHC of human brain, cortex. Immunohistochemistry of formalin-fixed, paraffin-embedded tissue after heat-induced antigen retrieval. Antibody LS-B460 concentration 5 ug/ml.

**Immunofluorescence Image:**



Immunofluorescence of ARMER in Mouse Intestine cells with ARMER antibody at 2 ug/ml.

**Western Blot Image:**



Western blot ana-lysis of ARMER in mouse small intestine tissue lysates with ARMER antibody at (A) 0.5, (B) 1, and (C) 2 ug/ml.

**Requested From:**

Japan

Laboratory Reagent For In Vitro Research Use Only

Not for resale without prior written consent from LifeSpan BioSciences, Inc.

Created on 9/23/2014

© 2014 LifeSpan BioSciences