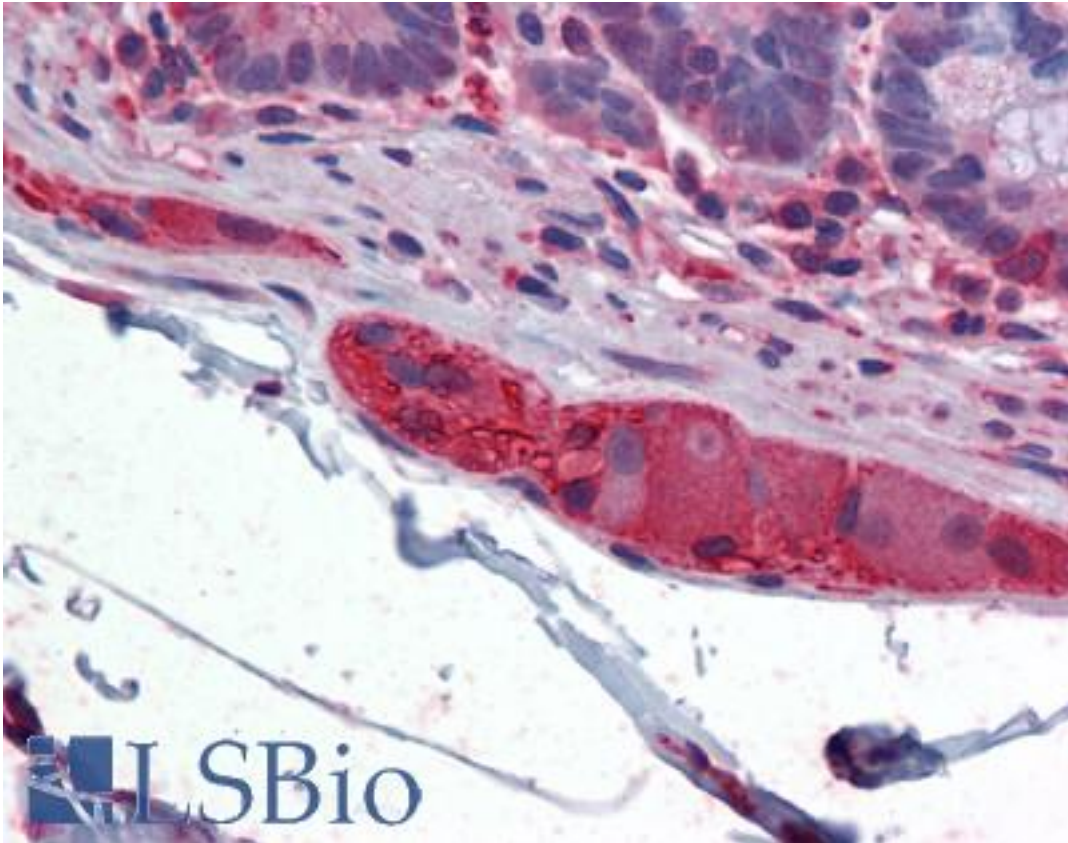


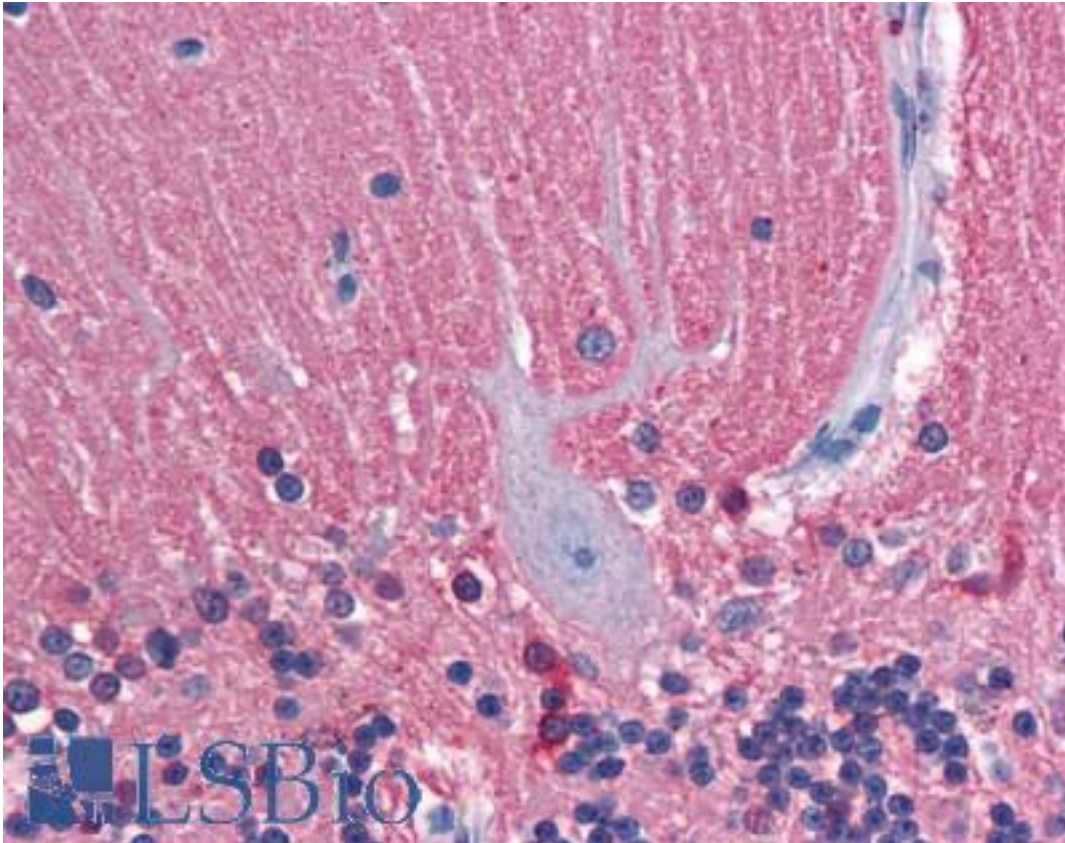
TUBB2A / Tubulin Beta 2A Mouse anti-Human Monoclonal (2B2) Antibody - LS-B4554 - LSBio	
CatalogID:	LS-B4554
Validation:	This antibody replaces catalog number LS-C105049. It has been validated for use in the following assays: IHC-P.
Target:	tubulin, beta 2A class IIa (TUBB2A)
Synonyms:	TUBB2A Antibody, Class IIa beta-tubulin Antibody, DJ40E16.7 Antibody, TUBB2 Antibody, Tubulin beta-2A chain Antibody, Tubulin, beta 2 Antibody, Tubulin, beta 2A Antibody, Tubulin, beta 2A class IIa Antibody, Beta-Tubulin Antibody, Tubulin beta-2 chain Antibody, Tubulin, beta polypeptide 2 Antibody, Tubulin, beta polypeptide Antibody
Family / Subfamily:	Tubulin
Host	TUBB2A antibody was produced in Mouse
Clonality:	Monoclonal
Isotype:	IgG2a,k
Clone Name:	2B2
Immunogen Species:	TUBB2A / Tubulin Beta 2A antibody was raised against Human
Antigen Type:	Recombinant protein
Immunogen:	TUBB2A / Tubulin Beta 2A antibody was raised against tUBB2A (AAH01194, 1 a.a. ~ 446 a.a) full-length recombinant protein with GST tag. MW of the GST tag alone is 26 KDa.
Reactivity:	Human, Mouse, Rat
Purification:	Protein A purified
Presentation:	PBS, pH 7.2
Recommended Storage:	Store at -20°C. Aliquot to avoid freeze/thaw cycles.
Usage Summary:	Western Blot (Cell lysate) - positive control PC-12. Western Blot (Cell lysate) - positive control Raw 264. Western Blot (Cell lysate) - positive control Jurkat. Western Blot (Cell lysate) - positive control NIH/3T3. Western Blot (Transfected lysate) - positive control transfected 293T cell line.
Uses:	IHC - Paraffin (5 µg/ml), Western blot, ELISA (Optimal dilution to be determined by the researcher)
Size:	50 µg

Immunohistochemistry Image:



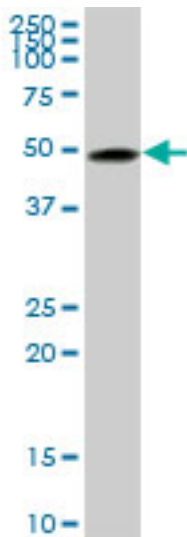
Anti-TUBB2A antibody IHC of human small intestine, submucosal plexus.
Immunohistochemistry of formalin-fixed, paraffin-embedded tissue after heat-induced antigen retrieval. Antibody LS-B4554 concentration 5 ug/ml.

Immunohistochemistry Image:



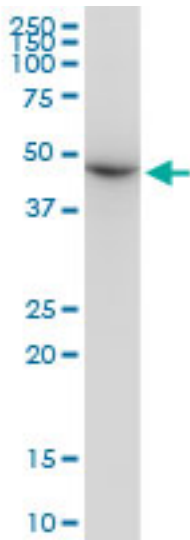
Anti-TUBB2A antibody IHC of human brain, cerebellum. Immunohistochemistry of formalin-fixed, paraffin-embedded tissue after heat-induced antigen retrieval. Antibody LS-B4554 concentration 5 ug/ml.

Western Blot Image:



TUBB2A monoclonal antibody, clone 2B2. Western blot of TUBB2A expression in Jurkat.

Western Blot Image:



TUBB2A monoclonal antibody, clone 2B2. Western blot of TUBB2A expression in NIH/3T3.

Requested From:

Japan

Laboratory Reagent For In Vitro Research Use Only

Not for resale without prior written consent from LifeSpan BioSciences, Inc.

Created on 9/23/2014

© 2014 LifeSpan BioSciences