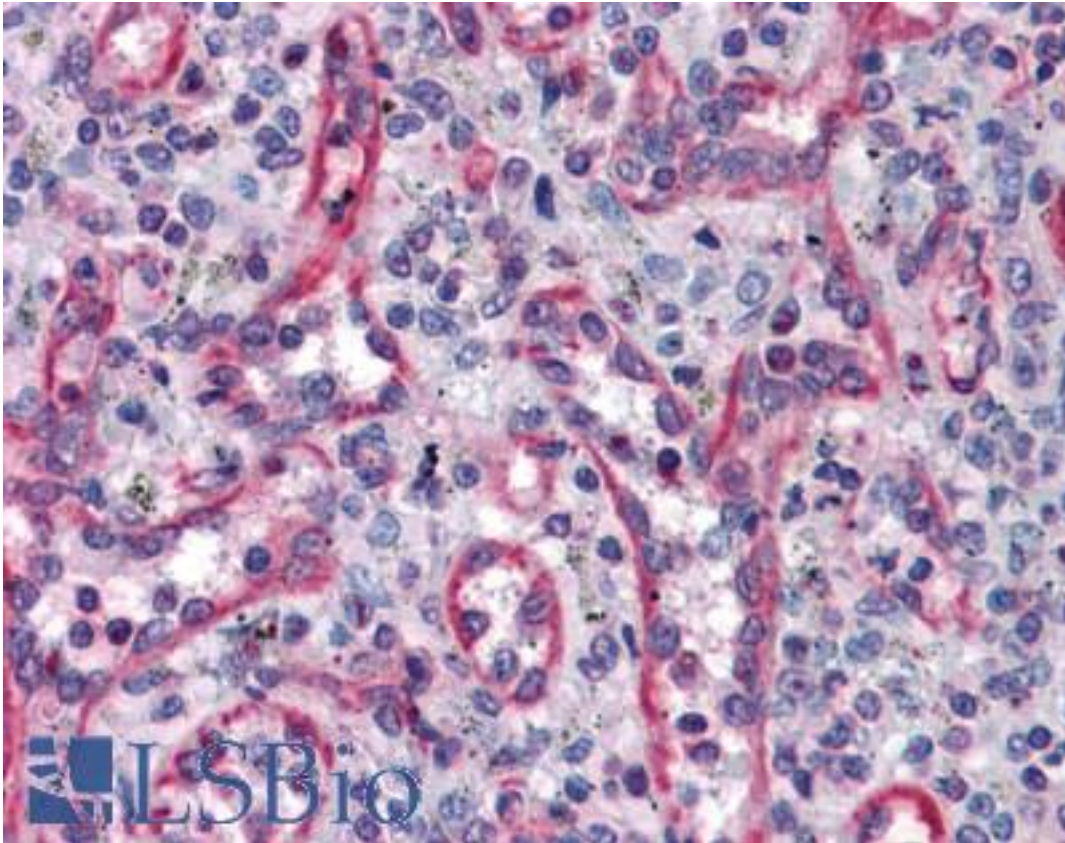


**TUBA4A / TUBA1 Mouse anti-Human Monoclonal (2E11) Antibody - LS-B4552 - LSBio**

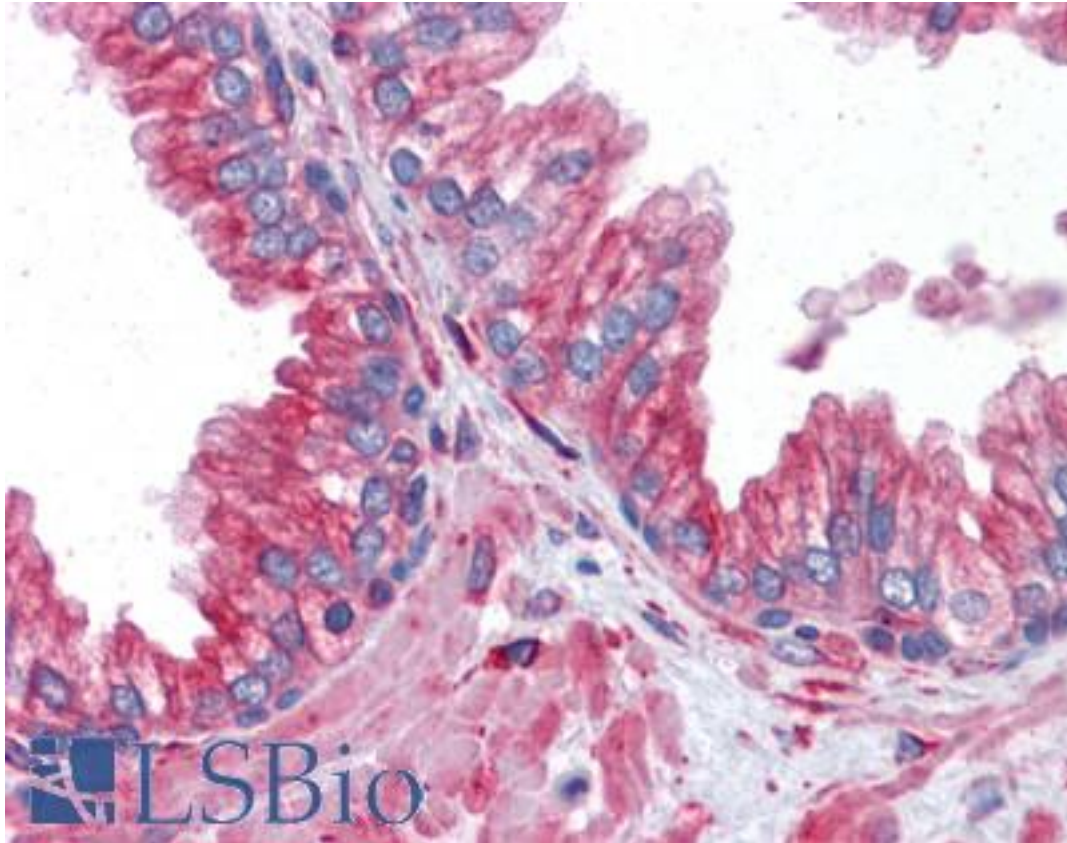
<b>CatalogID:</b>	LS-B4552
<b>Validation:</b>	This antibody replaces catalog number LS-C105047. It has been validated for use in the following assays: IHC-P.
<b>Target:</b>	tubulin, alpha 4a (TUBA4A)
<b>Synonyms:</b>	TUBA4A Antibody, Alpha-tubulin 1 Antibody, TUBA1 Antibody, Testis-specific alpha-tubulin Antibody, Tubulin, alpha 4a Antibody, H2-ALPHA Antibody, Tubulin alpha-1 chain Antibody, Tubulin alpha-4 chain Antibody, Tubulin alpha-4A chain Antibody, Tubulin H2-alpha Antibody, Tubulin, alpha 1 Antibody
<b>Host</b>	TUBA4A antibody was produced in Mouse
<b>Clonality:</b>	Monoclonal
<b>Isotype:</b>	IgG2b,k
<b>Clone Name:</b>	2E11
<b>Immunogen Species:</b>	TUBA4A / TUBA1 antibody was raised against Human
<b>Antigen Type:</b>	Recombinant protein
<b>Immunogen:</b>	TUBA4A / TUBA1 antibody was raised against tUBA1 (AAH09238, 1 a.a. ~ 449 a.a) full length recombinant protein with GST tag. MW of the GST tag alone is 26 KDa.
<b>Reactivity:</b>	Human
<b>Purification:</b>	Protein A purified
<b>Presentation:</b>	PBS, pH 7.4. Sourced in Ascites.
<b>Recommended Storage:</b>	Store at -20°C. Aliquot to avoid freeze/thaw cycles.
<b>Usage Summary:</b>	Western Blot (Cell lysate) - positive control HeLa. Western Blot (Cell lysate) - positive control different Cell lines and Human Tissue. Western Blot (Transfected lysate) - positive control transfected 293T cell line. Immunofluorescence (10 ug/ml) - positive control HeLa cells. RNAi Knockdown (Antibody validated).
<b>Uses:</b>	IHC - Paraffin (5 µg/ml), Immunofluorescence (10 µg/ml), Western blot, ELISA, RNA interference (Optimal dilution to be determined by the researcher)
<b>Size:</b>	50 µg
<b>Concentration:</b>	0.5 mg/ml

**Immunohistochemistry Image:**



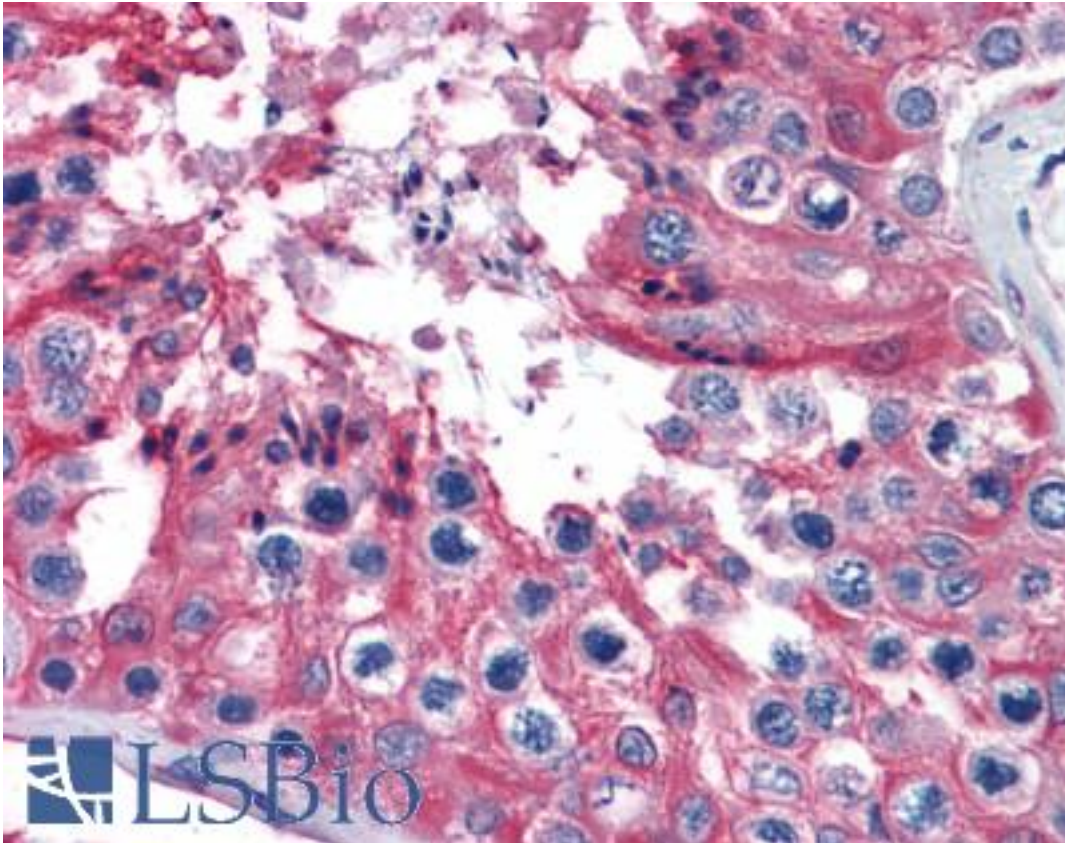
Anti-TUBA4A antibody IHC of human spleen. Immunohistochemistry of formalin-fixed, paraffin-embedded tissue after heat-induced antigen retrieval. Antibody LS-B4552 concentration 5 ug/ml.

**Immunohistochemistry Image:**



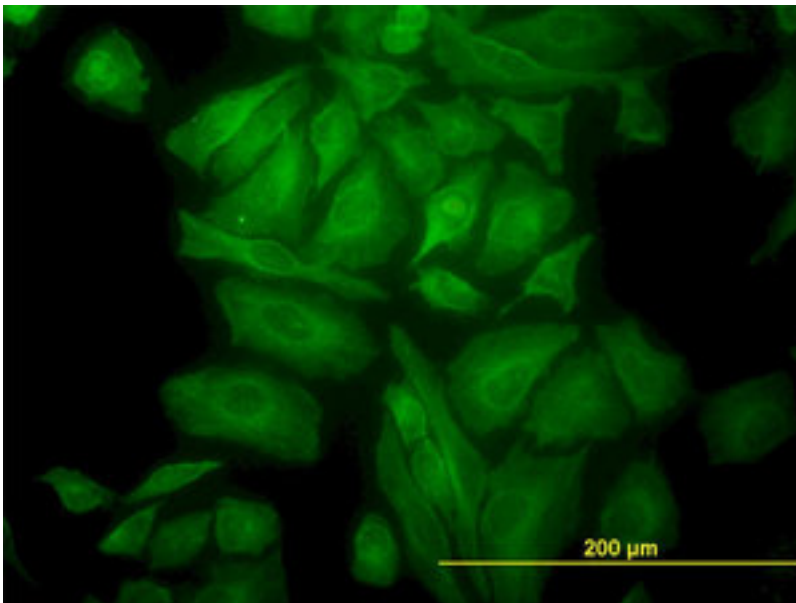
Anti-TUBA4A antibody IHC of human prostate. Immunohistochemistry of formalin-fixed, paraffin-embedded tissue after heat-induced antigen retrieval. Antibody LS-B4552 concentration 5 ug/ml.

**Immunohistochemistry Image:**



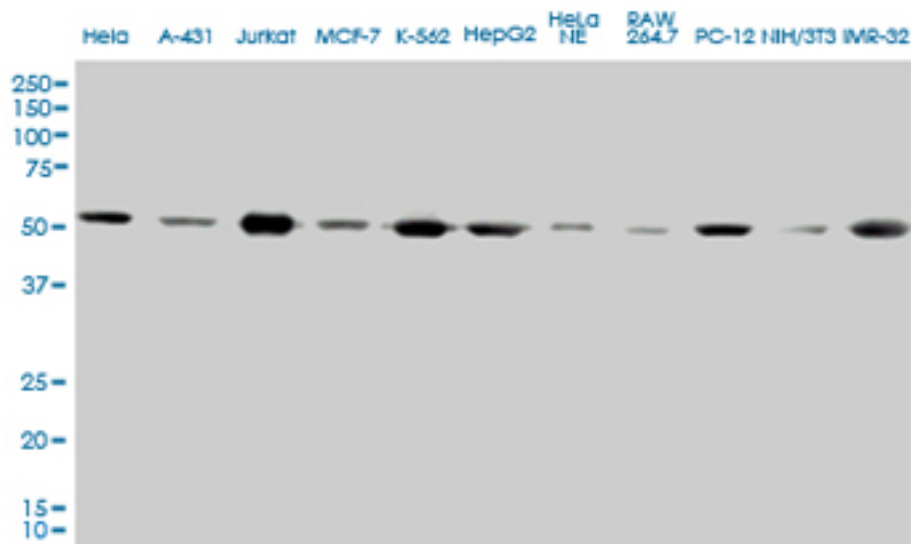
Anti-TUBA4A antibody IHC of human testis. Immunohistochemistry of formalin-fixed, paraffin-embedded tissue after heat-induced antigen retrieval. Antibody LS-B4552 concentration 5 ug/ml.

**Immunofluorescence Image:**



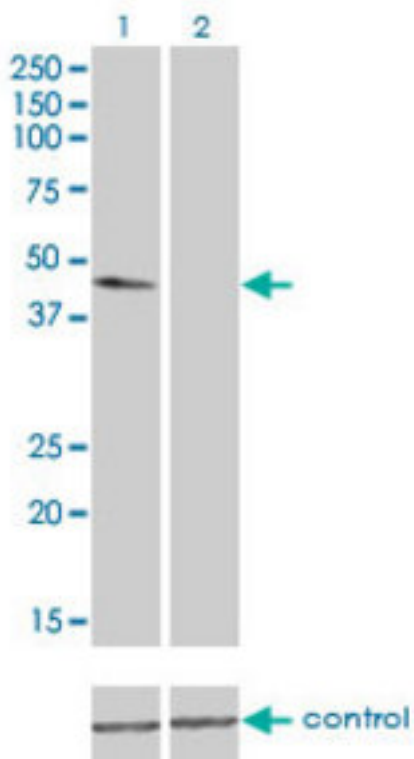
Immunofluorescence of monoclonal antibody to TUBA1 on HeLa cell (antibody concentration 10 ug/ml).

**Western Blot Image:**



TUBA1 monoclonal antibody, clone 2E11. Western blot of TUBA1 expression in different Cell lines and Human Tissue.

**RNA interference Image:**



Western blot of TUBA1 over-expressed 293 cell line, cotransfected with TUBA1 Validated Chimera RNAi (Lane 2) or non-transfected control (Lane 1). Blot probed with TUBA1 monoclonal antibody, clone 2E11. GAPDH ( 36.1 kD ) used as specificity.

Requested From:

Japan

Laboratory Reagent For In Vitro Research Use Only

Not for resale without prior written consent from LifeSpan BioSciences, Inc.

Created on 9/23/2014

© 2014 LifeSpan BioSciences