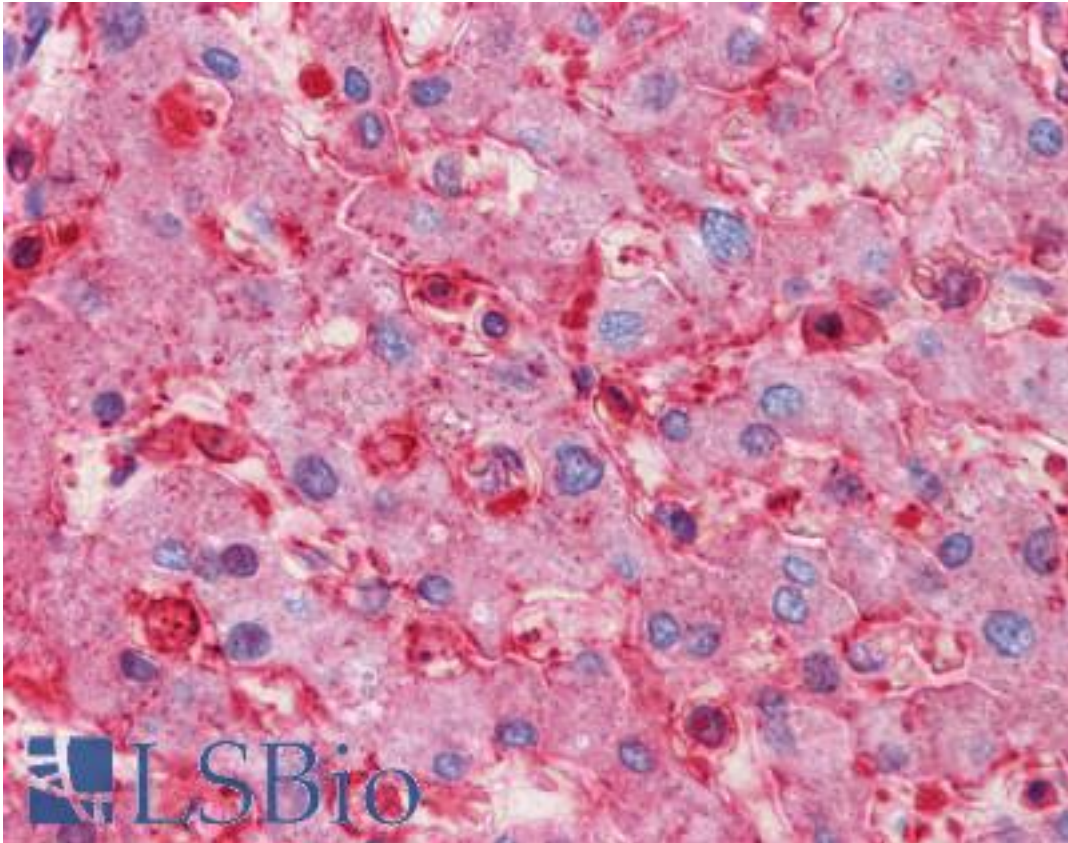


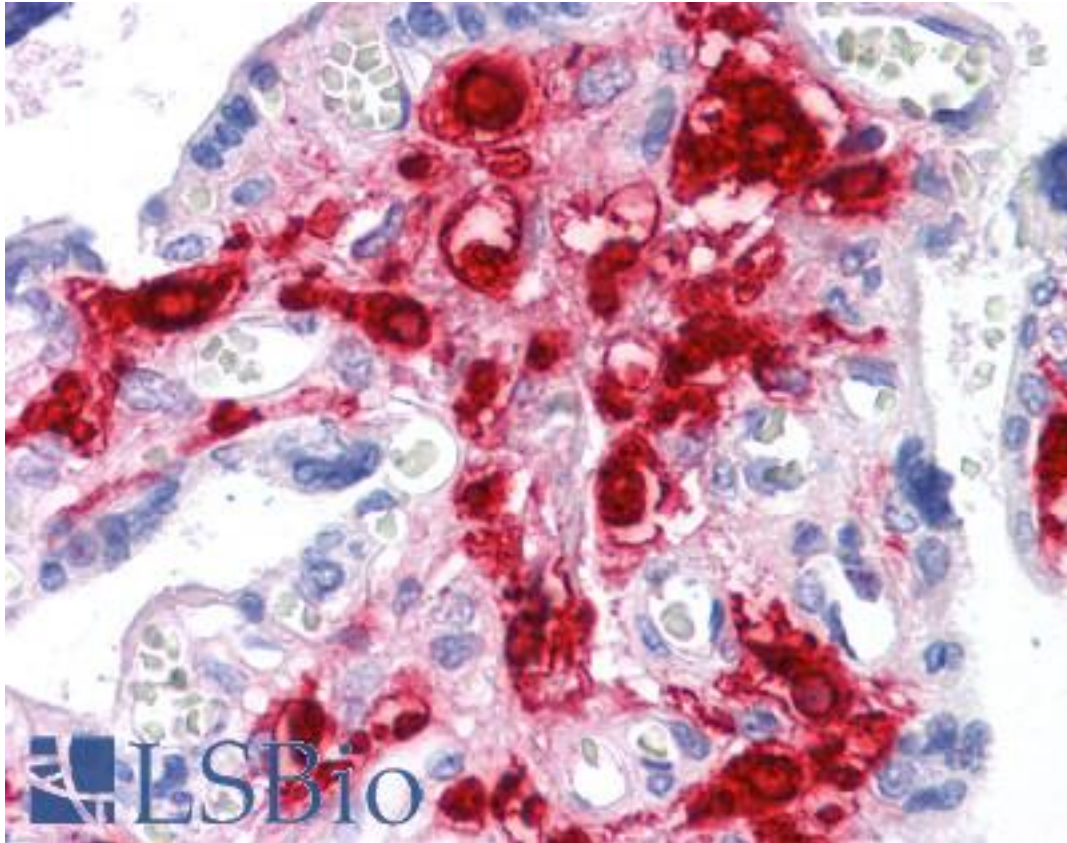
RNF144B Mouse anti-Human Monoclonal (4F1) Antibody - LS-B4550 - LSBio	
CatalogID:	LS-B4550
Validation:	This antibody replaces catalog number LS-C105212. It has been validated for use in the following assays: IHC-P.
Target:	ring finger protein 144B (RNF144B)
Synonyms:	RNF144B Antibody, BA528A10.3 Antibody, IBRDC2 Antibody, p53RFP Antibody, IBR domain containing 2 Antibody, PIR2 Antibody, Ring finger protein 144B Antibody
Host	RNF144B antibody was produced in Mouse
Clonality:	Monoclonal
Isotype:	IgG2a,k
Clone Name:	4F1
Immunogen Species:	RNF144B antibody was raised against Human
Antigen Type:	Recombinant protein
Immunogen:	RNF144B antibody was raised against iBRDC2 (NP_877434, 1 a.a. ~ 101 a.a) partial recombinant protein with GST tag. MW of the GST tag alone is 26 KDa.
Reactivity:	Human
Purification:	Protein A purified
Presentation:	PBS, pH 7.2. Sourced in Ascites.
Recommended Storage:	Store at -20°C. Aliquot to avoid freeze/thaw cycles.
Usage Summary:	Western Blot (Cell lysate) - positive control IMR-32. Immunofluorescence (10 ug/ml) - positive control HeLa cells.
Uses:	IHC - Paraffin (5 µg/ml), Immunofluorescence (10 µg/ml), Western blot (1:500 - 1:1000), ELISA (Optimal dilution to be determined by the researcher)
Size:	50 µg
Concentration:	0.5 mg/ml

Immunohistochemistry Image:



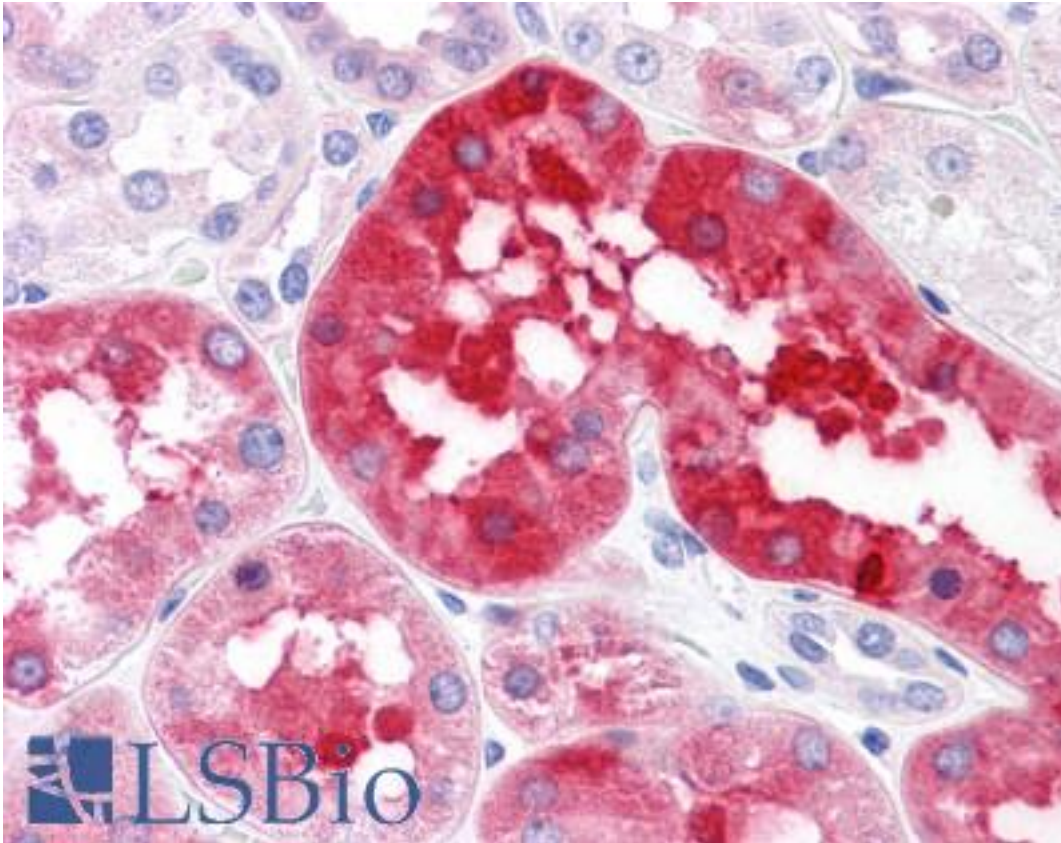
Anti-RNF144B antibody IHC of human liver. Immunohistochemistry of formalin-fixed, paraffin-embedded tissue after heat-induced antigen retrieval. Antibody LS-B4550 concentration 5 ug/ml.

Immunohistochemistry Image:



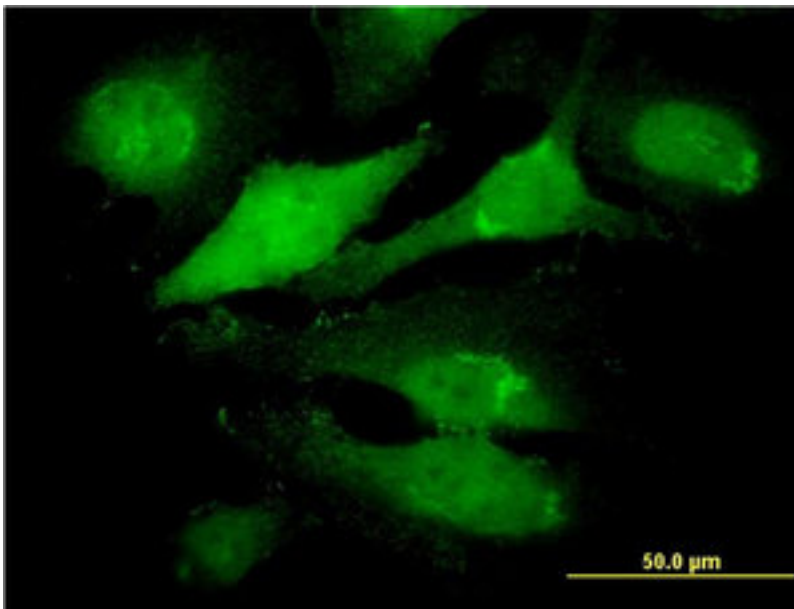
Anti-RNF144B antibody IHC of human placenta. Immunohistochemistry of formalin-fixed, paraffin-embedded tissue after heat-induced antigen retrieval. Antibody LS-B4550 concentration 5 ug/ml.

Immunohistochemistry Image:



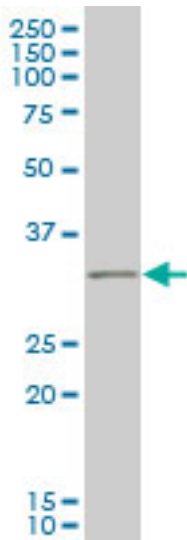
Anti-RNF144B antibody IHC of human kidney. Immunohistochemistry of formalin-fixed, paraffin-embedded tissue after heat-induced antigen retrieval. Antibody LS-B4550 concentration 5 ug/ml.

Immunofluorescence Image:



Immunofluorescence of monoclonal antibody to IBRDC2 on HeLa cell (antibody concentration 10 ug/ml).

Western Blot Image:



RNF144B monoclonal antibody, clone 4F1 Western blot of IBRDC2 expression in IMR-32.

Requested From:

Japan

Laboratory Reagent For In Vitro Research Use Only

Not for resale without prior written consent from LifeSpan BioSciences, Inc.

Created on 9/23/2014

© 2014 LifeSpan BioSciences