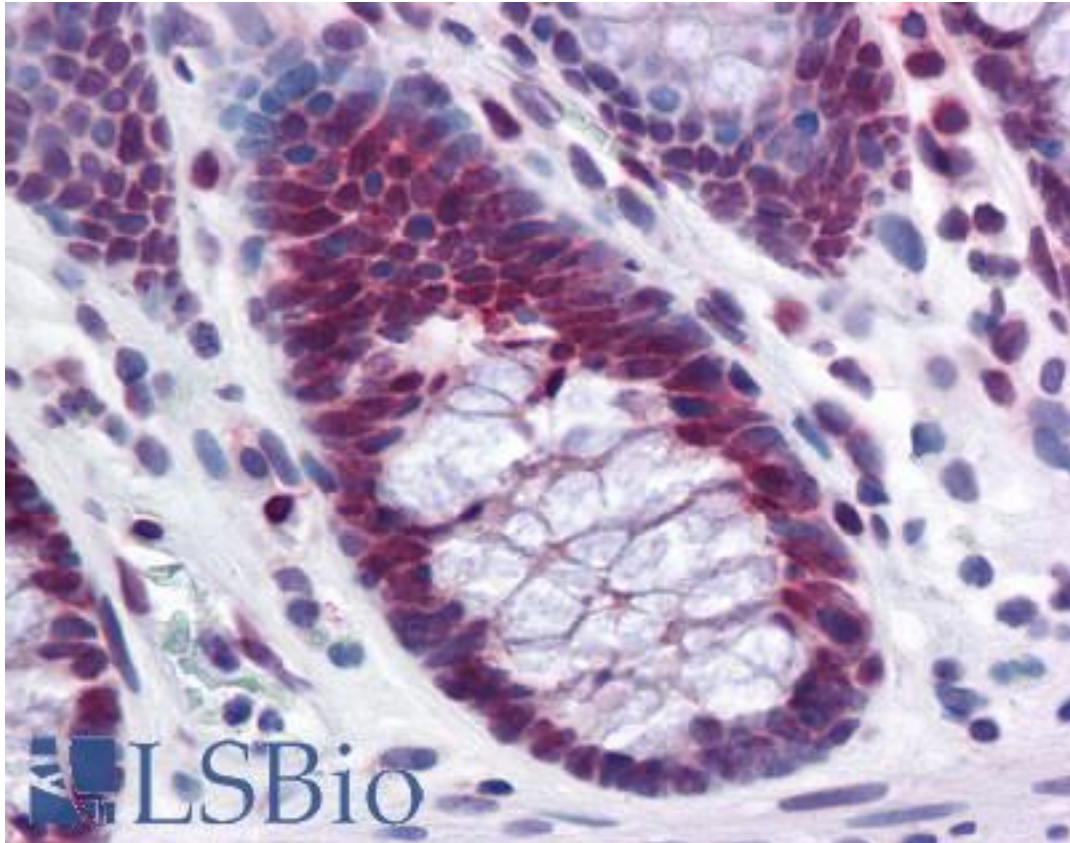


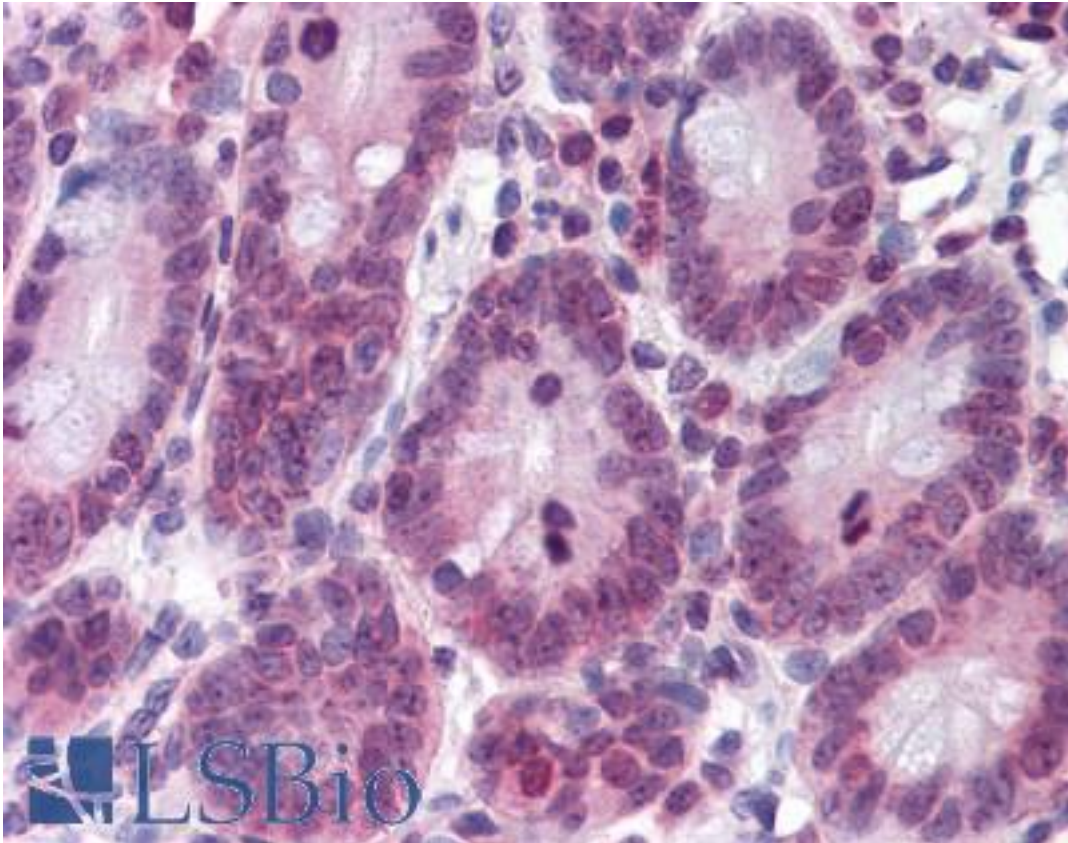
RPL39L Mouse anti-Human Monoclonal (4A8-1B6) Antibody - LS-B4546 - LSBio	
CatalogID:	LS-B4546
Validation:	This antibody replaces catalog number LS-C105201. It has been validated for use in the following assays: IHC-P.
Target:	ribosomal protein L39-like (RPL39L)
Synonyms:	RPL39L Antibody, 60S ribosomal protein L39-like Antibody, 60S ribosomal protein L39-2 Antibody, L39-2 Antibody, Ribosomal protein L39-like 1 Antibody, Ribosomal protein L39-like Antibody, RPL39L1 Antibody
Host	RPL39L antibody was produced in Mouse
Clonality:	Monoclonal
Isotype:	IgG1,k
Clone Name:	4A8-1B6
Immunogen Species:	RPL39L antibody was raised against Human
Antigen Type:	Recombinant protein
Immunogen:	RPL39L antibody was raised against rPL39L (AAH12328, 1 a.a. ~ 52 a.a) full length recombinant protein with GST tag. MW of the GST tag alone is 26 KDa.
Reactivity:	Human
Purification:	Protein A purified
Presentation:	PBS, pH 7.2. Sourced in Ascites.
Recommended Storage:	Store at -20°C. Aliquot to avoid freeze/thaw cycles.
Usage Summary:	Western Blot (Cell lysate) - positive control HL-60. Sandwich ELISA (Recombinant protein).
Uses:	IHC - Paraffin (5 µg/ml), Western blot, ELISA (Optimal dilution to be determined by the researcher)
Size:	50 µg
Concentration:	0.5 mg/ml

Immunohistochemistry Image:



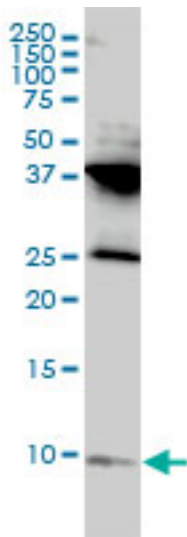
Anti-RPL39L antibody IHC of human colon. Immunohistochemistry of formalin-fixed, paraffin-embedded tissue after heat-induced antigen retrieval. Antibody LS-B4546 concentration 5 ug/ml.

Immunohistochemistry Image:



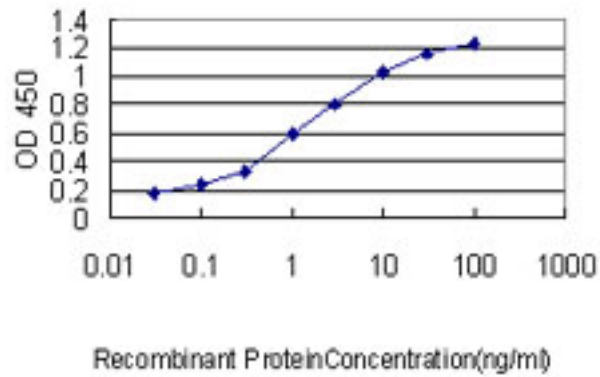
Anti-RPL39L antibody IHC of human small intestine. Immunohistochemistry of formalin-fixed, paraffin-embedded tissue after heat-induced antigen retrieval. Antibody LS-B4546 concentration 5 ug/ml.

Western Blot Image:



RPL39L monoclonal antibody, clone 4A8-1B6 Western blot of RPL39L expression in HL-60.

ELISA Image:



Detection limit for recombinant GST tagged RPL39L is approximately 0.1 ng/ml as a capture antibody.

Requested From:

Japan

Laboratory Reagent For In Vitro Research Use Only

Not for resale without prior written consent from LifeSpan BioSciences, Inc.

Created on 9/23/2014

© 2014 LifeSpan BioSciences