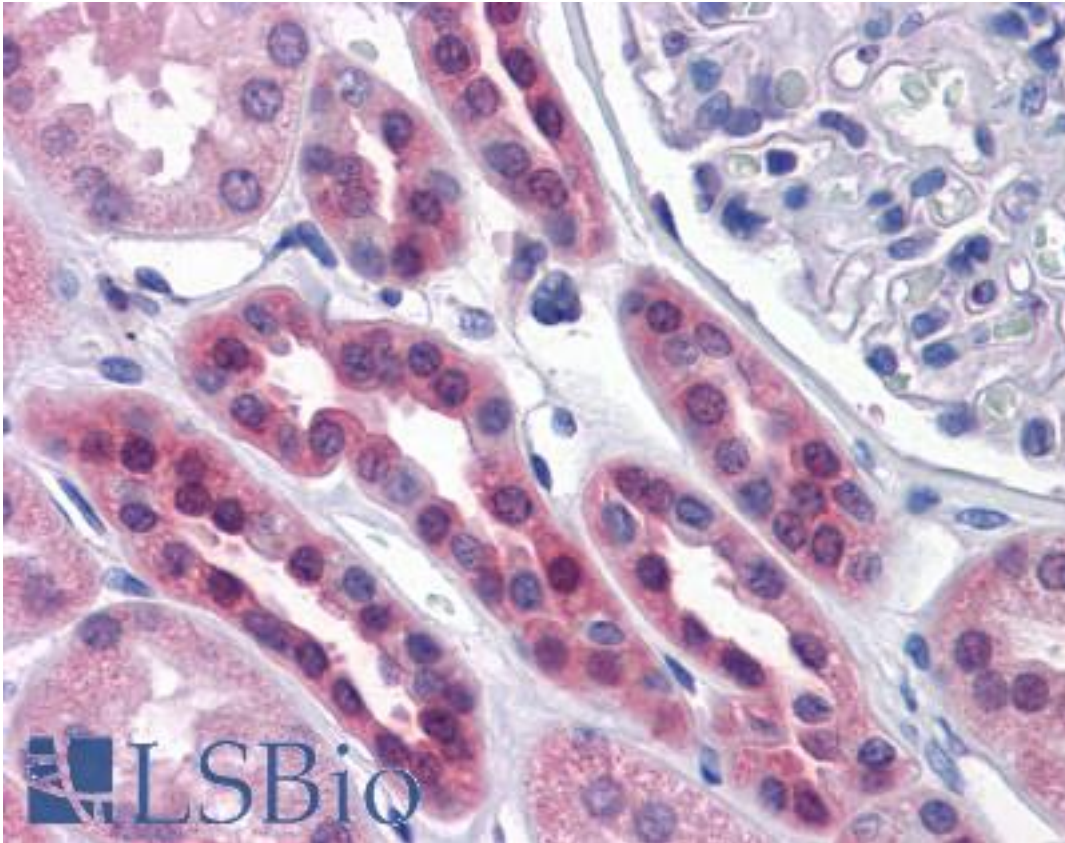


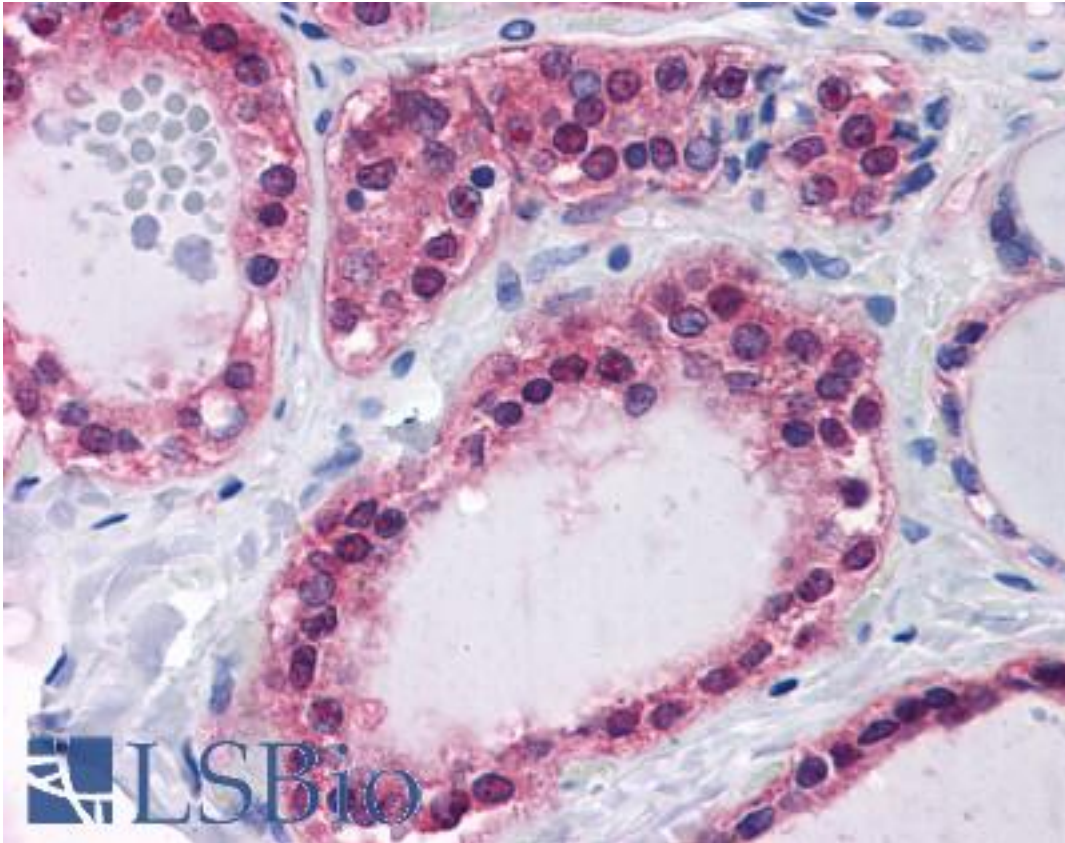
SDSL Mouse anti-Human Monoclonal (M2) Antibody - LS-B4545 - LSBio	
<b>CatalogID:</b>	LS-B4545
<b>Validation:</b>	This antibody replaces catalog number LS-C105199. It has been validated for use in the following assays: IHC-P.
<b>Target:</b>	serine dehydratase-like (SDSL)
<b>Synonyms:</b>	SDSL Antibody, Serine dehydratase 2 Antibody, Serine dehydratase-like Antibody, SDH Antibody, TDH Antibody, L-serine deaminase Antibody, L-threonine dehydratase Antibody, SDH 2 Antibody, SDS-RS1 Antibody
<b>Host</b>	SDSL antibody was produced in Mouse
<b>Clonality:</b>	Monoclonal
<b>Isotype:</b>	IgG,k
<b>Clone Name:</b>	M2
<b>Immunogen Species:</b>	SDSL antibody was raised against Human
<b>Antigen Type:</b>	Recombinant protein
<b>Immunogen:</b>	SDSL antibody was raised against sDSL (AAH09849, 1 a.a. ~ 330 a.a) full length recombinant protein with GST tag. MW of the GST tag alone is 26 KDa.
<b>Reactivity:</b>	Human
<b>Purification:</b>	Protein A purified
<b>Presentation:</b>	PBS, pH 7.2
<b>Recommended Storage:</b>	Store at -20°C. Aliquot to avoid freeze/thaw cycles.
<b>Usage Summary:</b>	Western Blot (Cell lysate) - positive control HepG2. Sandwich ELISA (Recombinant protein).
<b>Uses:</b>	IHC - Paraffin (5 µg/ml), Western blot, ELISA (Optimal dilution to be determined by the researcher)
<b>Size:</b>	50 µg

**Immunohistochemistry Image:**



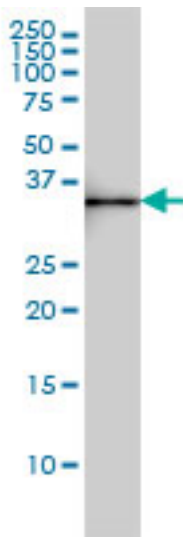
Anti-SDSL antibody IHC of human kidney. Immunohistochemistry of formalin-fixed, paraffin-embedded tissue after heat-induced antigen retrieval. Antibody LS-B4545 concentration 5 ug/ml.

**Immunohistochemistry Image:**



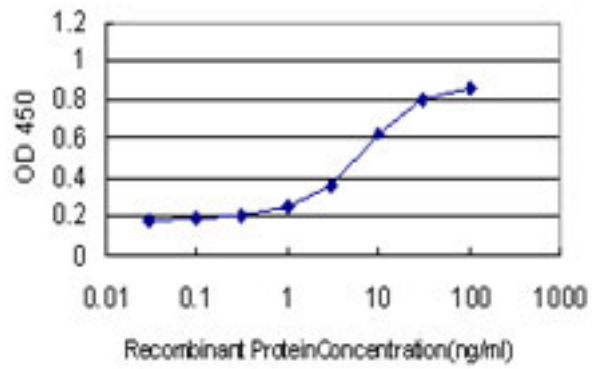
Anti-SDSL antibody IHC of human thyroid. Immunohistochemistry of formalin-fixed, paraffin-embedded tissue after heat-induced antigen retrieval. Antibody LS-B4545 concentration 5 ug/ml.

**Western Blot Image:**



SDSL monoclonal antibody, clone M2 Western blot of SDSL expression in HepG2.

**ELISA Image:**



Detection limit for recombinant GST tagged SDSL is approximately 0.1 ng/ml as a capture antibody.

**Requested From:**

Japan

Laboratory Reagent For In Vitro Research Use Only

Not for resale without prior written consent from LifeSpan BioSciences, Inc.

Created on 9/23/2014

© 2014 LifeSpan BioSciences