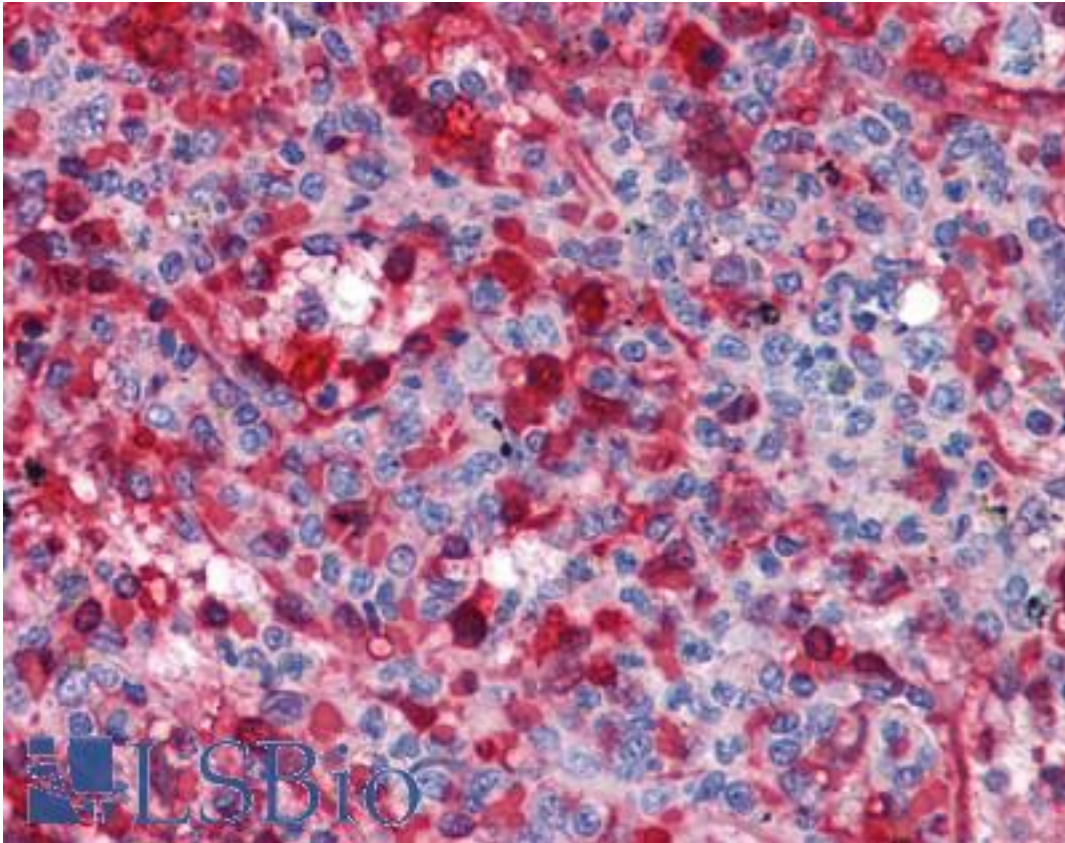


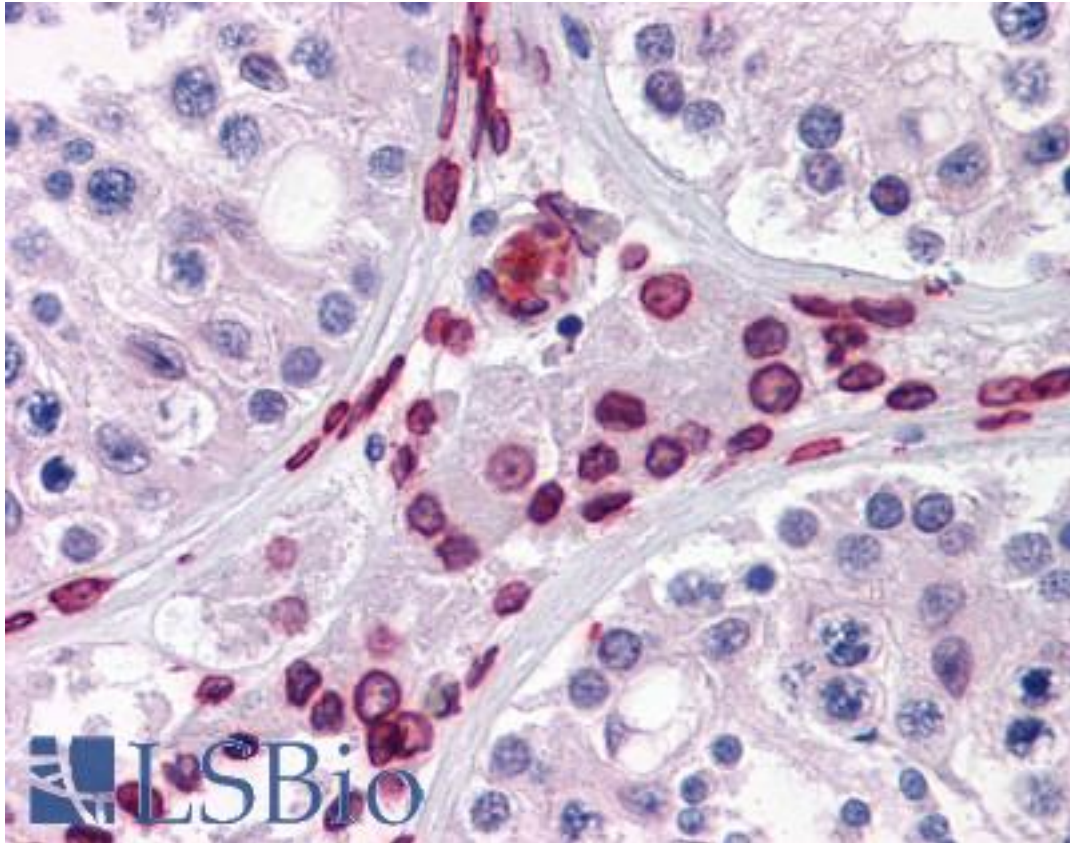
| WDR20 Mouse anti-Human Monoclonal (2A6) Antibody - LS-B4542 - LSBio | |
|---|---|
| CatalogID: | LS-B4542 |
| Validation: | This antibody replaces catalog number LS-C105194. It has been validated for use in the following assays: IHC-P. |
| Target: | WD repeat domain 20 (WDR20) |
| Synonyms: | WDR20 Antibody, DMR Antibody, WD repeat domain 20 Antibody, Protein DMR Antibody |
| Host | WDR20 antibody was produced in Mouse |
| Clonality: | Monoclonal |
| Isotype: | IgG1,k |
| Clone Name: | 2A6 |
| Immunogen Species: | WDR20 antibody was raised against Human |
| Antigen Type: | Recombinant protein |
| Immunogen: | WDR20 antibody was raised against wDR20 (AAH28387, 1 a.a. ~ 570 a.a) full length recombinant protein with GST tag. MW of the GST tag alone is 26 KDa. |
| Reactivity: | Human |
| Purification: | Protein A purified |
| Presentation: | PBS, pH 7.4. Sourced in Ascites. |
| Recommended Storage: | Store at -20°C. Aliquot to avoid freeze/thaw cycles. |
| Usage Summary: | Western Blot (Cell lysate) - positive control Hela NE. Immunofluorescence (10 ug/ml) - positive control HeLa cells. |
| Uses: | IHC - Paraffin (5 µg/ml), Immunofluorescence (10 µg/ml), Western blot, ELISA (Optimal dilution to be determined by the researcher) |
| Size: | 50 µg |
| Concentration: | 0.2 mg/ml |

Immunohistochemistry Image:



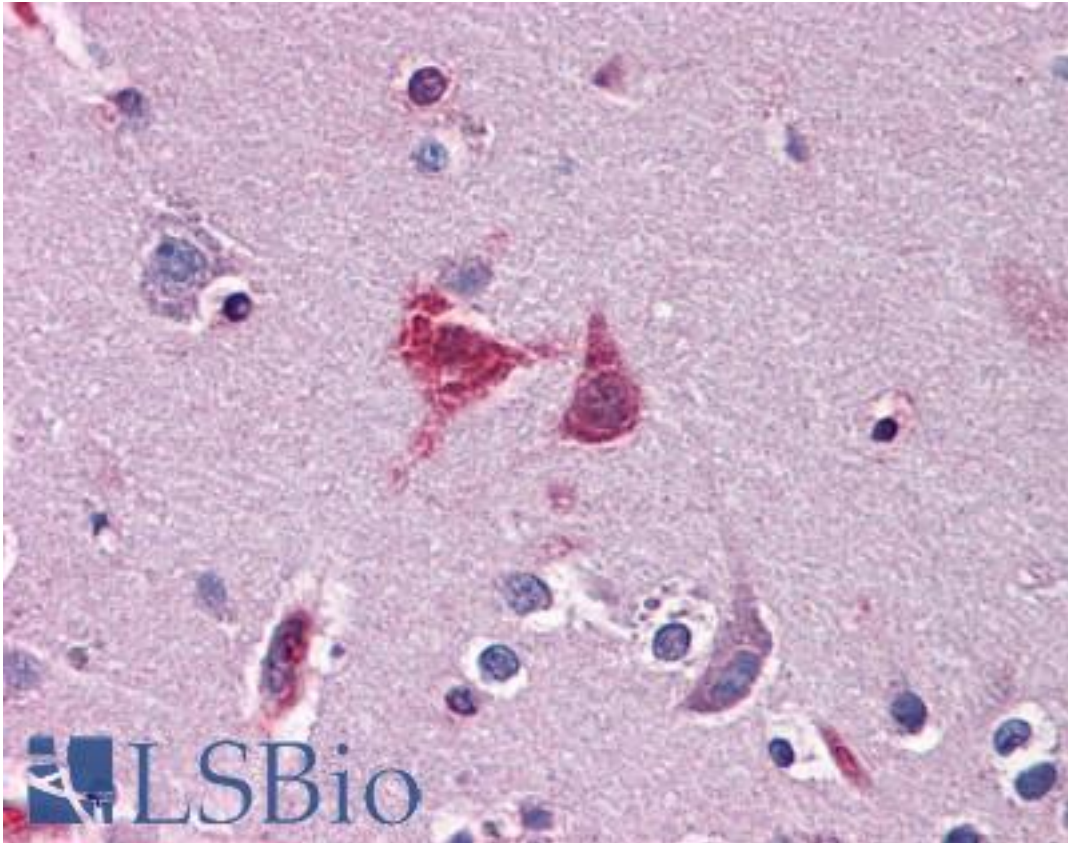
Anti-WDR20 antibody IHC of human spleen. Immunohistochemistry of formalin-fixed, paraffin-embedded tissue after heat-induced antigen retrieval. Antibody LS-B4542 concentration 5 ug/ml.

Immunohistochemistry Image:



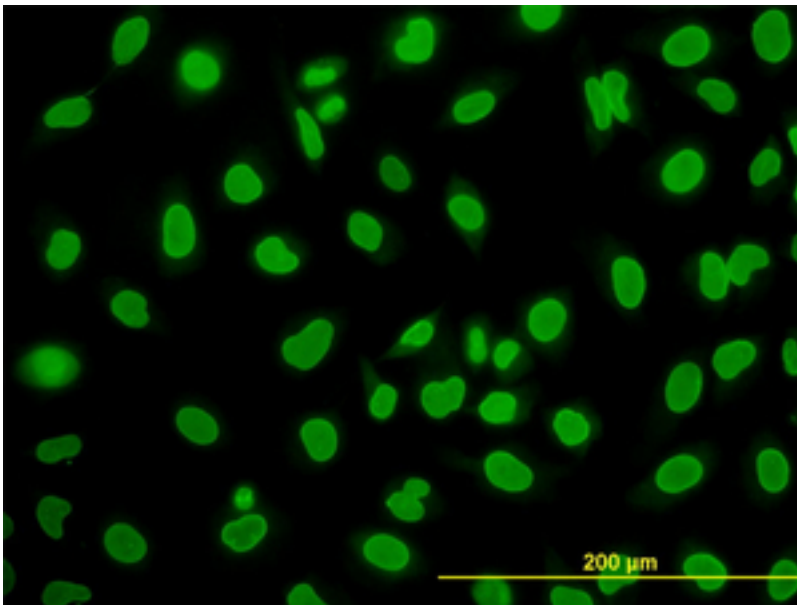
Anti-WDR20 antibody IHC of human testis. Immunohistochemistry of formalin-fixed, paraffin-embedded tissue after heat-induced antigen retrieval. Antibody LS-B4542 concentration 5 ug/ml.

Immunohistochemistry Image:



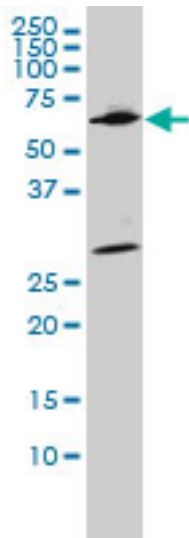
Anti-WDR20 antibody IHC of human brain, cortex. Immunohistochemistry of formalin-fixed, paraffin-embedded tissue after heat-induced antigen retrieval. Antibody LS-B4542 concentration 5 ug/ml.

Immunofluorescence Image:



Immunofluorescence of monoclonal antibody to WDR20 on HeLa cell (antibody concentration 10 ug/ml).

Western Blot Image:



WDR20 monoclonal antibody, clone 2A6 Western blot of WDR20 expression in HeLa NE.

Requested From:

Japan

Laboratory Reagent For In Vitro Research Use Only

Not for resale without prior written consent from LifeSpan BioSciences, Inc.

Created on 9/23/2014

© 2014 LifeSpan BioSciences