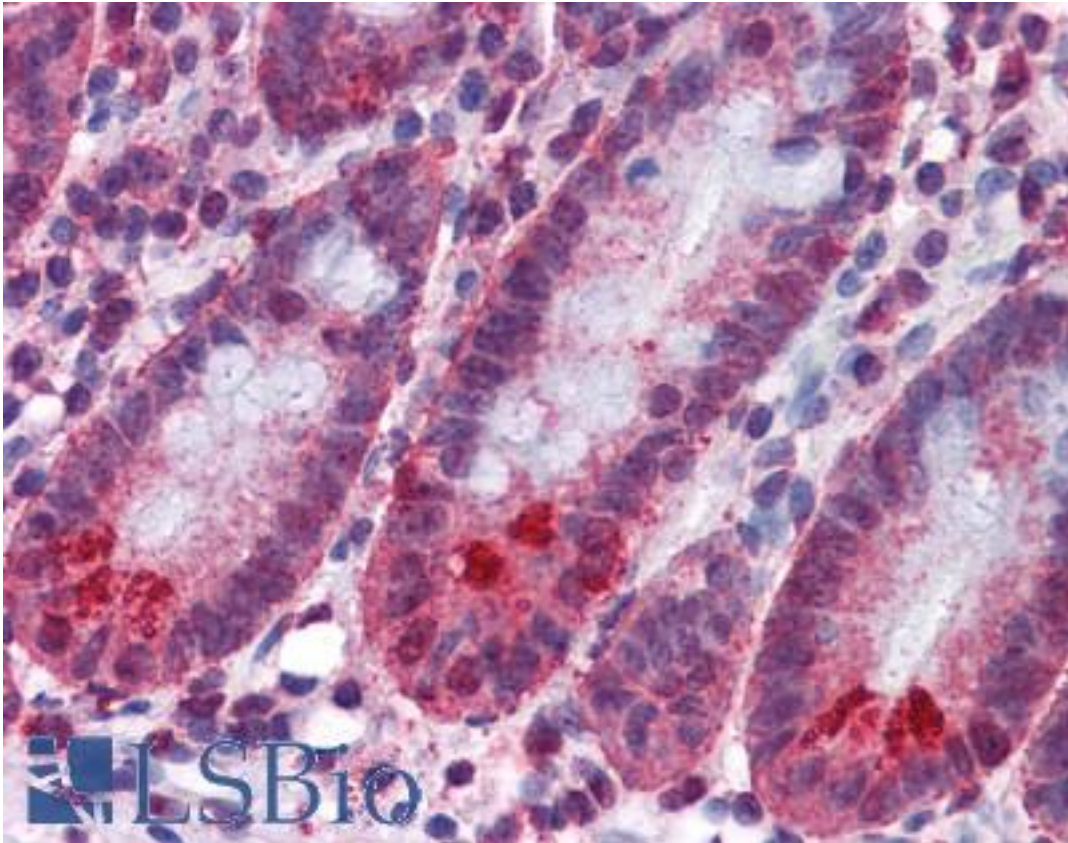


SPSB2 Mouse anti-Human Monoclonal (1E6) Antibody - LS-B4541 - LSBio

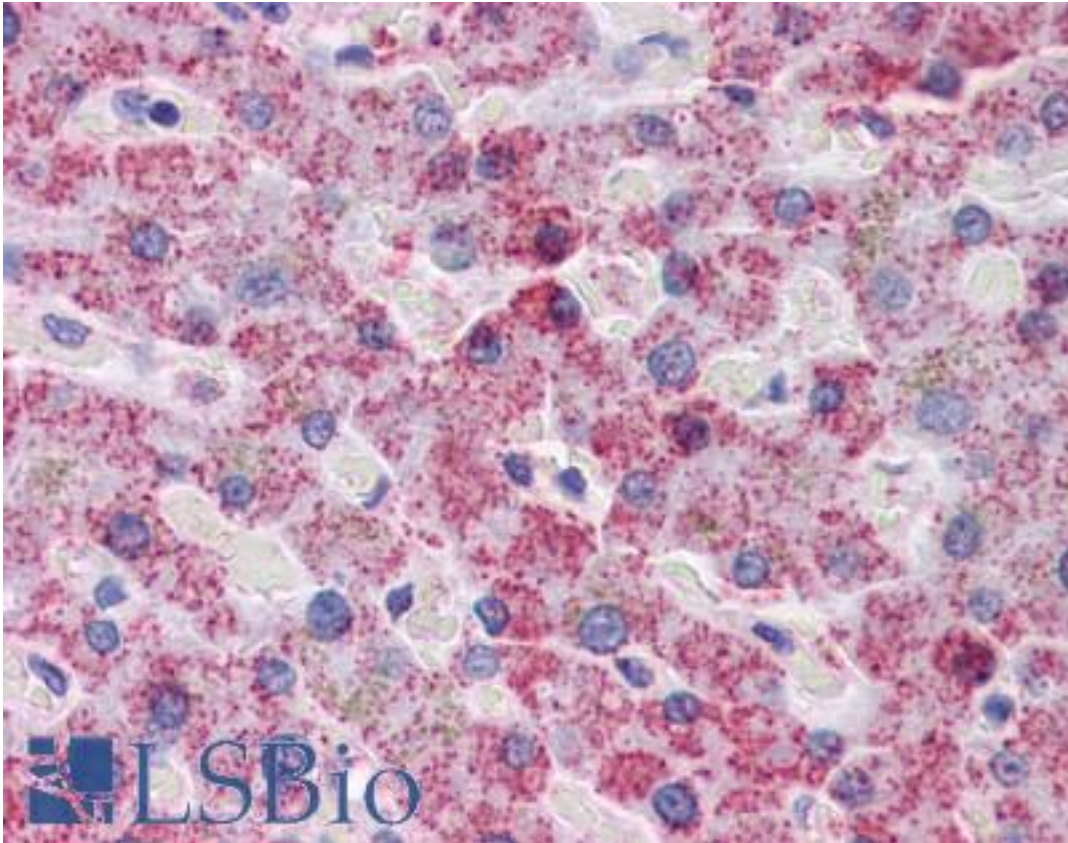
| | |
|-----------------------------|--|
| CatalogID: | LS-B4541 |
| Validation: | This antibody replaces catalog number LS-C105192. It has been validated for use in the following assays: IHC-P. |
| Target: | splA/ryanodine receptor domain and SOCS box containing 2 (SPSB2) |
| Synonyms: | SPSB2 Antibody, GRCC9 Antibody, Gene-rich cluster protein C9 Antibody, SSB-2 Antibody, SSB2 Antibody |
| Host | SPSB2 antibody was produced in Mouse |
| Clonality: | Monoclonal |
| Isotype: | IgG1,k |
| Clone Name: | 1E6 |
| Immunogen Species: | SPSB2 antibody was raised against Human |
| Antigen Type: | Recombinant protein |
| Immunogen: | SPSB2 antibody was raised against gRCC9 (AAH02983, 1 a.a. ~ 91 a.a) partial recombinant protein with GST tag. MW of the GST tag alone is 26 KDa. |
| Reactivity: | Human |
| Purification: | Protein A purified |
| Presentation: | PBS, pH 7.2. Sourced in Ascites. |
| Recommended Storage: | Store at -20°C. Aliquot to avoid freeze/thaw cycles. |
| Usage Summary: | Western Blot (Cell lysate) - positive control A-549. Sandwich ELISA (Recombinant protein). |
| Uses: | IHC - Paraffin (5 µg/ml), Western blot, ELISA (Optimal dilution to be determined by the researcher) |
| Size: | 50 µg |
| Concentration: | 0.5 mg/ml |

Immunohistochemistry Image:



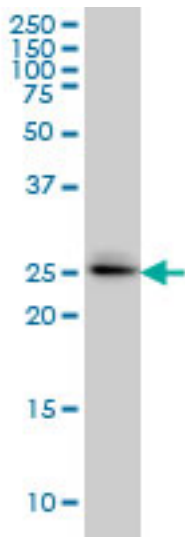
Anti-SPSB2 antibody IHC of human small intestine. Immunohistochemistry of formalin-fixed, paraffin-embedded tissue after heat-induced antigen retrieval. Antibody LS-B4541 concentration 5 ug/ml.

Immunohistochemistry Image:



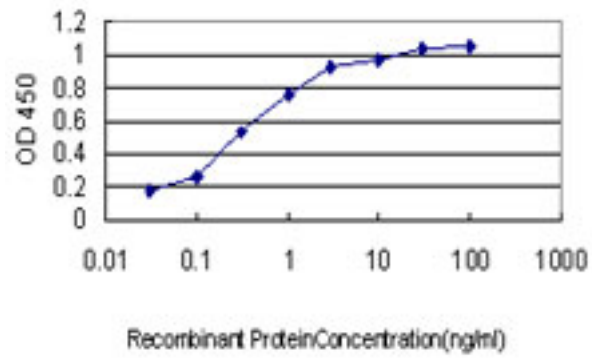
Anti-SPSB2 antibody IHC of human liver. Immunohistochemistry of formalin-fixed, paraffin-embedded tissue after heat-induced antigen retrieval. Antibody LS-B4541 concentration 5 ug/ml.

Western Blot Image:



GRCC9 monoclonal antibody, clone 1E6 Western blot of SPSB2 expression in A-549.

ELISA Image:



Detection limit for recombinant GST tagged SPSB2 is approximately 0.03 ng/ml as a capture antibody.

Requested From:

Japan

Laboratory Reagent For In Vitro Research Use Only

Not for resale without prior written consent from LifeSpan BioSciences, Inc.

Created on 9/23/2014

© 2014 LifeSpan BioSciences